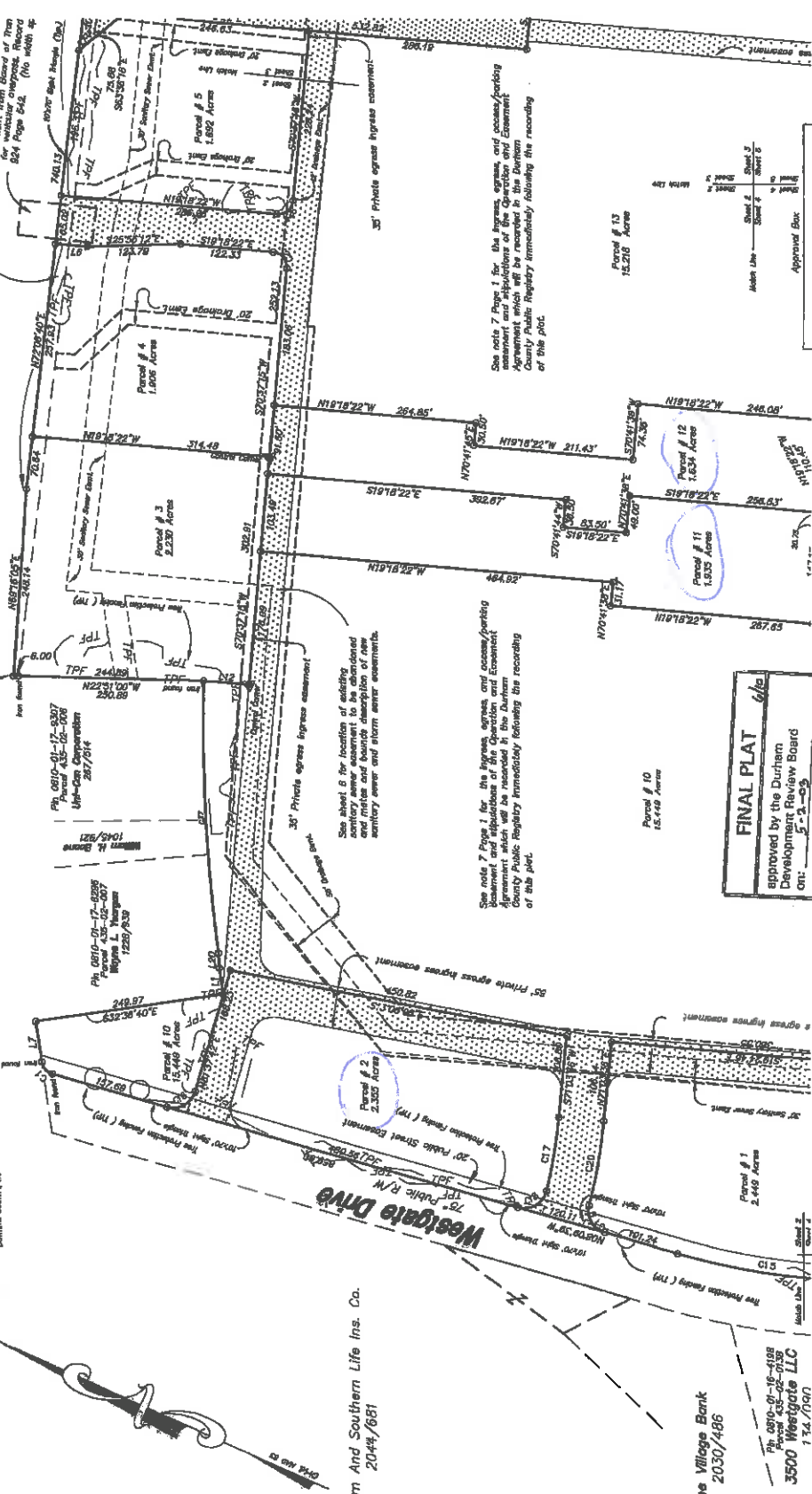


U.S. Hwy 15-501
R/W Varies

FILED
Plat Book 151 Page 14
Date 10/23/23 Time 8:27 AM
WILSON COUNTY RECORDS
DURHAM COUNTY, NC



N.C. Civil Coordinates
N 807510.3481
E 2011800.7102

Ph. 0810-01-17-0307
Parcel 435-05-006
Upland-Cast
287/514

Ph. 0810-01-17-0305
Parcel 435-05-007
Wayne L. Yeager
1230/830

Ph. 0810-01-16-0188
Parcel 435-02-0188
3500 Westgate LLC
174/000

The Western And Southern Life Ins. Co.
2044/681

The Village Bank
2030/486

35° Private egress easement

35° Private egress easement

35° Private egress easement

35° Private egress easement

35° Private egress easement

35° Private egress easement

35° Private egress easement

35° Private egress easement

See sheet 6 for location of existing
sanitary sewer easement to be abandoned
and make and locate description of new
sanitary sewer and storm sewer easements.

See note 7 Page 1 for the ingress, egress, and access/parking
easement and stipulations of the Quorion and Easement
Agreement which will be recorded in the Durham
County Public Registry immediately following the recording
of this plat.

See note 7 Page 1 for the ingress, egress, and access/parking
easement and stipulations of the Quorion and Easement
Agreement which will be recorded in the Durham
County Public Registry immediately following the recording
of this plat.

See note 7 Page 1 for the ingress, egress, and access/parking
easement and stipulations of the Quorion and Easement
Agreement which will be recorded in the Durham
County Public Registry immediately following the recording
of this plat.

See note 7 Page 1 for the ingress, egress, and access/parking
easement and stipulations of the Quorion and Easement
Agreement which will be recorded in the Durham
County Public Registry immediately following the recording
of this plat.

See note 7 Page 1 for the ingress, egress, and access/parking
easement and stipulations of the Quorion and Easement
Agreement which will be recorded in the Durham
County Public Registry immediately following the recording
of this plat.

FINAL PLAT
approved by the Durham
Development Review Board
on: 5-2-03
Steve R. Mead
Clerk, Development Review Board
approval void if not recorded within
30 days or by: 8-2-03

Parcel # 10
15.448 Acres

Parcel # 11
1.833 Acres

Parcel # 12
1.634 Acres

Parcel # 13
15.210 Acres

Parcel # 1
2.448 Acres

Parcel # 2
2.330 Acres

Parcel # 3
2.238 Acres

Parcel # 4
1.805 Acres

Parcel # 5
1.892 Acres

Parcel # 10
15.448 Acres

Parcel # 11
1.833 Acres

Parcel # 12
1.634 Acres

Parcel # 13
15.210 Acres

Parcel # 1
2.448 Acres

Parcel # 2
2.330 Acres

Parcel # 3
2.238 Acres

Parcel # 4
1.805 Acres

Parcel # 5
1.892 Acres

Parcel # 10
15.448 Acres

Parcel # 11
1.833 Acres

Parcel # 12
1.634 Acres

Parcel # 13
15.210 Acres

Parcel # 1
2.448 Acres

Parcel # 2
2.330 Acres

Parcel # 3
2.238 Acres

Parcel # 4
1.805 Acres

Parcel # 5
1.892 Acres

Parcel # 10
15.448 Acres

Parcel # 11
1.833 Acres

Parcel # 12
1.634 Acres

Parcel # 13
15.210 Acres

Parcel # 1
2.448 Acres

Parcel # 2
2.330 Acres

Parcel # 3
2.238 Acres

Parcel # 4
1.805 Acres

Parcel # 5
1.892 Acres

Parcel # 10
15.448 Acres

Parcel # 11
1.833 Acres

Parcel # 12
1.634 Acres

Parcel # 13
15.210 Acres

Parcel # 1
2.448 Acres

Parcel # 2
2.330 Acres

Parcel # 3
2.238 Acres

Parcel # 4
1.805 Acres

Parcel # 5
1.892 Acres

Parcel # 10
15.448 Acres

Parcel # 11
1.833 Acres

Parcel # 12
1.634 Acres

Parcel # 13
15.210 Acres

Parcel # 1
2.448 Acres

Parcel # 2
2.330 Acres

Parcel # 3
2.238 Acres

Parcel # 4
1.805 Acres

Parcel # 5
1.892 Acres

Parcel # 10
15.448 Acres

Parcel # 11
1.833 Acres

Parcel # 12
1.634 Acres

Parcel # 13
15.210 Acres

Parcel # 1
2.448 Acres

Parcel # 2
2.330 Acres

Parcel # 3
2.238 Acres

Parcel # 4
1.805 Acres

Parcel # 5
1.892 Acres

Parcel # 10
15.448 Acres

Parcel # 11
1.833 Acres

Parcel # 12
1.634 Acres

Parcel # 13
15.210 Acres

Parcel # 1
2.448 Acres

Parcel # 2
2.330 Acres

Parcel # 3
2.238 Acres

Parcel # 4
1.805 Acres

Parcel # 5
1.892 Acres

Parcel # 10
15.448 Acres

Parcel # 11
1.833 Acres

Parcel # 12
1.634 Acres

Parcel # 13
15.210 Acres

Parcel # 1
2.448 Acres

Parcel # 2
2.330 Acres

Parcel # 3
2.238 Acres

Parcel # 4
1.805 Acres

Parcel # 5
1.892 Acres

Parcel # 10
15.448 Acres

Parcel # 11
1.833 Acres

Parcel # 12
1.634 Acres

Parcel # 13
15.210 Acres

Parcel # 1
2.448 Acres

Parcel # 2
2.330 Acres

Parcel # 3
2.238 Acres

Parcel # 4
1.805 Acres

Parcel # 5
1.892 Acres

Parcel # 10
15.448 Acres

Parcel # 11
1.833 Acres

Parcel # 12
1.634 Acres

Parcel # 13
15.210 Acres

Parcel # 1
2.448 Acres

Parcel # 2
2.330 Acres

Parcel # 3
2.238 Acres

Parcel # 4
1.805 Acres

Parcel # 5
1.892 Acres

Parcel # 10
15.448 Acres

Parcel # 11
1.833 Acres

Parcel # 12
1.634 Acres

Parcel # 13
15.210 Acres

Parcel # 1
2.448 Acres

Parcel # 2
2.330 Acres

Parcel # 3
2.238 Acres

Parcel # 4
1.805 Acres

Parcel # 5
1.892 Acres

Parcel # 10
15.448 Acres

Parcel # 11
1.833 Acres

Parcel # 12
1.634 Acres

Parcel # 13
15.210 Acres

Parcel # 1
2.448 Acres

Parcel # 2
2.330 Acres

Parcel # 3
2.238 Acres

Parcel # 4
1.805 Acres

Parcel # 5
1.892 Acres

Parcel # 10
15.448 Acres

Parcel # 11
1.833 Acres

Parcel # 12
1.634 Acres

Parcel # 13
15.210 Acres

Parcel # 1
2.448 Acres

Parcel # 2
2.330 Acres

Parcel # 3
2.238 Acres

Parcel # 4
1.805 Acres

Parcel # 5
1.892 Acres

Parcel # 10
15.448 Acres

Parcel # 11
1.833 Acres

Parcel # 12
1.634 Acres

Parcel # 13
15.210 Acres

Parcel # 1
2.448 Acres

Parcel # 2
2.330 Acres

Parcel # 3
2.238 Acres

Parcel # 4
1.805 Acres

Parcel # 5
1.892 Acres

Parcel # 10
15.448 Acres

Parcel # 11
1.833 Acres

Parcel # 12
1.634 Acres

Parcel # 13
15.210 Acres

Parcel # 1
2.448 Acres

Parcel # 2
2.330 Acres

Parcel # 3
2.238 Acres

Parcel # 4
1.805 Acres

Parcel # 5
1.892 Acres

Parcel # 10
15.448 Acres

Parcel # 11
1.833 Acres

Parcel # 12
1.634 Acres

Parcel # 13
15.210 Acres

Parcel # 1
2.448 Acres

Parcel # 2
2.330 Acres

Parcel # 3
2.238 Acres

Parcel # 4
1.805 Acres

Parcel # 5
1.892 Acres

Parcel # 10
15.448 Acres

Parcel # 11
1.833 Acres

Parcel # 12
1.634 Acres

Parcel # 13
15.210 Acres

Parcel # 1
2.448 Acres

Parcel # 2
2.330 Acres

Parcel # 3
2.238 Acres

Parcel # 4
1.805 Acres

Parcel # 5
1.892 Acres

Parcel # 10
15.448 Acres

Parcel # 11
1.833 Acres

Parcel # 12
1.634 Acres

Parcel # 13
15.210 Acres

Parcel # 1
2.448 Acres

Parcel # 2
2.330 Acres

Parcel # 3
2.238 Acres

Parcel # 4
1.805 Acres

Parcel # 5
1.892 Acres

Parcel # 10
15.448 Acres

Parcel # 11
1.833 Acres

Parcel # 12
1.634 Acres

Parcel # 13
15.210 Acres

Parcel # 1
2.448 Acres

Parcel # 2
2.330 Acres

Parcel # 3
2.238 Acres

Parcel # 4
1.805 Acres

Parcel # 5
1.892 Acres

Parcel # 10
15.448 Acres

Parcel # 11
1.833 Acres

Parcel # 12
1.634 Acres

Parcel # 13
15.210 Acres

Parcel # 1
2.448 Acres

Parcel # 2
2.330 Acres

Parcel # 3
2.238 Acres

Parcel # 4
1.805 Acres

Parcel # 5
1.892 Acres

Parcel # 10
15.448 Acres

Parcel # 11
1.833 Acres

Parcel # 12
1.634 Acres

Parcel # 13
15.210 Acres

Parcel # 1
2.448 Acres

Parcel # 2
2.330 Acres

Parcel # 3
2.238 Acres

Parcel # 4
1.805 Acres

Parcel # 5
1.892 Acres

Parcel # 10
15.448 Acres

Parcel # 11
1.833 Acres

Parcel # 12
1.634 Acres

Parcel # 13
15.210 Acres

Parcel # 1
2.448 Acres

Parcel # 2
2.330 Acres

