

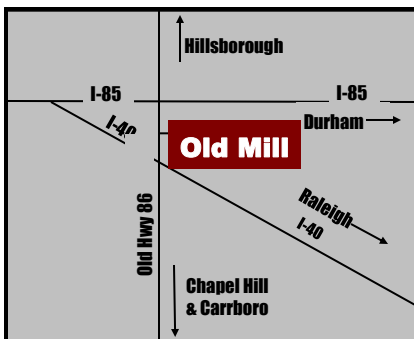
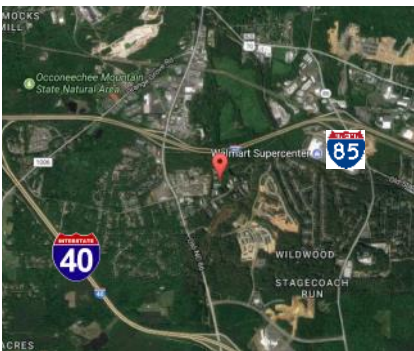


FOR SALE
OLD MILL BUSINESS PARK
505 MILLSTONE DRIVE
HILLSBOROUGH, NC

A WEST & WOODALL COMPANY



PROFESSIONAL OFFICE BUILDNG



- Zoning:** EDD Primary, Economic Development District
- Utilities:** Hillsborough water & sewer, Spectrum on-site
- Location:** Old Mill Business Park is located on Old NC 86 (S. Churton Street) midway between I-40 and I-85. East end of Millstone Drive on left.
- Legal:** PIN # 9873-18-9196 DB 4218/PG 298
- Size:** 3,548 SF plus 1,800 SF of 2nd floor unfinished storage space and future offices.
- Price:** \$575,000

(919) 493-0395

Mark O'Neal, CCIM — mark.oneal@westandwoodall.com
Emilee Collins - emilee@westandwoodall.com

**PICKETT
SPROUSE**

COMMERCIAL
REAL ESTATE



A WEST & WOODALL COMPANY

(919) 493-0395

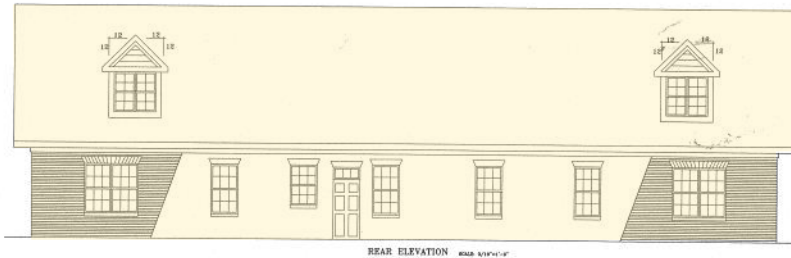
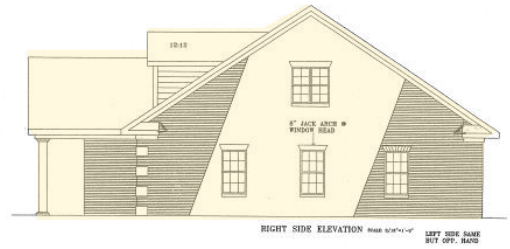
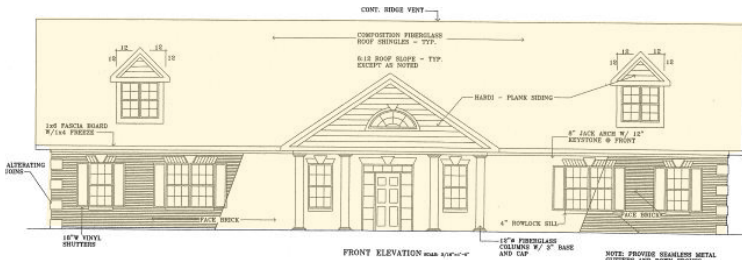
Mark O'Neal – mark.oneal@westandwoodall.com

Emilee Collins- emilee@westandwoodall.com



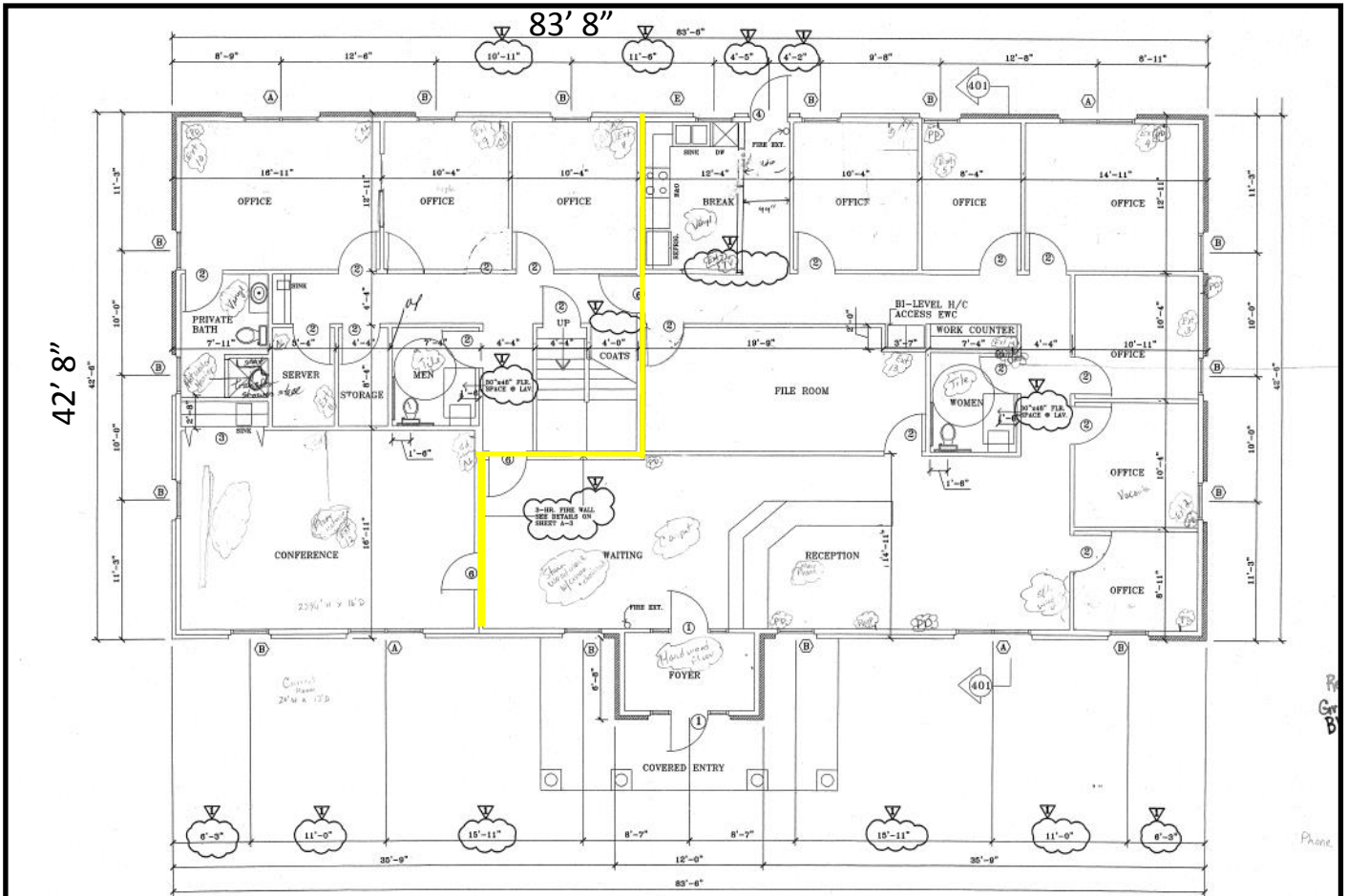


505 Millstone Drive

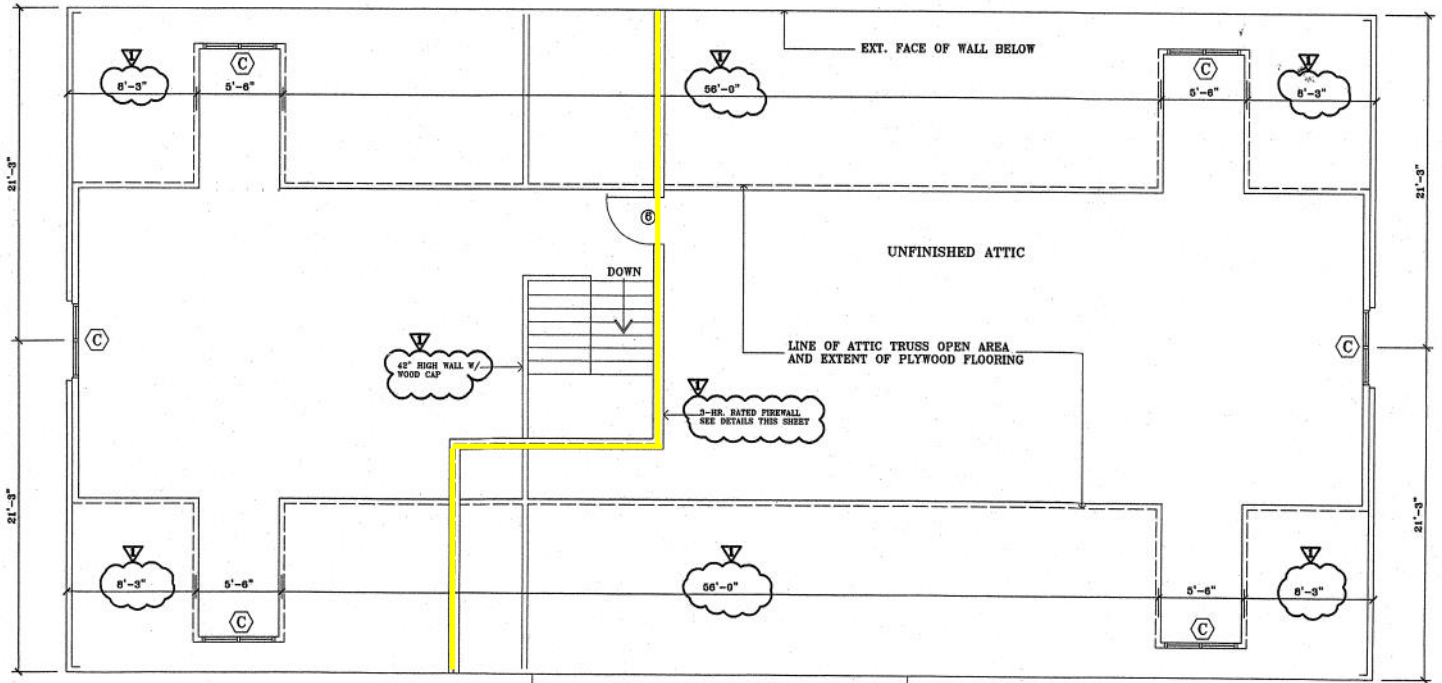


YELLOW = FIREWALL

FLOOR PLAN



UNFINISHED ATTIC SPACE



YELLOW = FIREWALL

