



Link to aerial video - <https://youtu.be/xvM78nqj1vg>

A WEST & WOODALL COMPANY

COMMERCIAL BUILDING LOT FOR SALE



Zoning: EDD Primary, Economic Development District allows uses from office to light manufacturing.

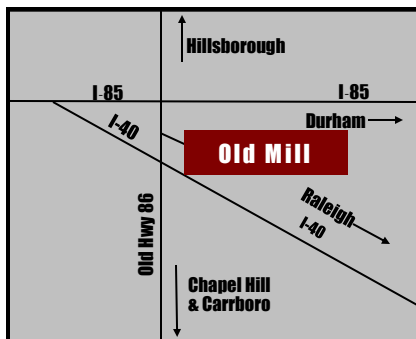
Utilities: Hillsborough water & sewer & Dominion Energy (gas)

Location: Old Mill Business Park is located on Old NC 86 (S. Churton Street) midway between I-40 and I-85. East on Millstone Drive to left on Leah Drive.

Size: 1.27 acres - Priced at **\$125,000**

919-493-0395

Mark O'Neal - CCIM - mark.oneal@westandwoodall.com
Emilee Collins - emilee@westandwoodall.com
Visit us on the web at www.PickettSprouse.com

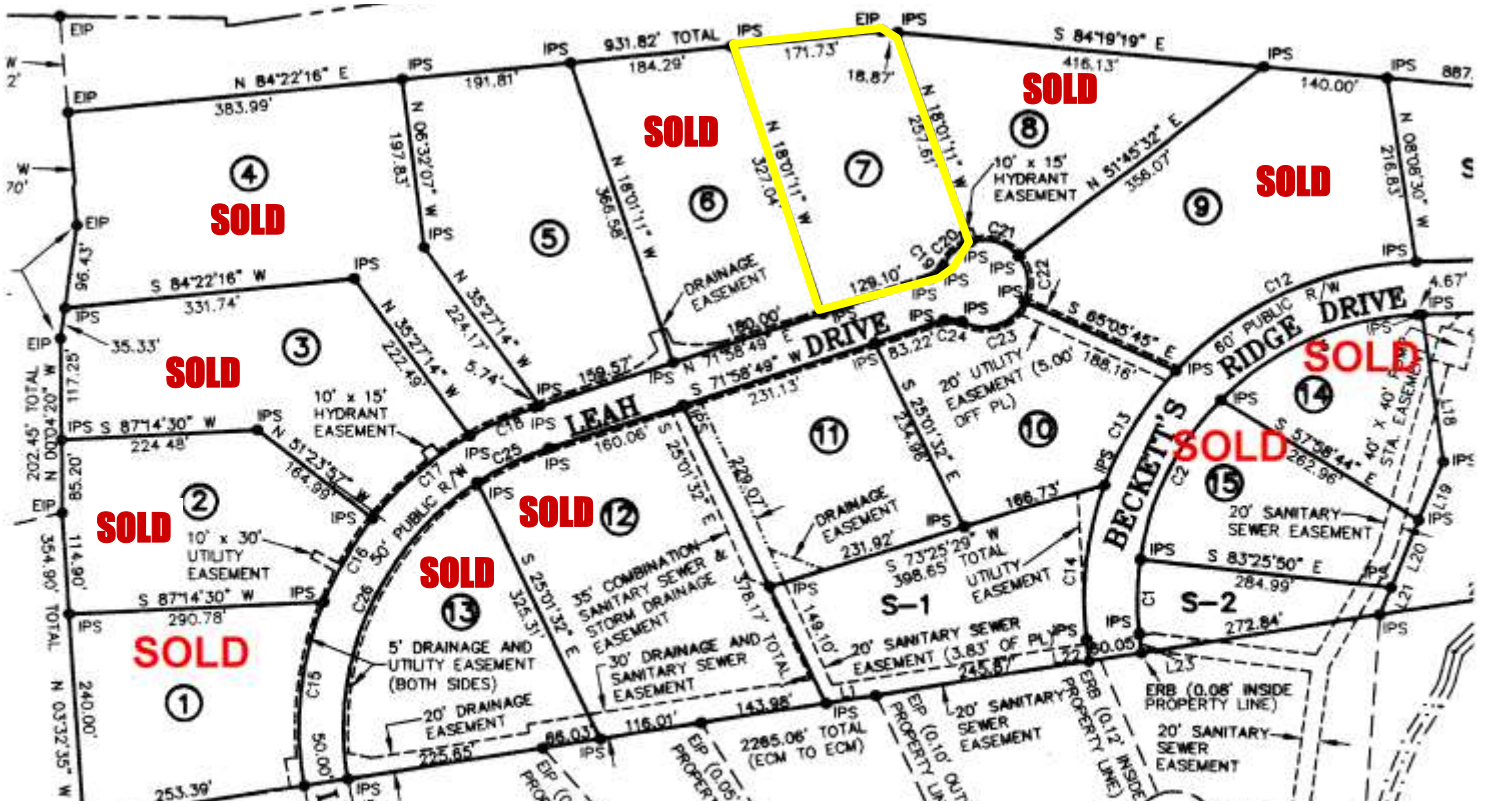




919-493-0395

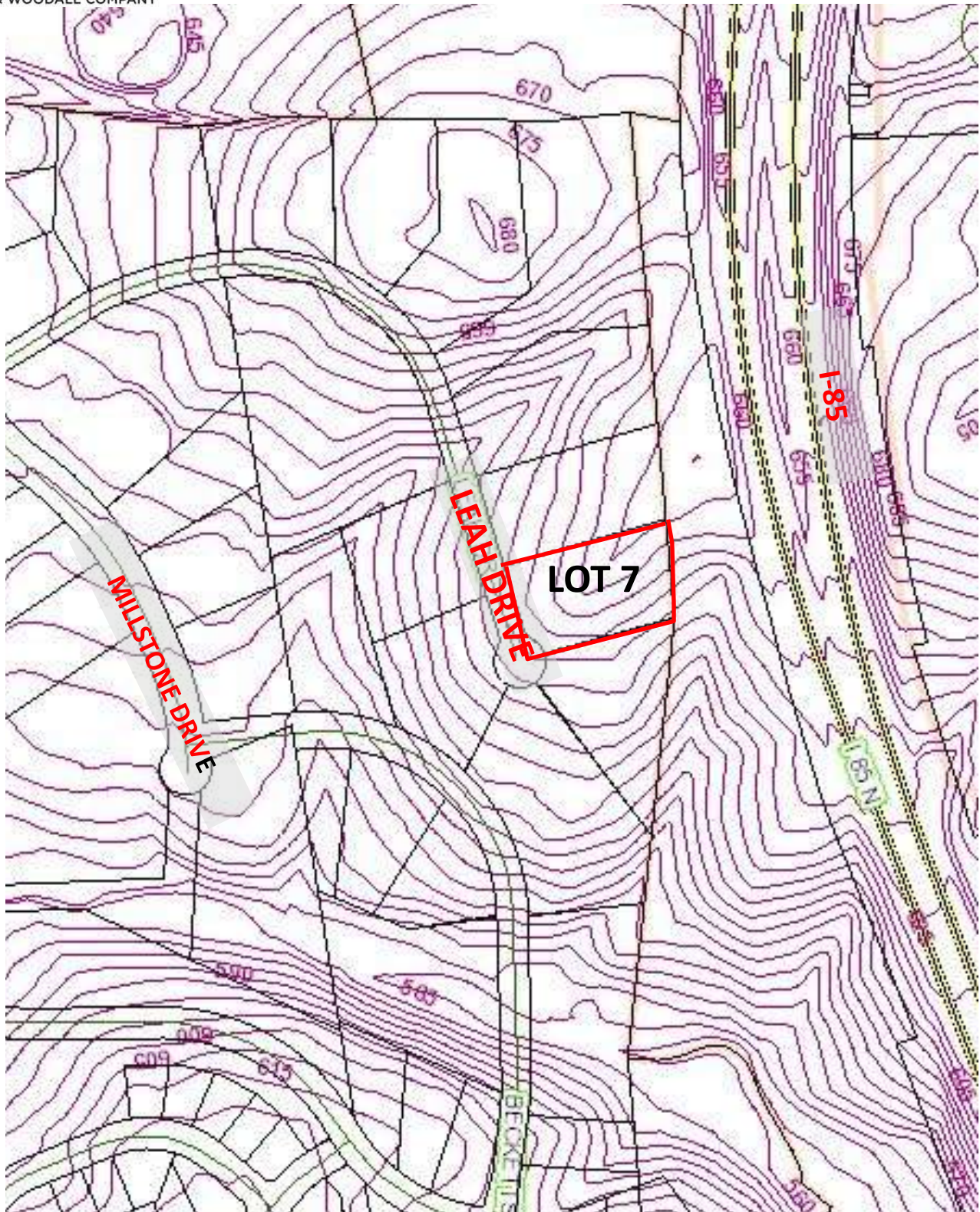
Mark O'Neal - mark.oneal@westandwoodall.com

Emilee Collins-emilee@westandwoodall.com



ADDITIONAL SITES AVAILABLE





Additional Sites Available