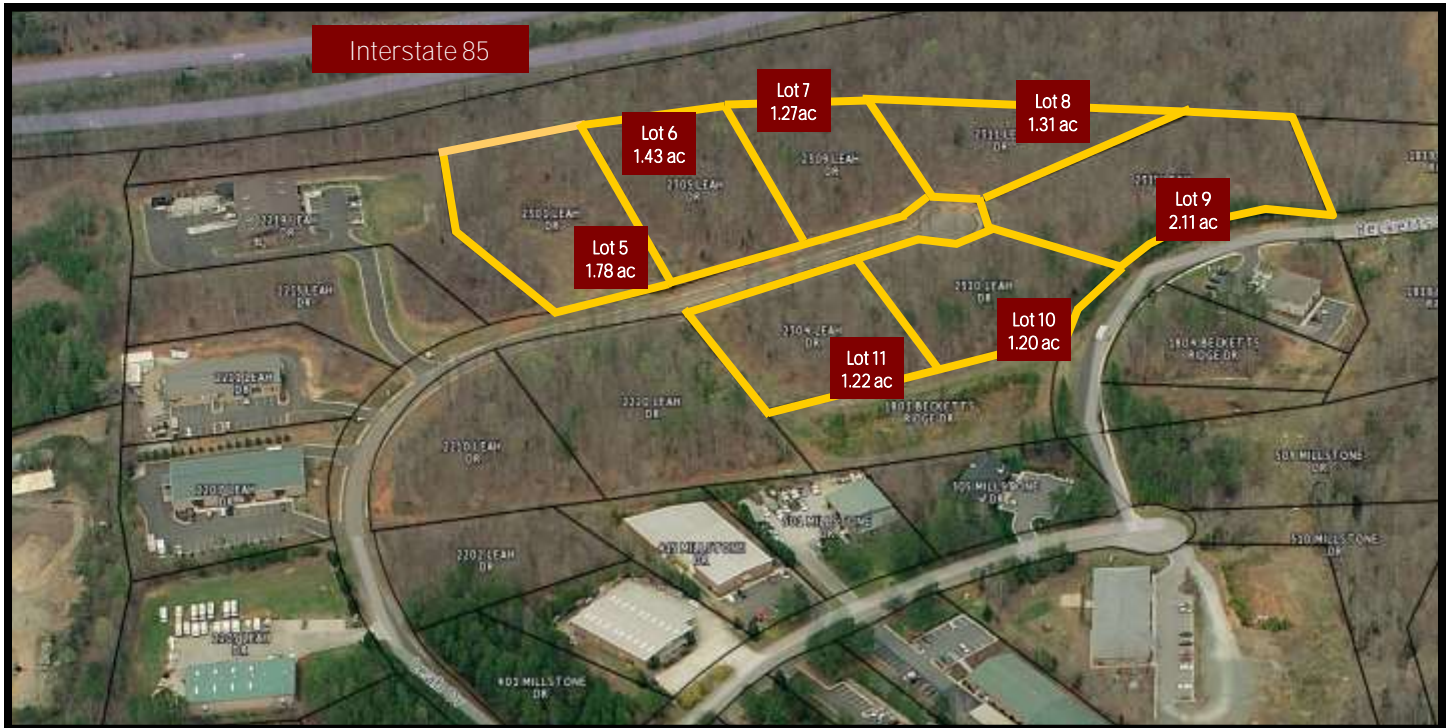




Link to aerial video - <https://youtu.be/xvM78nqj1vg>

A WEST & WOODALL COMPANY

COMMERCIAL BUILDING LOTS FOR SALE



Zoning: EDD Primary, Economic Development District allows uses from office to light manufacturing.

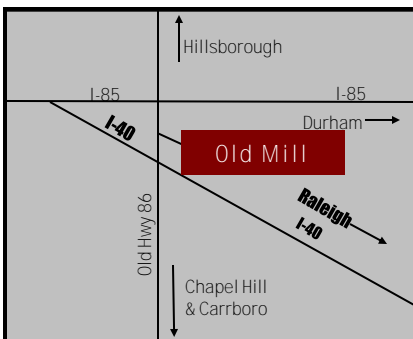
Utilities: Hillsborough water & sewer

Location: Old Mill Business Park is located on Old NC 86 (S. Churton Street) midway between I-40 and I-85. East on Millstone Drive to left on Leah Drive.

Size: Most lots are 1 to 2 acres and can be combined for large users.

Price: \$90,000 to \$120,000

TWO LOT DISCOUNTS AVAILABLE



919-493-0395

MARK O'NEAL— CCIM — marko@pickett-sprouse.com

Visit us on the web at www.pickett-sprouse.com



LOT #	ACREAGE	PRICE
5	1.78	\$90,000
6	1.43	\$120,000
7	1.27	\$120,000
★ Lots 6 & 7 Package Discount		\$210,000
Lots 8 & 9 Package Discount 3.42 AC		\$190,000
10	1.20	\$120,000
11	1.22	\$100,000
★ Lots 10 & 11 Package Discount:		\$190,000

Easily Combined

Easily Combined

