



A WEST & WOODALL COMPANY



Old Mill Business Park

2211 Leah Drive, Units 3 and 4, Hillsborough, NC

- Two 1,200 square foot units for lease, **AVAILABLE MAY 2020**
- Each unit has approximately 450 SF of office, each with bathroom and 750 SF of warehouse.
- Each unit is fully conditioned with a rear drive-in roll-up door.
- The adjoining 2,400 SF Unit 5 is also available for a combined 4,800 SF.
- \$2,400 / month (both units) | \$1,300 / month (individual units)
- Tenant pays utilities and janitorial

UNIT 3



Mark O'Neal, CCIM

mark.oneal@westandwoodall.com

(919)287-3051

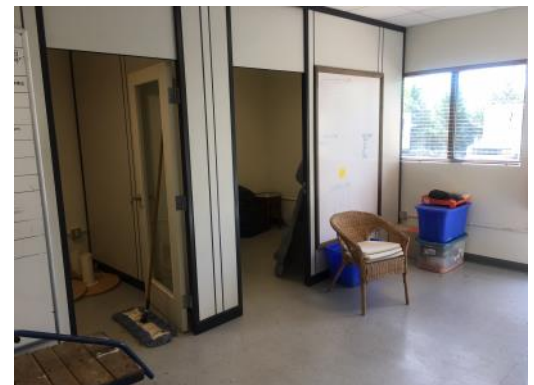
Emilee Collins

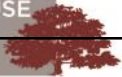
Emilee@westandwoodall.com

(919)730-7040

Visit us on the web at
westandwoodallcre.com

UNIT 4





MARK O'NEAL, CCIM

mark.oneal@westandwoodall.com

(919)287-3051

EMILEE COLLINS

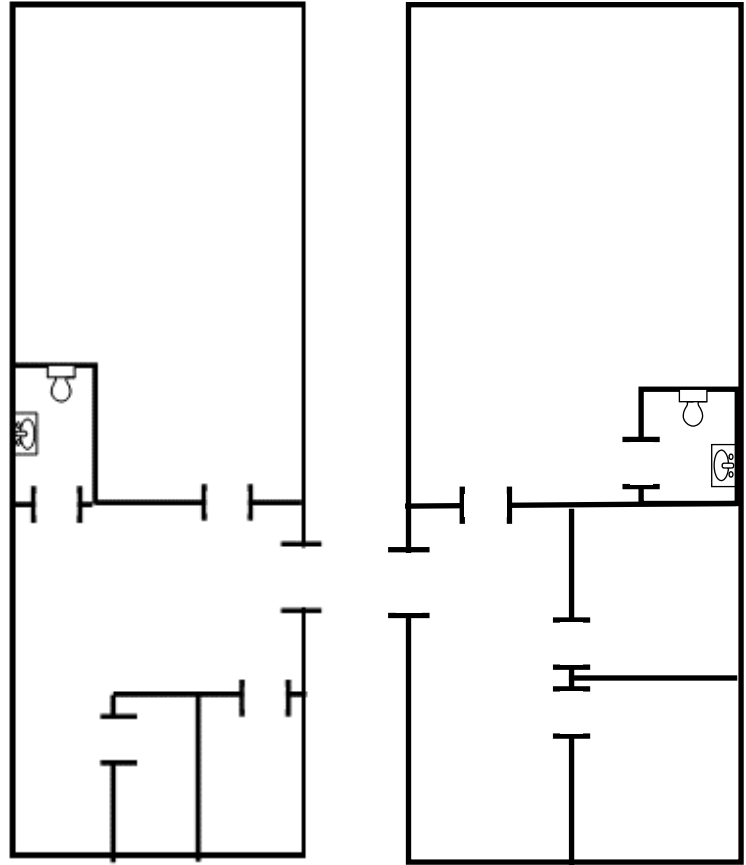
EMILEE@WEATANDWOODALL.COM

(919) 730-7040

Visit us on the web at
westandwoodallcre.com

UNIT 3

UNIT 4



UNIT 3

