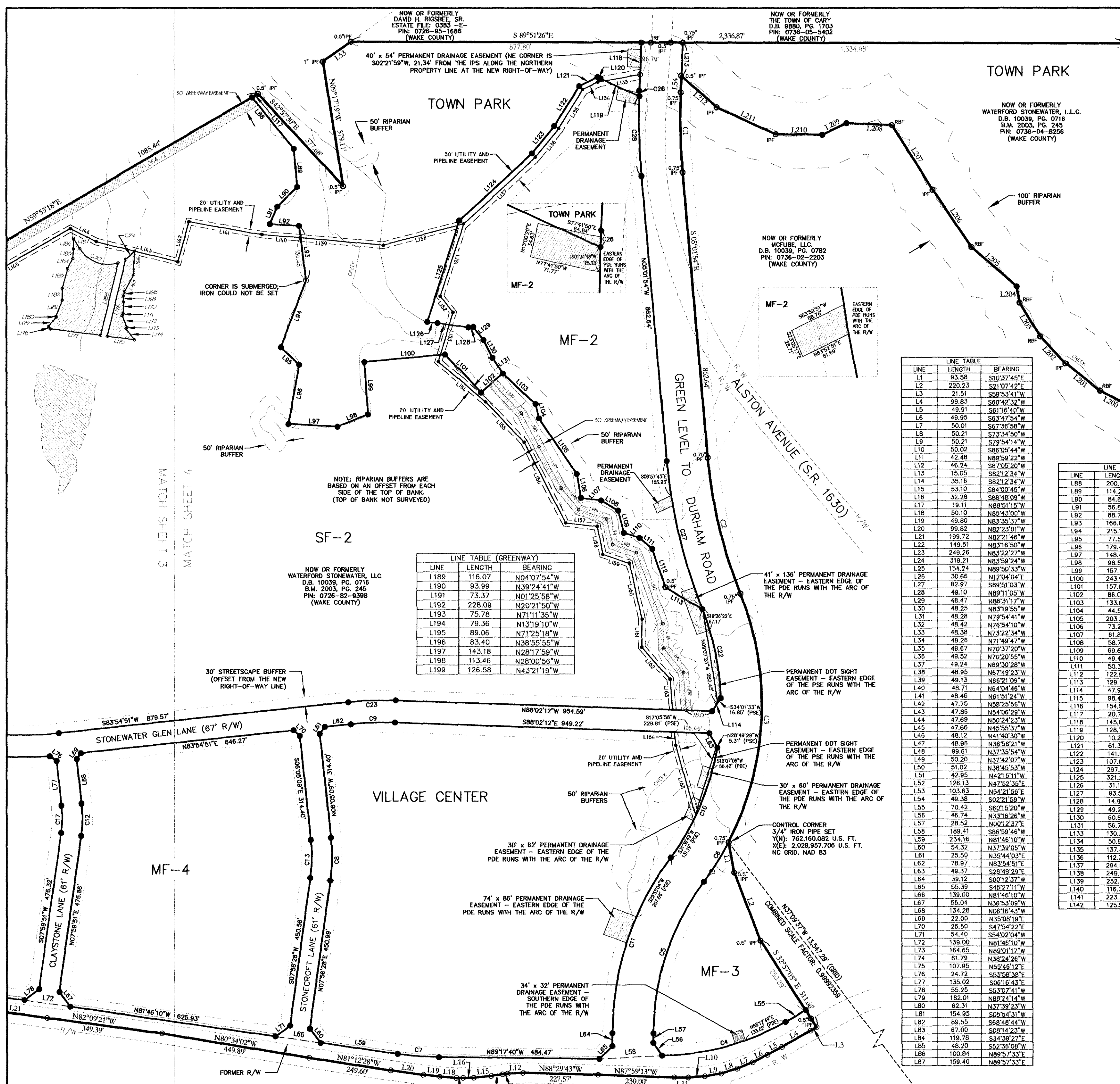
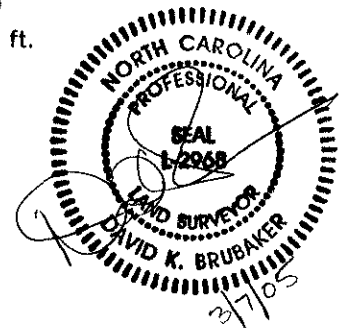
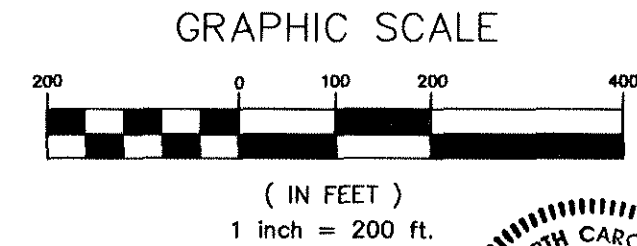


SEE SHEET 1 OF 4 FOR GENERAL NOTES, LEGEND, AND CERTIFICATIONS



FILED FOR REGISTRATION DATE: LAURA M. RIDICK, REGISTER OF DEEDS WAKE COUNTY



LINE TABLE with columns: LINE, LENGTH, BEARING. Lists lines L1 through L133.

LINE TABLE with columns: LINE, LENGTH, BEARING. Lists lines L88 through L213.

LINE TABLE with columns: LINE, LENGTH, BEARING. Lists lines L143 through L213.

LINE TABLE (GREENWAY) with columns: LINE, LENGTH, BEARING. Lists lines L189 through L199.

NOW OR FORMERLY WATERFORD STONEWATER, L.L.C. D.B. 10039, PG. 0716 B.M. 2003, PG. 245 PIN: 0726-82-0398 (WAKE COUNTY)

WAKE COUNTY, NC 111 LAURA M. RIDICK REGISTER OF DEEDS PRESENTED & RECORDED ON 03/16/2005 AT 10:11:39

TOC PROJECT #'S: 04-SP-126 & 04-SP-127

SUBDIVISION MAP STONEWATER P.U.D. WHITE OAK TWS'P., WAKE COUNTY, N.C. WILLIAMS TWS'P., CHATHAM COUNTY, N.C. PREPARED FOR WATERFORD STONEWATER, L.L.C. CHAS. H. SELLS, INC. CONSULTING ENGINEERS, SURVEYORS, AND PHOTOGRAMMETRISTS 16300 WESTON PARKWAY, SUITE 106 CARY, NC 27513 PHONE: 919.678.0036 FAX: 919.678.0206 WWW.CHASSELLS.COM

REVISIONS table with columns: No., Description, Date.

RECORDED IN BOOK OF MAPS 2005 PAGE 0497 (WAKE CO.) (CHATHAM CO.)

Table with columns: Drawn By, Surveyed by, Checked by, File Name, Date, Scale, Job No., Drwg. No.