

**PICKETT
SPROUSE**
COMMERCIAL
REAL ESTATE



FOR SALE
3612 Shannon Road
Durham, NC

A WEST & WOODALL COMPANY

Link to aerial video: <https://www.youtube.com/watch?v=8fub6I1ANCo&feature=youtu.be>



- First Floor Office
- Located in Summit Office Park
- 1,862 Square Feet with 6 Offices, Reception Area & Conference Room
- Zoned OI (Office Institutional)
- Monthly Condo Association Fee \$305.34 (effective 6/1/2019)
- Asking \$341,250

For more information, please contact:

Mark Micol | mark.micol@westandwoodall.com | Direct 919-287-3048 | Cell 919-414-3159

Visit us at PickettSprouse.com

INFORMATION HEREIN IS SUBJECT TO VERIFICATION BY ALL PARTIES AND MAY CHANGE WITHOUT NOTICE.

1901 HILLANDALE ROAD, SUITE 100 • DURHAM, NC 27705 • 919.493.0395 • WWW.PICKETTSPROUSE.COM

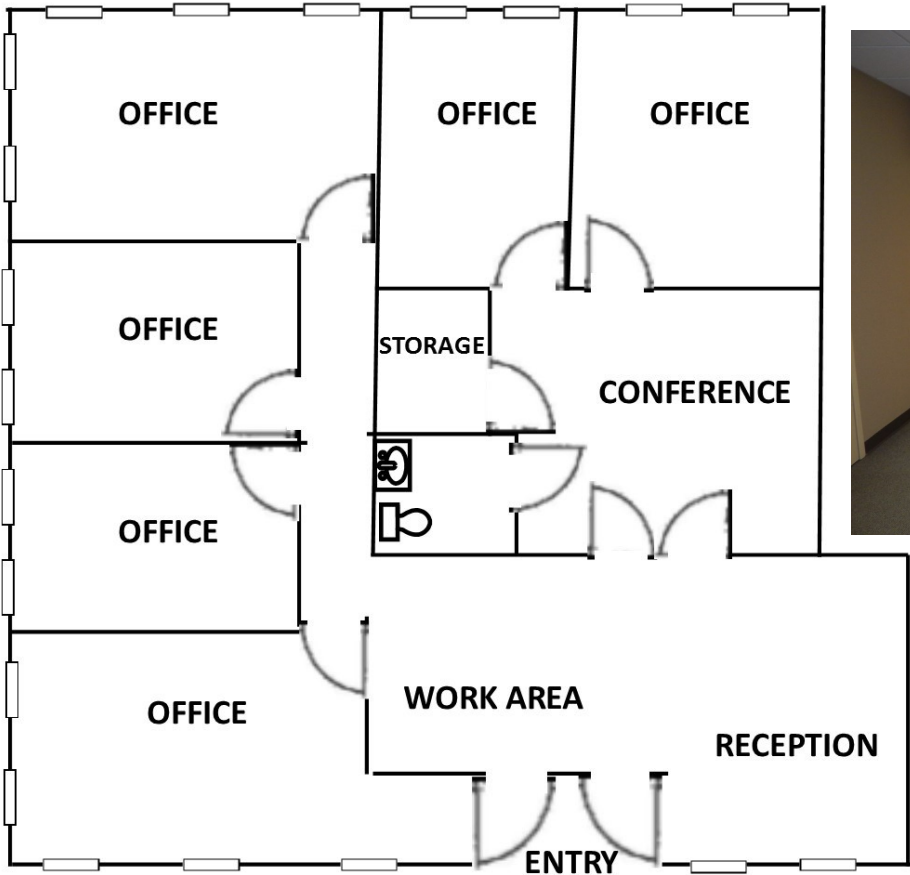
**PICKETT
SPROUSE**

COMMERCIAL
REAL ESTATE



A WEST & WOODALL COMPANY

FOR SALE
3612 Shannon Road
Durham, NC



For more information, please contact:

Mark Micol | mark.micol@westandwoodall.com | Direct 919-287-3048 | Cell 919-414-3159

Visit us at .PickettSprouse.com

INFORMATION HEREIN IS SUBJECT TO VERIFICATION BY ALL PARTIES AND MAY CHANGE WITHOUT NOTICE.

1901 HILLANDALE ROAD, SUITE 100 • DURHAM, NC 27705 • 919.493.0395 • WWW.PICKETTSPROUSE.COM