

4160 PIEDMONT PARKWAY, GREENSBORO, NC 27410



Office Center Suite For Lease in Greensboro

CONTACT BROKER FOR PRICING



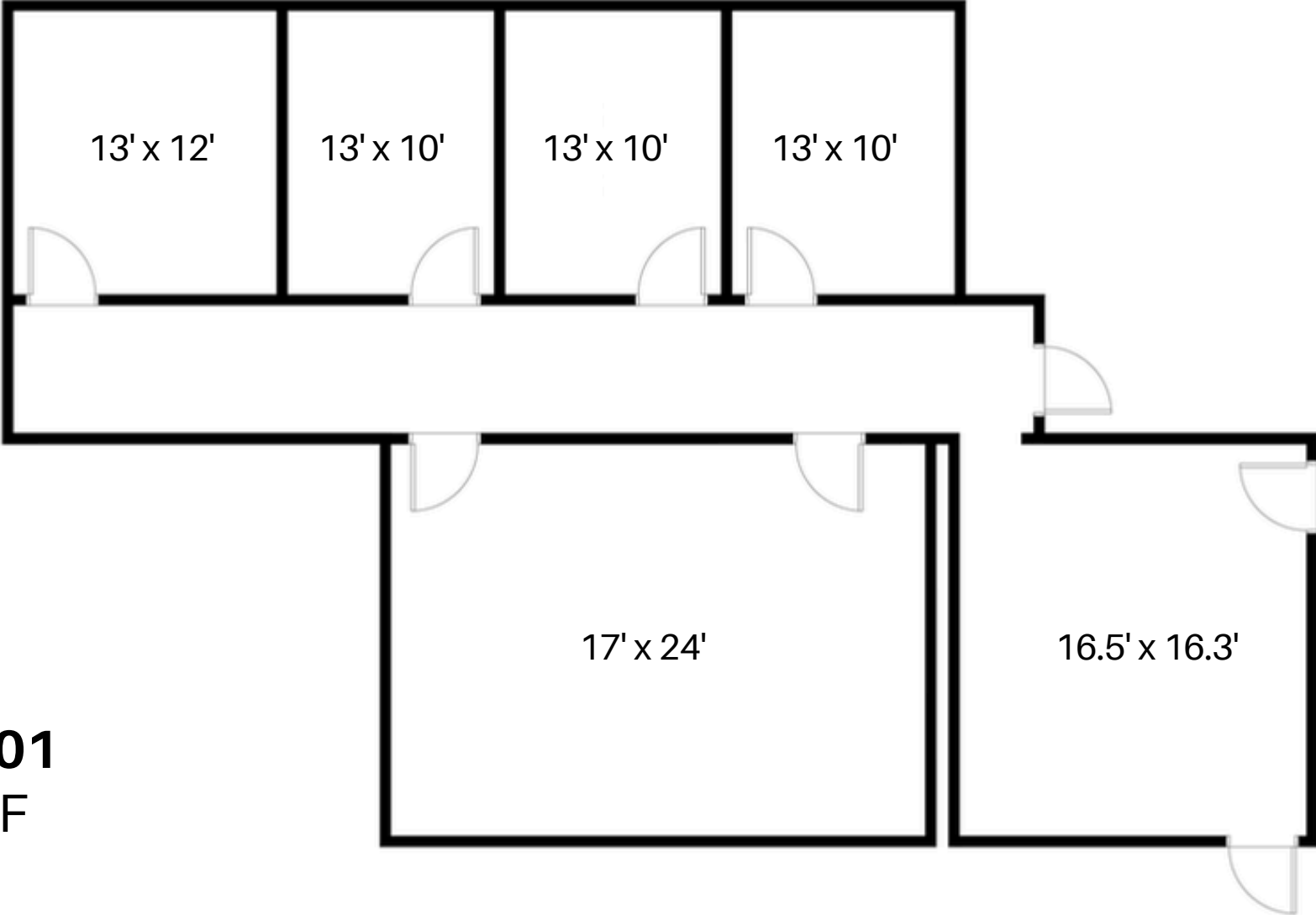
Property Details



Lease Rate	Contact Broker for Price
Total Square Footage	Suite 101: ±2171 SF
Lot Size	2.58 Acres
Zoning	LI (Light Industrial)
Year Built	1991

Piedmont Office Center offers a clean, secure office environment in a convenient yet quiet location. The property features flexible office suites with keycard access, ample parking, and a straightforward layout ideal for office-related professional and service businesses. With easy access to major roadways and nearby amenities, this well-maintained office space provides a practical, high-quality setting for day-to-day operations.

Floorplan



Suite 101
2,171 SF





POPULATION

	2 miles	5 miles	10 miles
2020 Population	14,673	106,748	416,013
2024 Population	14,666	106,927	418,393
2029 Population Projection	14,633	106,739	420,139
Annual Growth 2020-2024	0%	0%	0.1%
Annual Growth 2024-2029	0%	0%	0.1%
Median Age	39.1	39.6	37.9
Bachelor's Degree or Higher	49%	43%	36%
U.S. Armed Forces	48	96	429

HOUSEHOLDS

	2 mile	5 mile	10 mile
2020 Households	6,309	46,902	170,478
2024 Households	6,288	46,946	171,677
2029 Household Projection	6,270	46,851	172,444
Annual Growth 2020-2024	0.7%	0.8%	0.8%
Annual Growth 2024-2029	-0.1%	0%	0.1%
Owner Occupied Households	3,604	25,464	94,374
Renter Occupied Households	2,666	21,386	78,070
Avg Household Size	2.3	2.2	2.3
Avg Household Vehicles	2	2	2
Total Specified Consumer Spending (\$)	\$203.3M	\$1.4B	\$4.9B

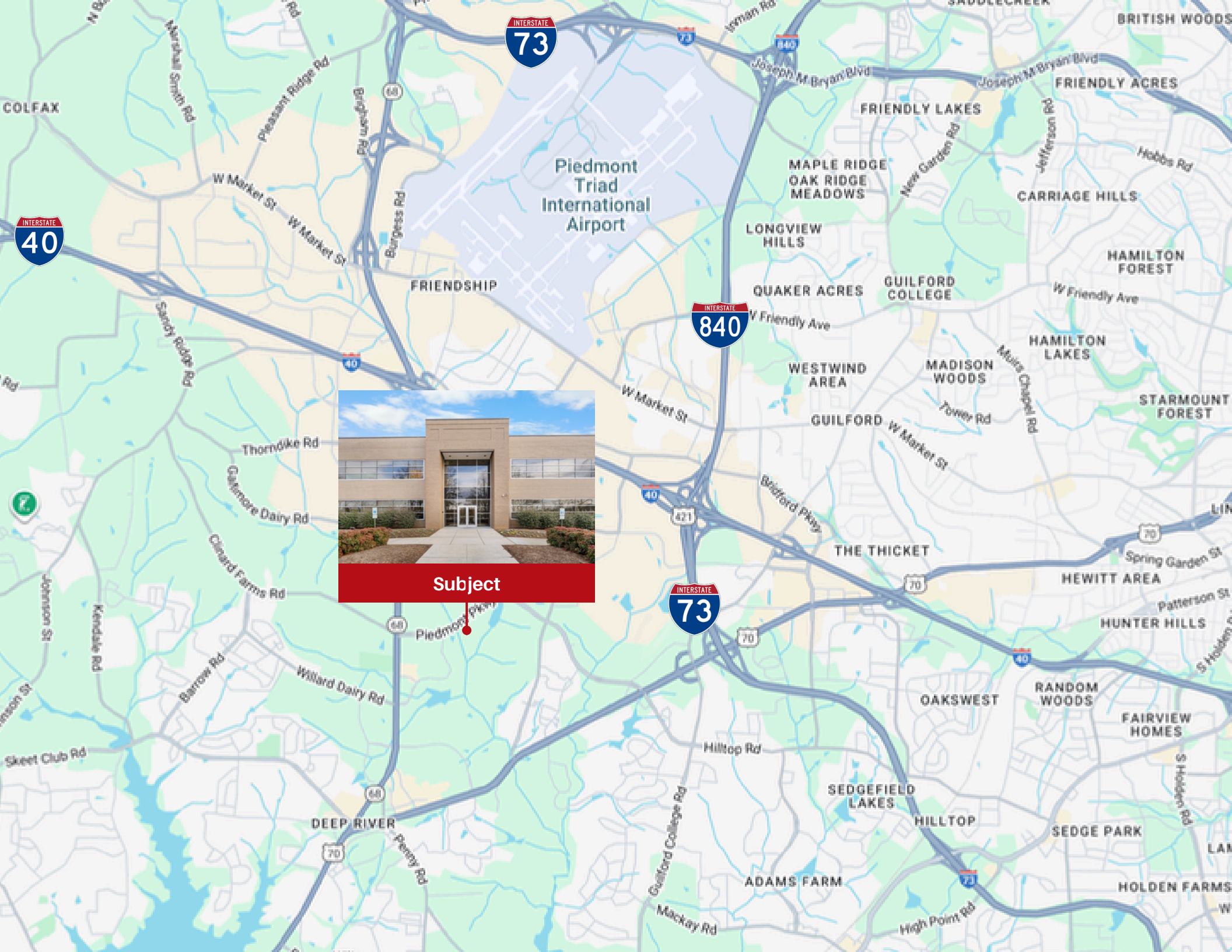


Piedmont Parkway
← 4,200 Cars/Day →

← 3,900 Cars/Day →

Subject

Sheraton Court



Subject



Pickett Sprouse Commercial Real Estate
(919) 493-0395

Contact Us

Brad Gregory
brad@pickettsprouse.com
(336) 202-0012

Noah Morrell
noah@pickettsprouse.com
(919) 530-0481

pickettsprouse.com

