

1. Review Officer
of Durham County, certify that the map or plat to which this
certification is affixed meets all statutory requirements for
recording.

Date _____ Review Officer _____

**NOTE: SEE SHEET 1 of 2
FOR ALL NOTES AND
SIGNATURES.**

SEE DETAIL
INSET (A)

SEE DETAIL
INSET (A)

SEE DETAIL
INSET (A)

SEE DETAIL
INSET (A)

SEE DETAIL
INSET (A)

SEE DETAIL
INSET (A)

SEE DETAIL
INSET (A)

SEE DETAIL
INSET (A)

SEE DETAIL
INSET (A)

SEE DETAIL
INSET (A)

SEE DETAIL
INSET (A)

SEE DETAIL
INSET (A)

SEE DETAIL
INSET (A)

SEE DETAIL
INSET (A)

SEE DETAIL
INSET (A)

SEE DETAIL
INSET (A)

SEE DETAIL
INSET (A)

SEE DETAIL
INSET (A)

SEE DETAIL
INSET (A)

SEE DETAIL
INSET (A)

SEE DETAIL
INSET (A)

SEE DETAIL
INSET (A)

SEE DETAIL
INSET (A)

SEE DETAIL
INSET (A)

SEE DETAIL
INSET (A)

SEE DETAIL
INSET (A)

SEE DETAIL
INSET (A)

SEE DETAIL
INSET (A)

SEE DETAIL
INSET (A)

SEE DETAIL
INSET (A)

SEE DETAIL
INSET (A)

SEE DETAIL
INSET (A)

SEE DETAIL
INSET (A)

SEE DETAIL
INSET (A)

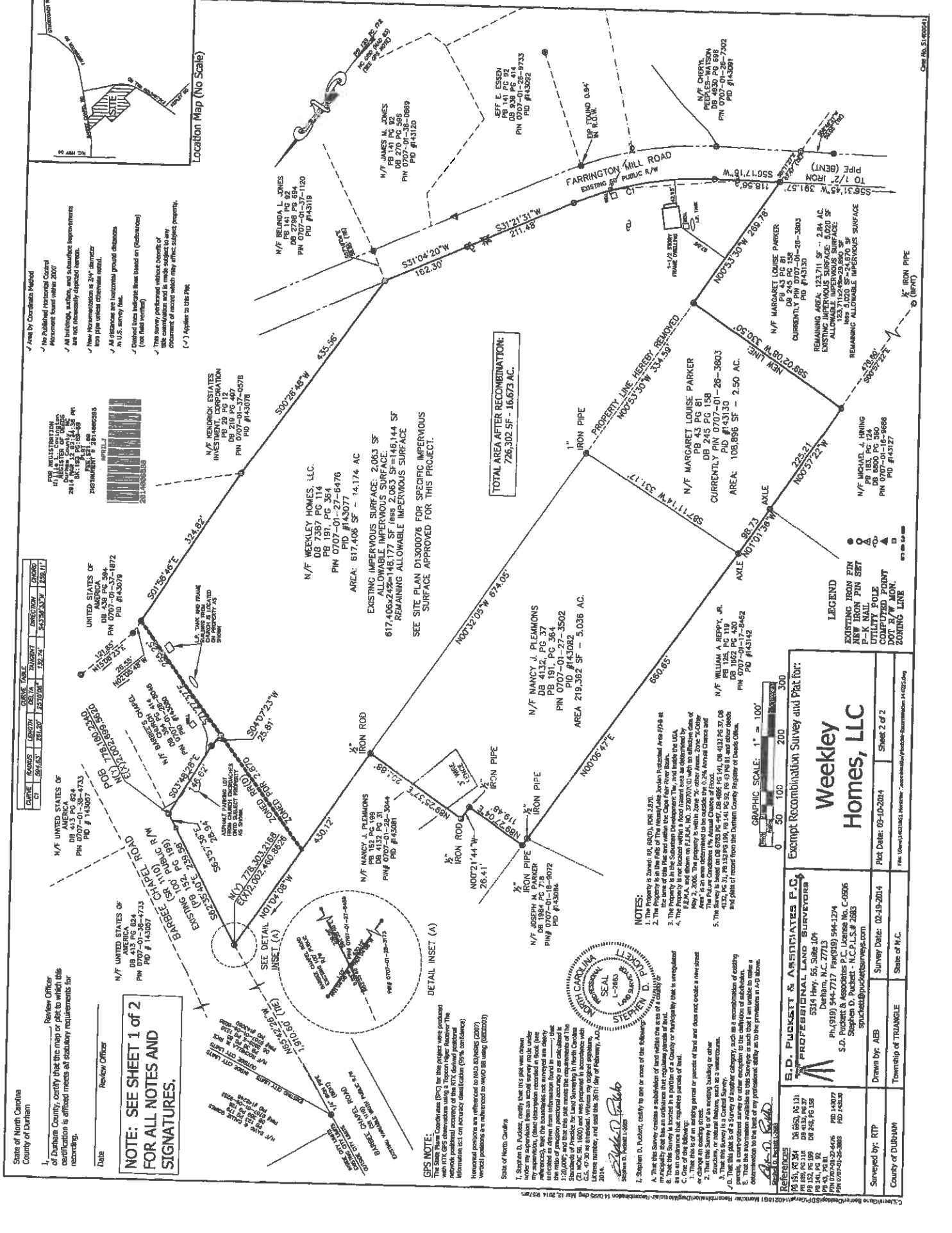
SEE DETAIL
INSET (A)

SEE DETAIL
INSET (A)

SEE DETAIL
INSET (A)

SEE DETAIL
INSET (A)

SEE DETAIL
INSET (A)



CURVE	BEARING	LENGTH	DELTA	TANGENT	CHORD	CHORD BEARING
C1	S81°55'18.37\"	83.307	23.70156	138.742	54.5363337	228.117

UNITED STATES OF AMERICA
DB 413 PG 624
PH 0707-01-38-4733
PID #143057

UNITED STATES OF AMERICA
DB 430 PG 594
PH 0707-01-37-1872
PID #143079

UNITED STATES OF AMERICA
DB 413 PG 624
PH 0707-01-38-4733
PID #143057

UNITED STATES OF AMERICA
DB 413 PG 624
PH 0707-01-38-4733
PID #143057

UNITED STATES OF AMERICA
DB 413 PG 624
PH 0707-01-38-4733
PID #143057

UNITED STATES OF AMERICA
DB 413 PG 624
PH 0707-01-38-4733
PID #143057

UNITED STATES OF AMERICA
DB 413 PG 624
PH 0707-01-38-4733
PID #143057

UNITED STATES OF AMERICA
DB 413 PG 624
PH 0707-01-38-4733
PID #143057

UNITED STATES OF AMERICA
DB 413 PG 624
PH 0707-01-38-4733
PID #143057

UNITED STATES OF AMERICA
DB 413 PG 624
PH 0707-01-38-4733
PID #143057

UNITED STATES OF AMERICA
DB 413 PG 624
PH 0707-01-38-4733
PID #143057

UNITED STATES OF AMERICA
DB 413 PG 624
PH 0707-01-38-4733
PID #143057

UNITED STATES OF AMERICA
DB 413 PG 624
PH 0707-01-38-4733
PID #143057

UNITED STATES OF AMERICA
DB 413 PG 624
PH 0707-01-38-4733
PID #143057

UNITED STATES OF AMERICA
DB 413 PG 624
PH 0707-01-38-4733
PID #143057

UNITED STATES OF AMERICA
DB 413 PG 624
PH 0707-01-38-4733
PID #143057

UNITED STATES OF AMERICA
DB 413 PG 624
PH 0707-01-38-4733
PID #143057

UNITED STATES OF AMERICA
DB 413 PG 624
PH 0707-01-38-4733
PID #143057

Area by Coordinate Method
No Published Abridged Coast
Measurement found within 200'
All bearings, sections, and subsections
are not necessarily supported by
New Measurement is 3/4" diameter
iron pipe unless otherwise noted.
All distances are horizontal ground distances
in U.S. survey feet.
Detailed lines indicate true bearings of
(see field notes)
This survey conducted without benefit of
the contribution and is made subject to any
document of record which may affect subject property.
(*) Applies to this PK

N/F JAMES H. JONES
DB 270 PG 366
PH 0707-01-28-9733
PID #143128

N/F BEONDIA L. JONES
DB 141 PG 62
PH 0707-01-120
PID #143318

N/F MARGARET LOUISE PARKER
DB 245 PG 158
PH 0707-01-28-3803
PID #143150

N/F MARGARET LOUISE PARKER
DB 245 PG 158
PH 0707-01-28-3803
PID #143150

N/F MARGARET LOUISE PARKER
DB 245 PG 158
PH 0707-01-28-3803
PID #143150

N/F MARGARET LOUISE PARKER
DB 245 PG 158
PH 0707-01-28-3803
PID #143150

N/F MARGARET LOUISE PARKER
DB 245 PG 158
PH 0707-01-28-3803
PID #143150

N/F MARGARET LOUISE PARKER
DB 245 PG 158
PH 0707-01-28-3803
PID #143150

N/F MARGARET LOUISE PARKER
DB 245 PG 158
PH 0707-01-28-3803
PID #143150

N/F MARGARET LOUISE PARKER
DB 245 PG 158
PH 0707-01-28-3803
PID #143150

N/F MARGARET LOUISE PARKER
DB 245 PG 158
PH 0707-01-28-3803
PID #143150

N/F MARGARET LOUISE PARKER
DB 245 PG 158
PH 0707-01-28-3803
PID #143150

N/F MARGARET LOUISE PARKER
DB 245 PG 158
PH 0707-01-28-3803
PID #143150

N/F MARGARET LOUISE PARKER
DB 245 PG 158
PH 0707-01-28-3803
PID #143150

N/F MARGARET LOUISE PARKER
DB 245 PG 158
PH 0707-01-28-3803
PID #143150

N/F MARGARET LOUISE PARKER
DB 245 PG 158
PH 0707-01-28-3803
PID #143150

N/F MARGARET LOUISE PARKER
DB 245 PG 158
PH 0707-01-28-3803
PID #143150

N/F MARGARET LOUISE PARKER
DB 245 PG 158
PH 0707-01-28-3803
PID #143150

NOTES:

- The property is located in the County of Durham, State of North Carolina.
- The property is located in the County of Durham, State of North Carolina.
- The property is located in the County of Durham, State of North Carolina.
- The property is located in the County of Durham, State of North Carolina.
- The property is located in the County of Durham, State of North Carolina.

LEGEND

- EXISTING IRON PIPE
- IRON PIPE SET
- UTILITY POLE
- COMPUTED POINT
- DOT R/W MON.
- ZONING LINE

GRAPHIC SCALE: 1" = 100'

Weekley Homes, LLC

S.D. PUCKETT & ASSOCIATES P.C.
PROFESSIONAL LAND SURVEYORS
5314 Hwy. 55, Suite 107
Durham, N.C. 27713
PH (919) 544-7717 FAX (919) 544-1274
S.D. PUCKETT & ASSOCIATES P.C. License No. C-0506
Stephen D. Puckett - N.C. P.L.S. # 2683
spuckett@puckettandassociates.com

Drawn by: AEB Survey Date: 02-19-2014 State of N.C.
Township of TRIANGLE
County of DURHAM

Surveyed by: RTP

