

**PICKETT
SPROUSE**

COMMERCIAL
REAL ESTATE



CONDO OFFICE INVESTMENT FOR SALE

**307 Meadowland Drive
Hillsborough, NC**

A WEST & WOODALL COMPANY

Link to aerial video: <https://www.youtube.com/watch?v=t6RdVj7vPIU>



SPACES: Two Condo Units - 1,215 SF (1st floor) and 1,280 SF (2nd floor)

FEATURES: Two-story twin office condominium buildings in a well maintained business park. Three condo units per building. Fully Leased Investment Opportunity. Two units being sold together under one lease (law office).

LOCATION: In The Meadowlands business campus just off Interstate 85, Exit 165. From I-85, go north on Hwy 86. Turn right on Business 70-A. Meadowland Dr. will be on the right.

INVESTMENT SALES PRICES:

307 Meadowlands: Units 101 & 201 Leased – Ends 4th quarter 2022

\$320,000 (both units)

Please contact: **Mark O'Neal, CCIM**
mark.oneal@westandwoodall.com (919) 287-3051

Emilee Collins
emilee@westandwoodall.com (919) 730-7040
Visit us at PickettSprouse.com

PICKETT
SPROUSE

COMMERCIAL
REAL ESTATE



A WEST & WOODALL COMPANY

307 Meadowland Dr.
Hillsborough, NC 27278



Please contact:

Mark O'Neal, CCIM

mark.oneal@westandwoodall.com

(919) 287-3051

Emilee Collins

emilee@westandwoodall.com

(919) 730-7040

Visit us at PickettSprouse.com

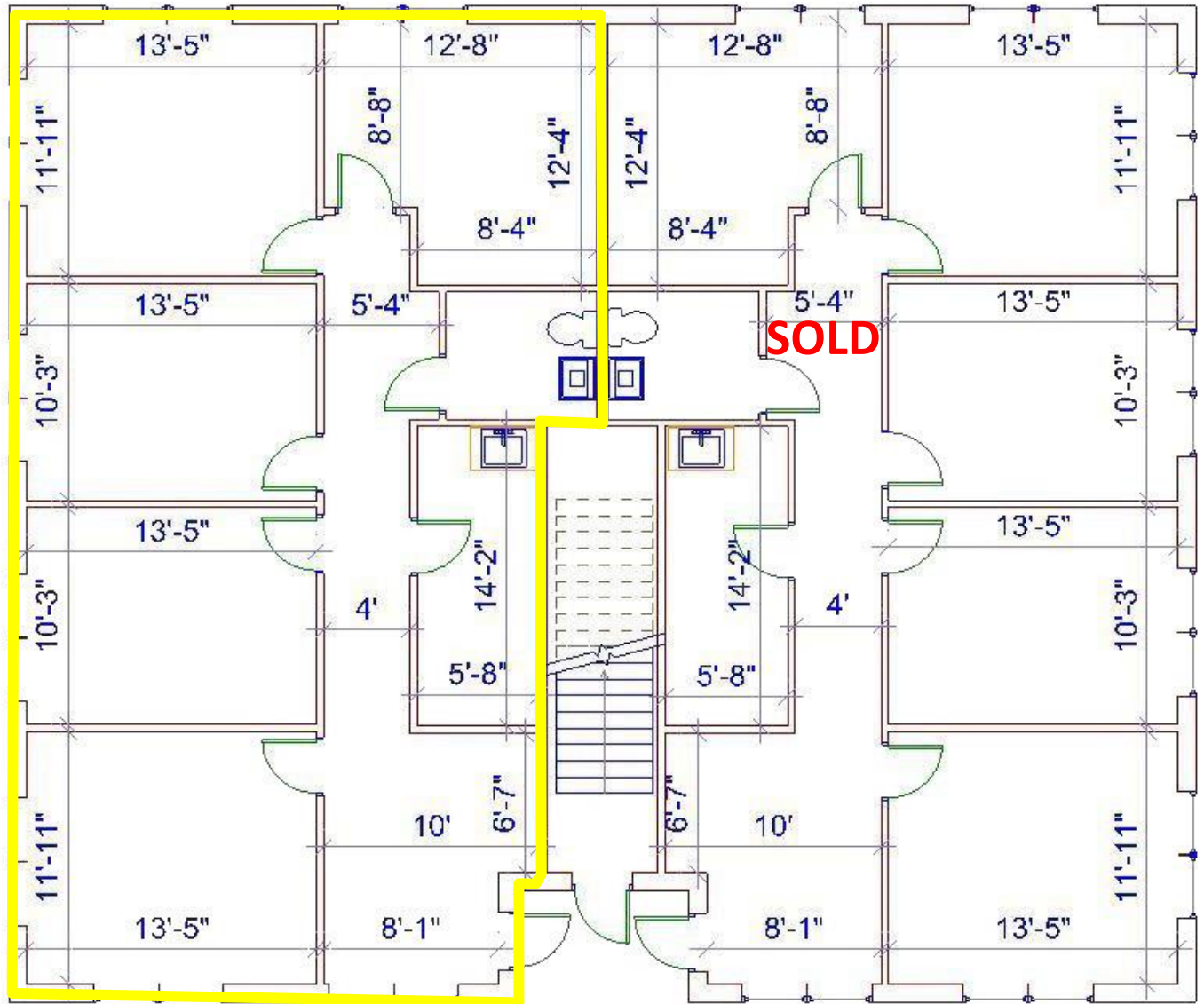


INFORMATION HEREIN IS SUBJECT TO VERIFICATION BY ALL PARTIES AND MAY CHANGE WITHOUT NOTICE.
1901 HILLDALE ROAD, SUITE 100 • DURHAM, NC 27705 • 919.493.0395 • WWW.PICKETTSPROUSE.COM

FOR MORE INFORMATION CONTACT
 Mark O'Neal (919) 287-3051
 mark.oneal@westandwoodall.com
 Emilee Collins (919) 730-7040
 emilee@westandwoodall.com

307 Meadowland Dr.
 Hillsborough, NC 27278

FIRST FLOOR
INTERIOR DIMENTIONS ARE NOT EXACT



SUITE 101
APPROX 1,215 SF

SUITE 102
APPROX 1,215 SF

307 Meadowland Dr.
Hillsborough, NC 27278

FOR MORE INFORMATION CONTACT

Mark O'Neal (919) 287-3051

mark.oneal@westandwoodall.com

Emilee Collins (919) 730-7040

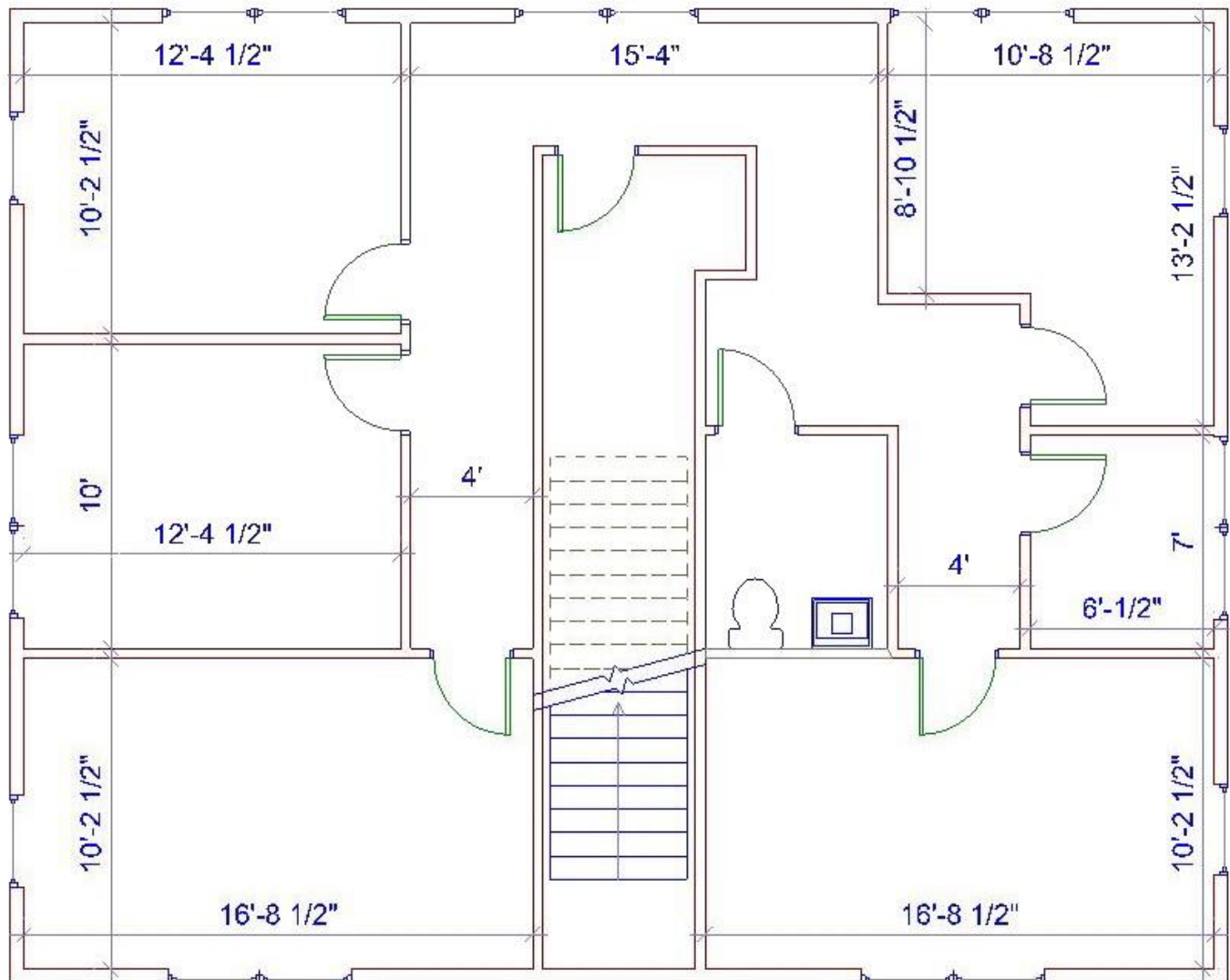
emilee@westandwoodall.com

SUITE 201

APPROX 1,280 SF

SECOND FLOOR

INTERIOR DIMENSIONS ARE NOT EXACT





FOR MORE INFORMATION CONTACT

Mark O'Neal (919) 287-3051

mark.oneal@westandwoodall.com

Emilee Collins (919) 730-7040

emilee@westandwoodall.com

307 Meadowland Dr.
Hillsborough, NC 27278

Site Plan

