



FOR SALE

Borland Road

near Dodson Crossroads
Orange County, NC

15.56 acres

Zoned Residential, RB Rural Buffer

- LOT:** 15.56 acre tract zoned RB Rural Buffer
- DESCRIPTION:** Upland hardwood ridge overlooking small creek bottom. Potential to sub-divide.
- LOCATION:** From I-40 (Exit 263), west on New Hope Church through four-way stop; continue west on Arthur Minnis one mile to right on Borland (three miles on left before Dodson's Crossroad).
- ASKING PRICE:** LOT 3—15.56 acres: \$249,000

Contact

Mark O'Neal

(919) 493-0395

marko@pickett-sprouse.com

Visit our website

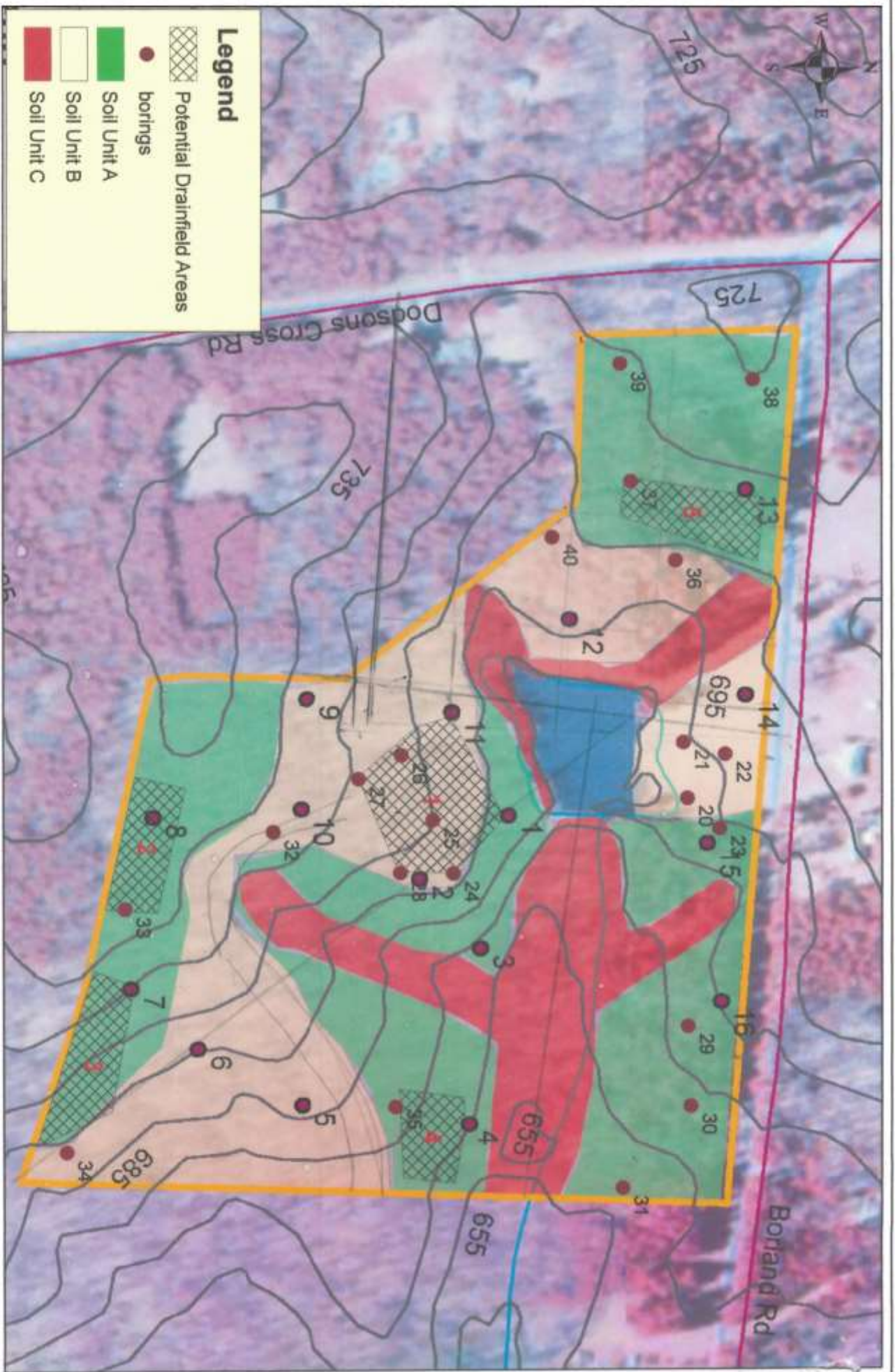
www.pickett-sprouse.com

Select Residential Land

Borland Road

INFORMATION HEREIN IS SUBJECT TO VERIFICATION BY ALL PARTIES AND MAY CHANGE WITHOUT NOTICE.

3805-A UNIVERSITY DR. • PO BOX 52118 • DURHAM, NC 27717 • 919.493.0395 • 919.493.1523 FAX



Soil and Site Evaluation
KZT Tract
Orange County, NC



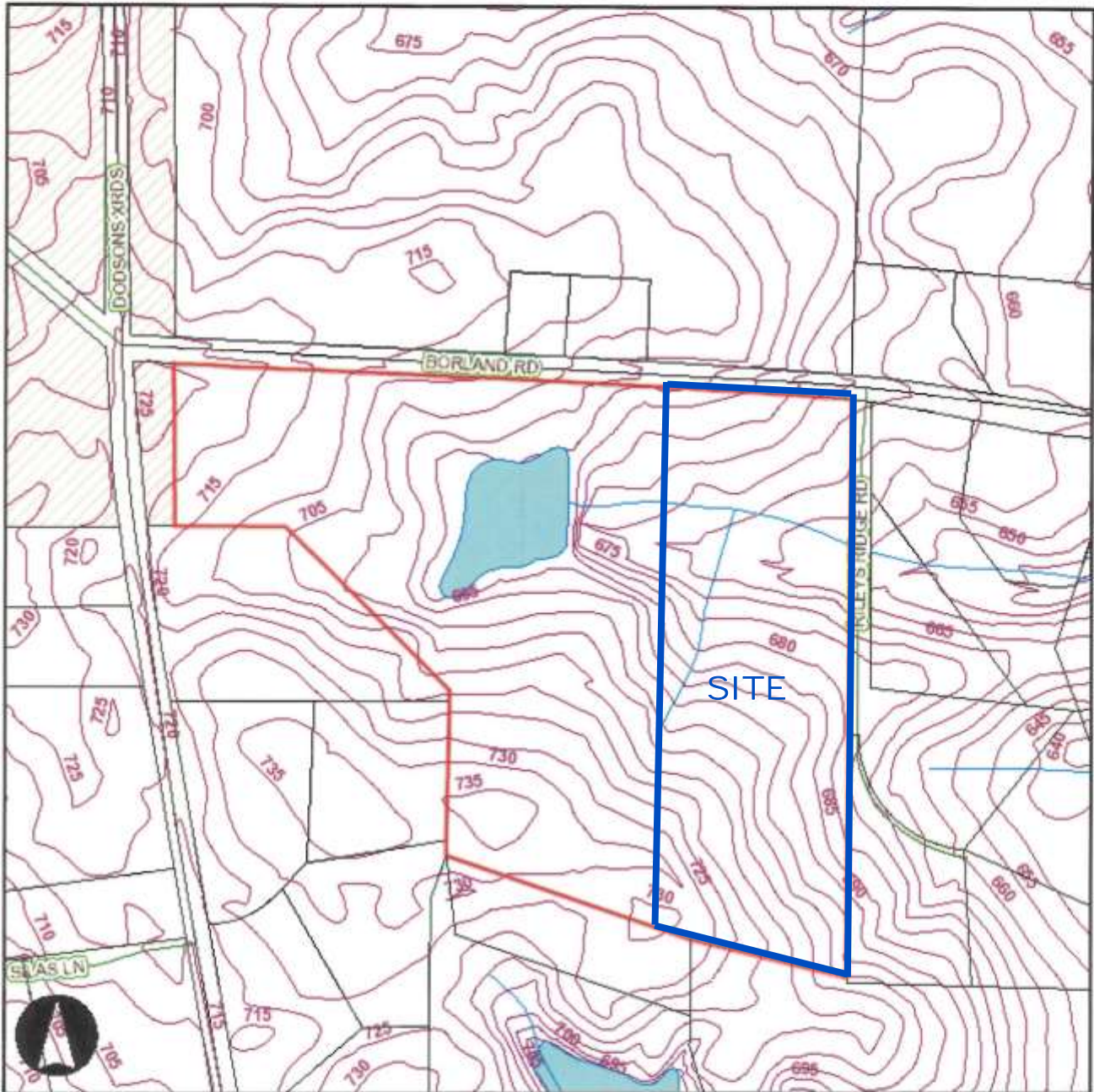
Date: April 2008
 Scale: 1 inch equals 250 feet
 Job No.: 7255

Figure
1



Orange County, NC GIS

Mark O'Neal
(919) 493-0395
marko@pickett-sprouse.com



1 inch = 400 feet
Created on 11/27/2012. Orange County, North Carolina.