

960 Corporate Drive, Ste 301 ~ Hillsborough

Emilee Collins

emilee@pickettsprouse.com

(919) 730-7040

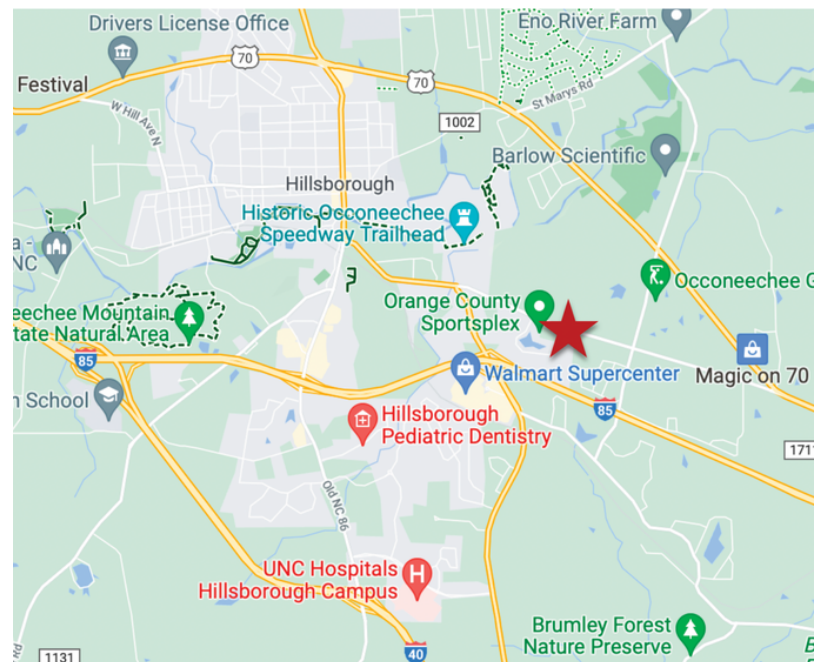


PROPERTY OVERVIEW

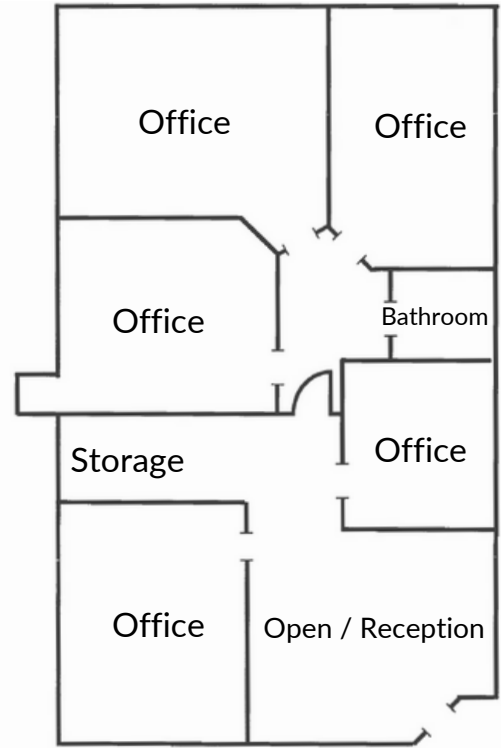


PROPERTY HIGHLIGHTS

- \$2,600/month + Utility Share
- 1,500 SF Including Common Areas
- Spacious Offices With Windows
- Open Office/ Reception Area
- Great Parking
- Minutes From Downtown Hillsborough
- Convenient to I-85/ I-40



960 Corporate Drive, Ste 301 ~ Hillsborough



Approximately 1,500 SF



Emilee Collins

emilee@pickettsprouse.com

(919) 730-7040