

HILLSBOROUGH

Office Space For Lease

\$1,775/MONTH PLUS UTILITIES



218 S. Churton ST, STE 105, HILLSBOROUGH, NC 27278



Leasing an Office Space in Downtown Hillsborough where you can mix business and pleasure with the quaint retail scene and natural resources like The Riverwalk. Convenient to I-85 & I-40, RDU and RTP.

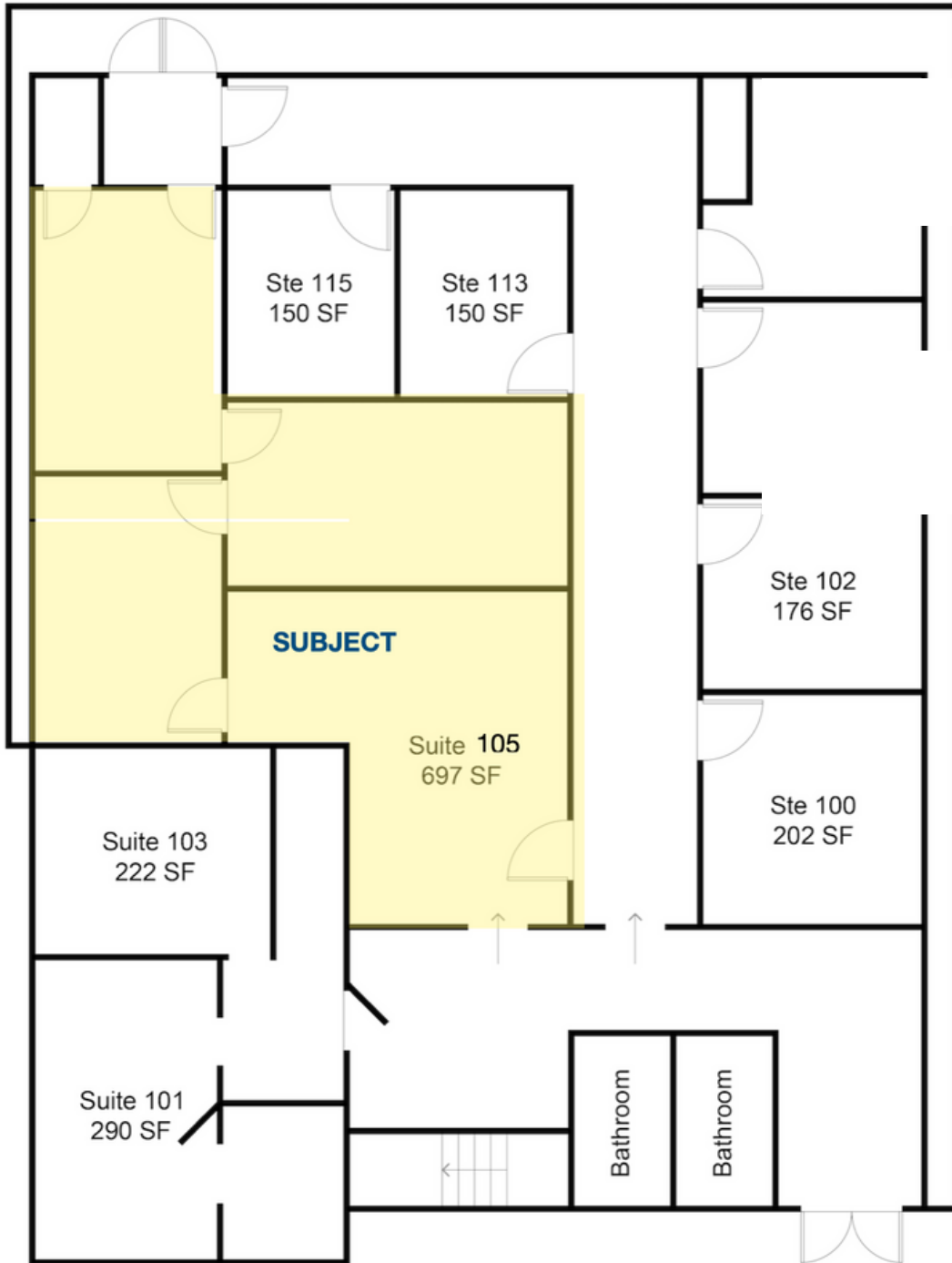
Emilee Collins, CCIM
(919) 730-7040
emilee@pickettsprouse.com

Property Details

- **\$1,775/month + Utilities**
- **Approximately 697 SF**
- **Quiet, Professional Offices**
- **Filled With Natural Light**



Floor Plan



Floor Plan not drawn to scale. All measurements are approximate. Common Area Square Footage included in listed SF.