

# HILLSBOROUGH Office For Lease

**\$475/MONTH + \$20 UTILITIES**



**960 CORPORATE DRIVE, STE 402, HILLSBOROUGH, NC, 27278**



Quality office space in a professional setting with great parking, shared waiting area, and kitchenette.

Zoned for high-intensity commercial use and conveniently located just off I-85/I-40 and US 70, minutes from downtown Hillsborough.

**Emilee Collins, CCIM**  
(919) 730-7040  
emilee@pickettsprouse.com

**Matthew Morton**  
(919) 864-0864  
matthew@pickettsprouse.com

# Property Details

Monthly Lease Rate

\$475 + \$20 Utilities

Square Footage

120 SF

Zoning

High Intensity Commercial

Parcel Number

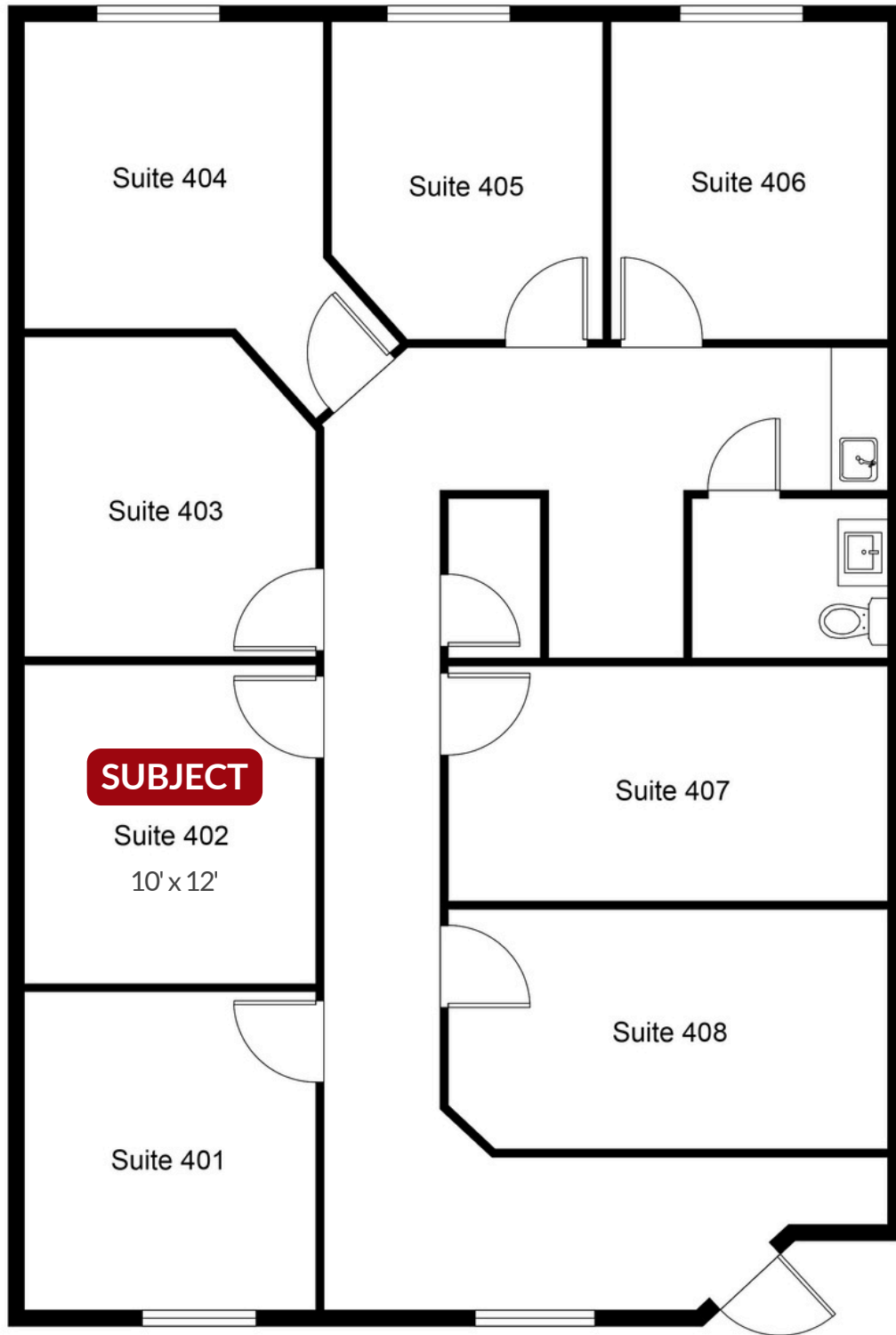
9874614816



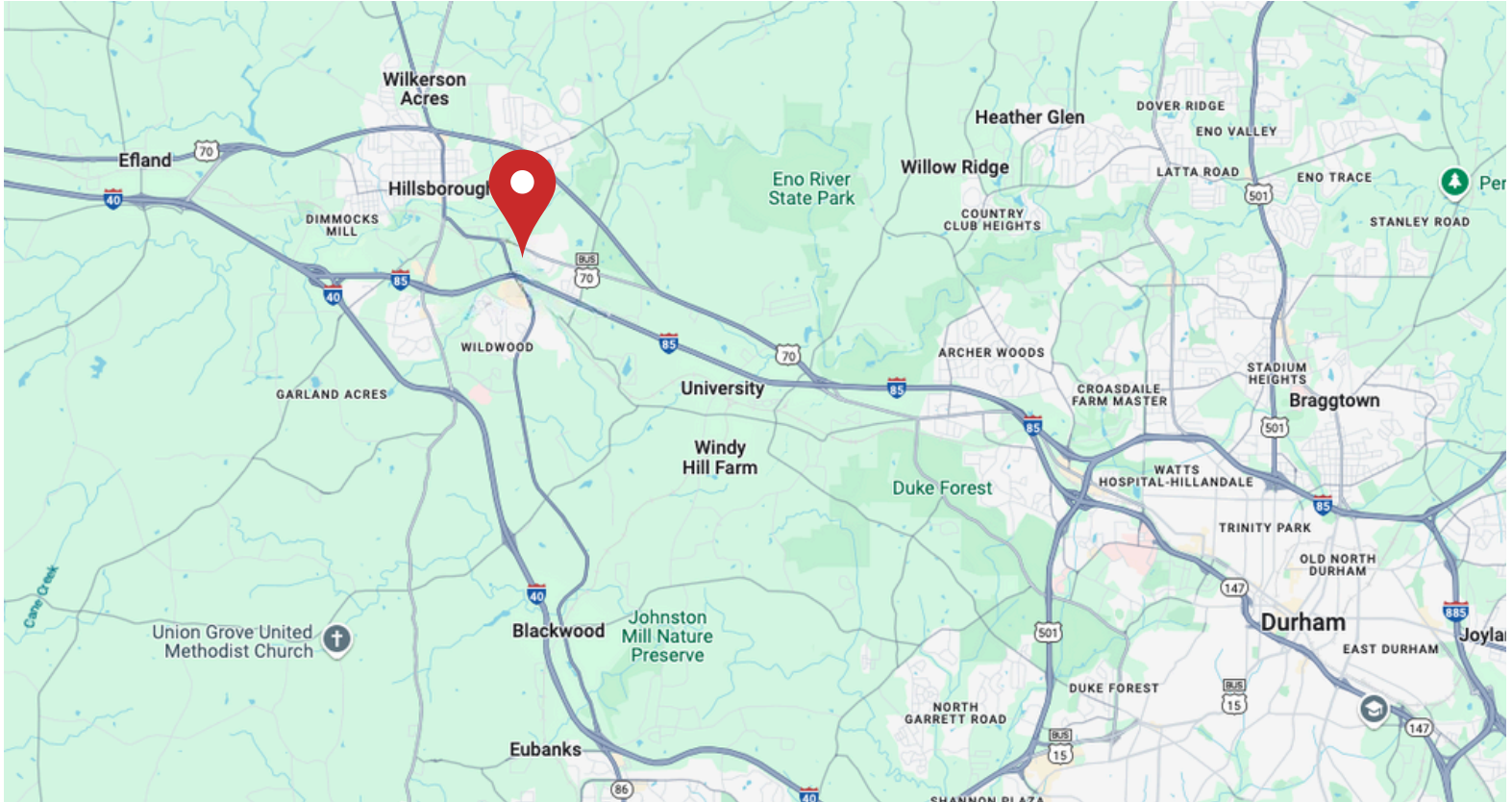
**Emilee Collins, CCIM**  
(919) 730-7040  
emilee@pickettsprouse.com

**Matthew Morton**  
(919) 864-0864  
matthew@pickettsprouse.com

# Floor Plan



# 960 CORPORATE DRIVE, STE 402, HILLSBOROUGH, NC, 27278



**Emilee Collins, CCIM**  
(919) 730-7040  
emilee@pickettsprouse.com

**Matthew Morton**  
(919) 864-0864  
matthew@pickettsprouse.com