

HILLSBOROUGH Office For Lease

\$2,350/MO + \$150/MO UTILITIES



1000 CORPORATE DRIVE, STE 109, HILLSBOROUGH, NC, 27278



Spacious office suite in a professional complex featuring ample parking, reception area, kitchenette, and conference room.

Zoned for high-intensity commercial use, conveniently located just off I-85/I-40 and US 70, with quick access to downtown Hillsborough.

Emilee Collins, CCIM
(919) 730-7040
emilee@pickettsprouse.com

Matthew Morton
(919) 864-0864
matthew@pickettsprouse.com

Property Details

Monthly Lease Rate

\$2,350/mo + \$150/mo Utilities

Square Footage

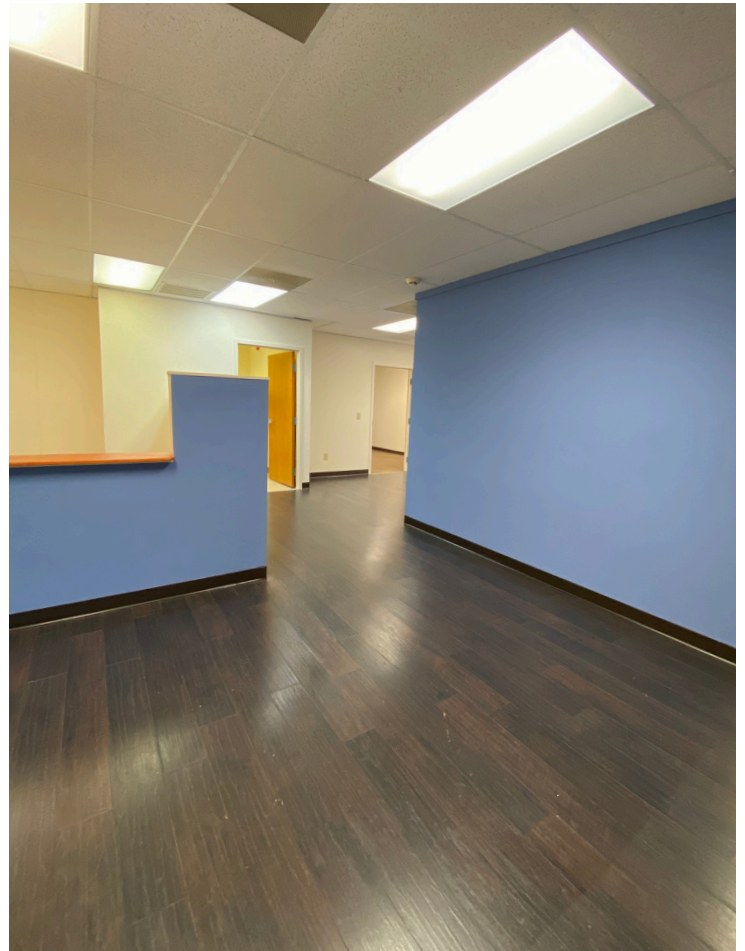
1,140 SF

Zoning

High Intensity Commercial

Parcel Number

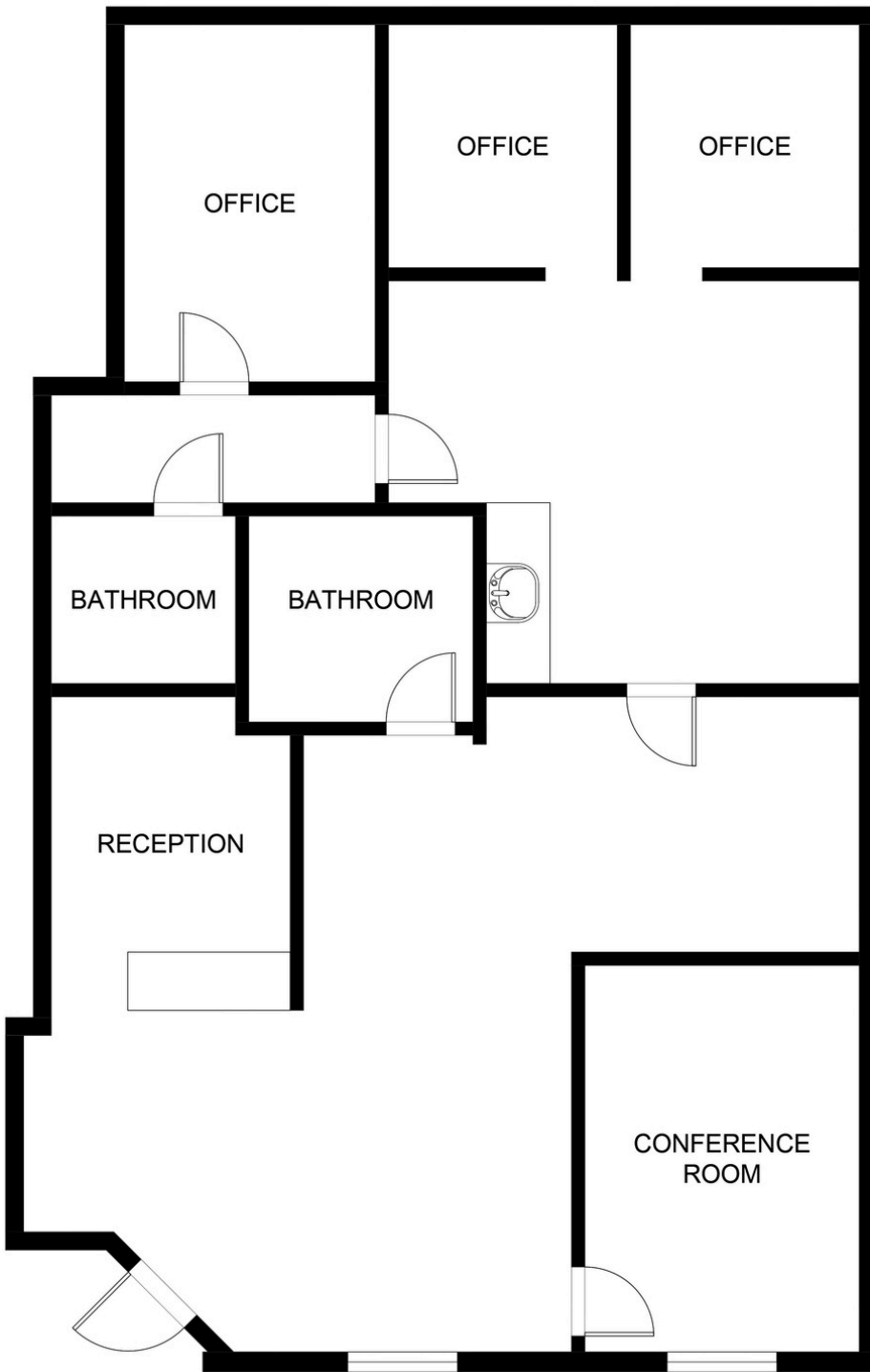
9874616773



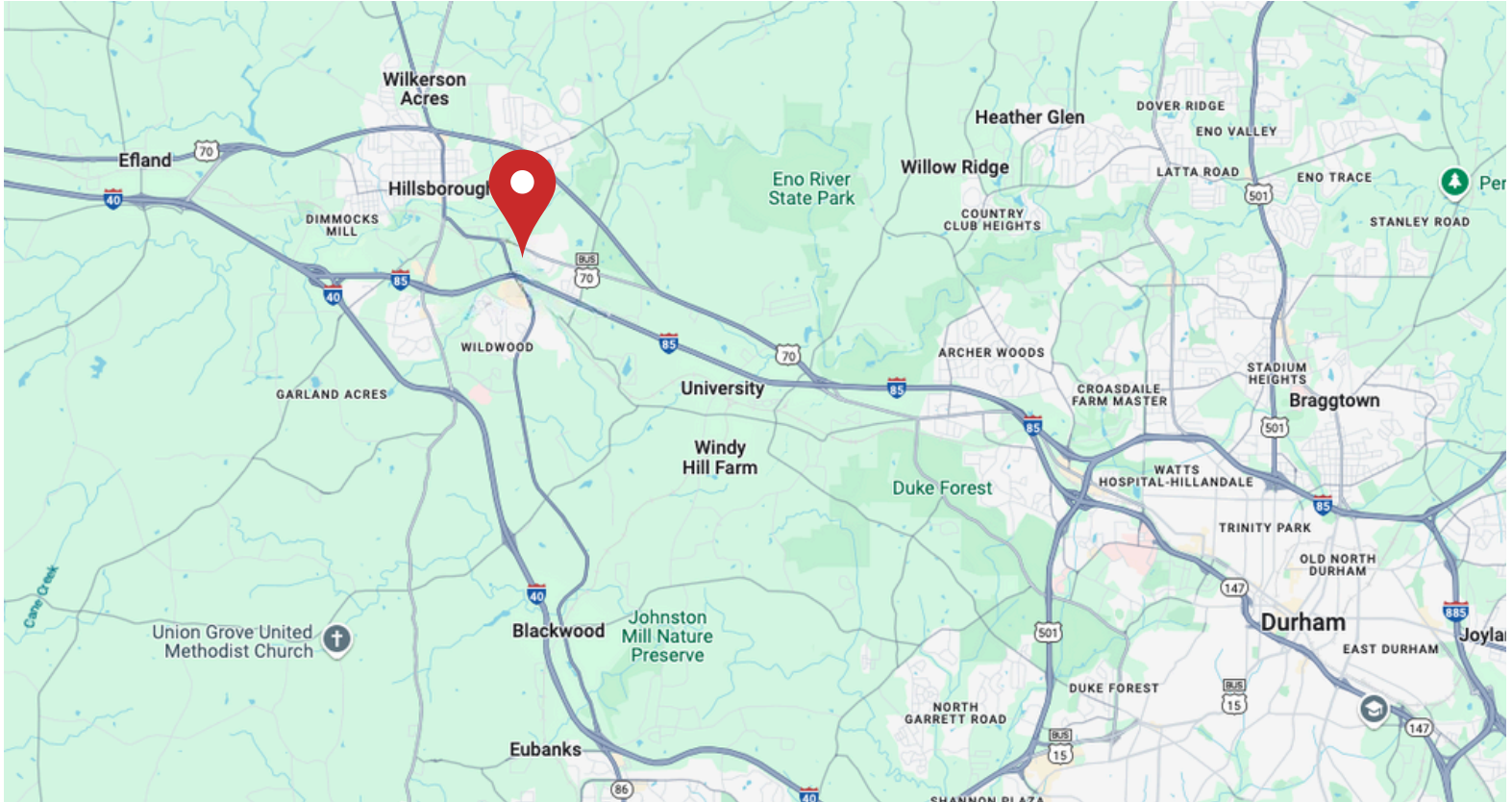
Emilee Collins, CCIM
(919) 730-7040
emilee@pickettsprouse.com

Matthew Morton
(919) 864-0864
matthew@pickettsprouse.com

Floor Plan



1000 CORPORATE DRIVE, STE 109, HILLSBOROUGH, NC, 27278



Emilee Collins, CCIM
(919) 730-7040
emilee@pickettsprouse.com

Matthew Morton
(919) 864-0864
matthew@pickettsprouse.com