

# HILLSBOROUGH Office For Lease

**\$1,350/MONTH + \$65/MONTH UTILITIES**



**960 CORPORATE DRIVE, STE 101, HILLSBOROUGH, NC, 27278**



Quality office space in a professional setting with ample parking, large windows throughout, a conference room, and a workroom.

Zoned for high-intensity commercial use and conveniently located off I-85, I-40, and US-70, just minutes from downtown Hillsborough.

**Emilee Collins, CCIM**  
(919) 730-7040  
emilee@pickettsprouse.com

**Matthew Morton**  
(919) 864-0864  
matthew@pickettsprouse.com

# Property Details

Monthly Lease Rate

\$1,350/mo + \$65/mo Utilities

Square Footage

638 SF

Zoning

High Intensity Commercial

Parcel Number

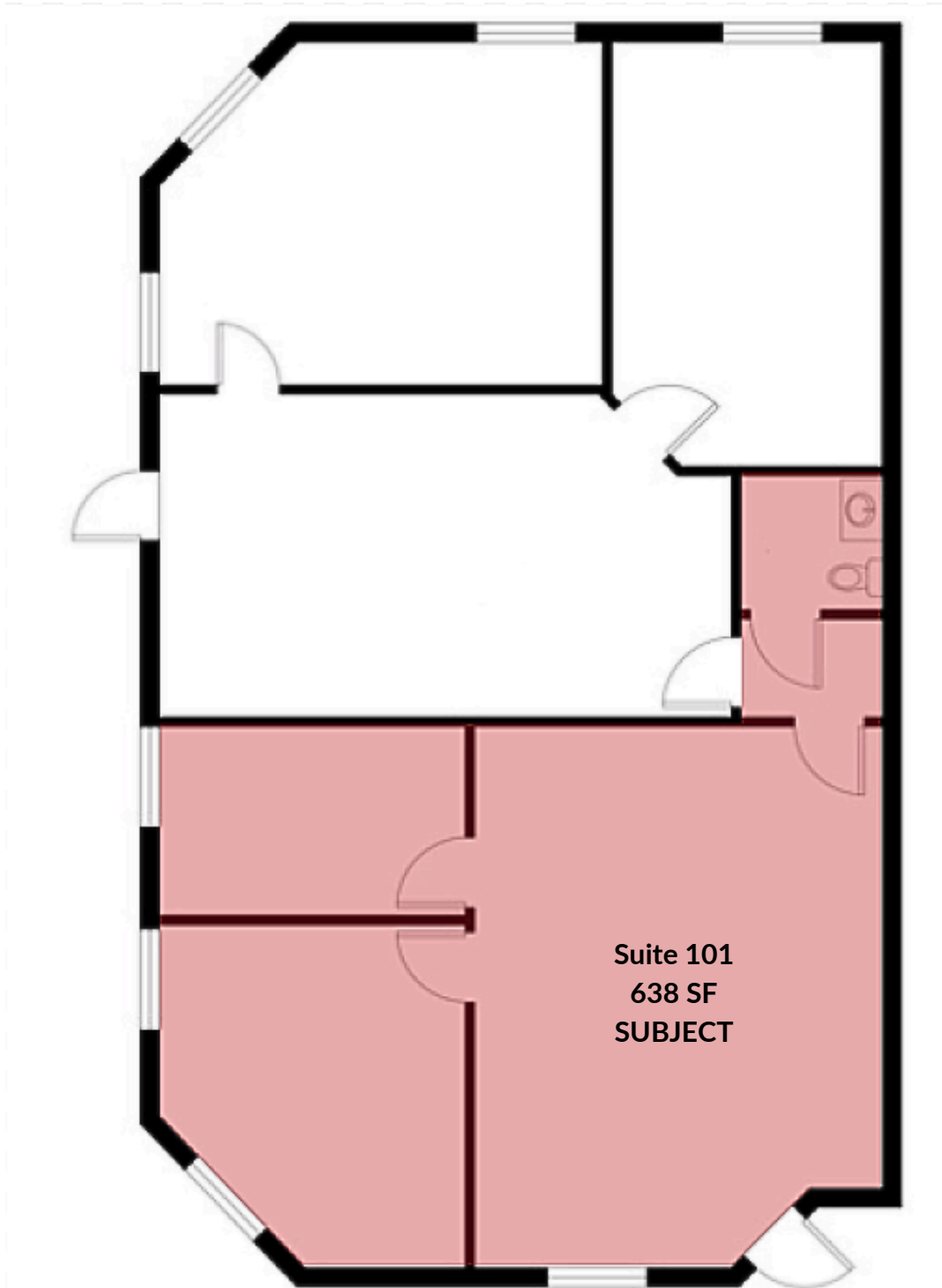
9874614816



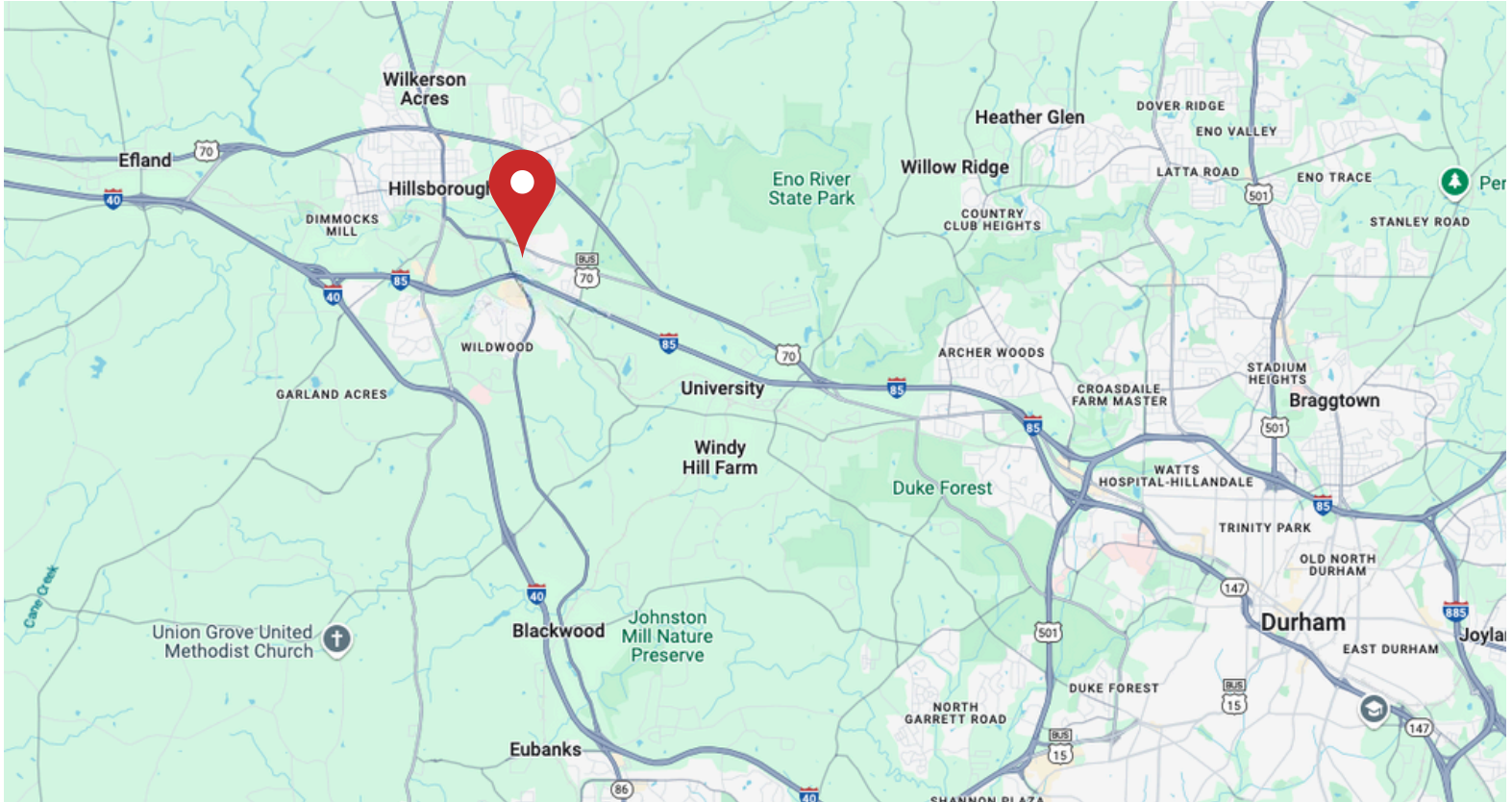
**Emilee Collins, CCIM**  
(919) 730-7040  
emilee@pickettsprouse.com

**Matthew Morton**  
(919) 864-0864  
matthew@pickettsprouse.com

# Floor Plan



# 960 CORPORATE DRIVE, STE 101, HILLSBOROUGH, NC, 27278



**Emilee Collins, CCIM**  
(919) 730-7040  
emilee@pickettsprouse.com

**Matthew Morton**  
(919) 864-0864  
matthew@pickettsprouse.com