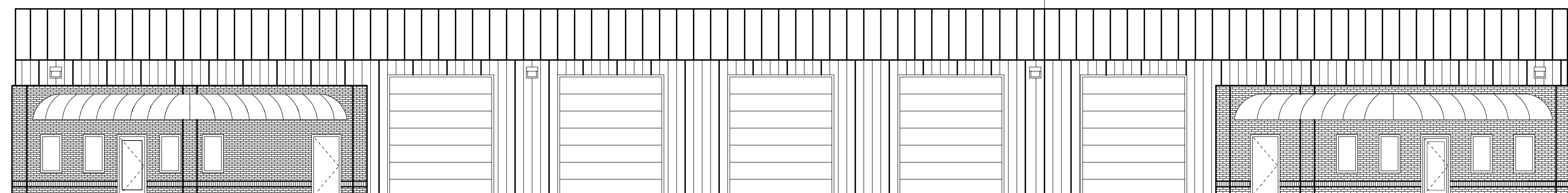


**1 FLOOR PLAN**  
SCALE: 1/8" = 1'-0"

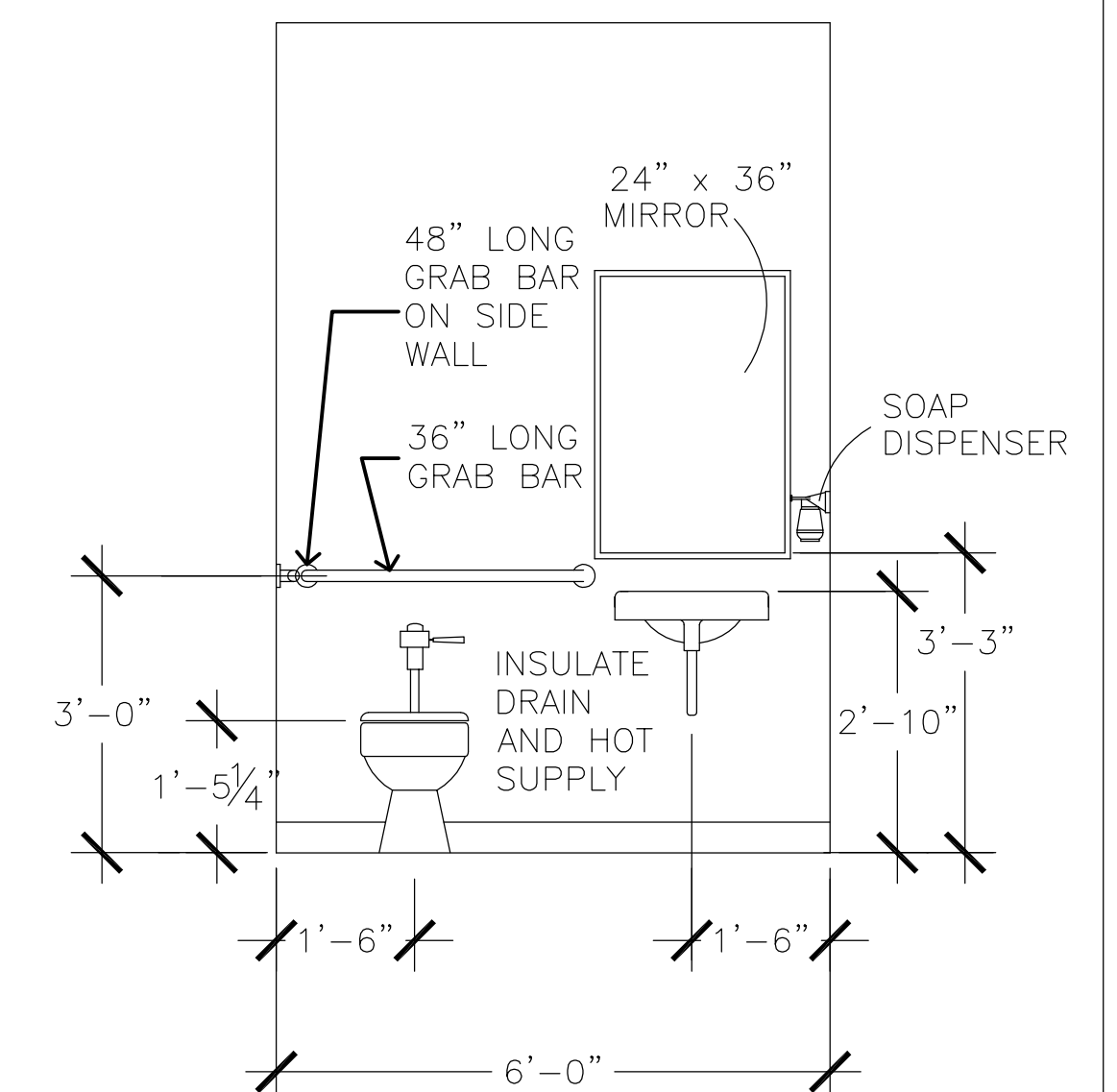


**2 EXTERIOR ELEVATION - FRONT**  
SCALE: 1/8" = 1'-0"

FINISH SCHEDULE					
NOTE: WAREHOUSE SPACE FINISHES ARE METAL BUILDING MANUFACTURER'S STANDARD FINISHES. INSULATION IN WALLS, EXPOSED UNDERSIDE OF ROOF PANELS, ETC.					
ROOM NAME	FLOOR	WALL BASE	WALL MATERIAL	WALLS	CEILING
RECEPTION OFFICE	CPT-1	RWB-1	GWB-1	PT-1	ACT-1
CORRIDOR	VCT-1	RWB-1	GWB-1	PT-1	ACT-1
OFFICE	CPT-1	RWB-1	GWB-1	PT-1	ACT-1
MEN'S & WOMEN'S TOILET	VCT-1	RWB-1	GWB-2	PT-2	ACT-1
WAREHOUSE / STORAGE	C-1	N/A	N/A	N/A	N/A

**FINISH LEGEND - ABBREVIATIONS**

- FLOORING**  
 CPT-1 CARPET  
 VCT-1 12" X 12" VINYL TILE
- WALL BASE**  
 RWB-1 RUBBER WALL BASE
- WALL MATERIAL**  
 GWB-1 5/8" GYPSUM BOARD  
 GWB-2 5/8" MOISTURE RESIST. GYPSUM BOARD
- WALL FINISH**  
 PT-1 INTERIOR LATEX PAINT  
 PT-2 MOISTURE RESIST. PAINT
- CEILING**  
 ACT-1 2'x2' ACOUSTICAL CEILING TILE AND GRID SUSPENSION SYSTEM



**A TYPICAL TOILET ELEVATION**  
SCALE: 1/2" = 1'-0"

**FLEX OFFICE /  
WAREHOUSE BUILDING  
510 CORNERSTONE COURT  
HILLSBOROUGH, NORTH CAROLINA**

**FLOOR PLAN, EXTERIOR  
ELEVATION, FINISH LEGEND  
AND SCHEDULE  
TYPICAL TOILET ELEVATION**

DATE:	DRAWN BY:
REVISIONS:	CHECKED:
	APPROVED:
SCALE:	JOB NO.
SHEET NO.	

**A1.1**  
of