

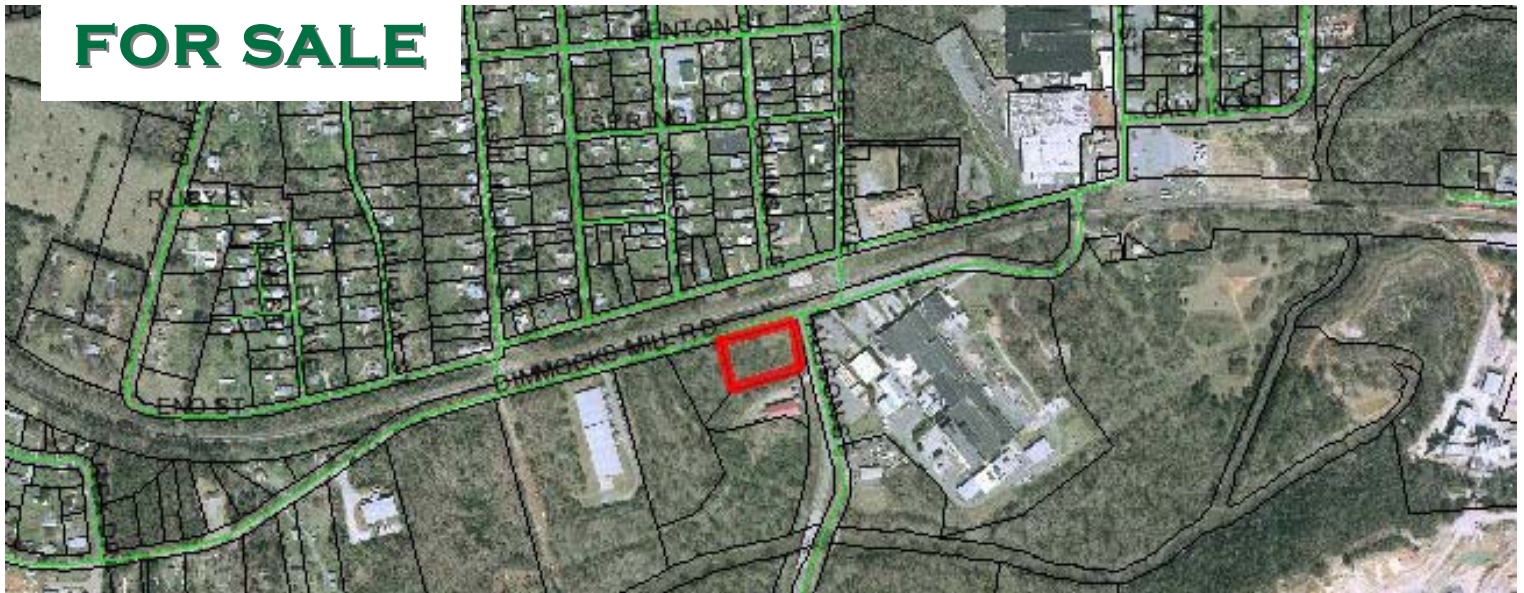
Pickett-Sprouse

REAL ESTATE

919.493.0395

PICKETT-SPROUSE.COM

FOR SALE



± 1.24 ACRES INDUSTRIAL LAND

Dimmocks Mill Road & Allison Street, Hillsborough, NC

DIRECTIONS: From I-85 (Exit 164), take Churton Street north to left on Orange Grove Road (southwest) one mile. Right onto Eno Mountain Road (becomes Allison Street). Cross Eno River, tract is on left at stop sign.

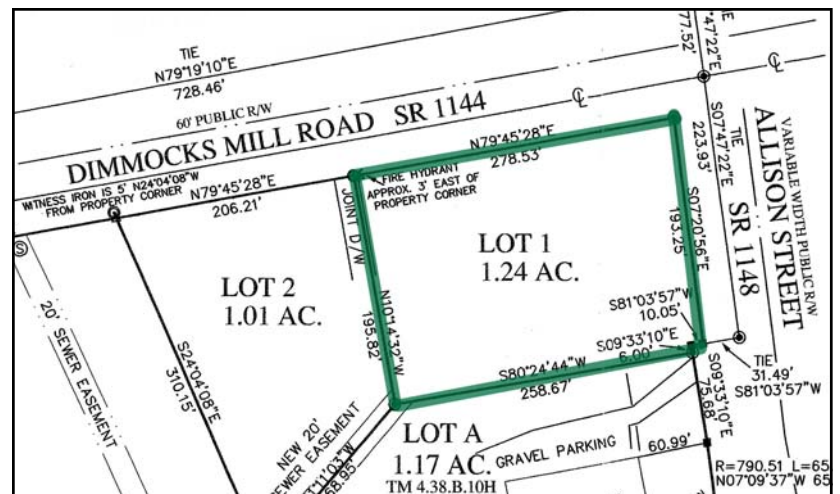
SITE: Mostly wooded with slight slope.

ZONING: General Industrial

BEST USE: Warehouse, Flex, Outside Storage, Manufacturing.

UTILITIES: Water and sewer on site, natural gas nearby

PRICE: \$110,000



Please contact:

GREG PAYNE, CCIM

greg@pickett-sprouse.com

MARK O'NEAL, CCIM

marko@pickett-sprouse.com

(919)493-0395

Visit us at pickett-sprouse.com