

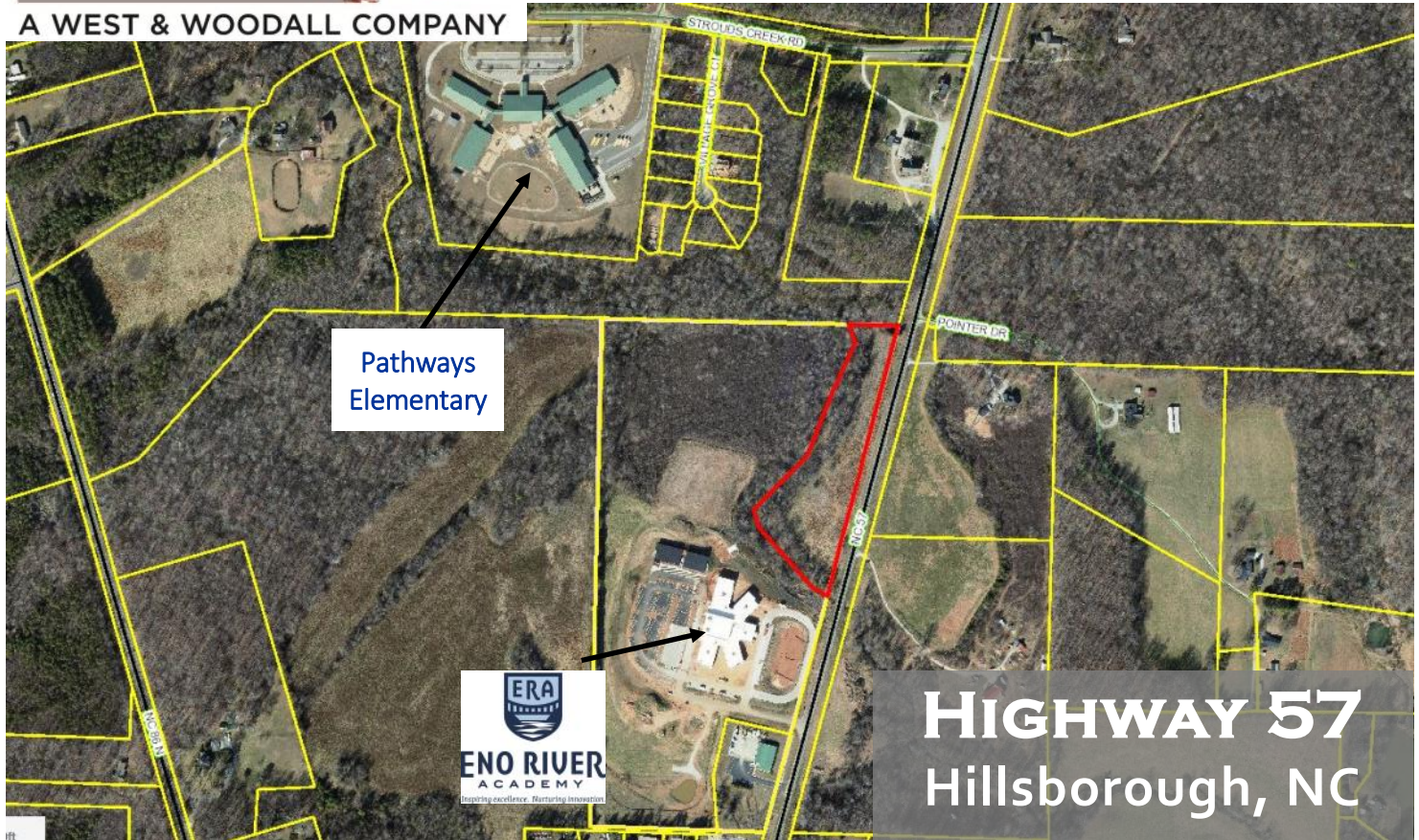
PICKETT  
SPROUSE

COMMERCIAL  
REAL ESTATE



# COMMERCIAL LAND FOR SALE

A WEST & WOODALL COMPANY



**HIGHWAY 57**  
Hillsborough, NC

DESCRIPTION	5.44 acres with onsite access to Hillsborough water & sewer. Rough graded. Creek & sewer line limit full use of the tract.
ZONING	Business Park District (BP) allows light industrial, distribution, flex, office & services. Daycare & schools also allowed.
LEGAL	PIN No. 9875-07-5617 Plat Book 104, page 58 Deed Book 5654, page 388
PRICE	<b>\$275,000</b>

Please contact: **Mark O'Neal, CCIM**

mark.oneal@westandwoodall.com | 919-287-3051

Please contact: **Emilee Collins**

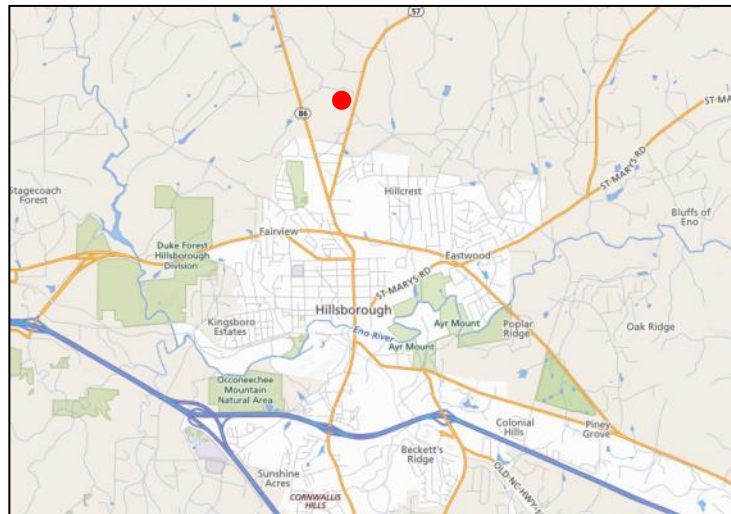
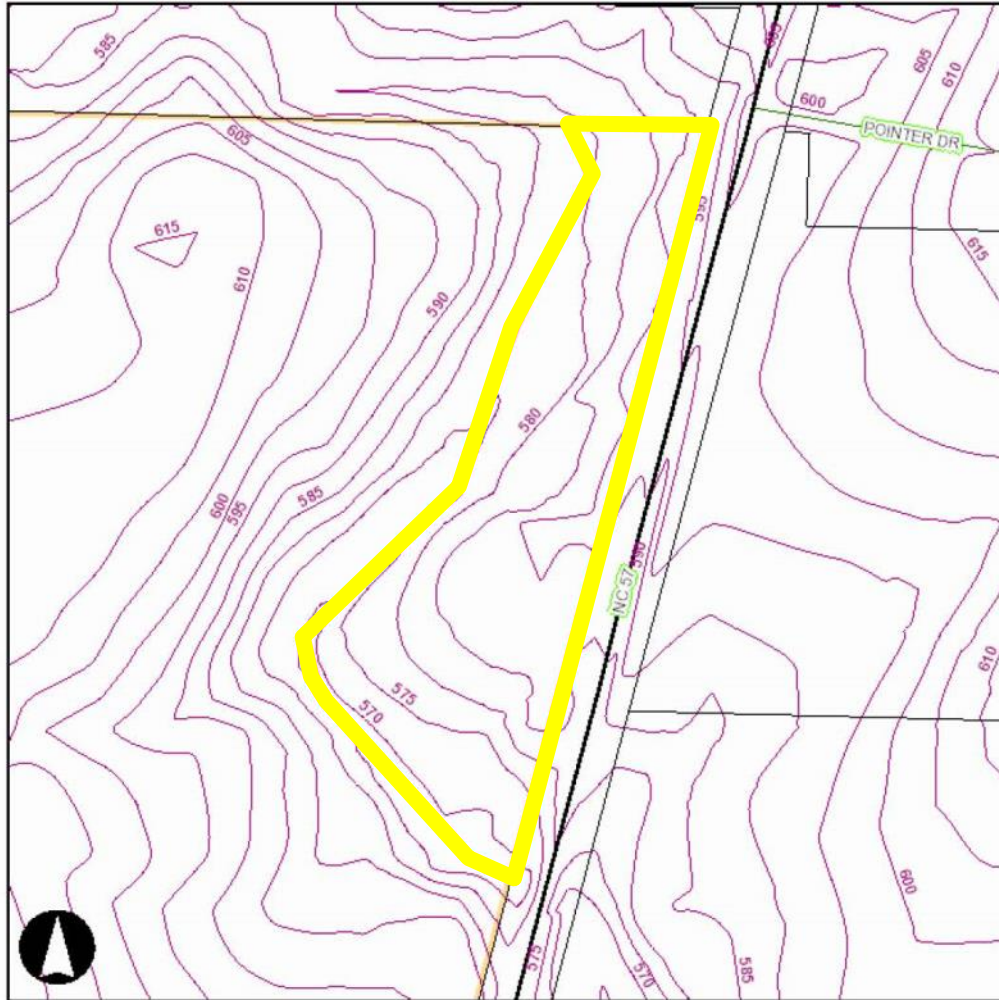
emilee@westandwoodall.com | 919-730-7040

Visit us at [pickettsprouse.com](http://pickettsprouse.com)

INFORMATION HEREIN IS SUBJECT TO VERIFICATION BY ALL PARTIES AND MAY CHANGE WITHOUT NOTICE.  
1901 HILLDALE ROAD, SUITE 100 • DURHAM, NC 27705 • [WWW.PICKETTSPROUSE.COM](http://WWW.PICKETTSPROUSE.COM)



# Highway 57 - Hillsborough, NC TOPOGRAPHIC MAP



**919-287-3051**

**MARK O'NEAL, CCIM**

mark.oneal@westandwoodall.com

**919-730-7040**

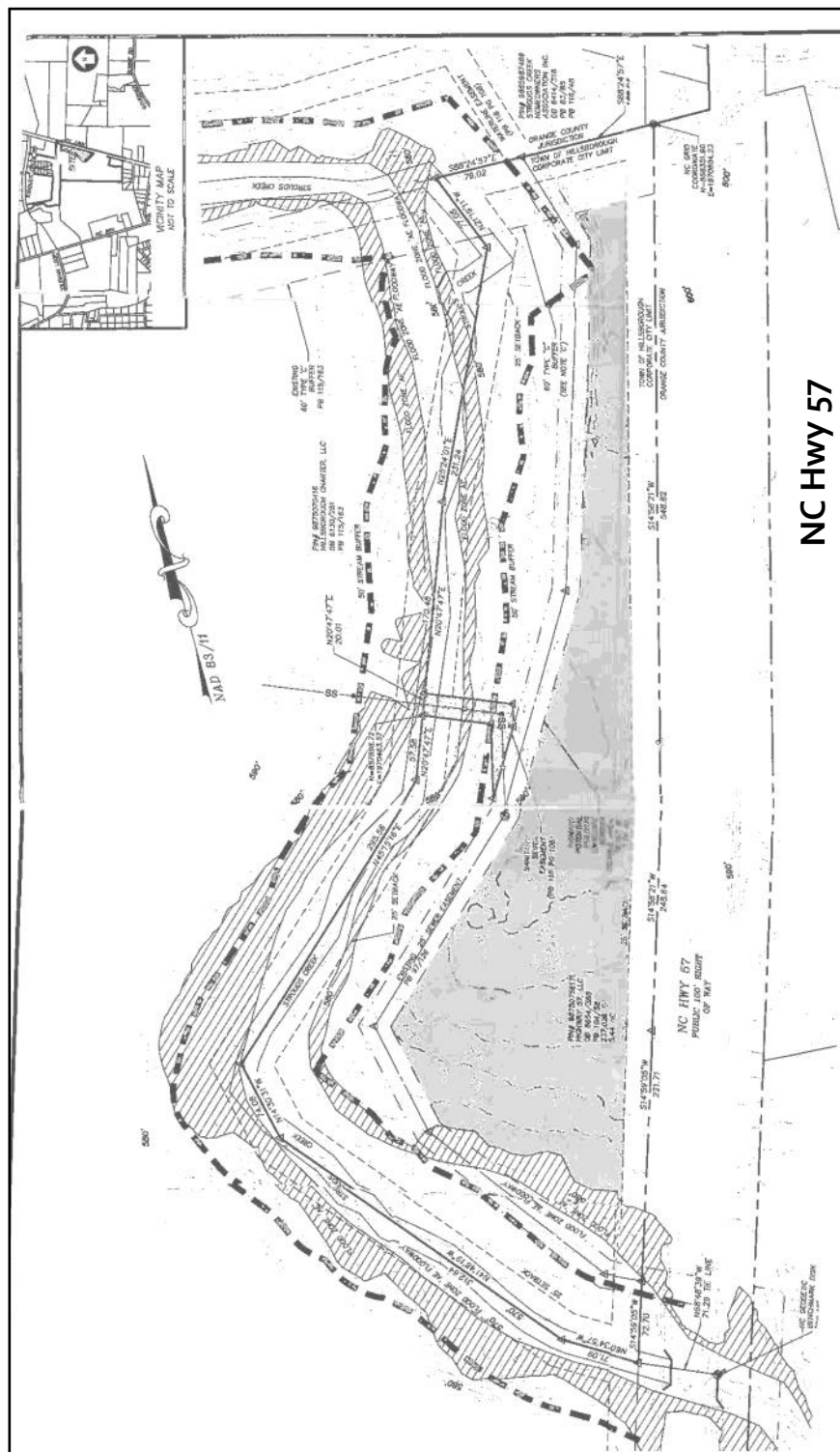
**EMILEE COLLINS**

emilee@westandwoodall.com



# Highway 57 - Hillsborough, NC

PLAT



919-287-3051

MARK O'NEAL, CCIM

mark.oneal@westandwoodall.com

919-730-7040

EMILEE COLLINS

emilee@westandwoodall.com