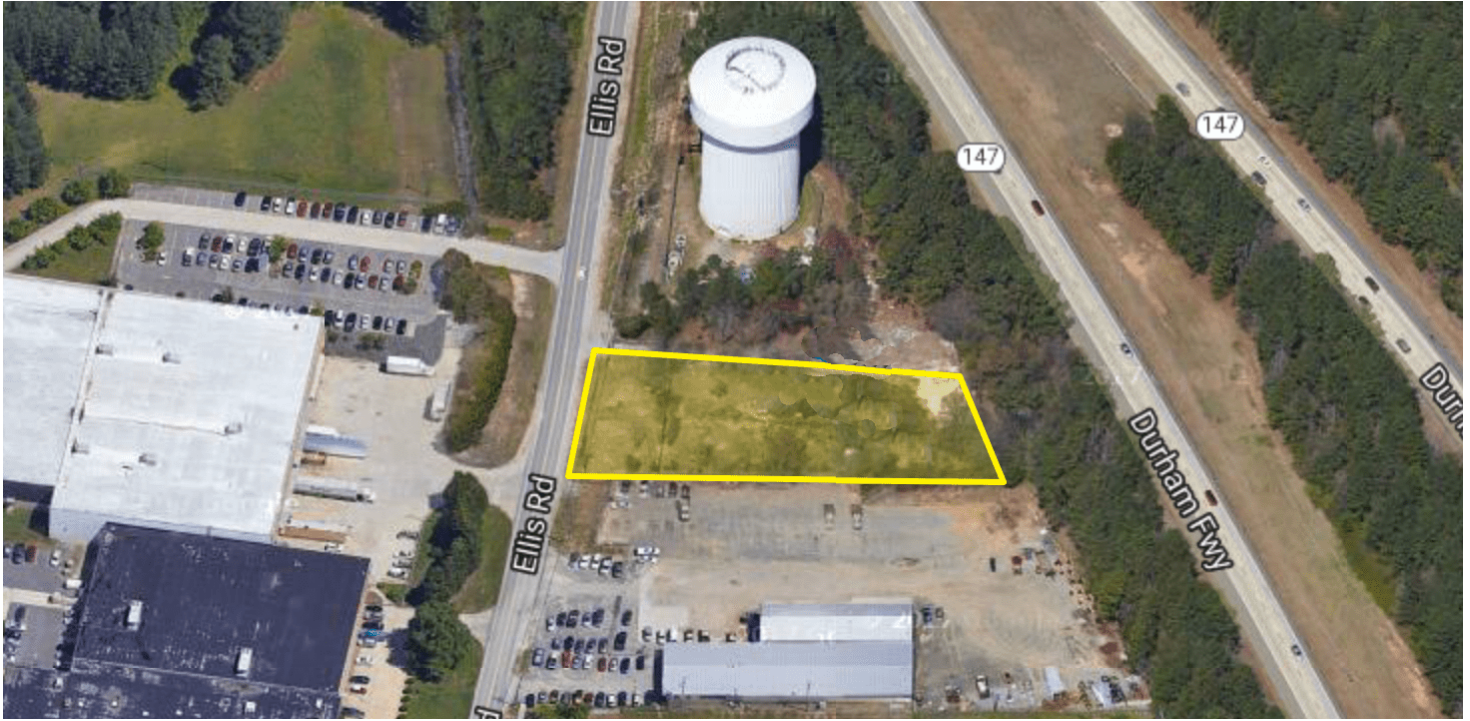


Durham, NC 27703

803 Ellis Rd

FOR SALE

EXECUTIVE SUMMARY



PROPERTY OVERVIEW

Real Estate Associates is pleased to offer for sale this ± 0.689 acre tract located just off of the Durham Freeway. This industrial-zoned parcel is a great opportunity for an industrial user ready to build with convenient access to major highways including NC-147, I-40 and the new East End Connector to US-70. City water and sewer available.

LOCATION OVERVIEW

Located on Ellis Road with close proximity to the Durham Freeway, I-40, NC-147, East End Connector to US-70, Durham Technical Community College, Research Triangle Park and North Carolina Central University.

OFFERING SUMMARY

Sale Price:	\$89,500
Parcel ID:	156780
Lot Size:	± 0.689 Acres
Zoning:	IL (Light Industrial)

CHARLES "SANDY" ALLEN

O: 919.287.2124

C: 919.602.8891

callen@realestateassoc.com

LISA SHANAHAN

O: 919.287.2134

C: 919.949.2228

lshanahan@realestateassoc.com



3333 DURHAM-CHAPEL HILL BLVD, SUITE C, DURHAM, NC 27707 | REALESTATEASSOC.COM | 919.489.2000

No warranty or representation, expressed or implied, is made to the accuracy of the information contained herein, and same is submitted subject to errors, omissions, change of price, rental, or other conditions, withdrawal without notice, and to any special listing conditions imposed by principals.

Durham, NC 27703

803 Ellis Rd

FOR SALE

AERIAL MAP



CHARLES "SANDY" ALLEN

O: 919.287.2124

C: 919.602.8891

callen@realestateassoc.com

LISA SHANAHAN

O: 919.287.2134

C: 919.949.2228

lshanahan@realestateassoc.com



3333 DURHAM-CHAPEL HILL BLVD, SUITE C, DURHAM, NC 27707 | REALESTATEASSOC.COM | 919.489.2000

No warranty or representation, expressed or implied, is made to the accuracy of the information contained herein, and same is submitted subject to errors, omissions, change of price, rental, or other conditions, withdrawal without notice, and to any special listing conditions imposed by principals.