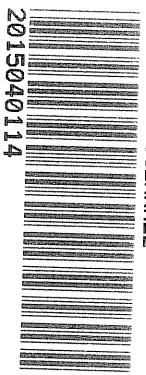


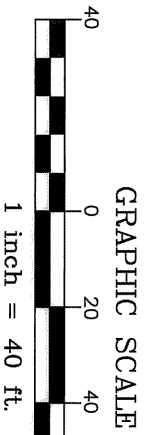
- SEE SHEET 1 OF 2 FOR GENERAL NOTES.
- THIS SHEET SHOWS THE PUBLIC SANITARY R/W DEDICATION AND THE PRIVATE SCM EASEMENT ONLY. SEE SHEET 1 OF 2 FOR PUBLIC R/W, PRIVATE ACCESS EASEMENT AND PUBLIC SIGNAL POLE EASEMENT DEDICATION.

GENERAL NOTES



FOR REGISTRATION
 WILLIE L. COWINGTON
 REGISTERED SURVEYOR
 DURHAM COUNTY, DEEDS
 2015, DEC. 03, 01:57:11 PM
 BK-195, PG-181-181
 FEE: \$21.00
 INSTRUMENT # 2015040114
 SCARNEL

2015040114



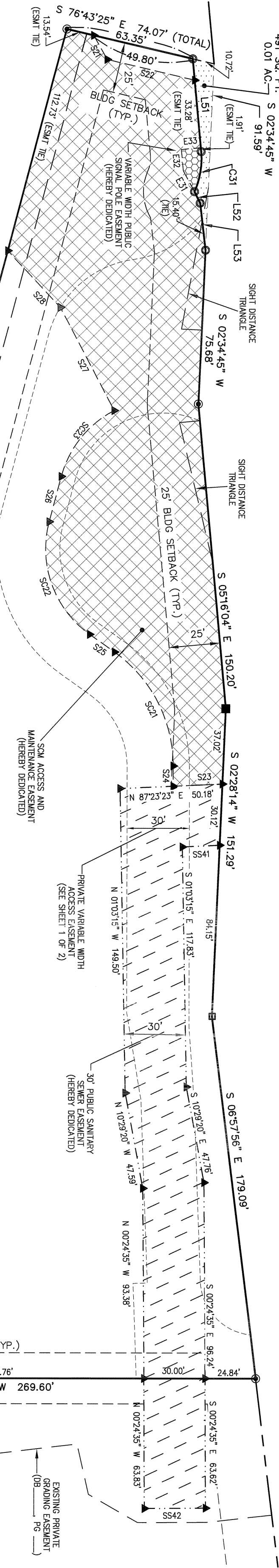
N/F
 UNITED STATES OF AMERICA
 UNITED STATES ATTORNEY
 PIN# 0718-03-05-4712
 DB 933, PG 467

REVELLE LLC.
 PIN# 0718-01-15-5265
 PB 156, PG 239
 DB 3287, PG 143
 LOT 26 THE PARK AT SOUTHPOINT
 SUBDIVISION
 OLD AREA: 107,094 SQ. FT. 2.46 AC.
 NEW AREA: 106,603 SQ. FT. 2.45 AC.

N/F
 REVELLE LLC.
 PIN# 0718-03-14-3464
 PB 156, PG 239
 DB 3287, PG 143
 LOT 27 THE PARK AT SOUTHPOINT SUBDIVISION

DURHAM FILE
 # S1500186

SHEET 2 OF 2



NC HWY 751
 VARIABLE WIDTH PUBLIC R/W
 (PB 156, PG 239)

PARCEL AREA TABLE

TRACT	TOTAL (ORIGINAL) AREA	SQ. FT.	ACRES
LOT 26	107,094	2.46	
NC HWY 751 R/W DEDICATION	491	0.01	
LOT 26 (REMAINING)	106,603	2.45	

Plat Book _____ Page _____
 Date _____ Time _____
 WILLIE L. COWINGTON
 REGISTER OF DEEDS
 DURHAM COUNTY, NC

FILED

PROPERTY LINE CURVE TABLE

CURVE	RADIUS	ARC LENGTH	CHORD BEARING	CHORD LENGTH
C31	40.00'	20.15'	N 09°30'19" E	19.94'

ACCESS ESM'T. CURVE TABLE

CURVE	RADIUS	ARC LENGTH	CHORD BEARING	CHORD LENGTH
AC1	44.50'	76.96'	S 64°25'24" W	67.72'
AC2	44.50'	54.01'	S 19°53'34" E	50.76'
AC3	75.50'	72.09'	S 27°18'38" E	69.38'
AC4	27.50'	39.35'	S 43°01'23" E	36.08'
AC5	44.00'	41.98'	N 27°19'58" W	40.41'
AC6	75.50'	91.64'	N 19°53'34" W	86.12'
AC7	50.50'	59.92'	N 48°52'25" E	56.47'
AC8	50.00'	38.98'	N 58°44'27" E	38.00'
AC9	27.50'	42.42'	S 42°09'16" W	38.33'

PROPERTY LINE CURVE TABLE

CURVE	RADIUS	ARC LENGTH	CHORD BEARING	CHORD LENGTH
SC21	68.50'	65.36'	N 27°19'58" W	62.90'
SC22	51.50'	62.51'	N 19°53'34" W	58.74'
SC23	51.50'	42.69'	N 38°37'33" E	41.48'

PROPERTY LINE LINE TABLE

LINE	BEARING	DISTANCE
L51	S 05°11'48" E	45.74'
L52	S 28°09'30" E	6.29'
L53	S 08°39'06" E	23.25'

SANITARY SEWER ESM'T. LINE TABLE

LINE	BEARING	DISTANCE
SS41	S 87°23'23" W	18.32'
SS42	S 89°35'25" W	30.00'

SIGNAL POLE ESM'T. LINE TABLE

LINE	BEARING	DISTANCE
E31	N 28°18'47" W	11.58'
E32	N 05°22'27" W	10.53'
E33	N 84°37'33" E	9.64'

STORMWATER ACCESS ESM'T. LINE TABLE

LINE	BEARING	DISTANCE
S21	S 29°07'44" E	13.54'
S22	S 76°33'25" E	44.01'
S23	S 87°23'23" W	24.16'
S24	N 00°00'00" W	9.93'
S25	N 54°39'56" W	14.95'
S26	N 14°52'47" E	23.05'
S27	N 27°37'41" W	57.16'
S28	N 42°52'38" W	37.93'

- LEGEND**
- EXISTING IRON PIPE
 - EXISTING CONCRETE MONUMENT
 - IRON PIPE SET
 - CALCULATED POINT
 - SCM
 - STORM CONTROL MEASURE
 - STORM CONTROL MEASURE (SCM) ACCESS AND MAINTENANCE EASEMENT HATCH
 - PUBLIC R/W DEDICATION HATCH
 - PUBLIC SANITARY SEWER EASEMENT HATCH
 - PUBLIC SIGNAL POLE EASEMENT HATCH

I HEREBY CERTIFY THAT THIS PLAT IS OF THE FOLLOWING TYPE:
 G.S. 47-36 (11)(a). THIS SURVEY CREATES SUBDIVISION OF LAND WITHIN THE AREA OF A COUNTY OR MUNICIPALITY THAT HAS AN ORDINANCE THAT REGULATES PARCELS OF LAND.

ERIC M. MAMTURIK PLS L-5019

SHEETZ - DURHAM AUTOPARK
LOTS 26 & 27 PARK AT SOUTHPOINT
 TRIANGLE TOWNSHIP, DURHAM COUNTY, NORTH CAROLINA

FINAL PLAT

5700 SIXTH AVENUE
 ALTOONA, PA 16002

REVISIONS:
 2015-09-29 TOWN COMMENTS

THE JOHN R. McADAMS COMPANY, INC.
 2905 Meridian Parkway
 Durham, North Carolina 27713
 License No.: C-0293
 (800) 733-5646 • McAdamsCo.com

McADAMS

PROJECT NO. SHZ-13000
 FILENAME: SHZ13000-F1
 SURVEYOR: EMM
 DRAWN BY: EMM
 SCALE: 1"=40'
 DATE: 2015-07-21

McADAMS