

CERTIFICATE OF OWNER
 THE UNDERSIGNED OWNER OF THE PROPERTY LYING WITHIN THE ATTACHED PLAT AND SUBDIVISION HEREBY CERTIFIES THAT THE PLATTING TO BE DONE, AND THAT ALL PUBLIC UTILITIES, ALLEYS, EASEMENTS, AND OTHER OPEN SPACES SO DESIGNATED UPON SAID PLAT ARE HEREBY DEDICATED FOR SUCH USES, AND THAT ALL PUBLIC UTILITIES, ALLEYS, AND OTHER OPEN SPACES SO DESIGNATED UPON SAID PLAT ARE HEREBY GRANTED FOR THE USES STIPULATED.

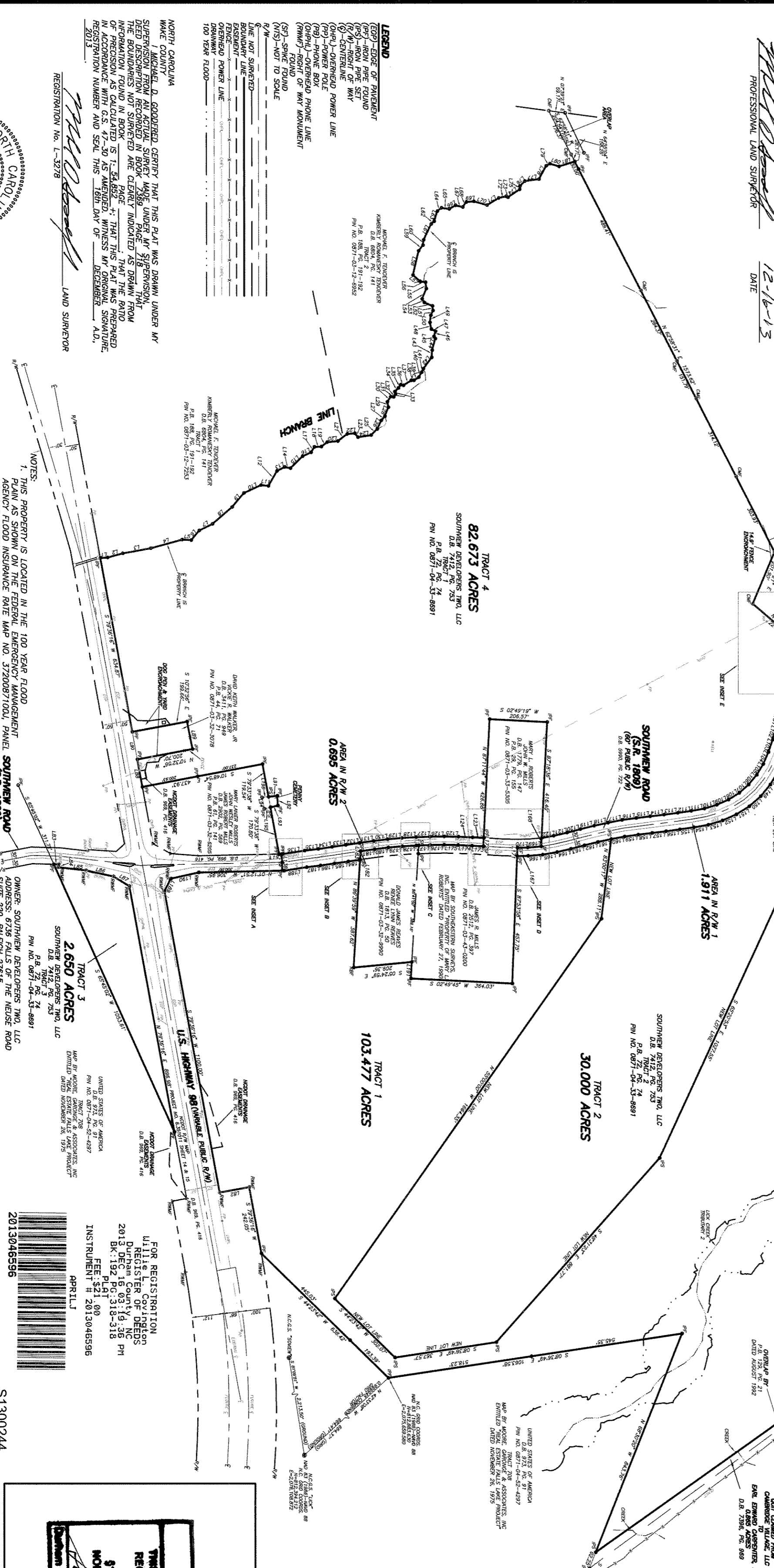
OWNER: *Michael D. Godfred* (SEAL)

STATE OF NORTH CAROLINA
 COUNTY OF DURHAM
 I, **DARRELL ALLEN**, REVIEW OFFICER OF DURHAM COUNTY, CERTIFY THAT THE MAP OR PLAT TO WHICH THIS CERTIFICATION IS AFFIXED MEETS ALL STATUTORY REQUIREMENTS FOR RECORDING.

REVIEW OFFICER: *Darrell Allen*
 DATE: 12/16/2013

THIS SURVEY IS OF ANOTHER CATEGORY, SUCH AS THE RECOMBINATION OF EXISTING PARCELS, A COURT-ORDERED SURVEY, OR OTHER EXCEPTION TO THE DEFINITION OF SUBDIVISION.

PROFESSIONAL LAND SURVEYOR: *Michael D. Godfred*
 DATE: 12-16-13



LINE TABLE

LINE	BEARING	DISTANCE	LINE	BEARING	DISTANCE
1	N 0° 00' 00" E	0.00	101	N 89° 59' 59" W	0.00
2	N 0° 00' 00" E	0.00	102	N 89° 59' 59" W	0.00
3	N 0° 00' 00" E	0.00	103	N 89° 59' 59" W	0.00
4	N 0° 00' 00" E	0.00	104	N 89° 59' 59" W	0.00
5	N 0° 00' 00" E	0.00	105	N 89° 59' 59" W	0.00
6	N 0° 00' 00" E	0.00	106	N 89° 59' 59" W	0.00
7	N 0° 00' 00" E	0.00	107	N 89° 59' 59" W	0.00
8	N 0° 00' 00" E	0.00	108	N 89° 59' 59" W	0.00
9	N 0° 00' 00" E	0.00	109	N 89° 59' 59" W	0.00
10	N 0° 00' 00" E	0.00	110	N 89° 59' 59" W	0.00
11	N 0° 00' 00" E	0.00	111	N 89° 59' 59" W	0.00
12	N 0° 00' 00" E	0.00	112	N 89° 59' 59" W	0.00
13	N 0° 00' 00" E	0.00	113	N 89° 59' 59" W	0.00
14	N 0° 00' 00" E	0.00	114	N 89° 59' 59" W	0.00
15	N 0° 00' 00" E	0.00	115	N 89° 59' 59" W	0.00
16	N 0° 00' 00" E	0.00	116	N 89° 59' 59" W	0.00
17	N 0° 00' 00" E	0.00	117	N 89° 59' 59" W	0.00
18	N 0° 00' 00" E	0.00	118	N 89° 59' 59" W	0.00
19	N 0° 00' 00" E	0.00	119	N 89° 59' 59" W	0.00
20	N 0° 00' 00" E	0.00	120	N 89° 59' 59" W	0.00
21	N 0° 00' 00" E	0.00	121	N 89° 59' 59" W	0.00
22	N 0° 00' 00" E	0.00	122	N 89° 59' 59" W	0.00
23	N 0° 00' 00" E	0.00	123	N 89° 59' 59" W	0.00
24	N 0° 00' 00" E	0.00	124	N 89° 59' 59" W	0.00
25	N 0° 00' 00" E	0.00	125	N 89° 59' 59" W	0.00
26	N 0° 00' 00" E	0.00	126	N 89° 59' 59" W	0.00
27	N 0° 00' 00" E	0.00	127	N 89° 59' 59" W	0.00
28	N 0° 00' 00" E	0.00	128	N 89° 59' 59" W	0.00
29	N 0° 00' 00" E	0.00	129	N 89° 59' 59" W	0.00
30	N 0° 00' 00" E	0.00	130	N 89° 59' 59" W	0.00
31	N 0° 00' 00" E	0.00	131	N 89° 59' 59" W	0.00
32	N 0° 00' 00" E	0.00	132	N 89° 59' 59" W	0.00
33	N 0° 00' 00" E	0.00	133	N 89° 59' 59" W	0.00
34	N 0° 00' 00" E	0.00	134	N 89° 59' 59" W	0.00
35	N 0° 00' 00" E	0.00	135	N 89° 59' 59" W	0.00
36	N 0° 00' 00" E	0.00	136	N 89° 59' 59" W	0.00
37	N 0° 00' 00" E	0.00	137	N 89° 59' 59" W	0.00
38	N 0° 00' 00" E	0.00	138	N 89° 59' 59" W	0.00
39	N 0° 00' 00" E	0.00	139	N 89° 59' 59" W	0.00
40	N 0° 00' 00" E	0.00	140	N 89° 59' 59" W	0.00
41	N 0° 00' 00" E	0.00	141	N 89° 59' 59" W	0.00
42	N 0° 00' 00" E	0.00	142	N 89° 59' 59" W	0.00
43	N 0° 00' 00" E	0.00	143	N 89° 59' 59" W	0.00
44	N 0° 00' 00" E	0.00	144	N 89° 59' 59" W	0.00
45	N 0° 00' 00" E	0.00	145	N 89° 59' 59" W	0.00
46	N 0° 00' 00" E	0.00	146	N 89° 59' 59" W	0.00
47	N 0° 00' 00" E	0.00	147	N 89° 59' 59" W	0.00
48	N 0° 00' 00" E	0.00	148	N 89° 59' 59" W	0.00
49	N 0° 00' 00" E	0.00	149	N 89° 59' 59" W	0.00
50	N 0° 00' 00" E	0.00	150	N 89° 59' 59" W	0.00
51	N 0° 00' 00" E	0.00	151	N 89° 59' 59" W	0.00
52	N 0° 00' 00" E	0.00	152	N 89° 59' 59" W	0.00
53	N 0° 00' 00" E	0.00	153	N 89° 59' 59" W	0.00
54	N 0° 00' 00" E	0.00	154	N 89° 59' 59" W	0.00
55	N 0° 00' 00" E	0.00	155	N 89° 59' 59" W	0.00
56	N 0° 00' 00" E	0.00	156	N 89° 59' 59" W	0.00
57	N 0° 00' 00" E	0.00	157	N 89° 59' 59" W	0.00
58	N 0° 00' 00" E	0.00	158	N 89° 59' 59" W	0.00
59	N 0° 00' 00" E	0.00	159	N 89° 59' 59" W	0.00
60	N 0° 00' 00" E	0.00	160	N 89° 59' 59" W	0.00
61	N 0° 00' 00" E	0.00	161	N 89° 59' 59" W	0.00
62	N 0° 00' 00" E	0.00	162	N 89° 59' 59" W	0.00
63	N 0° 00' 00" E	0.00	163	N 89° 59' 59" W	0.00
64	N 0° 00' 00" E	0.00	164	N 89° 59' 59" W	0.00
65	N 0° 00' 00" E	0.00	165	N 89° 59' 59" W	0.00
66	N 0° 00' 00" E	0.00	166	N 89° 59' 59" W	0.00
67	N 0° 00' 00" E	0.00	167	N 89° 59' 59" W	0.00
68	N 0° 00' 00" E	0.00	168	N 89° 59' 59" W	0.00
69	N 0° 00' 00" E	0.00	169	N 89° 59' 59" W	0.00
70	N 0° 00' 00" E	0.00	170	N 89° 59' 59" W	0.00
71	N 0° 00' 00" E	0.00	171	N 89° 59' 59" W	0.00
72	N 0° 00' 00" E	0.00	172	N 89° 59' 59" W	0.00
73	N 0° 00' 00" E	0.00	173	N 89° 59' 59" W	0.00
74	N 0° 00' 00" E	0.00	174	N 89° 59' 59" W	0.00
75	N 0° 00' 00" E	0.00	175	N 89° 59' 59" W	0.00
76	N 0° 00' 00" E	0.00	176	N 89° 59' 59" W	0.00
77	N 0° 00' 00" E	0.00	177	N 89° 59' 59" W	0.00
78	N 0° 00' 00" E	0.00	178	N 89° 59' 59" W	0.00
79	N 0° 00' 00" E	0.00	179	N 89° 59' 59" W	0.00
80	N 0° 00' 00" E	0.00	180	N 89° 59' 59" W	0.00
81	N 0° 00' 00" E	0.00	181	N 89° 59' 59" W	0.00
82	N 0° 00' 00" E	0.00	182	N 89° 59' 59" W	0.00
83	N 0° 00' 00" E	0.00	183	N 89° 59' 59" W	0.00
84	N 0° 00' 00" E	0.00	184	N 89° 59' 59" W	0.00
85	N 0° 00' 00" E	0.00	185	N 89° 59' 59" W	0.00
86	N 0° 00' 00" E	0.00	186	N 89° 59' 59" W	0.00
87	N 0° 00' 00" E	0.00	187	N 89° 59' 59" W	0.00
88	N 0° 00' 00" E	0.00	188	N 89° 59' 59" W	0.00
89	N 0° 00' 00" E	0.00	189	N 89° 59' 59" W	0.00
90	N 0° 00' 00" E	0.00	190	N 89° 59' 59" W	0.00
91	N 0° 00' 00" E	0.00	191	N 89° 59' 59" W	0.00
92	N 0° 00' 00" E	0.00	192	N 89° 59' 59" W	0.00
93	N 0° 00' 00" E	0.00	193	N 89° 59' 59" W	0.00
94	N 0° 00' 00" E	0.00	194	N 89° 59' 59" W	0.00
95	N 0° 00' 00" E	0.00	195	N 89° 59' 59" W	0.00
96	N 0° 00' 00" E	0.00	196	N 89° 59' 59" W	0.00
97	N 0° 00' 00" E	0.00	197	N 89° 59' 59" W	0.00
98	N 0° 00' 00" E	0.00	198	N 89° 59' 59" W	0.00
99	N 0° 00' 00" E	0.00	199	N 89° 59' 59" W	0.00
100	N 0° 00' 00" E	0.00	200	N 89° 59' 59" W	0.00



LEGEND

- (G) - EDGE OF PAVEMENT
- (R) - RIGHT OF WAY
- (M) - RIGHT OF WAY
- (P) - POWER POLE
- (C) - CONCRETE PHONE LINE
- (W) - WIRE FOUND
- (S) - SPRING FOUND
- (D) - DITCH TO SCALE
- (L) - LINE NOT SURVEYED
- (E) - EASEMENT
- (F) - FENCE
- (O) - OPEN DRAINAGE
- (100) - 100 YEAR FLOOD

NOTES:

- THIS PROPERTY IS LOCATED IN THE 100 YEAR FLOOD PLAIN AS SHOWN ON THE FEDERAL EMERGENCY MANAGEMENT AGENCY FLOOD INSURANCE RATE MAP AND SZYDORITZKI PANEL, SOUTHWEST CORNER OF THE FEDERAL EMERGENCY MANAGEMENT AGENCY FLOOD INSURANCE RATE MAP, WHICH IS LOCATED WITHIN FLOOD ZONE AE AND X.
- MISCELLANEOUS DISTANCES DISTRIBUTED BY THE COMPASS METHOD, GROUND DISTANCES UNLESS NOTED OTHERWISE, ALL AREA CALCULATED BY COORDINATE COMPUTATION.

TRACT 1
 103,477 ACRES

TRACT 2
 30,000 ACRES

TRACT 3
 2,650 ACRES

TRACT 4
 82,673 ACRES

AREA IN R/W 1
 1,911 ACRES

AREA IN R/W 2
 0,695 ACRES

AREA IN R/W 3
 0,695 ACRES

LINE BRANCH

OWNER: SOUTHWEST DEVELOPERS TWO, LLC
 ADDRESS: 6736 FALLS OF THE WENSE ROAD, SUITE 220, RALEIGH, NC 27615

DATE: 10-29-12
SCALE: 1"=300'
SURVEYED BY: M.T.
DRAWN BY: R.M., M.B.
CHECK & CLOSURE BY: M.G.
CAD FILE: WOODENEMPT
PROJECT NO.: S1300244

FINAL EXEMPT PLAT FOR
SOUTHWEST DEVELOPERS TWO, LLC
 TOWNSHIP: GARR
 COUNTY: DURHAM
 STATE: NORTH CAROLINA

FOR REGISTRATION
 LITTLE L COVINGTON
 REGISTER OF DEEDS
 2013 DEPT 16, COM 14, 36 PH
 BK: 192 PG: 318-318
 FEE: \$121.00
 INSTRUMENT # 2013046596

APR 11

WITHERS & RAVENEL
 ENGINEERS | PLANNERS | SURVEYORS
 1111 Mackeana Drive Cary, North Carolina 27511 www.wITHERSANDRAVENEL.COM License No. C-00322
 tel: 919-460-3340 fax: 919-467-6008