

AREA DATA SUMMARY

16.7281 ACRES TOTAL
728,676 SQ. FT.

- 1.7693 ACRES PUBLIC R/W DEDICATION
77,071 SQ. FT.

- 4.1812 ACRES COMMON AREAS 1-4
182,135 SQ. FT. (INCLUDES RCA, BUFFERS, & EASEMENTS)

10.7776 ACRES 58 LOTS
469,470 SQ. FT.

VICINITY MAP (NOT TO SCALE)

I, STALEY C. SMITH, certify that this plat was drawn under my supervision from an actual survey made under my supervision, deed description recorded in: DEED BOOK 12626, PAGE 412 that boundaries not surveyed are clearly indicated as drawn from information found in Book N/A, Page N/A; that the ratio of precision as calculated is 1:10,000+; that this plat was prepared in accordance with G.S. 47-30 as amended. Witness my original signature, license number, and seal this 13TH day of MARCH, A.D., 2018.

This survey shown hereon creates a subdivision of land within the area of a county or municipality that has an ordinance that regulates parcels of land.

I, STALEY C. SMITH, certify the grid tie was shown was determined from an actual GNSS survey made under my supervision and the following information was used to perform the survey.

Class of survey A
Positional Accuracy 0.03 U.S. SURVEY FEET
Type of GPS field procedure: RTK
Dates of survey 6-5-2015
Datum/Epoch: NAD 83/2011
Published/Fixed-control use: NC CORRS "NCIL"
Geoid model: 2012
Combined grid factor(s): 0.99989536
Units: U.S. SURVEY FEET

Professional Seal
NORTH CAROLINA PROFESSIONAL LAND SURVEYOR
SEAL L-3766
STALEY C. SMITH
Professional Land Surveyor
L-3766
License Number

MAKE COUNTY, NC 127
CHARLES P. GILLIAM
REGISTER OF DEEDS
PRESENTED & RECORDED ON
07/13/2018 15:30:50 NORTH CAROLINA II, L.P.
D.B. 12626, PG. 412
B.M. 2009, PG. 821
BOOK: BM2018 PAGE: 01370

LINE DATA TABLE

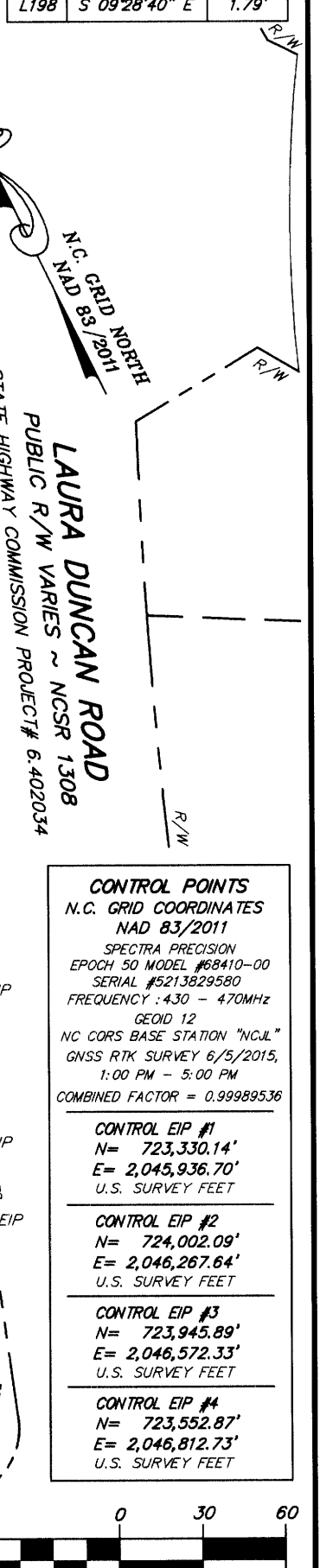
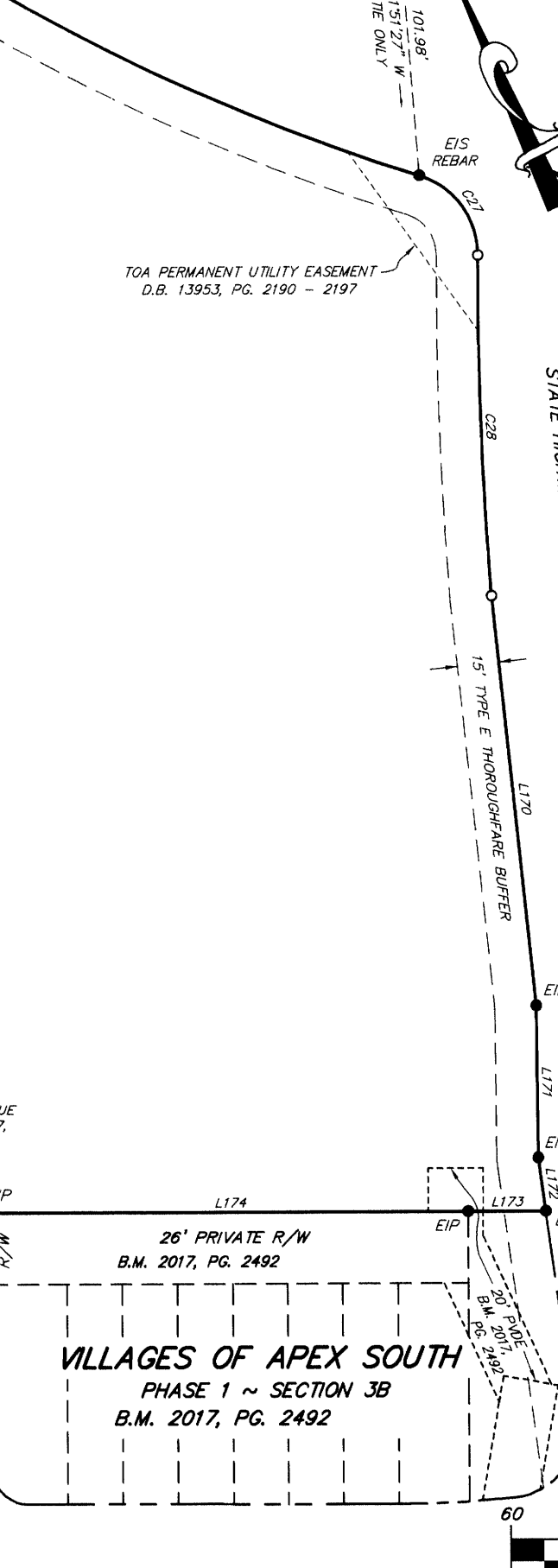
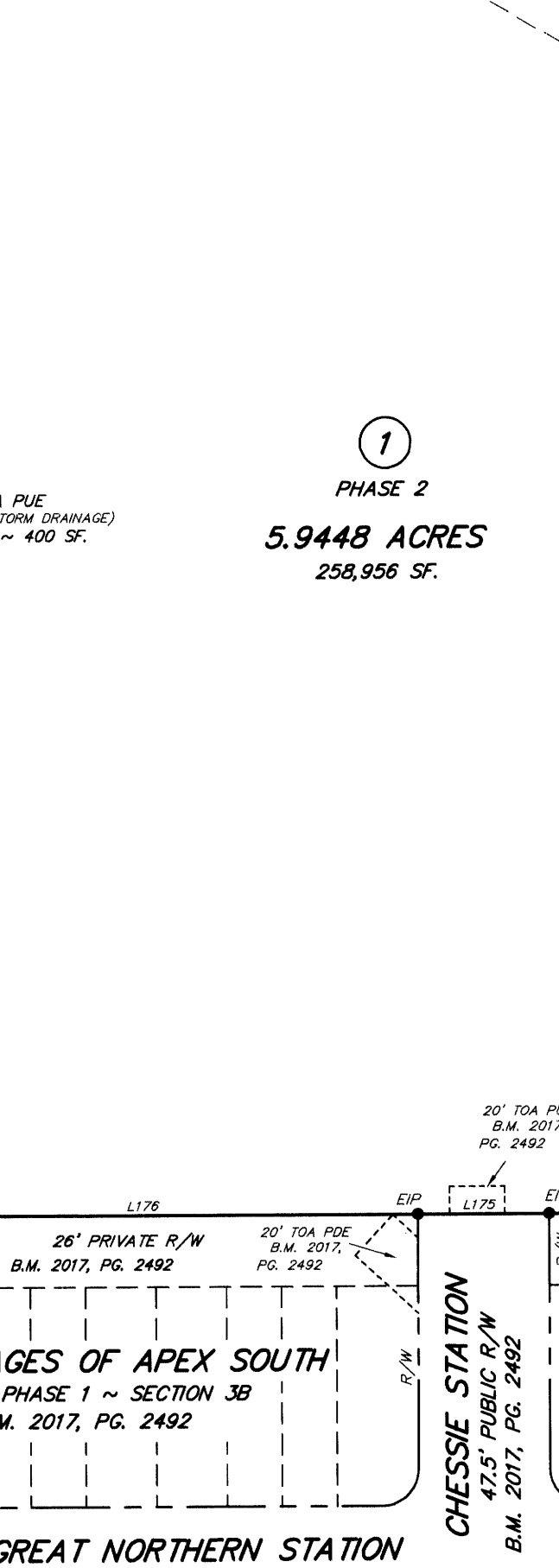
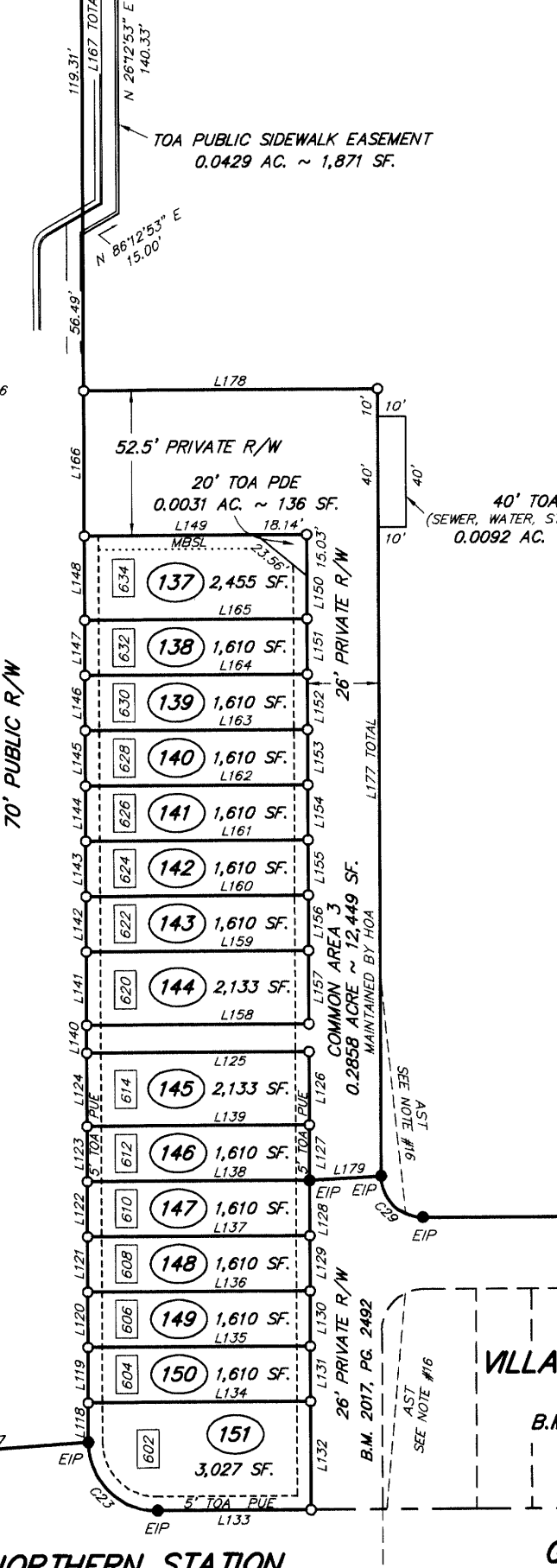
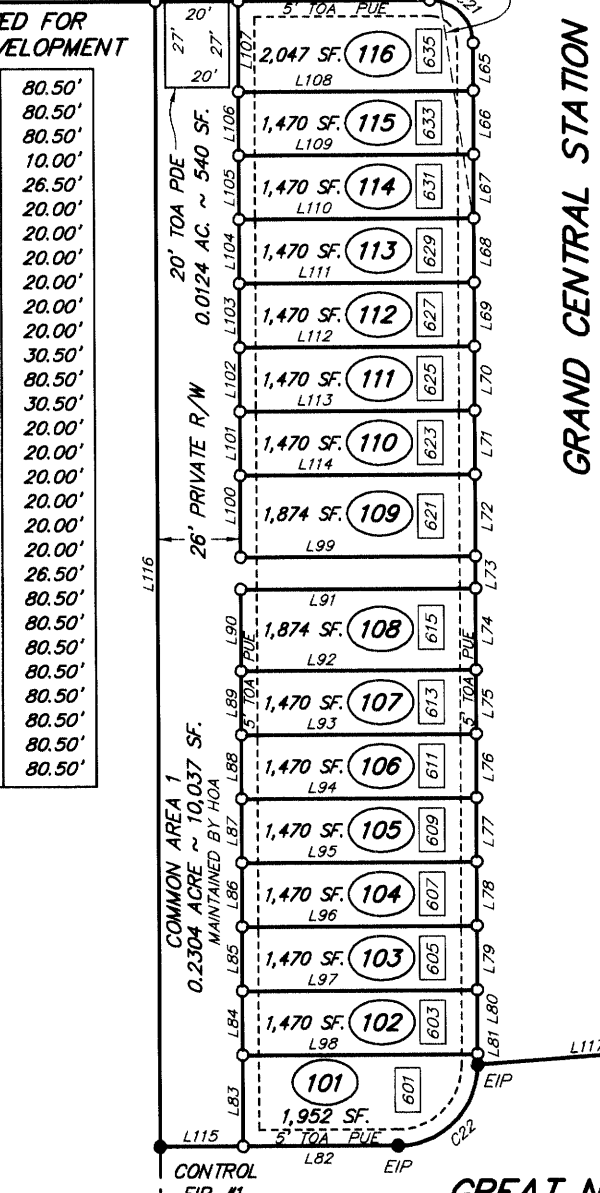
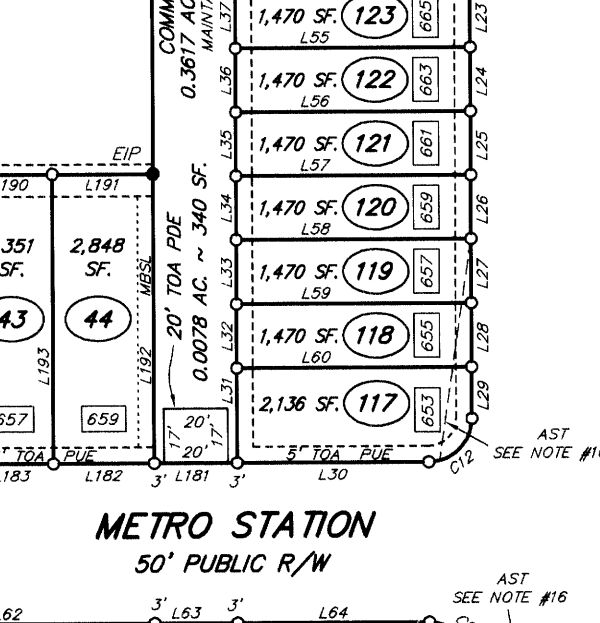
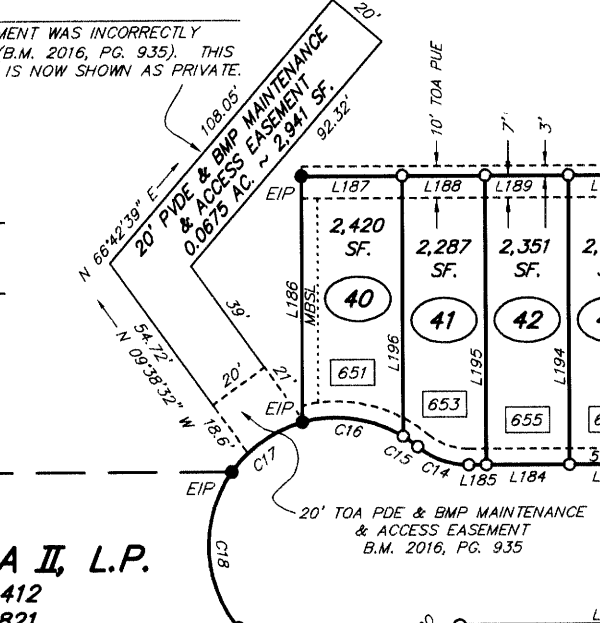
LINE	BEARING	LENGTH
L1	N 63°20'17" E	107.87'
L2	S 26°39'43" E	26.00'
L3	S 63°20'17" W	3.41'
L4	S 26°39'43" E	77.48'
L5	S 74°39'47" W	11.07'
L6	N 49°08'46" W	64.46'
L7	N 63°20'17" E	18.96'
L8	N 63°20'17" E	20.00'
L9	N 63°20'17" E	20.00'
L10	N 63°20'17" E	20.00'
L11	N 63°20'17" E	25.50'
L12	N 26°39'43" W	72.98'
L13	N 26°39'43" W	71.71'
L14	N 26°39'43" W	72.61'
L15	N 26°39'43" W	75.71'
L16	S 26°31'12" W	8.81'
L17	S 26°31'12" W	20.00'
L18	S 26°31'12" W	20.00'
L19	S 26°31'12" W	20.00'
L20	S 26°31'12" W	20.00'
L21	S 26°31'12" W	25.50'
L22	S 26°31'12" W	25.50'
L23	S 26°31'12" W	20.00'
L24	S 26°31'12" W	20.00'
L25	S 26°31'12" W	20.00'
L26	S 26°31'12" W	20.00'
L27	S 26°31'12" W	20.00'
L28	S 26°31'12" W	20.00'
L29	S 26°31'12" W	16.10'
L30	N 63°46'48" W	60.00'
L31	N 26°31'12" E	29.60'
L32	N 26°31'12" E	20.00'
L33	N 26°31'12" E	20.00'
L34	N 26°31'12" E	20.00'
L35	N 26°31'12" E	20.00'
L36	N 26°31'12" E	20.00'
L37	N 26°31'12" E	20.00'
L38	N 26°31'12" E	25.50'
L39	N 26°31'12" E	25.50'
L40	N 26°31'12" E	20.00'
L41	N 26°31'12" E	20.00'
L42	N 26°31'12" E	20.00'
L43	N 26°31'12" E	20.00'
L44	N 26°31'12" E	20.00'

L45	N 26°31'12" E	23.45'
L46	S 49°08'46" E	59.81'
L47	N 63°46'48" W	73.84'
L48	N 63°46'48" W	73.50'
L49	N 63°46'48" W	73.50'
L50	N 63°46'48" W	73.50'
L51	N 63°46'48" W	73.50'
L52	N 63°46'48" W	73.50'
L53	N 63°46'48" W	73.50'
L54	N 63°46'48" W	73.50'
L55	N 63°46'48" W	73.50'
L56	N 63°46'48" W	73.50'
L57	N 63°46'48" W	73.50'
L58	N 63°46'48" W	73.50'
L59	N 63°46'48" W	73.50'
L60	N 63°46'48" W	73.50'
L61	S 67°4'54" E	50.09'
L62	S 63°46'48" E	92.00'
L63	S 63°46'48" E	26.00'
L64	S 63°46'48" E	60.00'
L65	S 26°31'12" W	14.89'
L66	S 26°31'12" W	20.00'
L67	S 26°31'12" W	20.00'
L68	S 26°31'12" W	20.00'
L69	S 26°31'12" W	20.00'
L70	S 26°31'12" W	20.00'
L71	S 26°31'12" W	20.00'
L72	S 26°31'12" W	20.00'
L73	S 26°31'12" W	10.00'
L74	S 26°31'12" W	25.50'
L75	S 26°31'12" W	20.00'
L76	S 26°31'12" W	20.00'
L77	S 26°31'12" W	20.00'
L78	S 26°31'12" W	20.00'
L79	S 26°31'12" W	20.00'
L80	S 26°31'12" W	20.00'
L81	S 26°31'12" W	3.39'
L82	N 63°46'48" W	48.50'
L83	N 26°31'12" W	28.39'
L84	N 26°31'12" E	20.00'
L85	N 26°31'12" E	20.00'
L86	N 26°31'12" E	20.00'
L87	N 26°31'12" E	20.00'
L88	N 26°31'12" E	20.00'
L89	N 26°31'12" E	20.00'
L90	N 26°31'12" E	25.50'

CURVE DATA TABLE

CURVE	ARC	RADIUS	BEARING	CHORD
C1	78.39'	121.00'	N 44°46'45" E	77.02'
C2	14.83'	185.00'	S 72°22'00" W	14.83'
C3	20.05'	185.00'	S 66°57'56" W	20.04'
C4	20.03'	185.00'	S 60°45'33" W	20.02'
C5	20.25'	185.00'	S 54°31'18" W	20.24'
C6	21.00'	185.00'	S 48°08'05" W	20.99'
C7	27.17'	15.00'	N 02°45'03" E	23.61'
C8	14.41'	95.00'	N 58°59'34" E	14.40'
C9	26.02'	185.00'	S 40°51'14" W	26.00'
C10	23.04'	185.00'	S 33°52'21" W	23.03'
C11	11.19'	185.00'	S 27°57'13" W	11.19'
C12	21.21'	13.50'	S 71°31'21" W	19.09'
C13	27.39'	15.00'	N 78°32'13" E	23.74'
C14	17.33'	25.00'	N 43°55'21" W	16.98'
C15	5.62'	40.00'	N 28°05'33" W	5.62'
C16	32.73'	40.00'	N 55°33'59" W	31.82'
C17	27.57'	40.00'	S 81°50'20" W	48.70'
C18	52.36'	40.00'	S 24°00'20" W	16.98'
C19	17.33'	25.00'	S 06°21'50" W	16.98'
C20	21.21'	13.50'	S 71°31'21" W	19.09'
C21	21.21'	13.50'	S 18°46'48" E	19.09'
C22	39.27'	25.00'	S 71°31'21" W	35.36'
C23	181.02'	170.00'	N 53°21'14" E	155.06'
C24	39.28'	25.00'	S 54°29'42" E	35.37'
C25	484.49'	751.58'	S 27°56'41" E	476.14'
C26	484.49'	751.58'	S 09°49'49" E	35.76'
C27	123.28'	1389.94'	S 24°11'43" W	123.24'
C28	23.56'	15.00'	N 18°46'48" W	21.21'
C29	41.58'	25.00'	N 27°00'45" E	36.95'
C31	129.73'	666.20'	S 15°03'32" E	129.53'

CORRECTION NOTE:
THIS PORTION OF EASEMENT WAS INCORRECTLY RECORDED AS PUBLIC (B.M. 2016, PG. 935). THIS PORTION OF EASEMENT IS NOW SHOWN AS PRIVATE.



SHEET No. 1 of 2

MAJOR SUBDIVISION FINAL PLAT
VILLAGES OF APEX SOUTH
PHASE 1 ~ SECTION 4 ~ LOTS 40-44 & 101-151
PHASE 2 ~ LOTS 1 & 2
TOWN OF APEX, WHITE OAK TOWNSHIP, WAKE COUNTY, NORTH CAROLINA

LISTED OWNER
NORTH CAROLINA II, L.P.
2900 LINDEN LANE
SUITE 300
SILVER SPRING, MD 20910
P.O. BOX 457
APEX, N.C. 27502
(919) 362-7111

Smith and Smith surveyors
FIRM LICENSE No. C-0155
PITTSBORO, N.C. 27312
(919) 542-4321

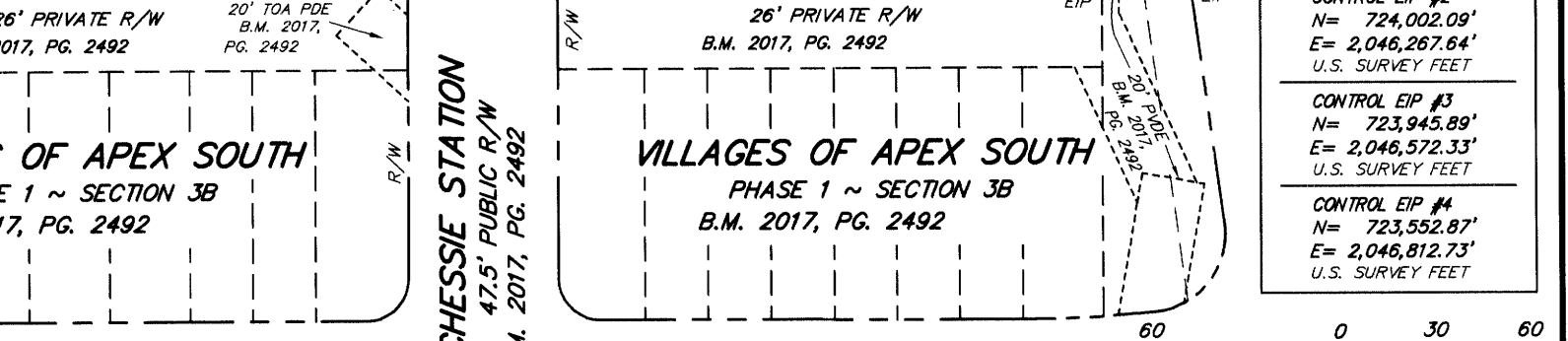
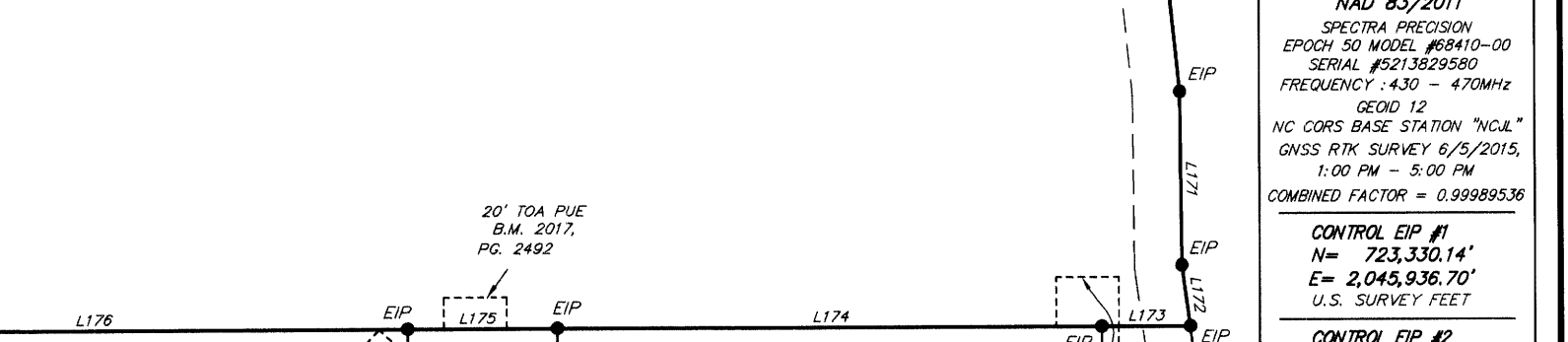
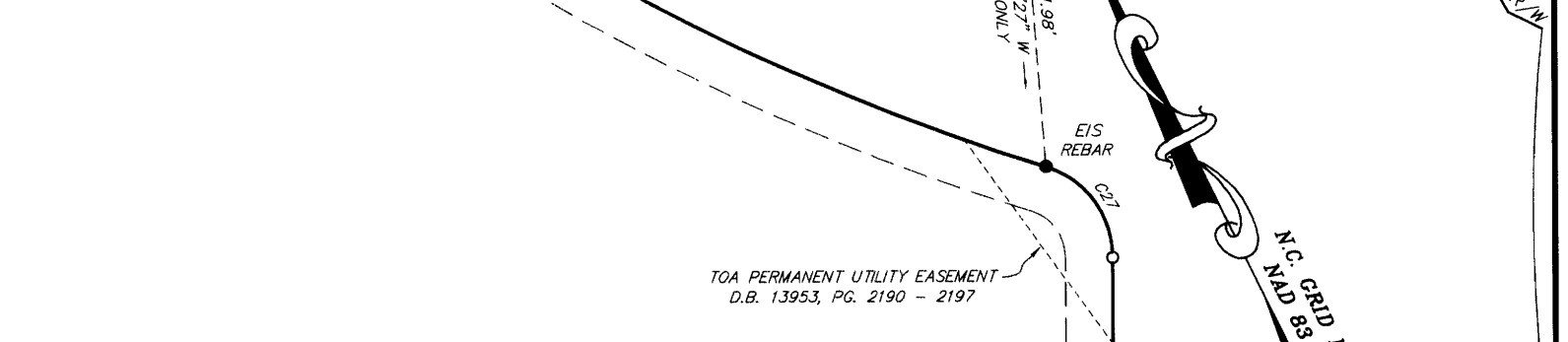
DATE JUNE 5, 2015
SCALE 1" = 60'
DRAWN BY W&H
PROJECT NO. 15-47

Legend

- EIP - Existing Iron Pipe
- EIS - Existing Iron Stake (Rebar)
- R/W - Right of Way
- MP - Mathematical Point Only (No Point Set)
- TOA - Town Of Apex
- SSE - Sanitary Sewer Easement
- PUE - Public Utility Easement
- PDE - Public Drainage Easement
- IPS - Iron Pipe Set
- XXXX - Street Address (Typical)
- PVDE - Private Drainage Easement
- MBSL - Minimum Building Setback Line
- HOA - Homeowners Association
- AASHTO - American Association of State & Highway Transportation Officials
- AST - AASHTO Sight Triangle
- PSE - Public Slope Easement
- BMP - Best Management Practice
- RCA - Resource Conservation Area

APEX PEAKWAY ASSOCIATES, LLC
D.B. 16532, PG. 680
B.M. 2016, PG. 889

L166	N 26°31'12" E	52.50'
L167	N 26°31'12" E	255.61'
L168	N 80°29'16" E	27.81'
L169	S 09°28'40" E	47.71'
L170	S 20°15'59" W	148.99'
L171	S 25°45'07" W	54.98'
L172	S 18°17'36" W	19.52'
L173	N 63°46'48" W	28.20'
L174	N 63°46'48" W	173.01'
L175	N 63°46'48" W	47.50'
L176	N 63°46'48" W	199.68'
L177	N 26°31'12" E	284.61'
L178	N 63°46'48" W	106.50'
L179	N 66°50'47" W	26.04'
L180	S 74°39'47" W	32.59'
L181	N 63°46'48" W	26.00'
L182	N 63°46'48" W	31.50'
L183	N 63°46'48" W	26.00'
L184	N 63°46'48" W	26.00'
L185	N 63°46'48" W	5.46'
L186	N 26°31'12" E	78.81'
L187	S 63°46'48" E	31.50'
L188	S 63°46'48" E	26.00'
L189	S 63°46'48" E	26.00'
L190	S 63°46'48" E	26.00'
L191	S 63°46'48" E	31.50'
L192	S 26°31'12" W	90.41'
L193	S 26°31'12" W	90.41'
L194	S 26°31'12" W	90.41'
L195	S 26°31'12" W	90.41'
L196	S 26°31'12" W	81.36'
L197	N 26°31'12" E	250.92'
L198	S 09°28'40" E	1.79'



CONTROL POINTS
N.C. GRID COORDINATES
NAD 83/2011
SPECTRA PRECISION
EPOCH 50 MODEL #68410-00
SERIAL #5213829580
FREQUENCY: 4.30 - 470MHz
CE25 12
NC CORRS BASE STATION "NCIL"
02655 RTK SURVEY 6/5/2015,
1:00 PM - 5:00 PM
COMBINED FACTOR = 0.99989536

CONTROL EIP #1
N = 723,330.14'
E = 2,045,936.70'
U.S. SURVEY FEET

CONTROL EIP #2
N = 724,002.09'
E = 2,046,267.64'
U.S. SURVEY FEET

CONTROL EIP #3
N = 723,945.89'
E = 2,046,572.33'
U.S. SURVEY FEET

CONTROL EIP #4
N = 723,552.87'
E = 2,046,872.73'
U.S. SURVEY FEET

SCALE
1" = 60 FT.
(IN FEET)
1 inch = 60 ft.