

PICKETT SPROUSE

COMMERCIAL
REAL ESTATE



A WEST & WOODALL COMPANY

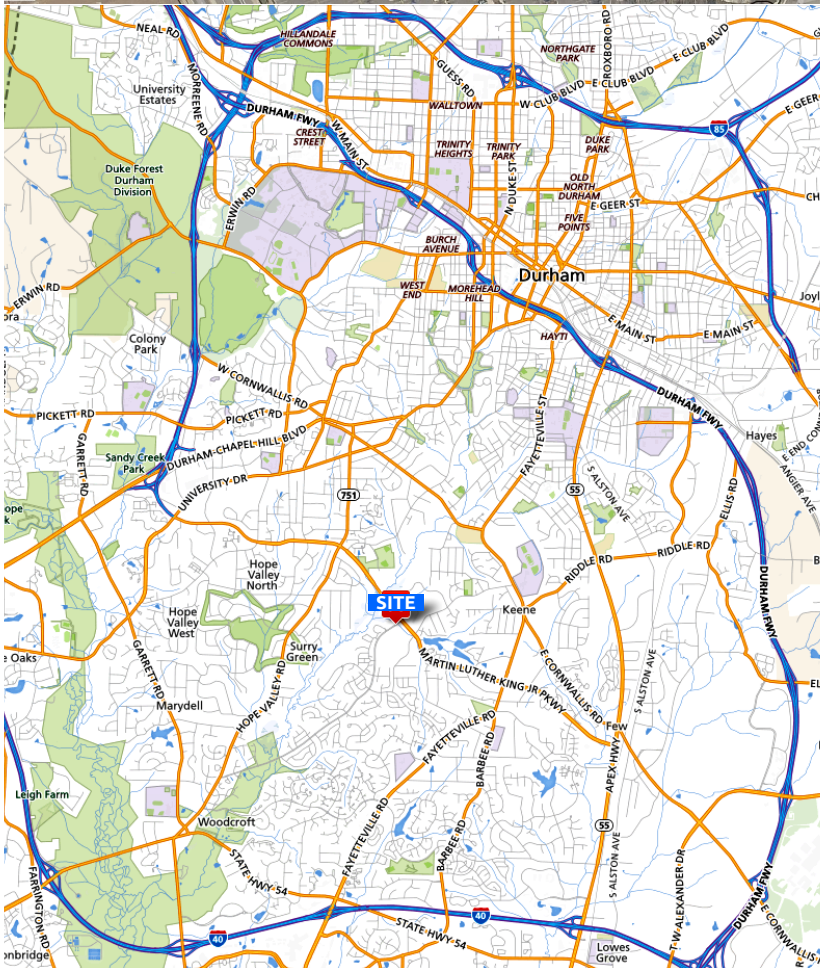


Residential Land

FOR SALE

623 Ardmore Dr
Durham NC 27713

Southwest Durham
near Hope Valley Farms



- ±17.2 acres
- PDR 3.44 zoning:
Low Density Residential
- Best Use—Residential
- Wooded land
- Price \$34,900

For more information, please contact:

Jerry Gambill

jgambill@pickett-sprouse.com
Direct 919-287-3047

Visit us at pickett-sprouse.com

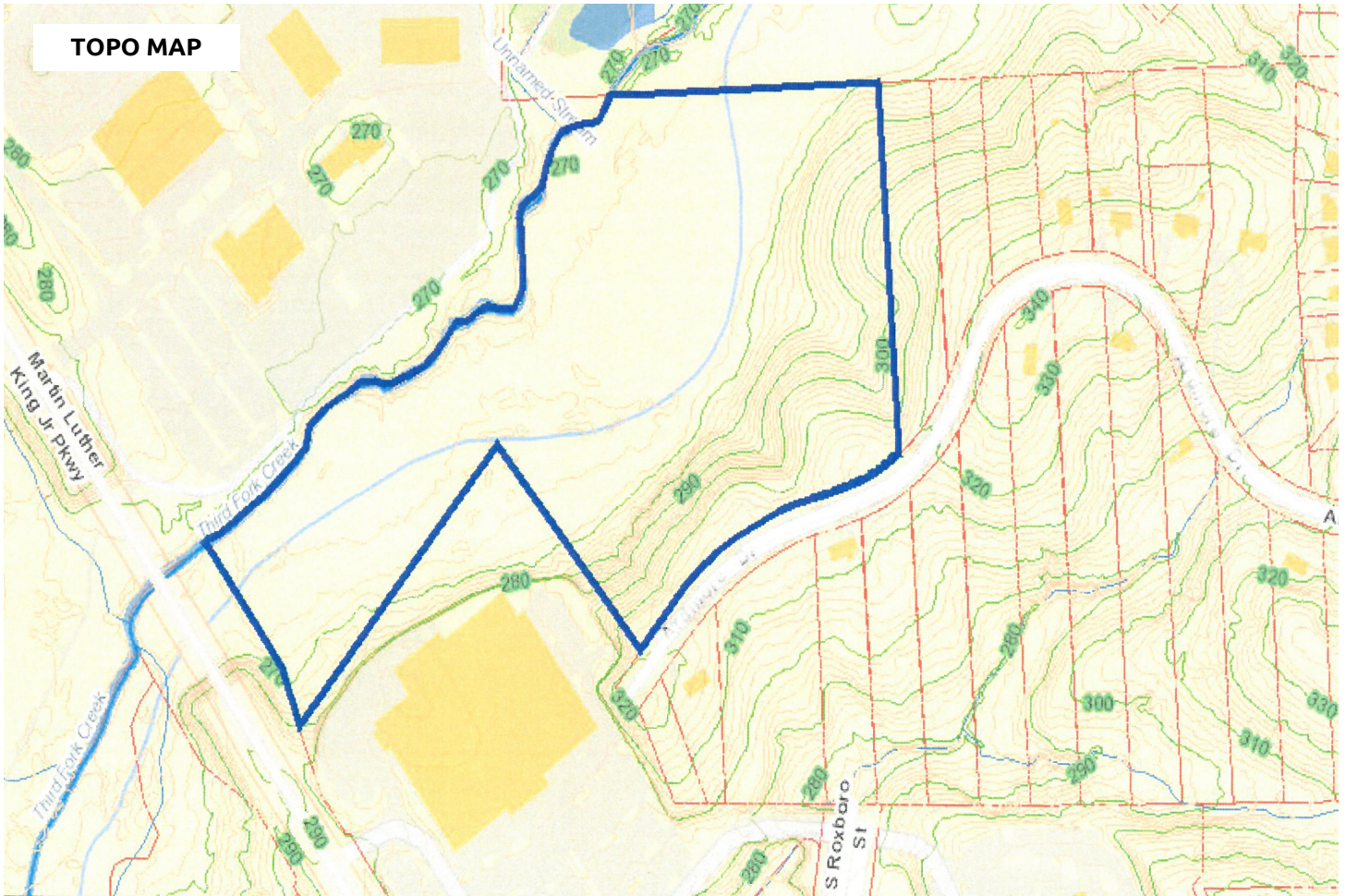


RESIDENTIAL LAND FOR SALE

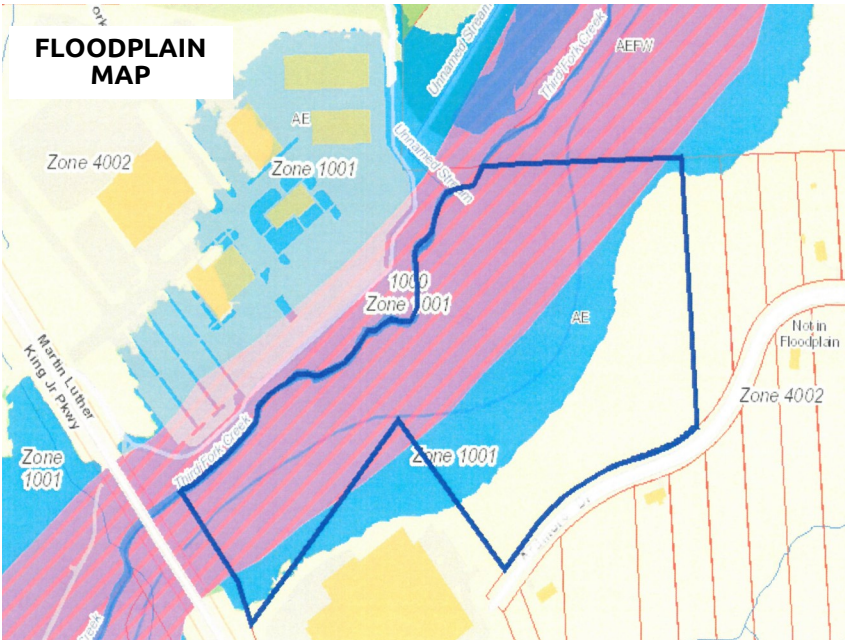
623 Ardmore Dr, Durham NC 27713

Jerry Gambill
jgambill@pickett-sprouse.com
Direct 919-287-3047

TOPO MAP



FLOODPLAIN MAP



AERIAL

