

VICINITY MAP  
NOT TO SCALE  
REFERENCES:

DB 173 PG 16, PG 5 PG 49  
DB 1316 PG 714, PG 112 PG 99  
DB 1891 PG 27, DB 2338 PG 362  
DB 2215 PG 811, PB 150 PG 159  
NCDOT ENCROACHMENT AGREEMENT DATED 07/06/00

LEGEND:

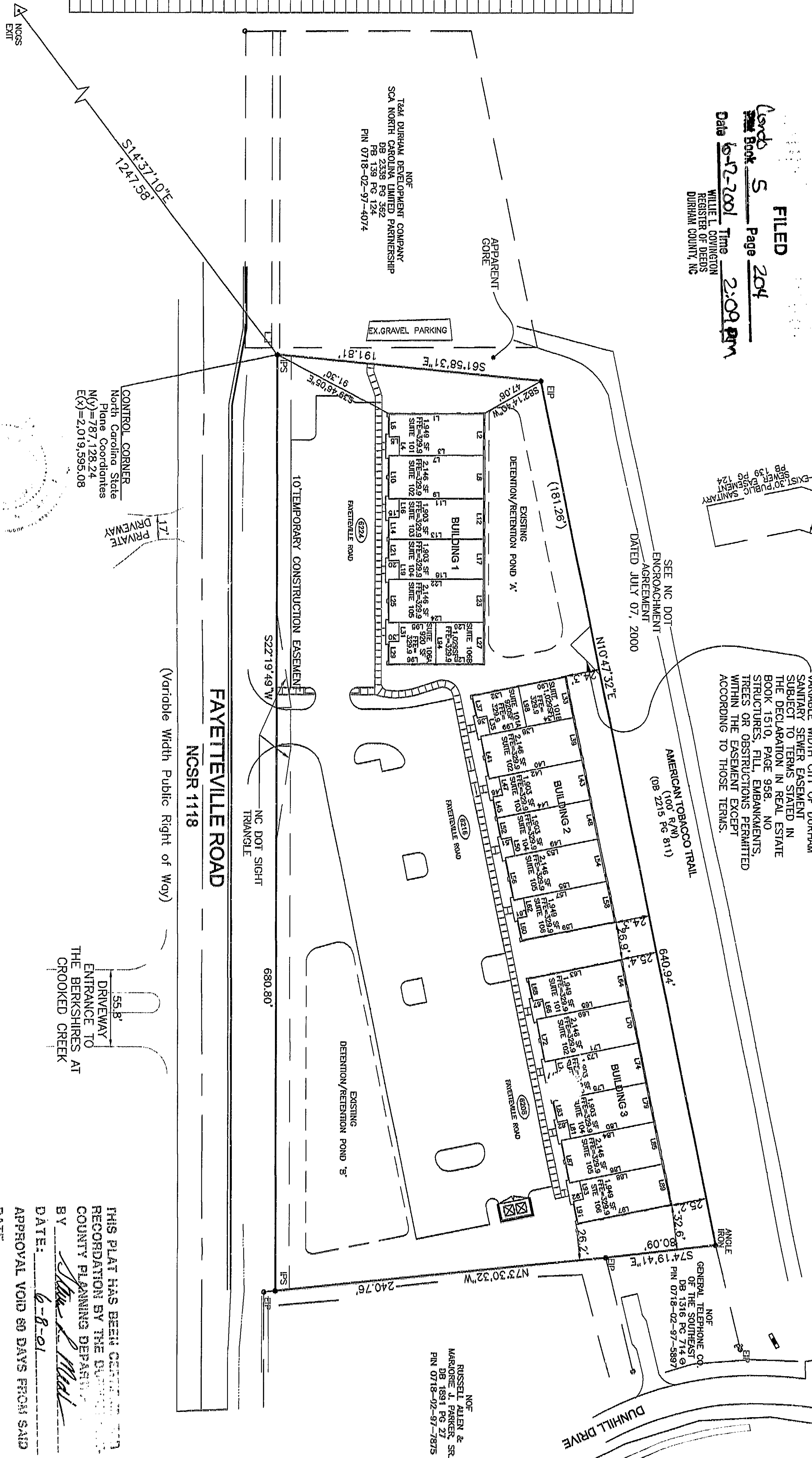
- EIP - EXISTING IRON PIPE
- IPS - IRON PIPE SET
- PP - POWER POLE
- FH - FIRE HYDRANT
- ADJACENT PROPERTY LINES
- EASEMENT

(R00) ADDRESS

- NOTES:
1. THERE IS NO OPEN SPACE ON THIS PROPERTY.
  2. THIS PLAN IS IN ACCORDANCE WITH THE TFEAR PLAN.
  3. THIS PLAN IS IN CONFORMANCE WITH THE "DURHAM URBAN TRAILS AND GREENWAYS PLAN".
  4. THE TOTAL PROPOSED IMPERVIOUS SURFACE FOR THIS SITE IS 112,792SF, PER THE APPROVED SITE PLAN.

FILED  
Book 5 Page 204  
Date 6-12-2001 Time 2:09 PM  
WILLIE L. COVINGTON  
REGISTER OF DEEDS  
DURHAM COUNTY, NC

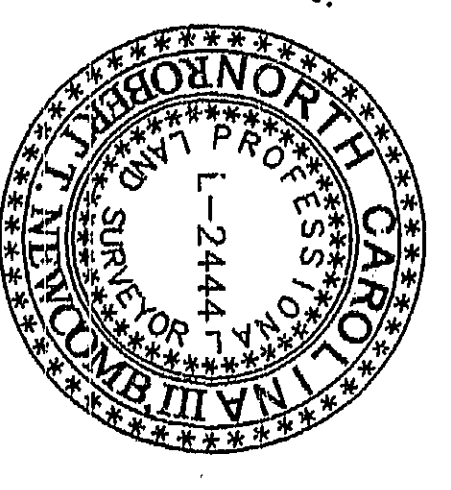
LINE	LENGTH	BEARINGS	LINE	LENGTH	BEARINGS
L1	68.29	N67°45'16"W	L51	7.17	S79°12'28"E
L2	29.96	N62°14'44"E	L52	15.71	S10°47'32"W
L3	61.13	S67°45'16"E	L53	68.29	N79°12'28"W
L4	13.58	S62°14'44"W	L54	31.42	N10°47'32"E
L5	7.17	S67°45'16"E	L55	61.13	S79°12'28"E
L6	16.38	N67°45'16"W	L56	31.42	S10°47'32"W
L7	68.29	N62°14'44"E	L57	68.29	N79°12'28"W
L8	31.42	N67°45'16"W	L58	28.96	N10°47'32"E
L9	41.42	N62°14'44"W	L59	16.38	S67°45'16"E
L10	41.42	N67°45'16"W	L60	16.38	S79°12'28"E
L11	41.42	S62°14'44"W	L61	7.17	N10°47'32"W
L12	68.29	N67°45'16"W	L62	7.17	N10°47'32"W
L13	68.29	N62°14'44"W	L63	68.29	N79°12'28"W
L14	7.17	S67°45'16"W	L64	61.13	S10°47'32"W
L15	13.58	S62°14'44"W	L65	61.13	S79°12'28"E
L16	28.96	N67°45'16"W	L66	68.29	N79°12'28"W
L17	28.96	N62°14'44"W	L67	7.17	S10°47'32"W
L18	61.13	S67°45'16"W	L68	68.29	N79°12'28"W
L19	13.58	S62°14'44"W	L69	68.29	N79°12'28"W
L20	7.17	S67°45'16"W	L70	31.42	S10°47'32"W
L21	15.71	N62°14'44"W	L71	61.13	S10°47'32"W
L22	68.29	N67°45'16"W	L72	31.42	S10°47'32"W
L23	31.42	N62°14'44"W	L73	68.29	N79°12'28"W
L24	68.29	N67°45'16"W	L74	28.96	N10°47'32"E
L25	31.42	S62°14'44"W	L75	68.29	N79°12'28"W
L26	34.33	S67°45'16"E	L76	15.71	S10°47'32"W
L27	29.96	N62°14'44"W	L77	7.17	N10°47'32"E
L28	68.29	S67°45'16"E	L78	13.58	S10°47'32"W
L29	16.38	N62°14'44"W	L79	28.96	N10°47'32"E
L30	7.17	N67°45'16"W	L80	61.13	S10°47'32"W
L31	13.58	N62°14'44"W	L81	13.58	S79°12'28"E
L32	33.56	N10°47'32"E	L82	7.17	S10°47'32"W
L33	29.96	N10°47'32"E	L83	15.71	S10°47'32"W
L34	34.33	S10°47'32"W	L84	68.29	N79°12'28"W
L35	13.58	S10°47'32"W	L85	31.42	N10°47'32"E
L36	7.17	S10°47'32"W	L86	68.29	N79°12'28"W
L37	16.38	S10°47'32"W	L87	31.42	S10°47'32"W
L38	68.29	N67°45'16"W	L88	61.13	S10°47'32"W
L39	31.42	N62°14'44"W	L89	28.96	N10°47'32"E
L40	81.13	S79°12'28"E	L90	34.33	N79°12'28"W
L41	31.42	S10°47'32"W	L91	16.38	N10°47'32"E
L42	68.29	N67°45'16"W	L92	7.17	N79°12'28"W
L43	28.96	N10°47'32"E	L93	13.58	S10°47'32"W
L44	68.29	N62°14'44"W	L94	28.96	S27°14'44"W
L45	15.71	N10°47'32"W	L95	28.96	S67°45'16"E
L46	7.17	N79°12'28"W	L96	33.56	S67°45'16"E
L47	13.58	N10°47'32"W	L97	68.29	S79°12'28"E
L48	28.96	N10°47'32"E	L98	28.96	N10°47'32"E
L49	61.13	S79°12'28"E	L99	28.96	S79°12'28"E
L50	13.58	S10°47'32"W			



ARCHITECT CERTIFICATE  
I HEREBY CERTIFY THAT THESE PLATS AND PLANS CONTAIN ALL OF THE INFORMATION REQUIRED UNDER N.C. GENERAL STATUTES SECTION 47C-2-109 AND THAT THESE PLAT FULLY AND ACCURATELY DEPICT THE LAYOUT, LOCATION, CEILING AND FLOOR ELEVATIONS, UNIT NUMBERS, AND DIMENSIONS OF THE UNITS, AS BUILT.  
ARCHITECT: *[Signature]*  
DATE: June 4, 2001

OWNER:  
FAYETTEVILLE ROAD OFFICE PARTNERS, LLC  
P.O. BOX 28861  
RALEIGH, NC 27611  
(919) 873-9227  
ZONING: 084-2 W / F/J-B WATERSHED OVERLAY  
PIN 0718-02-97-6419

THIS PLAT HAS BEEN CERTIFIED FOR RECORDATION BY THE DURHAM COUNTY PLANNING DEPARTMENT.  
BY: *[Signature]*  
DATE: 6-8-01  
APPROVAL VOID 90 DAYS FROM SAID DATE.



Witness my original signature, registration number and seal this day of June, 2001.  
Professional Land Surveyor (1-2444)

NOTARY PUBLIC  
I, *[Signature]*, a Notary Public of the County and State aforesaid, do hereby certify that *[Signature]* personally came before me this day and acknowledged to me the execution of the foregoing instrument.  
My commission expires: 11-04-2004.

CONDOMINIUM MAP  
FAYETTEVILLE ROAD OFFICE PARK II  
DURHAM COUNTY  
NORTH CAROLINA

RECORDED IN BOOK \_\_\_\_\_ PAGE \_\_\_\_\_ DURHAM COUNTY REGISTRY  
NEWCOMB Land Surveyors, LLC, 246 West Millbrook Road, Raleigh, NC 27609, (919) 847-1800, (919) 847-1804 (fax)