

Orange County North Carolina

258676
610 JONES FERRY RD UNIT 104

MAILING ADDRESS HACKNEY BETSY S
SUITE 104
CHAPEL HILL NC 27516

Total Assessed Value
\$335,600

KEY INFORMATION

Tax Year	2021		
Parcel ID	9778343325.004	Township	7 - CHAPEL HILL
Land Size	1.00	Land Units	HMOA
Rate Code	21		
District Codes	G1 Carrboro, G0 County, CH CHSchoolDst.		
Property LUC	Offices, Banks and Medical-Improved		
Neighborhood	C805 - 7WILLOWCRK		
Legal Description	#104 WILLOW CREEK CONDO P90/82- 87 FIRST FLOOR		
Exempt Type	-		

APPRAISAL DETAILS

Total Land	\$0
Ag Credit	-
Land	\$0
Building	\$335,600
Yard Items	\$0
Market Total	\$335,600
Total Assessed	\$335,600

RESIDENTIAL

BUILDING (1)					
Type	Ofc-Condo	Total Value	\$335,600	Finished Sq Ft	1,617 sf
Style	-	Quality	Grade B	Condition	Average
Year Built	2001	Exterior Walls		Full Bath	0
Roof Cover		Half Bath	0	HVAC	
Bedrooms	-	Garage Type	-		

MISC IMPROVEMENTS

IMPROVEMENT TYPE	UNITS/SQ FT	EST YEAR BUILT	APPRAISED VALUE
No items to display			

SALES

SALE DATE	SALE PRICE	DEED BOOK	DEED PAGE	INSTRUMENT TYPE	GRANTOR
06/13/2002	\$314,000	2617	41		WILLOW CREEK OFFICE PARK
06/13/2002	\$314,000	2617	41		WILLOW CREEK OFFICE PARK LLC

YARD ITEMS

DESCRIPTION	TOTAL UNITS	YEAR BUILT	LENGTH	WIDTH	HEIGHT
-------------	-------------	------------	--------	-------	--------

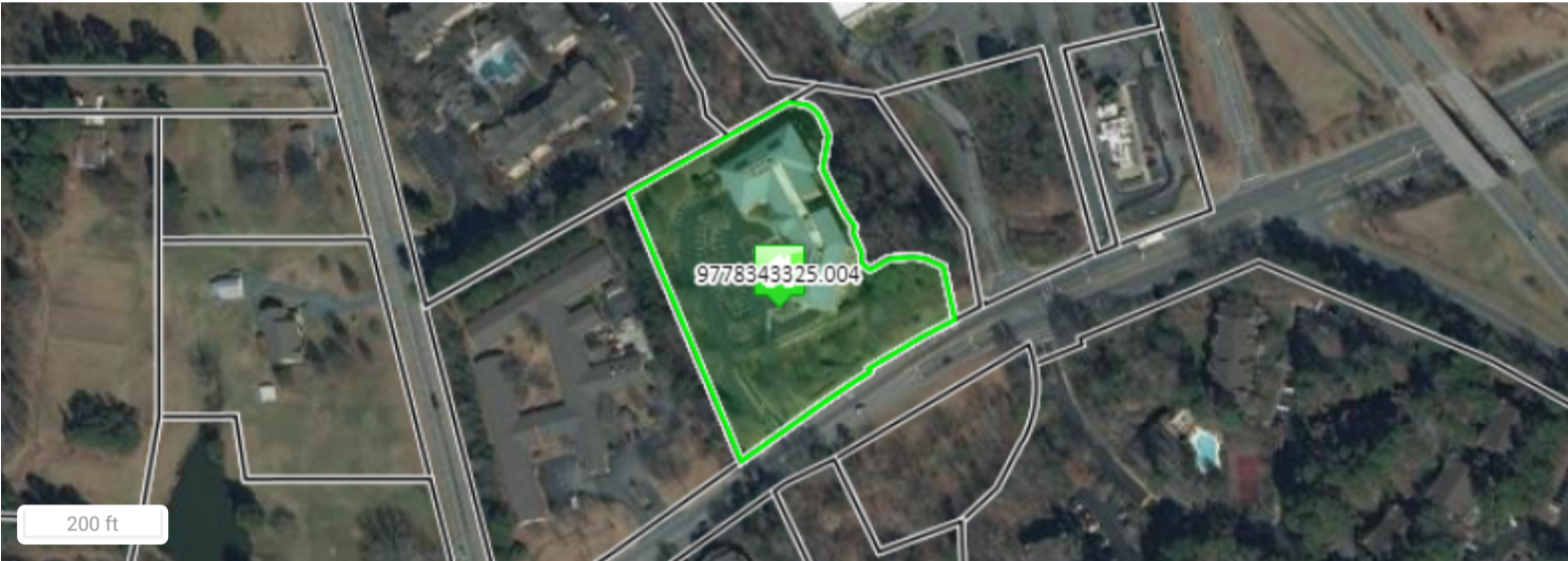
No items to display

LAND

UNIT / SOIL TYPE	DESCRIPTION	USE CODE	ACRES / LOTS	VALUE
HMOA	HMO Com Area	PRIMARY	1	\$0

VALUE HISTORY

YEAR	TOTAL MARKET VALUE
2020	\$257,800
2019	\$257,800
2018	\$257,800
2017	\$257,800
2016	\$349,246
2015	\$349,246
2014	\$349,246
2013	\$349,246
2012	\$349,246
2011	\$349,246



Unsketched Subareas:
CO (1617)

Disclaimer

Orange County Assessor's Office makes every effort to produce the most accurate information possible. **No warranties, expressed or implied, are provided for the data herein, its use or interpretation.**