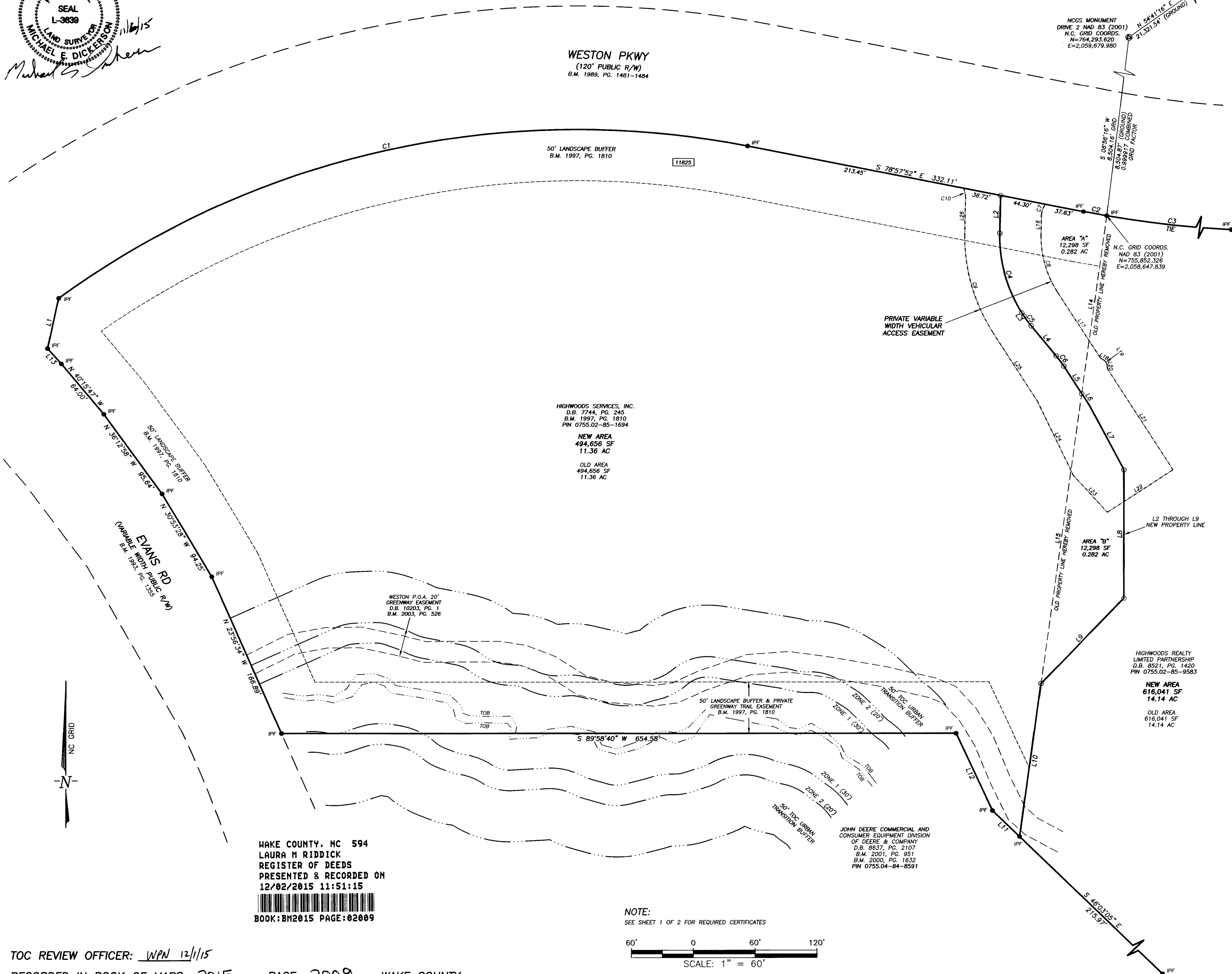


NORTH CAROLINA
PROFESSIONAL
SEAL
L-9839
LAND SURVEYOR
MICHAEL E. DICKERSON
Michael E. Dickerson



HIGHWOODS SERVICES, INC.
 D.B. 7744, PG. 245
 B.M. 1997, PG. 1810
 PIN 0755.02-85-1694

NEW AREA
 494,656 SF
 11.36 AC


OLD AREA
 494,656 SF
 11.36 AC

HIGHWOODS REALTY LIMITED PARTNERSHIP
 D.B. 8521, PG. 1420
 PIN 0755.02-85-9583

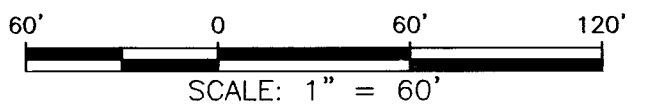
NEW AREA
 616,041 SF
 14.14 AC

OLD AREA
 616,041 SF
 14.14 AC

JOHN DEERE COMMERCIAL AND CONSUMER EQUIPMENT DIVISION OF DEERE & COMPANY
 D.B. 8637, PG. 2107
 B.M. 2001, PG. 951
 B.M. 2000, PG. 1632
 PIN 0755.04-84-8591

WAKE COUNTY, NC 594
 LAURA M RIDDICK
 REGISTER OF DEEDS
 PRESENTED & RECORDED ON
 12/02/2015 11:51:15

 BOOK:BM2015 PAGE:02009

NOTE:
 SEE SHEET 1 OF 2 FOR REQUIRED CERTIFICATES



TOC REVIEW OFFICER: WPN 12/1/15
 RECORDED IN BOOK OF MAPS 2015, PAGE 2009, WAKE COUNTY

WITHERS & RAVENEL
ENGINEERS | PLANNERS | SURVEYORS
 115 Mackeran Drive Cary, North Carolina 27511 www.wITHERSRV.com
 tel: 919-469-3340 Corporate License #C-832

RECOMBINATION PLAT FOR
 HIGHWOODS REALTY LIMITED PARTNERSHIP
 & HIGHWOODS SERVICES, INC.
 CARY TOWNSHIP WAKE COUNTY NORTH CAROLINA
 PLAT OF SURVEY

NO.	DATE	DESCRIPTION	BY

DATE: 10/6/15	SCALE: 1" = 60'
DRAWN: MED	CHECKED: MED
SHEET: 2 OF 2	
CAD FILE: BD_15129B	
PROJECT NO: 02130270	