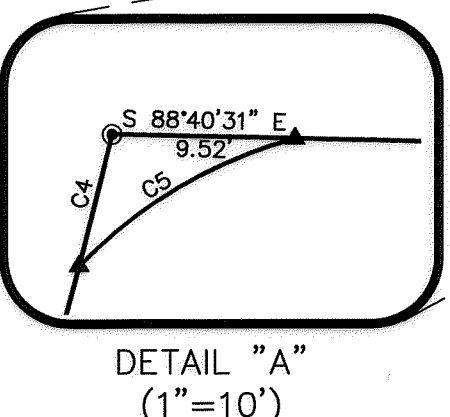
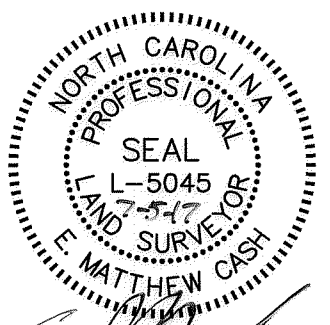


ESMT. CURVE TABLE				
CURVE	RADIUS	ARC LENGTH	CHORD BEARING	CHORD LENGTH
EC1	32.00'	48.26'	N 45°04'30" E	43.82'
EC2	32.00'	48.26'	N 45°04'30" E	43.82'
EC3	13.00'	10.53'	N 68°20'47" E	10.25'
EC4	13.00'	10.46'	N 22°05'30" E	10.18'
EC5	56.71'	32.50'	N 58°58'34" E	32.05'
EC6	12.00'	18.10'	S 45°04'30" W	16.43'
EC7	52.00'	78.43'	S 45°04'30" W	71.20'
EC8	408.21'	25.76'	S 06°49'38" W	25.76'

CURVE TABLE				
CURVE	RADIUS	ARC LENGTH	CHORD BEARING	CHORD LENGTH
C1	408.21'	61.88'	S 09°21'42" W	61.82'
C2	277.21'	92.36'	S 20°12'09" W	91.94'
C3	453.96'	122.17'	N 22°12'15" E	121.80'
C4	453.96'	7.06'	N 14°02'57" E	7.06'
C5	24.50'	13.20'	S 59°27'40" W	13.04'
C6	24.50'	33.40'	S 36°13'56" E	30.88'
C7	32.50'	14.19'	N 73°44'36" E	14.08'

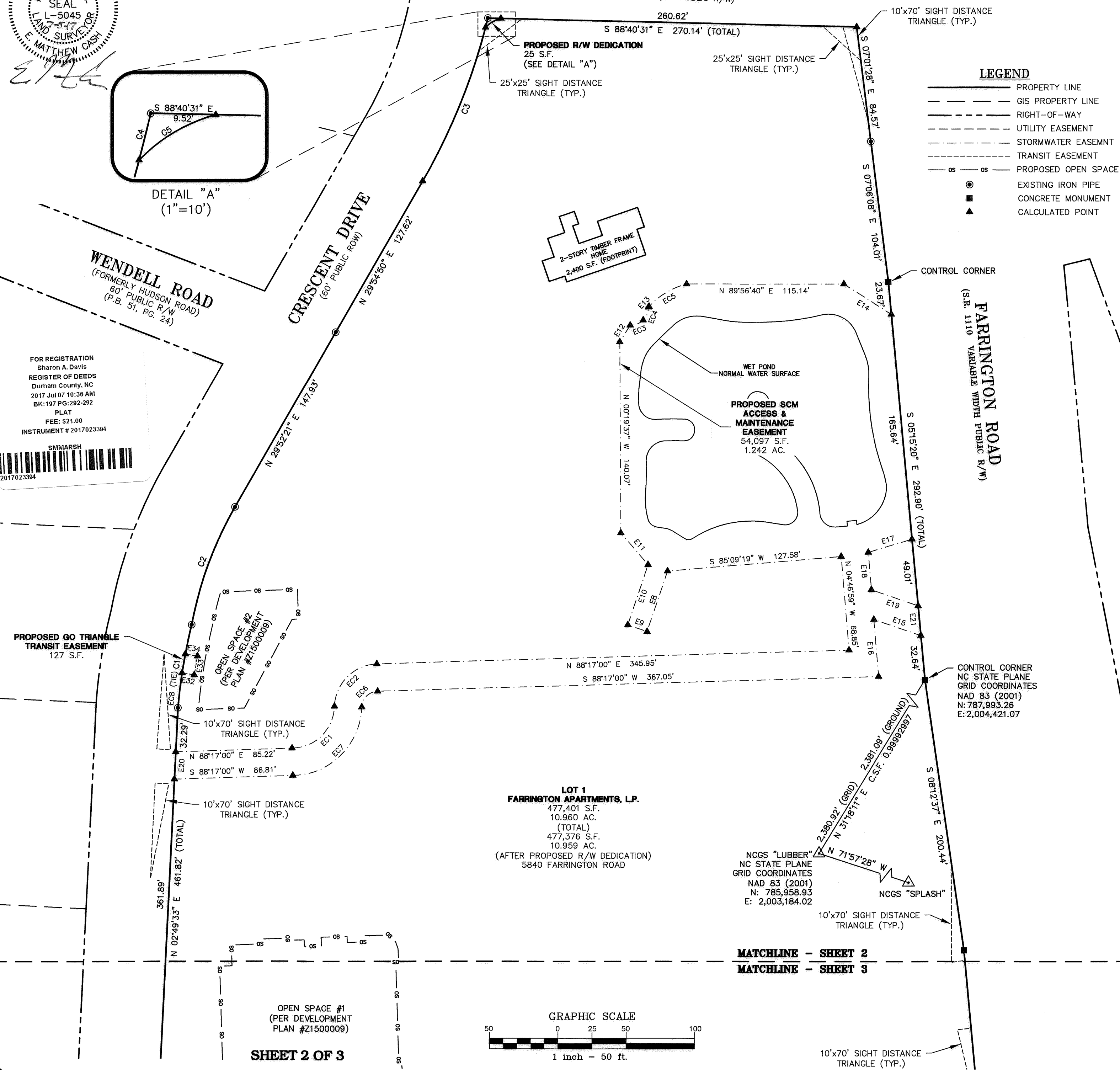
ESMT. LINE TABLE		
LINE	BEARING	DISTANCE
E1	N 00°27'17" W	37.77'
E2	N 45°27'17" W	9.10'
E3	N 88°19'18" W	37.41'
E4	N 02°49'33" E	10.00'
E5	S 88°19'18" E	41.14'
E6	S 45°27'17" E	17.17'
E7	S 00°27'17" E	37.77'
E8	S 18°35'57" W	46.88'
E9	N 70°49'27" W	15.00'
E10	N 18°35'53" E	46.55'
E11	N 40°31'24" W	30.74'
E12	N 32°01'24" E	14.41'
E13	N 42°33'35" E	0.70'
E14	S 57°26'12" E	41.20'
E15	N 70°59'58" W	36.35'
E16	S 04°46'59" E	42.02'
E17	S 73°08'10" W	33.42'

ESMT. LINE TABLE		
LINE	BEARING	DISTANCE
E18	S 04°46'59" E	27.44'
E19	S 70°59'58" E	36.15'
E20	N 02°49'33" E	20.06'
E21	S 05°15'20" E	21.94'
E22	S 45°27'17" E	10.82'
E23	N 01°43'00" W	8.41'
E24	N 88°17'00" E	10.00'
E25	S 01°43'00" E	8.41'
E26	N 88°17'00" E	9.76'
E27	S 05°11'29" E	10.02'
E28	S 01°43'00" E	20.50'
E29	S 88°17'00" W	10.00'
E30	N 01°43'00" W	20.50'
E31	N 45°27'17" W	19.24'
E32	S 80°22'55" E	9.00'
E33	N 09°37'05" E	14.00'
E34	N 80°22'55" W	9.00'



RUTGERS PLACE
(60' PUBLIC R/W)

- LEGEND**
- PROPERTY LINE
 - - - GIS PROPERTY LINE
 - - - RIGHT-OF-WAY
 - - - UTILITY EASEMENT
 - - - STORMWATER EASEMENT
 - - - TRANSIT EASEMENT
 - - - PROPOSED OPEN SPACE
 - EXISTING IRON PIPE
 - CONCRETE MONUMENT
 - ▲ CALCULATED POINT

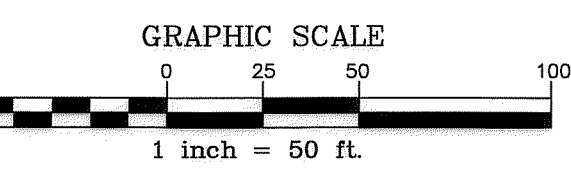


FOR REGISTRATION
Sharon A. Davis
REGISTER OF DEEDS
Durham County, NC
2017 Jul 07 10:36 AM
BK:197 PG:292-292
PLAT
FEE: \$21.00
INSTRUMENT # 2017023394



PROPOSED GO TRIANGLE
TRANSIT EASEMENT
127 S.F.

OPEN SPACE #1
(PER DEVELOPMENT
PLAN #Z1500009)



SHEET 2 OF 3

MATCHLINE - SHEET 2
MATCHLINE - SHEET 3

	FARRINGTON ROAD	OWNERS: LRC VI, L.L.C. 312 CLOISTER COURT CHAPEL HILL, NC 27614	REVISIONS: ▲ REVISED PER COD COMMENTS-4/11/17 ▲ REVISED PER COD COMMENTS-5/11/17 ▲ REVISED PER COD COMMENTS-6/27/17	
	MIXED USE	FARRINGTON APARTMENTS, L.P. 3211 SHANNON ROAD SUITE 410 DURHAM, NC 27707	THE JOHN R. MCADAMS COMPANY, INC. 2905 Meridian Parkway Durham, North Carolina 27713 License No.: C-0293 (800) 733-5646 McAdamsCo.com	
PROJECT NO. WDP-14000 TITLE NAME: WDP-14000-F1 CHECKED BY: RTF DRAWN BY: EMC SCALE: AS SHOWN DATE: 2017-07-05	TRIANGLE TOWNSHIP, DURHAM COUNTY, NC	FINAL PLAT		McADAMS