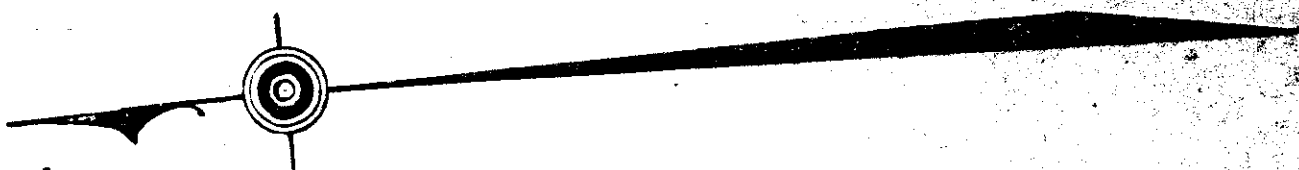


Prob 25 & Pd



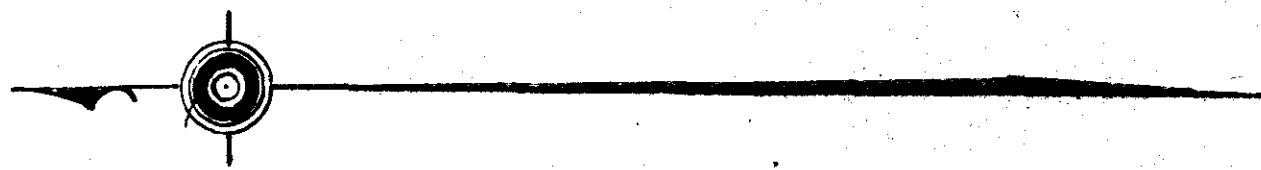
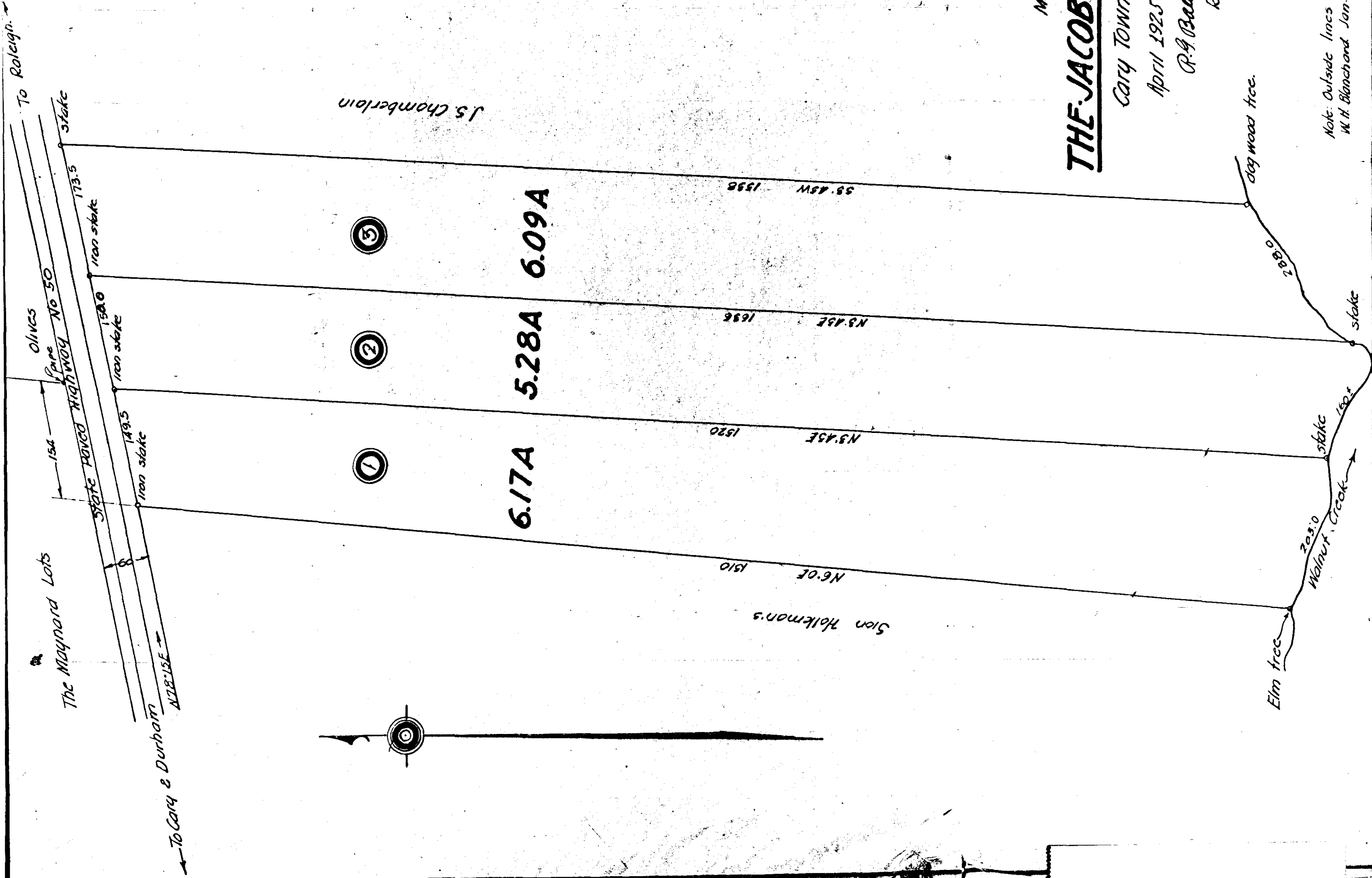
Mrs Maynard's

25	575.7	Sorrell's	40	432.0
26	575.7	64	85	422.5
27	575.9	82	86	422.1
28	575.1	81	87	422.0
29	572.0	80	88	421.7
30	574.8	79	89	421.5
31	574.6	78	90	421.2
32	574.4	77	91	420.9
33	574.3	76	92	420.7
34	574.1	75	93	420.4
35	569	74	94	421.2
36	558	73	95	422.9
37	550	72	96	455.7
38	542	71	97	457.4
39	534	70	98	475.2
40	526.1	69	99	490.9
41	518.1	68	100	502.7
42	510.1	67	101	514.3
43	502.1	66	102	526.1
44	494.1	65	103	537.8
45	486.2	64	104	549.6
46	478.2	63	105	561.3
47	470.2	62	106	573.1
48	462.2	61	107	584.9
49	454.2	60	108	596.6
50	446.1	59	109	608.2
51	438.1	58	110	620.0
52	430.1	57	111	631.7
53	422.1	56	112	643.4
54	414.1	55	113	655.2
55	406.1	54	114	667.0
56	398.1	53	115	678.7
57	390.1	52	116	690.5
58	382.1	51	117	702.2
59	374.1	50	118	714.0
60	366.1	49	119	725.7
61	358.1	48	120	737.5
62	350.1	47	121	749.2
63	342.1	46	122	761.0
64	334.1	45	123	772.7
65	326.1	44	124	784.5
66	318.1	43	125	796.2
67	310.1	42	126	808.0
68	302.1	41	127	819.7
69	294.1	40	128	831.5
70	286.1	39	129	843.2
71	278.1	38	130	855.0
72	270.1	37	131	866.7
73	262.1	36	132	878.5
74	254.1	35	133	890.2
75	246.1	34	134	902.0
76	238.1	33	135	913.7
77	230.1	32	136	925.5
78	222.1	31	137	937.2
79	214.1	30	138	949.0
80	206.1	29	139	960.7
81	198.1	28	140	972.5
82	190.1	27	141	984.2
83	182.1	26	142	996.0
84	174.1	25	143	1007.7
85	166.1	24	144	1019.5
86	158.1	23	145	1031.2
87	150.1	22	146	1043.0
88	142.1	21	147	1054.7
89	134.1	20	148	1066.5
90	126.1	19	149	1078.2
91	118.1	18	150	1090.0
92	110.1	17	151	1101.7
93	102.1	16	152	1113.5
94	94.1	15	153	1125.2
95	86.1	14	154	1137.0
96	78.1	13	155	1148.7
97	70.1	12	156	1160.5
98	62.1	11	157	1172.2
99	54.1	10	158	1184.0
100	46.1	9	159	1195.7
101	38.1	8	160	1207.5
102	30.1	7	161	1219.2
103	22.1	6	162	1231.0
104	14.1	5	163	1242.7
105	6.1	4	164	1254.5
106	0.1	3	165	1266.2
107		2	166	1278.0
108		1	167	1289.7
109		0	168	1301.5
110			169	1313.2
111			170	1325.0
112			171	1336.7
113			172	1348.5
114			173	1360.2
115			174	1372.0
116			175	1383.7
117			176	1395.5
118			177	1407.2
119			178	1419.0
120			179	1430.7
121			180	1442.5
122			181	1454.2
123			182	1466.0
124			183	1477.7
125			184	1489.5
126			185	1501.2
127			186	1513.0
128			187	1524.7
129			188	1536.5
130			189	1548.2
131			190	1560.0
132			191	1571.7
133			192	1583.5
134			193	1595.2
135			194	1607.0
136			195	1618.7
137			196	1630.5
138			197	1642.2
139			198	1654.0
140			199	1665.7
141			200	1677.5
142			201	1689.2
143			202	1701.0
144			203	1712.7
145			204	1724.5
146			205	1736.2
147			206	1748.0
148			207	1759.7
149			208	1771.5
150			209	1783.2
151			210	1795.0
152			211	1806.7
153			212	1818.5
154			213	1830.2
155			214	1842.0
156			215	1853.7
157			216	1865.5
158			217	1877.2
159			218	1889.0
160			219	1900.7
161			220	1912.5
162			221	1924.2
163			222	1936.0
164			223	1947.7
165			224	1959.5
166			225	1971.2
167			226	1983.0
168			227	1994.7
169			228	2006.5
170			229	2018.2
171			230	2030.0
172			231	2041.7
173			232	2053.5
174			233	2065.2
175			234	2077.0
176			235	2088.7
177			236	2100.5
178			237	2112.2
179			238	2124.0
180			239	2135.7
181			240	2147.5
182			241	2159.2
183			242	2171.0
184			243	2182.7
185			244	2194.5
186			245	2206.2
187			246	2218.0
188			247	2229.7
189			248	2241.5
190			249	2253.2
191			250	2265.0
192			251	2276.7
193			252	2288.5
194			253	2300.2
195			254	2312.0
196			255	2323.7
197			256	2335.5
198			257	2347.2
199			258	2359.0
200			259	2370.7
201			260	2382.5
202			261	2394.2
203			262	2406.0
204			263	2417.7
205			264	2429.5
206			265	2441.2
207			266	2453.0
208			267	2464.7
209			268	2476.5
210			269	2488.2
211			270	2500.0
212			271	2511.7
213			272	2523.5
214			273	2535.2
215			274	2547.0
216			275	2558.7
217			276	2570.5
218			277	2582.2
219			278	2594.0
220			279	2605.7
221			280	2617.5
222			281	2629.2
223			282	2641.0
224			283	2652.7
225			284	2664.5
226			285	2676.2
227			286	2688.0
228			287	2699.7
229			288	2711.5
230			289	2723.2
231			290	2735.0
232			291	2746.7
233			292	2758.5
234			293	2770.2
235			294	2782.0
236			295	2793.7
237			296	2805.5
238			297	2817.2
239			298	2829.0
240			299	2840.7
241			300	2852.5
242			301	2864.2
243			302	2876.0
244			303	2887.7
245			304	2899.5
246			305	2911.2
247			306	2923.0
248			307	2934.7
249			308	2946.5
250			309	2958.2
251			310	2970.0
252			311	2981.7
253			312	2993.5
254			313	3005.2
255			314	3017.0
256			315	3028.7
257			316	3040.5
258			317	3052.2
259			318	3064.0
260			319	3075.7
261			320	3087.5
262			321	3099.2
263			322	3111.0
264			323	3122.7
265			324	3134.5
266			325	3146.2
267			326	3158.0
268			327	3169.7
269			328	3181.5
270			329	3193.2
271			330	3205.0
272			331	3216.7
273			332	3228.5
274			333	3240.2
275			334	3252.0
276			335	3263.7
277			336	3275.5
278			337	3287.2
279			338	3299.0
280			339	3310.7
281			340	3322.5
282			341	3334.2
283			342	3346.0
284			343	3357.7
285			344	3369.5
286			345	3381.2
287			346	3393.0
288			347	3404.7
289			348	3416.5
290			349	3428.2
291			350	3440.0
292			351	3451.7
293			352	3463.5
294			353	3475.2
295			354	3487.0
296			355	3498.7
297			356	3510.5
298			357	3522.2
299			358	3534.0
300			359	3545.7
301			360	3557.5
302			361	3569.2
303			362	3581.0
304			363	3592.7
305			364	3604.5
306			365	3616.2
307			366	3628.0
308			367	3639.7
309			368	3651.5
310			369	3663.2
311			370	3675.0
312			371	3686.7
313			372	3698.5
314			373	3

UNITED REAL ESTATE & AUCTION CO
Selling Agents
Raleigh, N.C.

Map of Part of
THE JACOB MAYNARD PLACE
Cary Township - Wake Co. N.C.
April 1925 Scale 1" = 100'
P. A. Bau Civil Eng'r
Raleigh, N.C.

Note: Outside lines were taken from map made by
W. H. Blanchard Jan. 1923 and bearings changed to date.



ACTUAL DATE UNKNOWN

Book 1924 page 83. 2

To Raleigh

To Cary & Durham
N18.15E

J. S. Chamberlain

The Maynard Lots

Olives Pine Highway No 50

State Road Highway No 50

Iron stake

Iron stake

Iron stake

N18.15E

③

②

①

6.09A

5.28A

6.17A

N6.0E 1810

N3.45E 1820

N3.45E 1698

S8.45W 1398

dog wood tree

Elm tree

Walnut Creek

stake

stake

stake

stake