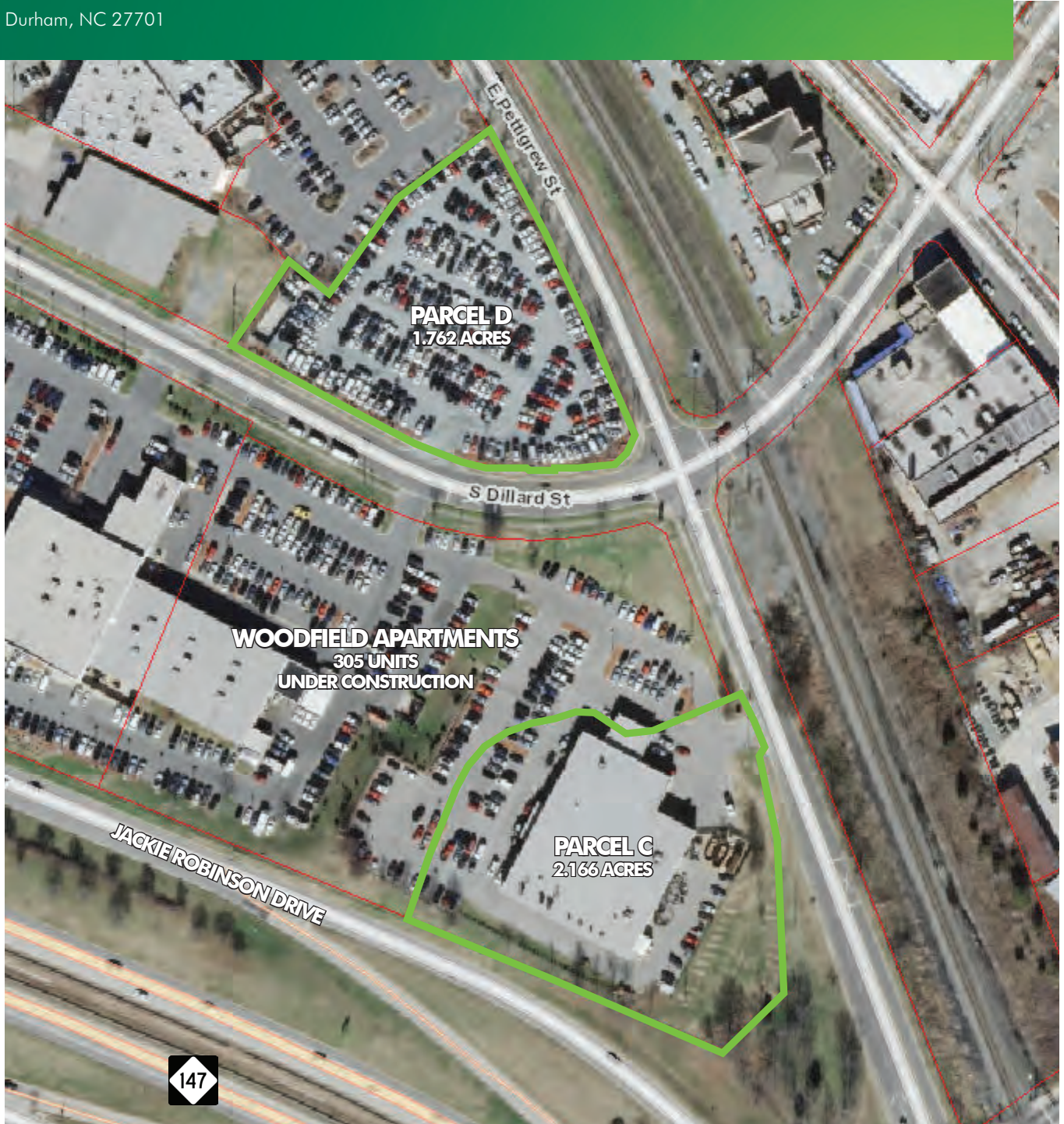


FOR SALE

DOWNTOWN DURHAM HIGH-DENSITY DEVELOPMENT OPPORTUNITY

464 & 510 E. PETTIGREW STREET

Durham, NC 27701



www.cbre.com/raleigh

CBRE | Raleigh

Part of the CBRE affiliate network

FOR SALE

464 & 510 E. PETTIGREW STREET

Durham, NC 27701



PROPERTY FEATURES

- + Two vacant parcels in Downtown Durham near the Durham Bulls Athletic Park and the American Tobacco Campus
- + Zoned Downtown Design - Core (DD-C)
- + The Downtown Design district is established to encourage intense development and pedestrian activity through regulations appropriate to the downtown area. It focuses on the form of the private and public realm instead of an use and intensity. The standards encourage a vital downtown economy that enhances Durham's position as a commercial, cultural and entertainment hub of the region while increasing livability. The DD district is intended to work in tandem with the Downtown Durham Master Plan and updates. For more information on the DD-C zoning, click [here](#)
- + The Downtown Durham Master Plan describes the parcels as being located in the Government Services District. The Plan calls for the lots to be developed as mixed use - office, residential and retail. For more information on the Downtown Durham Master Plan, click [here](#)
- + City of Durham water and sewer service available
- + The parcels are located in Downtown Durham, just east of the American Tobacco Campus and the Durham Bulls Athletic Park. Adjacent developments include Woodfield Investments' 305-unit multifamily development, the new Venable Center, a 90,000 square foot office building, the new Durham County Judicial Center and the new Durham County Human and Health Services Building. The properties have excellent access onto NC Highway 147 and US Highway 15/501.
- + For due diligence information, click [here](#)

Address	PIN#	Size	Zoning	Pricing
464 E. Pettigrew Street	0831-09-05-0593	1.762 Acres	Downtown Design - Core (DD-C)	\$4,757,400
510 E. Pettigrew Street	0831-13-04-2968	2.166 Acres	Downtown Design - Core (DD-C)	\$5,848,200



DEMOGRAPHICS

	1 Mile	3 Miles	5 Miles
2016 POPULATION	14,036	90,316	188,711
EST. POPULATION GROWTH RATE (2016-2020)	2.30%	1.59%	1.84%
2016 AVERAGE HOUSEHOLD INCOME	\$38,078	\$50,964	\$61,196

TRAFFIC COUNTS

NC HIGHWAY 147 @ FAYETTEVILLE ROAD	78,000 VPD
ROXBORO ROAD @ E. DILLARD STREET	11,070 VPD

FOR SALE 464 & 510 E. PETTIGREW STREET

Durham, NC 27701



ECONOMIC CENTER FOR THE FUTURE

Durham is at the center of our nation's new high-tech job growth.

The parcels are just two miles from the Duke University/Duke Medical "Eds and Meds" Corridor.

The Property is just one block from American Tobacco Campus, home to the Durham Bulls AAA baseball team, the Durham Performing Arts Center, restaurants, shops, and night spots.

#4

**CITY WITH THE HIGHEST
CONCENTRATION OF TECH
JOBS IN THE U.S**

#5

**BEST PLACE FOR STEM (SCIENCE,
TECHNOLOGY, ENGINEERING,
AND MATH) GRADUATES**

#3

**METRO FOR ECONOMIC
GROWTH**

#4

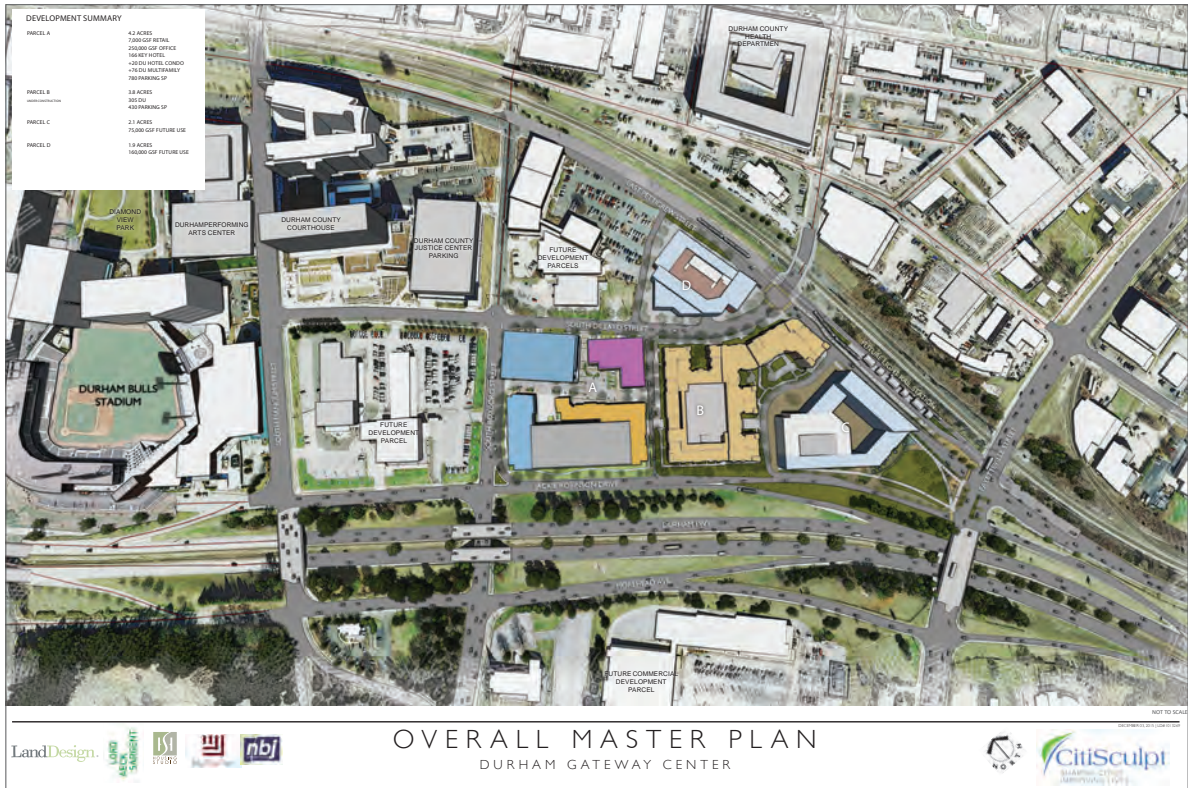
**METRO FOR VENTURE CAPITAL
INVESTMENT PER CAPITA**

FOR SALE 464 & 510 E. PETTIGREW STREET

Durham, NC 27701



MASTER PLAN

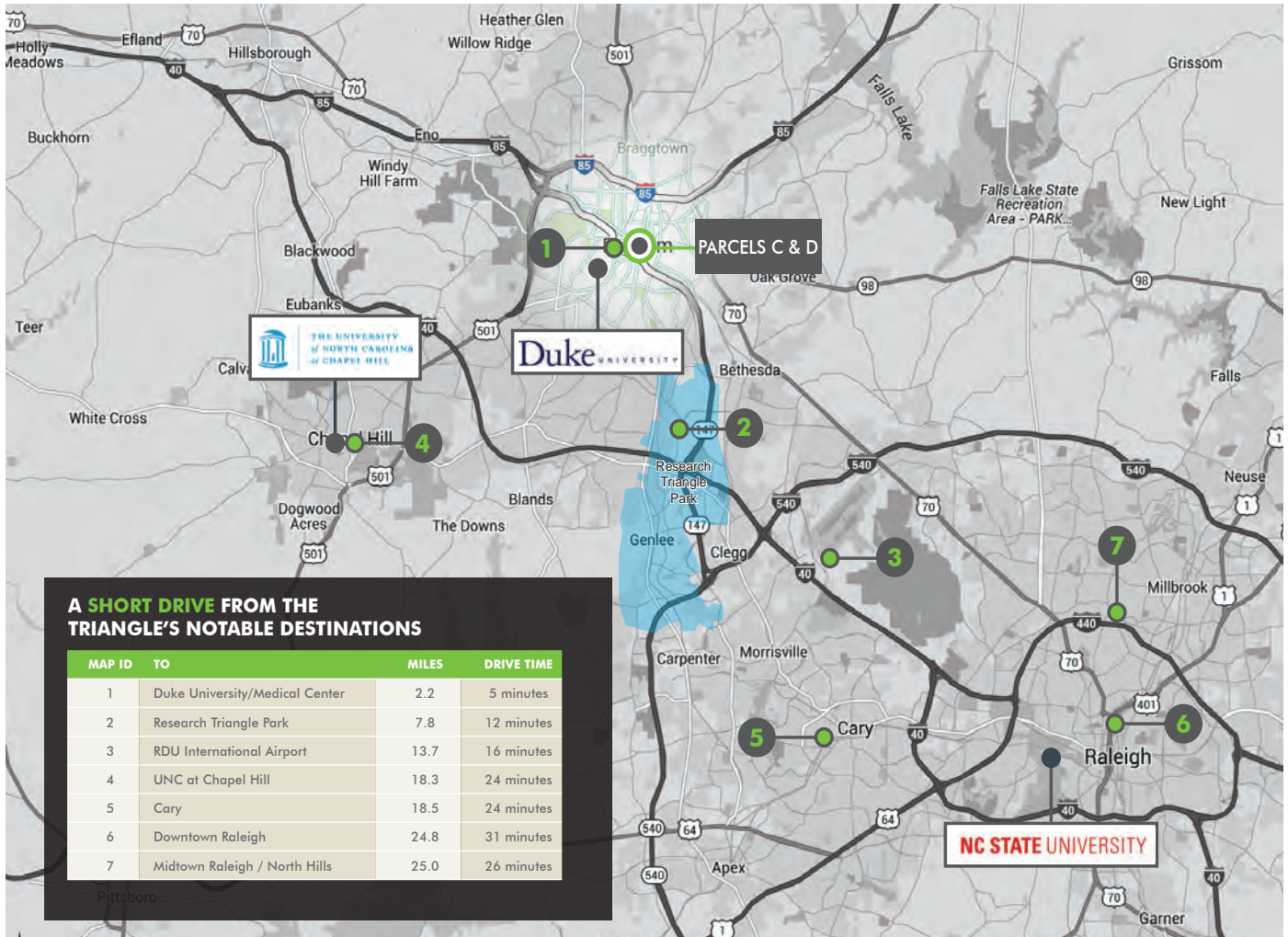


POTENTIAL RENDERING



FOR SALE 464 & 510 E. PETTIGREW STREET

Durham, NC 27701



CONTACT US

CHESTER F. ALLEN, CCIM

Senior Vice President
+1 919 831 8190
chester.allen@cbre-raleigh.com

© 2017 CB Richard Ellis - Raleigh LLC. The information contained in this document has been obtained from sources believed reliable. While CB Richard Ellis - Raleigh LLC does not doubt its accuracy, CB Richard Ellis - Raleigh LLC has not verified it and makes no guarantee, warranty or representation about it. It is your responsibility to independently confirm its accuracy and completeness. Any projections, opinions, assumptions or estimates used are for example only and do not represent the current or future performance of the property. The value of this transaction to you depends on tax and other factors which should be evaluated by your tax, financial and legal advisors. You and your advisors should conduct a careful, independent investigation of the property to determine to your satisfaction the suitability of the property for your needs.

Photos herein are the property of their respective owners and use of these images without the express written consent of the owner is prohibited.

www.cbre.com/raleigh

CBRE | Raleigh

Part of the CBRE affiliate network