

OFFICE CONDO
FOR SALE



PHOENIX
COMMERCIAL PROPERTIES



SOUTHPARK AT 54 PROFESSIONAL CENTER

5015 SOUTHPARK DRIVE, SUITE 210

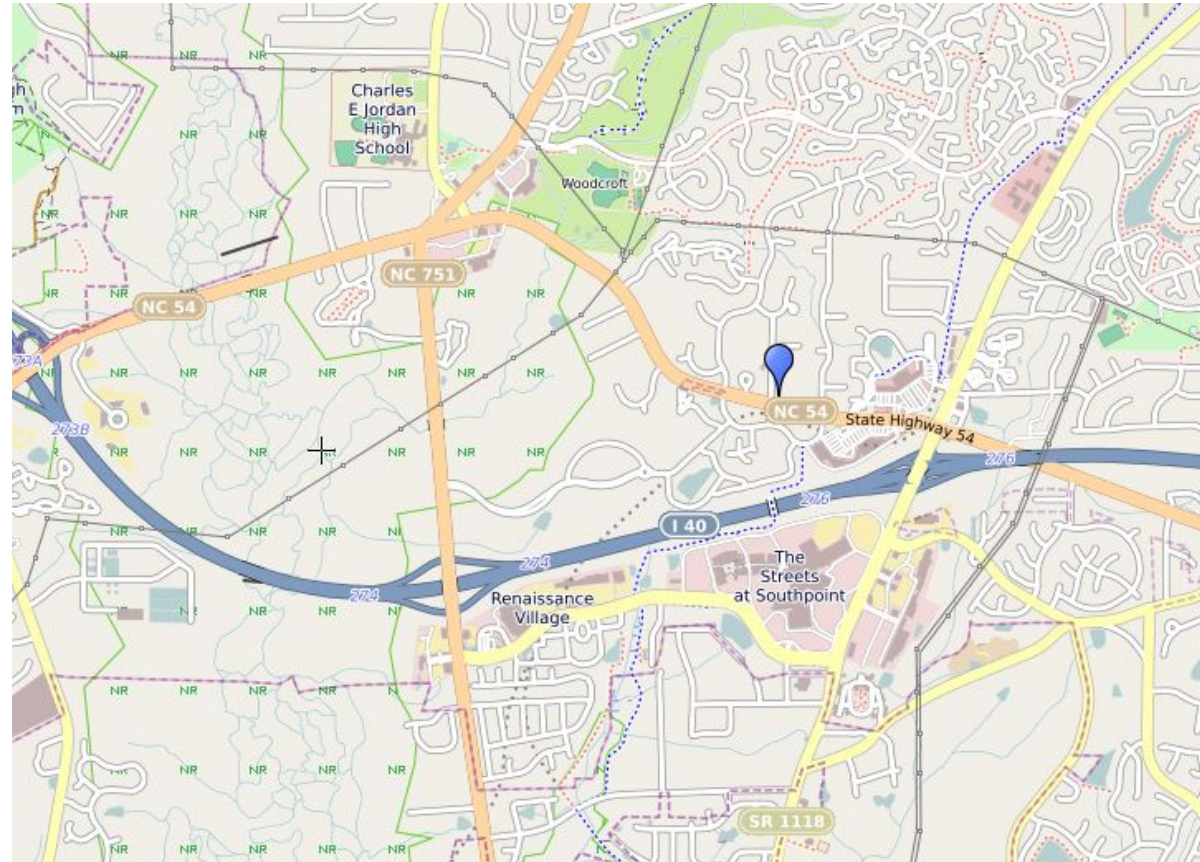
DURHAM, NORTH CAROLINA 27713

5015 SOUTHPARK DRIVE, SUITE 210

OFFICE CONDO FOR SALE

PROPERTY OVERVIEW

- ▶ **SUITE 210:** +/- 894 SF
- ▶ **SALES PRICE:** \$169,860
- ▶ **BUILDING OVERVIEW:**
 - ▶ Two-story brick frame
- ▶ **PARKING RATIO:** 4/1,000 SF
- ▶ **LOCATION:**
 - ▶ Excellent access to I-40, Chapel Hill, and RDU International airport.
 - ▶ Conveniently located near The Streets at Southpoint, Sprouts Market, restaurants, and other retail.
- ▶ **AVAILABLE FOR OCCUPANCY:**
 - ▶ January 1, 2019
- ▶ **EXCELLENT INVESTMENT OR OWNER OCCUPANCY**



For more information, please contact:

KIM MILLS | Vice President

919.948.7232 (Direct)

919.418.8456 (Cell)

kim@phoenixcommercialnc.com



PHOENIX
COMMERCIAL PROPERTIES

309 West Millbrook Rd., Ste. 141

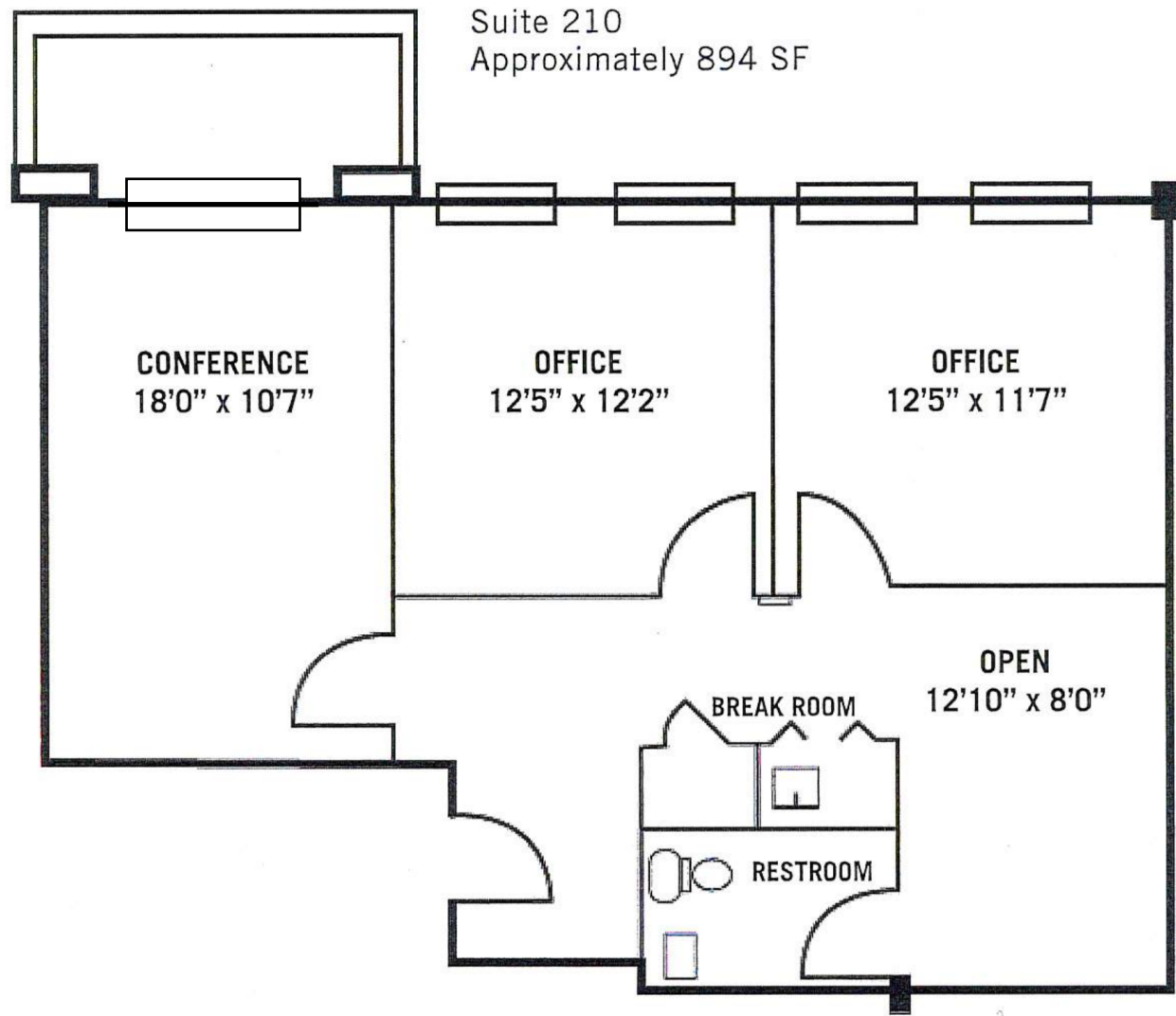
Raleigh NC 27609

www.phoenixcommercialnc.com

919.896.6497

5015 SOUTHPARK DRIVE, SUITE 210

FLOOR PLAN



For more information, please contact:

KIM MILLS | Vice President

919.948.7232 (Direct)

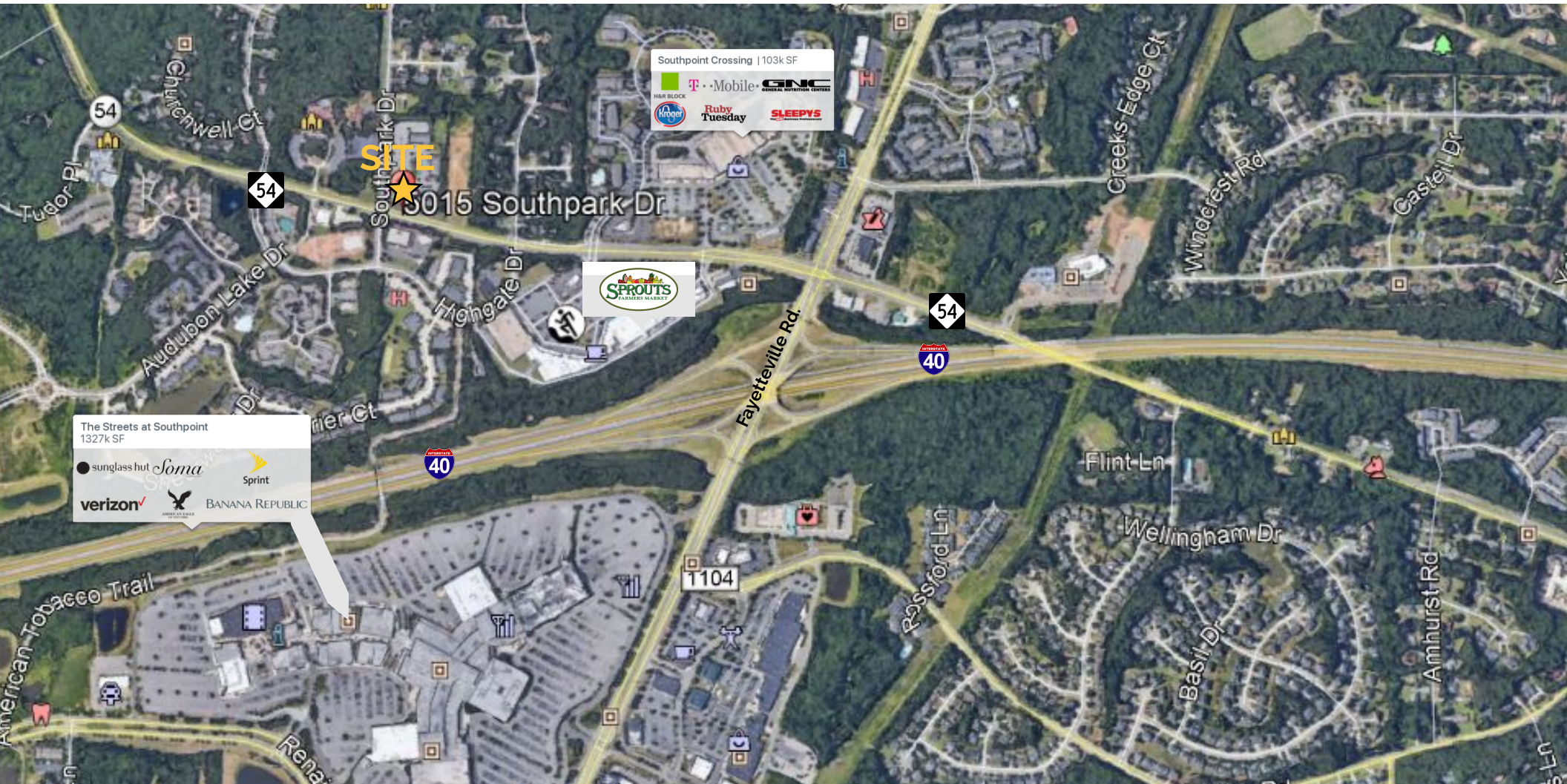
919.418.8456 (Cell)

kim@phoenixcommercialinc.com

www.phoenixcommercialinc.com

919.896.6497

5015 SOUTHPARK DRIVE, SUITE 210 OVERVIEW MAP



For more information, please contact:

KIM MILLS | Vice President

919.948.7232 (Direct)

919.418.8456 (Cell)

kim@phoenixcommercialinc.com

www.phoenixcommercialinc.com

919.896.6497