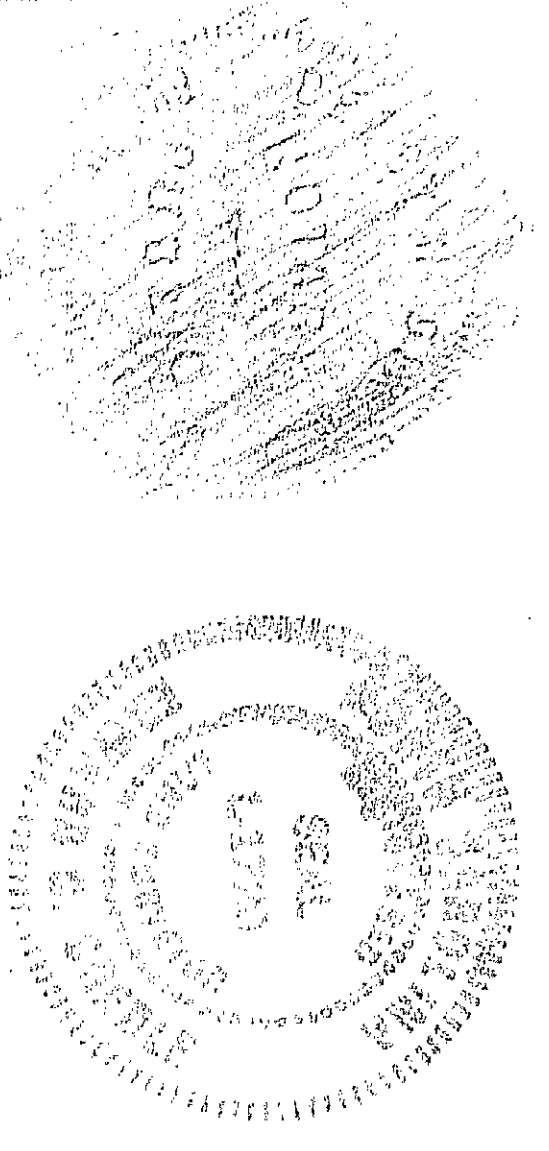


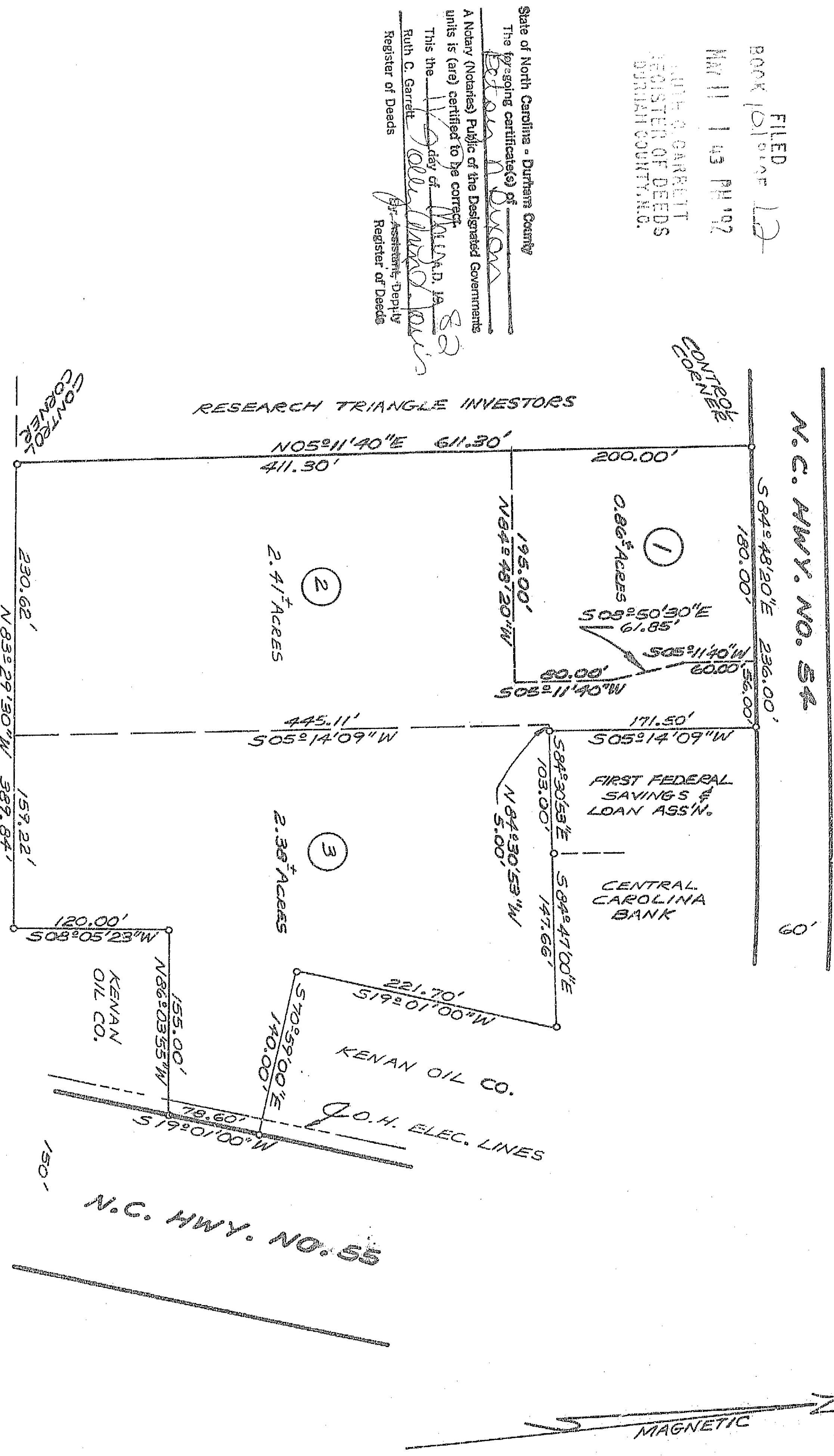
FILED
BOOK 101 PAGE 12
MAY 11 1 43 PM 1982
RUTH C. GARRETT
REGISTER OF DEEDS
DURHAM COUNTY, N.C.

State of North Carolina - Durham County
The foregoing certificate(s) of Edmund P. Beulle
A Notary (Notaries) Public of the Designated Government
units is (are) certified to be correct.
This the 15 day of April, 1982
Ruth C. Garrett
Register of Deeds
Edmund P. Beulle
Notary Public

Edmund P. Beulle
Notary Public
April 15, 1982
Notary Public
Edmund P. Beulle
Notary Public
April 15, 1982
Notary Public
Edmund P. Beulle
Notary Public
April 15, 1982
Notary Public



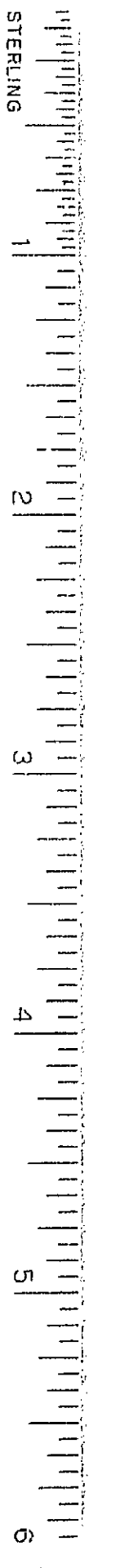
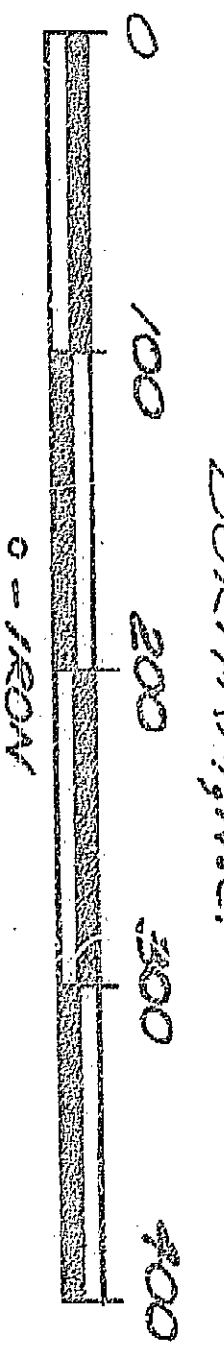
THIS PLAT HAS BEEN CERTIFIED
FOR RECORDATION BY THE DURHAM
COUNTY PLANNING DEPARTMENT
BY: Victor J. Johnson
DATE: 5/7/82
APPROVAL VOID 60 DAYS FROM SAID
DATE



NOTE:
THE PARCEL PLATTED IS A PORTION OF
THE OVER-ALL PLANNED COMMERCIAL
DEVELOPMENT AS APPROVED BY THE
DURHAM COUNTY PLANNING COM-
MISSION SEPT., 1980

PROPERTY OF
**EXECUTIVE PARK DEVELOPERS,
A N.C. LIMITED PARTNERSHIP**

TRIANGLE TS. DURHAM CO, N.C.
1" = 100'
4-14-82
CREDLE ENGINEERING CO., INC.
DURHAM, N.C.



101-12

101-12