



**FOR SALE  
RALEIGH**

# 4615 Leesville Road

± 13.5 acres available for sale near the intersection of Highway 70 and Leesville Road.



Location	4615 and 4619 Leesville Road Durham, NC 27703
Acreage	± 13.5 acres
Sale Price	\$395,000
Parcel #	164661 and 218026
Traffic Counts	36,000 cars per day on Highway 70 4,800 cars per day on Leesville Road
Zoning	Rural Residential (RR)
Features	<ul style="list-style-type: none"> <li>Property includes a 4 bedroom ranch style house</li> <li>Well and septic on property</li> <li>240' of road frontage on Leesville Road</li> </ul>
Close Proximity To	<ul style="list-style-type: none"> <li>Durham, Raleigh, I-540, RDU Airport, Research Triangle Park and Brier Creek Shopping Center</li> </ul>

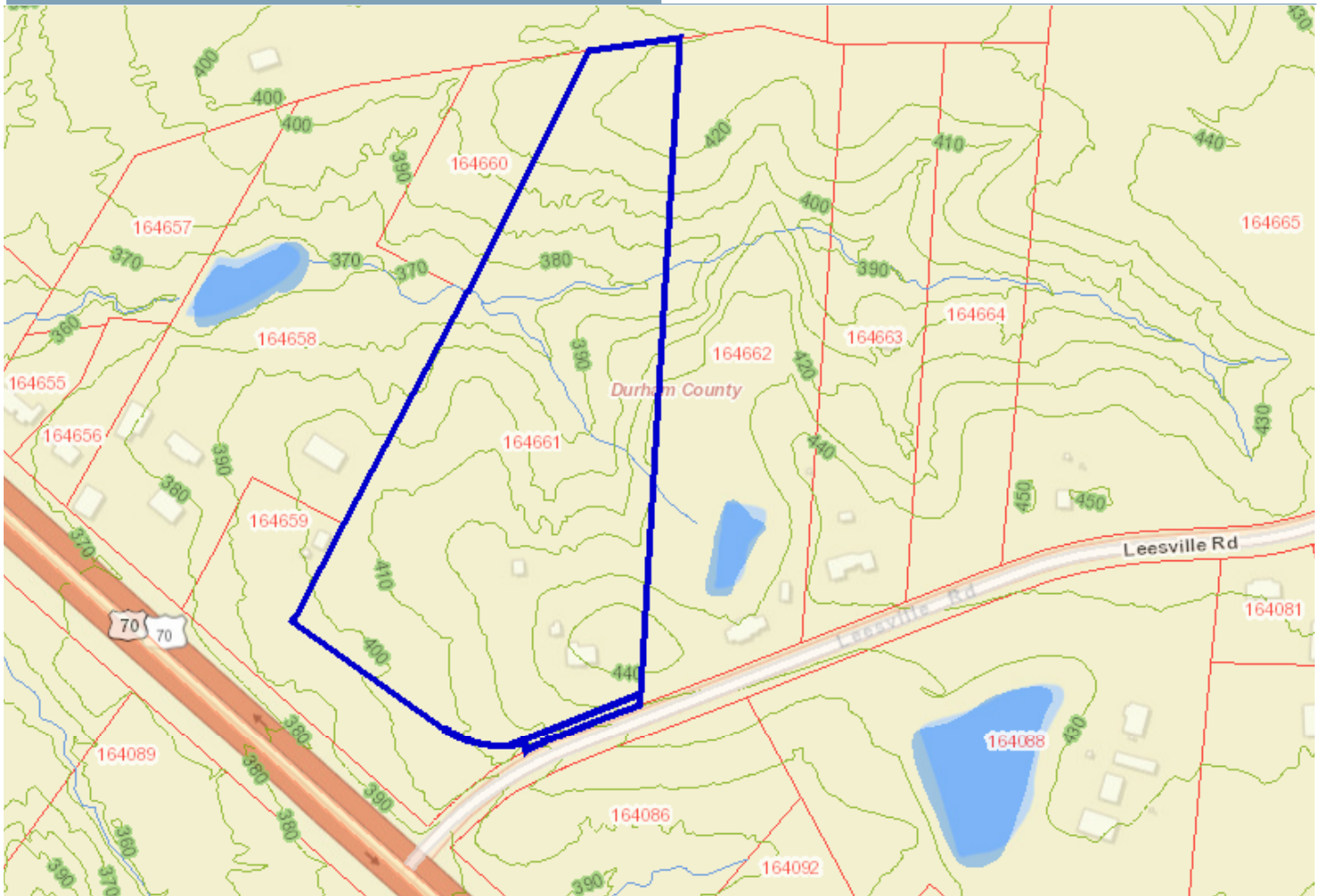
JIM BOYD | Direct: 919.287.2125 | Mobile: 919.612.0588 | jboyd@realestateassoc.com



3333 Durham-Chapel Hill Boulevard, Suite C, Durham, NC 27707 | realestateassoc.com | 919.489.2000  
No warranty or representation, expressed or implied, is made to the accuracy of the information contained herein, and same is submitted subject to errors, omissions, change of price, rental, or other conditions, withdrawal without notice, and to any special listing conditions imposed by principals. REV 05/01/2015



# Topography and Aerial



JIM BOYD | Direct: 919.287.2125 | Mobile: 919.612.0588 | [jboyd@realestateassoc.com](mailto:jboyd@realestateassoc.com)



3333 Durham-Chapel Hill Boulevard, Suite C, Durham, NC 27707 | [realestateassoc.com](http://realestateassoc.com) | 919.489.2000  
No warranty or representation, expressed or implied, is made to the accuracy of the information contained herein, and same is submitted subject to errors, omissions, change of price, rental, or other conditions, withdrawal without notice, and to any special listing conditions imposed by principals. REV 05/01/2015

