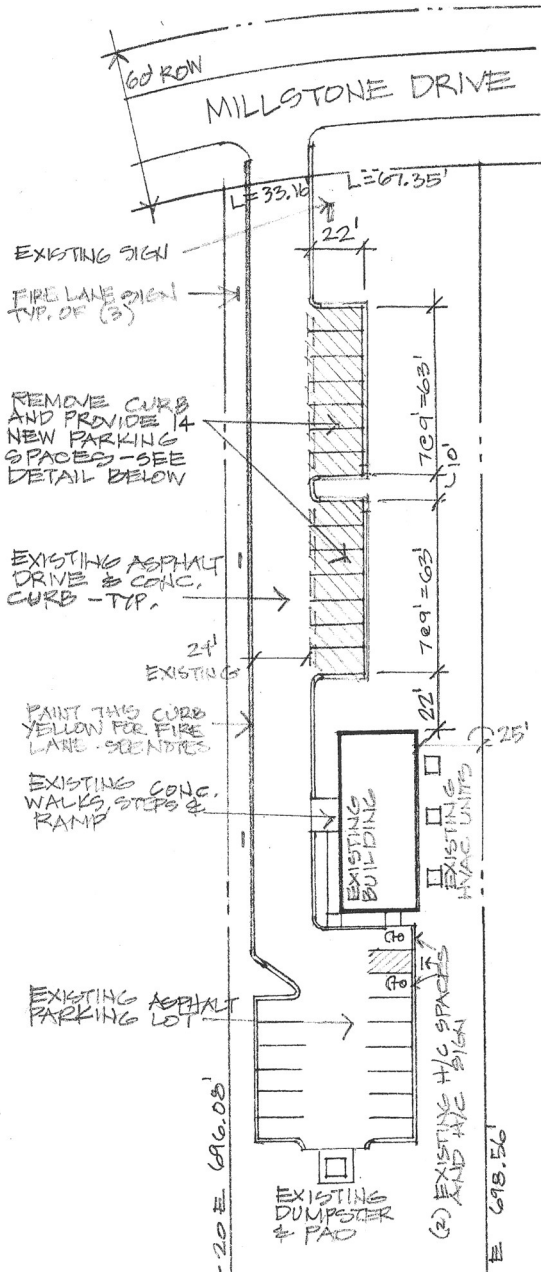




FOR LEASE & FOR SALE 410 MILLSTONE DRIVE Old Mill Business Park, Hillsborough, NC

- Attractive, well-maintained ±3,500 SF office building in Old Mill Business Park, Hillsborough, built 2002. Prime location between I-40 and I-85 near new UNC Hospital. Parking (27) in front and rear of building. Public water and sewer.
- Approx. 2,388 SF on main floor, 1,112 on second floor. Main floor divided into four small tenant suites, second floor has one tenant suite.
- Legal—PIN #9873-17-9626; Deed Book 5614/214 Plat Book 87/62 lot 16C-3
- 1.6 acre parcel with concept plans already drawn for a possible second building toward the rear of the property.
- For Lease: \$3,900 /mo + utilities and janitorial
- For Sale: \$399,000



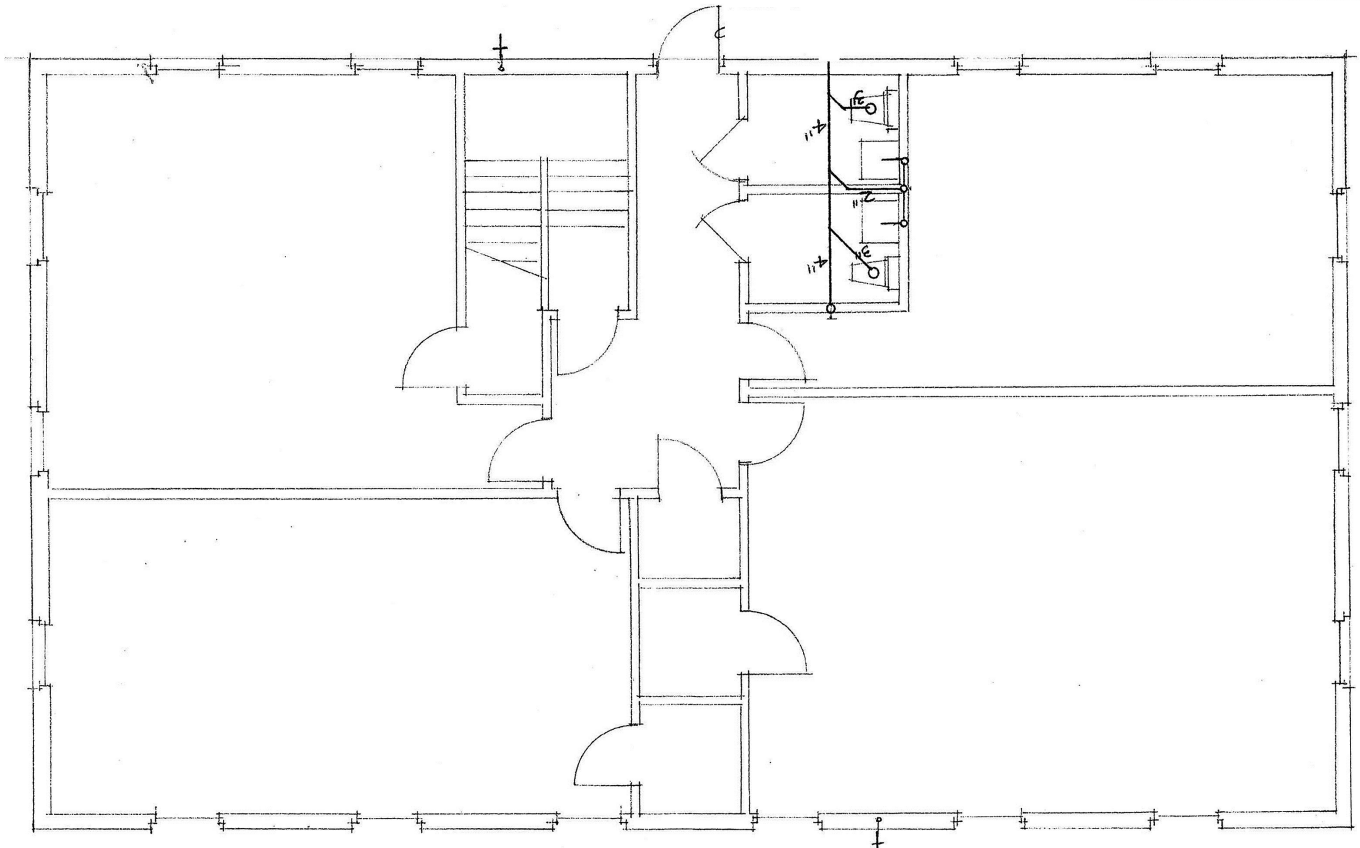
Please contact:

MARK O'NEAL, CCIM

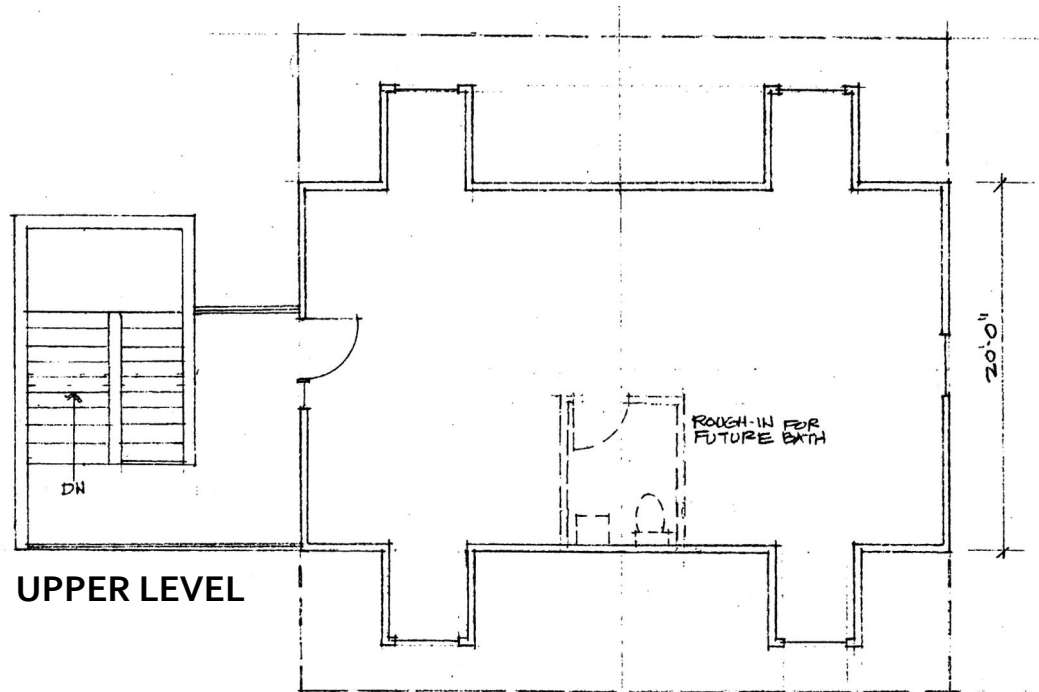
marko@pickett-sprouse.com

(919)493-0395

Visit us at pickett-sprouse.com



GROUND FLOOR



UPPER LEVEL

Mark O'Neal, CCIM marko@pickett-sprouse.com | 919-287-3051

Office: (919)493-0395 | Visit us at pickett-sprouse.com