

**Orange County North Carolina**

290131

**MAILING ADDRESS**  
EFLAND REAL PROPERTY LLC  
708 HWY 57  
HILLSBOROUGH NC 27278

Total Assessed Value  
**\$18,500**

**KEY INFORMATION**

Tax Year	<b>2021</b>		
Parcel ID	<b>9844781300</b>	Township	<b>3 - CHEEKS</b>
Land Size	<b>1.00</b>	Land Units	<b>AC</b>
Rate Code	<b>03</b>		
District Codes	<b>FB Efland FD, G0 County</b>		
Property LUC	<b>Residential-Unimproved</b>		
Neighborhood	<b>3005 - 3RICHMND</b>		
Legal Description	<b>S/S 70</b>		
Exempt Type	<b>-</b>		

**APPRAISAL DETAILS**

Total Land	<b>\$18,500</b>
Ag Credit	<b>-</b>
Land	<b>\$18,500</b>
Building	<b>\$0</b>
Yard Items	<b>\$0</b>
Market Total	<b>\$18,500</b>
Total Assessed	<b>\$18,500</b>

**RESIDENTIAL**

No building data to display.

**MISC IMPROVEMENTS**

IMPROVEMENT TYPE	UNITS/SQ FT	EST YEAR BUILT	APPRAISED VALUE
No items to display			

**SALES**

SALE DATE	SALE PRICE	DEED BOOK	DEED PAGE	INSTRUMENT TYPE	GRANTOR
05/01/1972	\$500	235	941		-

**YARD ITEMS**

DESCRIPTION	TOTAL UNITS	YEAR BUILT	LENGTH	WIDTH	HEIGHT
No items to display					

**LAND**

UNIT / SOIL TYPE	DESCRIPTION	USE CODE	ACRES / LOTS	VALUE
AC_9	Acres Type 9	SITE	1	\$18,500

**VALUE HISTORY**

YEAR	TOTAL MARKET VALUE
2020	\$18,000
2019	\$18,000
2018	\$18,000
2017	\$18,000
2016	\$23,421
2015	\$23,421
2014	\$23,421
2013	\$23,421
2012	\$23,421
2011	\$23,421



No Photo Available



#### Disclaimer

Orange County Assessor's Office makes every effort to produce the most accurate information possible. **No warranties, expressed or implied, are provided for the data herein, its use or interpretation.**

**Orange County North Carolina**

290132

**MAILING ADDRESS**  
EFLAND REAL PROPERTY LLC  
708 HWY 57  
HILLSBOROUGH NC 27278

Total Assessed Value  
**\$79,400**

**KEY INFORMATION**

Tax Year	<b>2021</b>		
Parcel ID	<b>9844688078</b>	Township	<b>3 - CHEEKS</b>
Land Size	<b>10.05</b>	Land Units	<b>AC</b>
Rate Code	<b>03</b>		
District Codes	<b>G0 County, FB Efland FD</b>		
Property LUC	<b>Residential-Unimproved</b>		
Neighborhood	<b>3005 - 3RICHMND</b>		
Legal Description	<b>S/S OF HWY 70</b>		
Exempt Type	<b>-</b>		

**APPRAISAL DETAILS**

Total Land	<b>\$79,400</b>
Ag Credit	<b>-</b>
Land	<b>\$79,400</b>
Building	<b>\$0</b>
Yard Items	<b>\$0</b>
Market Total	<b>\$79,400</b>
Total Assessed	<b>\$79,400</b>

**RESIDENTIAL**

No building data to display.

**MISC IMPROVEMENTS**

IMPROVEMENT TYPE	UNITS/SQ FT	EST YEAR BUILT	APPRAISED VALUE
No items to display			

**SALES**

SALE DATE	SALE PRICE	DEED BOOK	DEED PAGE	INSTRUMENT TYPE	GRANTOR
05/29/1972	\$6,000	235	942		-

**YARD ITEMS**

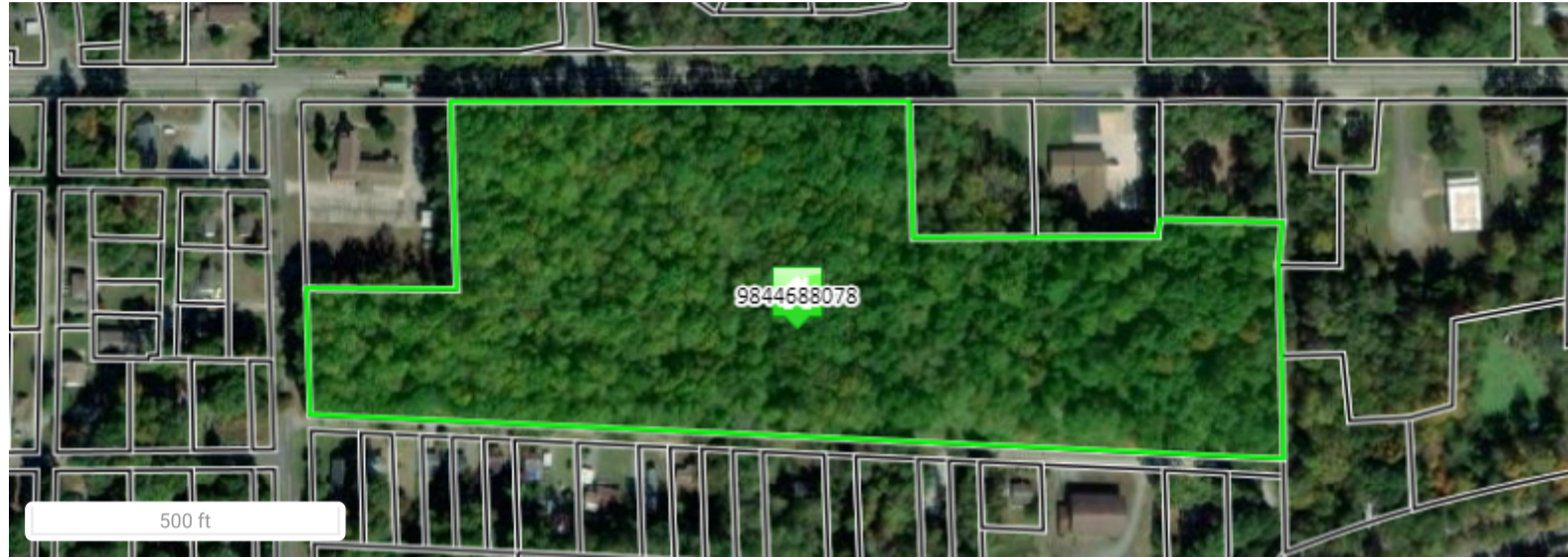
DESCRIPTION	TOTAL UNITS	YEAR BUILT	LENGTH	WIDTH	HEIGHT
No items to display					

**LAND**

UNIT / SOIL TYPE	DESCRIPTION	USE CODE	ACRES / LOTS	VALUE
AC_9	Acres Type 9	SITE	10.05	\$79,400

**VALUE HISTORY**

YEAR	TOTAL MARKET VALUE
2020	\$77,200
2019	\$77,200
2018	\$77,200
2017	\$77,200
2016	\$122,359
2015	\$122,359
2014	\$122,359
2013	\$122,359
2012	\$122,359
2011	\$122,359



No Photo Available



---

#### Disclaimer

Orange County Assessor's Office makes every effort to produce the most accurate information possible. **No warranties, expressed or implied, are provided for the data herein, its use or interpretation.**