

LINE	DIRECTION	DISTANCE
L1	N 00°51'05" W	292.08'
L2	N 00°51'05" W	5.00'
L3	N 00°51'05" W	861.77'
L4	N 37°10'29" E	9.99'
L5	S 85°07'49" E	117.80'
L6	S 01°33'25" W	78.22'
L7	N 84°48'58" E	62.25'
L8	S 77°54'47" E	65.68'
L9	S 55°30'40" E	45.04'
L10	N 79°19'56" E	103.81'
L11	S 85°08'40" E	84.72'
L12	S 62°25'01" E	86.11'
L13	S 09°19'25" E	107.06'
L14	S 19°25'05" E	160.00'
L15	S 01°02'36" W	189.11'
L16	S 01°02'36" W	5.00'
L17	S 01°02'36" W	272.86'
L18	N 88°57'24" W	7.00'
L19	N 84°12'49" W	131.66'
L20	S 86°19'26" W	223.18'
L21	N 89°08'57" E	336.99'
L22	N 89°08'57" E	314.33'
L23	S 00°10'25" E	283.37'

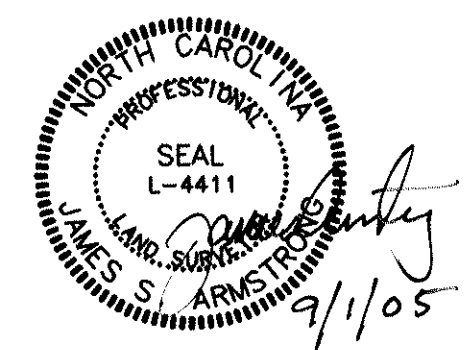
CURVE	RADIUS	LENGTH	CHORD	BEARING
C1	532.50'	93.82'	93.70'	S14°22'15"E
C2	467.50'	166.95'	166.07'	N09°11'15"W
C3	30.00'	49.61'	44.15'	N48°24'53"E
C4	1150.00'	128.84'	128.77'	N87°25'23"W
C5	2250.00'	8.74'	8.74'	S89°15'23"W
C6	2250.00'	110.79'	110.78'	S87°44'04"W

LINE	DIRECTION	DISTANCE
EL1	S 00°51'05" E	5.65'
EL2	N 85°13'29" E	65.14'
EL3	N 85°57'20" E	100.66'
EL4	N 86°52'17" E	100.39'
EL5	N 88°22'53" E	50.53'
EL6	N 89°25'02" E	51.29'
EL7	S 88°11'09" E	51.61'
EL8	S 84°39'31" E	50.71'
EL9	S 84°25'02" E	99.93'
EL10	S 84°06'19" E	39.85'
EL11	N 01°02'36" E	5.48'
EL12	N 01°02'36" E	165.35'
EL13	N 03°11'08" E	112.49'
EL14	N 03°11'08" E	74.77'
EL15	S 01°02'36" W	74.63'
EL16	N 01°02'36" E	124.48'
EL17	S 01°02'36" W	5.23'
EL19	N 75°03'42" E	32.25'
EL20	S 15°26'40" E	49.03'
EL21	S 86°04'54" E	30.27'
EL22	S 48°40'34" E	14.14'
EL23	S 88°42'06" E	176.87'
EL24	N 82°59'55" E	57.03'
EL25	N 53°43'53" E	34.55'
EL26	S 88°18'41" E	90.15'
EL27	N 03°51'00" E	20.00'
EL28	S 85°14'18" E	38.66'
EL29	S 05°40'23" W	30.00'
EL30	S 70°12'04" E	103.24'
EL31	S 84°12'49" E	35.00'
EL32	N 42°18'55" E	33.60'
EL33	S 00°51'05" E	90.81'
EL34	S 13°06'40" E	73.79'
EL35	S 65°50'38" E	142.72'
EL36	S 13°53'23" E	11.95'
EL37	S 13°53'23" E	235.02'
EL38	S 13°53'23" E	14.92'

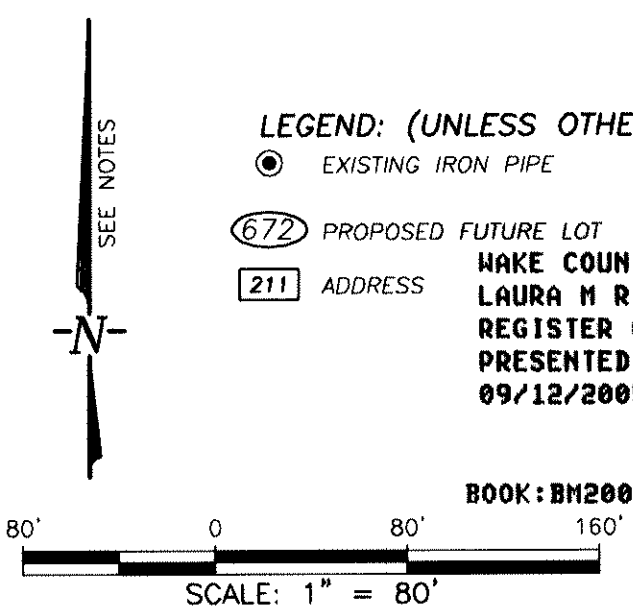
LINE	DIRECTION	DISTANCE
EL39	S 27°16'55" E	89.55'
EL40	S 27°16'55" E	73.68'
EL41	S 08°49'49" E	116.24'
EL42	S 08°49'49" E	79.73'
EL43	S 21°26'48" W	65.97'
EL44	S 21°26'48" W	14.10'
EL45	N 68°33'12" W	20.00'
EL46	N 21°26'48" E	5.90'
EL47	N 21°26'48" E	68.76'
EL48	N 08°49'49" W	187.31'
EL49	N 27°16'55" W	183.92'
EL50	N 13°53'23" W	237.41'
EL51	N 65°50'38" W	136.54'
EL52	N 13°06'40" W	83.90'
EL53	S 16°35'57" E	1.41'
EL54	N 73°24'03" E	19.95'
EL55	N 77°00'18" E	86.54'
EL56	S 18°41'56" E	43.12'
EL57	S 08°50'05" E	86.80'
EL58	S 81°09'55" W	2.45'
EL59	S 12°20'15" W	107.57'
EL60	S 27°16'55" E	69.73'
EL61	S 08°49'49" E	113.47'
EL62	S 42°19'26" E	54.92'
EL63	S 23°33'55" E	116.63'
EL64	S 42°19'26" E	57.64'
EL65	S 23°33'55" E	104.95'
EL66	N 12°20'15" E	107.03'
EL67	S 81°09'55" W	68.31'
EL68	N 89°08'57" E	92.66'
EL69	N 00°10'33" W	74.46'
EL70	S 89°49'27" W	54.49'
EL71	S 00°10'25" E	74.00'
EL72	N 00°10'33" W	61.73'
EL73	S 89°49'27" W	40.86'
EL74	N 00°08'52" W	20.00'
EL75	N 89°49'27" E	60.85'
EL76	S 00°10'33" E	82.09'
EL77	N 04°02'49" E	51.99'
EL78	N 85°57'11" E	20.00'
EL79	S 04°02'49" E	52.12'
EL80	S 86°19'26" W	54.78'
EL81	S 86°19'26" W	20.00'
EL82	S 86°19'26" W	148.39'
EL83	N 12°20'15" E	107.03'
EL84	S 81°09'55" W	68.31'
EL85	S 19°25'05" E	79.04'
EL86	S 19°25'05" E	21.92'
EL87	S 19°25'05" E	59.04'
EL88	N 89°08'57" E	21.68'
EL89	N 89°08'57" E	187.18'
EL90	S 89°08'57" W	328.18'

CURVE	RADIUS	LENGTH	CHORD	BEARING
EC1	30.00'	49.66'	44.18'	N48°28'08"E
EC2	61.78'	104.02'	92.16'	N54°45'44"W
EC3	47.00'	21.56'	21.37'	N04°18'23"E
EC4	1150.00'	83.08'	83.06'	N86°16'59"W
EC5	2250.00'	8.74'	8.74'	S89°15'23"W
EC6	1150.00'	19.42'	19.42'	S89°51'05"W
EC7	1150.00'	20.00'	20.00'	N89°09'59"W
EC8	1150.00'	6.34'	6.34'	N88°30'37"W
EC9	47.00'	29.72'	29.23'	N63°03'06"E

NOW OR FORMERLY
 PANTHER CREEK RALEIGH
 LIMITED PARTNERSHIP
 DB 9707 PG 231
 P.I.N. 0735.01-05-8037



LEGEND: (UNLESS OTHERWISE DENOTED)
 ● EXISTING IRON PIPE
 (672) PROPOSED FUTURE LOT
 (211) ADDRESS
 MAKE COUNTY, NC 311
 LAURA M RIDDICK
 REGISTER OF DEEDS
 PRESENTED & RECORDED ON
 09/12/2005 AT 12:10:21



BOOK: BM2005 PAGE: 01807

RECORDED IN BOOK OF MAPS 2005, PAGE 1807, WAKE COUNTY

DATE:	07-01-2005	SCALE:	1" = 80'
DRAWN:	JSA	CHECKED:	JSA
SHEET:	2	OF	2
CAD FILE:	BD_05120	PROJECT NO.:	99232.00

