

20' PRIVATE STORM DRAIN EASEMENT  
0.463 ACRES

LINE	BEARING	DISTANCE	LINE	BEARING	DISTANCE
E31	N66°34'54"E	214.09'	E41	N34°38'08"E	56.47'
E32	N54°15'29"E	39.13'	E42	N82°01'53"E	63.50'
E33	N31°37'54"E	62.02'	E43	N59°16'04"E	105.35'
E34	S36°18'53"E	53.39'	E44	N52°37'16"E	123.05'
E35	S36°58'37"W	81.08'	E45	N36°58'37"E	63.40'
E36	S52°57'16"W	126.96'	E46	S36°18'53"E	39.13'
E37	S59°16'04"W	110.48'	E47	N31°37'54"E	61.46'
E38	N82°01'53"E	58.75'	E48	N54°15'29"E	59.90'
E39	S54°38'08"W	47.70'	E49	N66°34'54"E	209.20'
E40	S55°21'52"E	20.00'			

16' ACCESS EASEMENT  
0.100 ACRES

LINE	BEARING	DISTANCE	LINE	BEARING	DISTANCE
A14	S38°23'54"E	16.00'	A21	S74°33'30"W	60.26'
A15	N51°36'06"E	20.00'	A22	N29°10'17"E	56.04'
A16	N20°25'08"E	21.22'	A23	S28°35'08"W	39.90'
A17	N27°56'58"W	59.43'	A24	N27°56'58"W	58.02'
A18	S28°35'08"W	48.50'	A25	S20°25'08"W	32.87'
A19	N29°10'17"E	62.79'	A26	S51°36'06"E	24.46'
A20	N74°53'52"E	81.88'			

TOWN OF CARY WATER AND SANITARY SEWER EASEMENT  
4.362 ACRES

LINE	BEARING	DISTANCE	LINE	BEARING	DISTANCE
W1	N82°12'49"W	16.33'	W46	S72°24'01"E	46.81'
W2	N07°47'11"E	18.50'	W47	S05°23'59"E	8.63'
W3	S82°12'49"W	20.00'	W48	N55°51'36"E	9.92'
W4	S07°47'11"W	18.50'	W49	N34°35'53"W	0.97'
W5	S01°55'18"W	10.08'	W50	N86°58'40"W	20.54'
W6	S48°10'20"E	28.15'	W51	S37°00'11"E	53.01'
W7	N86°04'42"W	28.15'	W52	N82°25'56"W	5.17'
W8	S02°09'10"W	21.28'	W53	N55°51'36"E	10.07'
W9	N43°04'42"W	18.15'	W54	S09°14'55"W	16.26'
W10	N86°04'42"W	36.13'	W55	N00°24'41"W	32.16'
W11	N01°55'18"E	17.50'	W56	S00°24'41"E	20.21'
W12	S86°04'42"E	20.00'	W57	N01°55'18"E	6.50'
W13	S01°55'18"W	17.50'	W58	S72°24'01"E	14.86'
W14	S06°54'22"W	18.56'	W59	N53°41'07"E	4.85'
W15	N36°18'53"W	14.50'	W60	S83°44'46"E	41.87'
W16	N53°41'07"E	20.00'	W61	N84°58'02"E	18.89'
W17	N36°18'53"W	14.50'	W62	N05°01'58"W	20.00'
W18	N53°41'07"E	5.82'	W63	S84°58'02"W	13.22'
W19	N01°55'18"E	23.14'	W64	S28°15'14"W	34.69'
W20	N36°18'53"W	52.83'	W71	S36°18'53"E	37.24'

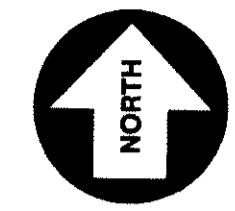
16' ACCESS EASEMENT  
0.112 ACRES

LINE	BEARING	DISTANCE	LINE	BEARING	DISTANCE
A1	N87°00'08"W	111.80'	A8	S07°34'13"W	49.16'
A2	N07°34'13"E	53.79'	A9	N22°44'28"W	48.84'
A3	S80°22'59"W	39.59'	A10	N53°13'17"W	31.54'
A4	S80°15'47"E	100.49'	A11	N22°44'28"W	25.99'
A5	N08°44'13"E	15.97'	A12	S07°34'13"W	127.26'
A6	S80°31'37"E	94.56'	A13	S87°00'01"E	16.05'
A7	N56°22'59"E	46.84'			

STORM WATER CONTROL AND ACCESS EASEMENT SHEET 1 OF 2  
1.044 ACRES

LINE	BEARING	DISTANCE	LINE	BEARING	DISTANCE
T1	N02°13'39"W	20.03'	T8	N33°13'54"E	13.31'
T2	N84°44'14"E	45.79'	T9	N84°44'13"E	128.46'
T3	S82°01'25"W	42.55'	T10	N05°15'48"W	22.50'
T4	S84°44'14"W	169.00'	T11	N84°44'14"E	189.00'
T5	S05°15'47"E	198.31'	T12	N82°01'25"E	42.55'
T6	S53°38'55"W	105.80'	T13	N84°44'14"E	46.85'
T7	N05°15'47"W	196.69'			

07-SP-108



NCGS NAD 83 (2007)

REVISIONS:

NO.	DATE	DESC.
1	04-29-08	ORIGINAL RELEASE
2	05-16-08	REVIEW COMMENTS



05-16-08

Michael D. Barr  
Professional Land Surveyor

SUBDIVISION PLAT  
OF  
PLEASANT GROVE  
BUSINESS  
PARK  
Cedar Fork Township  
Wake County  
North Carolina

04-29-2008

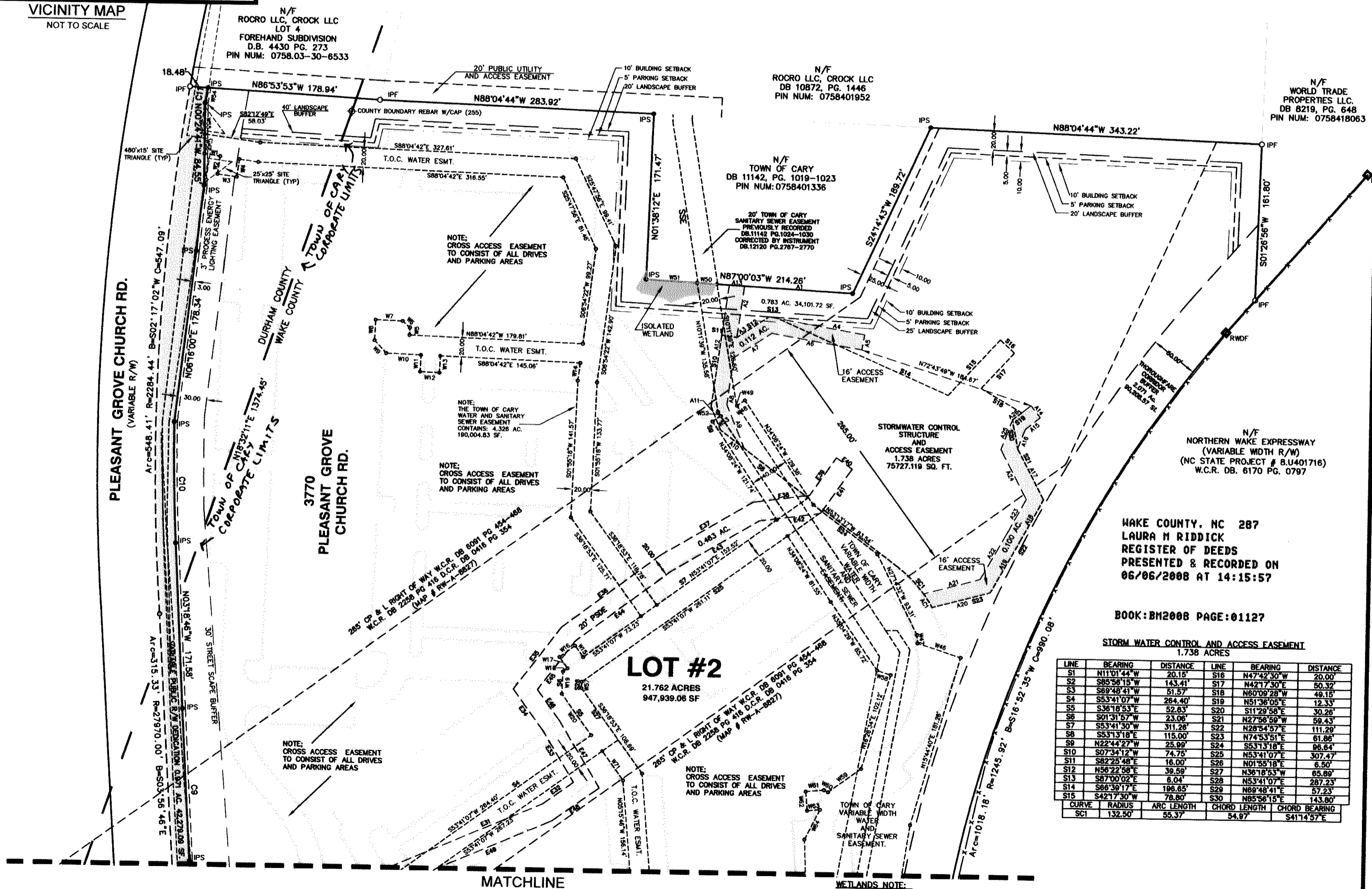
PREPARED FOR:  
Pleasant Grove Phase 1 L.P.  
5901-B Peachtree Dunwoody Rd.  
Suite 375  
Atlanta, GA. 30328  
Phone: 678-441-0001

**BSC GROUP**  
701 Corporate Center Dr., Suite 163  
Raleigh, North Carolina  
27607  
919-854-0811

© 2005 The BSC Group, Inc.  
SCALE: 1" = 80'  
0 40 80 160 FEET

FILE: PLEASANT GROVE  
DWG. NO: S-1  
JOB. NO: 07005.01

SHEET 2 OF 2



CARY REVIEW OFFICER: WPN 6-06-08