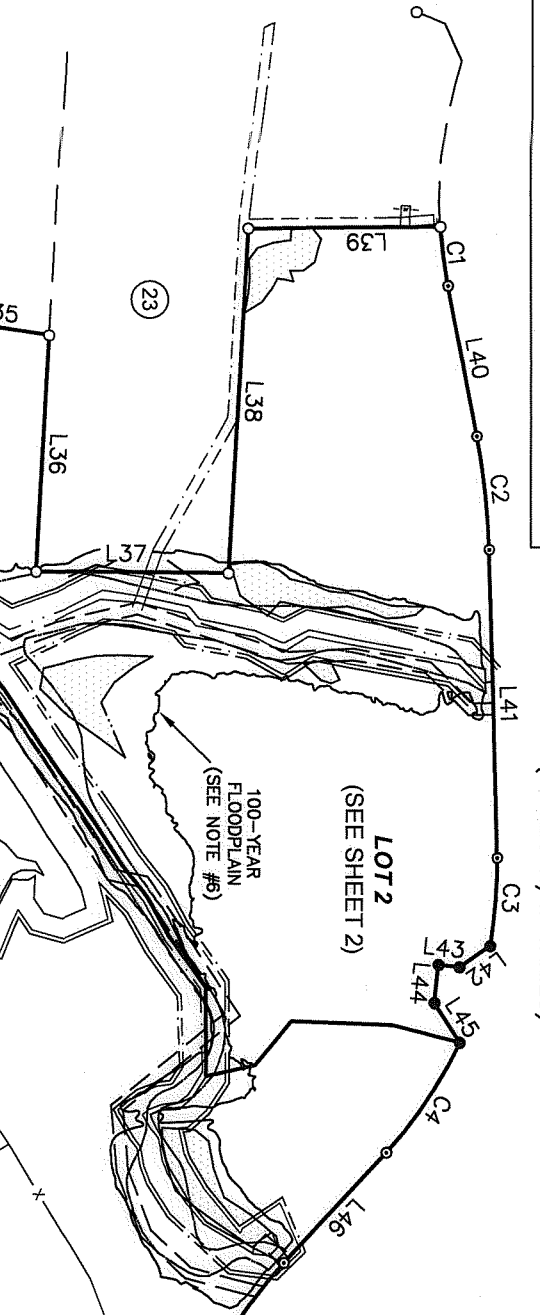


SEE SHEET 2 OF 2 FOR NEW LOT 2 DETAIL & OWNERS CERTIFICATES / SIGNATURES

T.W. ALEXANDER DRIVE (PUBLIC R/W VARIES)



**REVIEW OFFICER CERTIFICATE:**  
 I, *Robert W. Keenan*, Review Officer of Durham County, hereby certify that the plat or map to which this certification is affixed meets all statutory requirements for recording.  
 Date: *12/17/2020*  
 Review Officer: *Robert W. Keenan*

THE PURPOSE OF THIS PLAT IS TO RECOMBINE A PORTION OF LOT 2 AS PREVIOUSLY RECORDED IN PLAT BOOK 204, PAGES 11 & 12 IN THE DURHAM COUNTY REGISTRY

**LEGEND and NOMENCLATURE**

SYMBOLS	LINE TYPES
○	— X —
□	— O —
○	— W —
○	— S —
○	— D —
○	— P —
○	— R —
○	— E —
○	— F —
○	— G —
○	— H —
○	— I —
○	— J —
○	— K —
○	— L —
○	— M —
○	— N —
○	— O —
○	— P —
○	— Q —
○	— R —
○	— S —
○	— T —
○	— U —
○	— V —
○	— W —
○	— X —
○	— Y —
○	— Z —

**SITE INFORMATION:**  
 -PIN #0748-87-86-6565-DUR  
 -Development Tier: Suburban & RTP North CN  
 -RIVER BASIN: NEUSE  
 -ZONING: IL  
 -WATERSHED OVERLAY: N/A

**LINE TABLE**

LINE	LENGTH	BEARING
L1	1051.66	S. 91°16'7" E.
L2	516.00	S. 91°16'18" E.
L3	192.15	S. 87°27'7" E.
L4	42.22	S. 81°29'18" W.
L5	666.54	S. 40°53'59" W.
L6	239.09	S. 40°30'35" E.
L7	376.54	S. 94°18'17" E.
L8	376.54	S. 86°58'51" E.
L9	531.88	S. 87°22'31" E.
L10	682.07	S. 05°28'21" W.
L11	1091.53	S. 1°28'28" W.
L12	535.40	N. 89°29'50" W.
L13	600.13	N. 0°30'59" E.
L14	275.00	N. 89°29'50" W.
L15	400.00	N. 03°05'57" W.
L16	275.00	N. 89°29'50" W.
L17	129.24	N. 81°56'35" W.
L18	129.24	N. 88°22'0" W.
L19	259.94	N. 05°46'43" E.
L20	1210.64	N. 71°10'23" W.
L21	718.95	N. 35°04'41" W.
L22	465.99	N. 88°13'0" W.
L23	3350.91	N. 10°58'25" E.
L24	1100.99	S. 89°27'23" W.
L25	175.85	N. 88°58'27" W.
L26	764.60	S. 88°13'8" E.
L27	764.60	S. 88°10'3" E.
L28	709.94	S. 88°10'3" E.
L29	679.56	S. 87°59'48" E.
L30	655.28	S. 88°19'28" E.
L31	430.14	N. 16°33'54" E.
L32	499.98	N. 15°59'37" E.
L33	594.99	N. 88°58'27" W.
L34	275.87	N. 88°58'27" W.
L35	617.19	S. 86°53'42" E.
L36	617.19	N. 02°01'14" E.
L37	500.39	N. 86°38'31" W.
L38	899.22	N. 02°01'14" E.
L39	499.39	N. 78°7'59" E.
L40	396.31	N. 88°20'28" E.
L41	803.37	S. 34°58'40" E.
L42	97.99	S. 61°14'46" W.
L43	100.00	N. 87°12'31" E.
L44	122.43	N. 87°12'31" E.
L45	391.42	S. 87°12'31" E.
L46	391.42	S. 87°12'31" E.
L47	177.70	S. 25°13'19" E.

**CURVE TABLE**

CURVE	LENGTH	RADIUS	BEARING	CHORD
C1	154.92	1205.92	S. 82°48'42" E.	154.79
C2	236.01	1205.92	S. 82°48'42" W.	235.76
C3	236.01	1205.92	N. 86°22'33" W.	235.76
C4	346.41	1205.92	N. 86°22'33" W.	345.22
C5	598.33	1205.92	S. 81°31'17" E.	593.48

**EXEMPT PLAT**  
 THIS PLAT HAS BEEN CERTIFIED FOR RECORDEATION AS AN EXEMPT PLAT PURSUANT TO §153A-335 AND §160A-37B OF THE NORTH CAROLINA GENERAL STATUTES  
*Sharon A. Davis*  
 Durham City-County Planning Dept.  
 Date: *12/17/2020*

**POSITIONAL ACCURACY CERTIFICATION:**

- Justin L. Luther, certify that this map was drawn under my supervision from an actual GPS survey made under my supervision and the following information was used to perform the survey:
  - Class of survey: Urban Land Class (A)
  - Positional accuracy: 0.07'
  - Type of GPS field procedure: Real-time Kinematic network
  - Date(s) of survey: April 9, 2018
  - Datum/Easy: NAD 83 (NRS9 2011)
  - Published/Free-control used: NC Real-time Kinematic network
  - Geoid model/Geoid: GENU 12B
  - Combined and/or factor(s): 0.99993151
  - Units: U.S. Survey Feet

REGISTER OF DEEDS  
 Sharon A. Davis  
 Durham County, NC  
 2020 Dec 17 01:56:53 PM  
 BK:204 PG:94-94  
**EXEMPT RECOMBINATION PLAT**

**PROPERTY OF GENERAL ELECTRIC COMPANY**

TRIANGLE TOWNSHIP DURHAM COUNTY NORTH CAROLINA

SCALE: 1" = 500' (SHEET 1)

SHEET 1 OF 2

JOB NO.: 186868  
 FILE NAME: RM - XRC  
 PLOT DATE: 12/14/20

**NOTES:**  
 1) All distances are horizontal ground distances in U.S. survey feet unless otherwise noted. Areas computed by coordinate geometry.  
 2) This survey does not include nor depict any environmental evaluations by this office. All riparian buffers shown herein measured from existing top of bank of creek(s). Wetland areas taken from data provided by ACCOM and have not been field located by this office and shown only for reference.  
 3) Field survey(s) performed April 9 thru June 20, 2018.  
 4) Surveyor has made no investigation or independent search for easements of record, encroachments, restrictive covenants, ownership title evidence or any other facts that an accurate and current title search may disclose.  
 5) Locations of underground utilities as shown herein (if any) are based on aboveground structures and aboveground visual evidence. Locations of underground utilities may vary from location shown herein and any easements associated therewith may not be shown on this survey. Additional buried utilities/structures may be encountered. No excavations were made during the progress of this survey to locate buried utilities/structures.  
 6) All proposed and future development within the roadway or non-encroachment area of roadway fringe and non-encroachment area fringe, including fill, new construction, substantial improvements, manufactured housing, storage of materials and storage of toxic or flammable substances, is prohibited except as provided by applicable flood hazard regulations of US Section 322 and 8.4. Development within this site is subject to the following flood sources as noted and shown on:  
 FEMA PANEL(S): #3720074800K, #3720074900K  
 EFFECTIVE DATE(S): October 19, 2018  
 FEMA STREAM NAME: Striped Creek + Tributary A & B. BE(S): 388.7 / 341.1.  
 7) The State Plane Coordinates for this project were produced with RTK-GPS observations and processed using the North Carolina VRS network. The network positional accuracy of the derived positional information is ±0.07'.  
 NCCS Movement tolerance:  
 Northing: 0.0005, 0.0005  
 Easting: 2.053, 2.076  
 Combined factor: 0.99993151

- 1) T.W. ALEXANDER DR (PB 126, PG 51)
- 2) 60' DUKE POWER RIGHT OF WAY (PB 126, PG 51)
- 3) 60' SOUTHERN RAILWAY EASEMENT (PB 396, PG 657)
- 4) 60' DUKE POWER RIGHT OF WAY (PB 126, PG 51)
- 5) 60' DUKE POWER RIGHT OF WAY (PB 126, PG 51)
- 6) 60' DUKE POWER RIGHT OF WAY (PB 126, PG 51)
- 7) 60' DUKE POWER RIGHT OF WAY (PB 126, PG 51)
- 8) 60' DUKE POWER RIGHT OF WAY (PB 126, PG 51)
- 9) 60' DUKE POWER RIGHT OF WAY (PB 126, PG 51)
- 10) 60' DUKE POWER RIGHT OF WAY (PB 126, PG 51)
- 11) 60' DUKE POWER RIGHT OF WAY (PB 126, PG 51)
- 12) 60' DUKE POWER RIGHT OF WAY (PB 126, PG 51)
- 13) 60' DUKE POWER RIGHT OF WAY (PB 126, PG 51)
- 14) 60' DUKE POWER RIGHT OF WAY (PB 126, PG 51)
- 15) 60' DUKE POWER RIGHT OF WAY (PB 126, PG 51)
- 16) 60' DUKE POWER RIGHT OF WAY (PB 126, PG 51)
- 17) 60' DUKE POWER RIGHT OF WAY (PB 126, PG 51)
- 18) 60' DUKE POWER RIGHT OF WAY (PB 126, PG 51)
- 19) 60' DUKE POWER RIGHT OF WAY (PB 126, PG 51)
- 20) 60' DUKE POWER RIGHT OF WAY (PB 126, PG 51)
- 21) 60' DUKE POWER RIGHT OF WAY (PB 126, PG 51)
- 22) 60' DUKE POWER RIGHT OF WAY (PB 126, PG 51)
- 23) 60' DUKE POWER RIGHT OF WAY (PB 126, PG 51)
- 24) 60' DUKE POWER RIGHT OF WAY (PB 126, PG 51)

**WITNESS MY original signature, license number and seal this day of December, 2020.**  
 Justin L. Luther  
 Professional Land Surveyor (1-5107)

**WEST BRER TOWNS HOMEOWNERS ASSOCIATION**  
 DB 754, PG 340  
 DB 754, PG 341  
 DB 754, PG 342  
 DB 754, PG 343  
 DB 754, PG 344  
 DB 754, PG 345  
 DB 754, PG 346  
 DB 754, PG 347  
 DB 754, PG 348  
 DB 754, PG 349  
 DB 754, PG 350  
 DB 754, PG 351  
 DB 754, PG 352  
 DB 754, PG 353  
 DB 754, PG 354  
 DB 754, PG 355  
 DB 754, PG 356  
 DB 754, PG 357  
 DB 754, PG 358  
 DB 754, PG 359  
 DB 754, PG 360  
 DB 754, PG 361  
 DB 754, PG 362  
 DB 754, PG 363  
 DB 754, PG 364  
 DB 754, PG 365  
 DB 754, PG 366  
 DB 754, PG 367  
 DB 754, PG 368  
 DB 754, PG 369  
 DB 754, PG 370  
 DB 754, PG 371  
 DB 754, PG 372  
 DB 754, PG 373  
 DB 754, PG 374  
 DB 754, PG 375  
 DB 754, PG 376  
 DB 754, PG 377  
 DB 754, PG 378  
 DB 754, PG 379  
 DB 754, PG 380  
 DB 754, PG 381  
 DB 754, PG 382  
 DB 754, PG 383  
 DB 754, PG 384  
 DB 754, PG 385  
 DB 754, PG 386  
 DB 754, PG 387  
 DB 754, PG 388  
 DB 754, PG 389  
 DB 754, PG 390  
 DB 754, PG 391  
 DB 754, PG 392  
 DB 754, PG 393  
 DB 754, PG 394  
 DB 754, PG 395  
 DB 754, PG 396  
 DB 754, PG 397  
 DB 754, PG 398  
 DB 754, PG 399  
 DB 754, PG 400  
 DB 754, PG 401  
 DB 754, PG 402  
 DB 754, PG 403  
 DB 754, PG 404  
 DB 754, PG 405  
 DB 754, PG 406  
 DB 754, PG 407  
 DB 754, PG 408  
 DB 754, PG 409  
 DB 754, PG 410  
 DB 754, PG 411  
 DB 754, PG 412  
 DB 754, PG 413  
 DB 754, PG 414  
 DB 754, PG 415  
 DB 754, PG 416  
 DB 754, PG 417  
 DB 754, PG 418  
 DB 754, PG 419  
 DB 754, PG 420  
 DB 754, PG 421  
 DB 754, PG 422  
 DB 754, PG 423  
 DB 754, PG 424  
 DB 754, PG 425  
 DB 754, PG 426  
 DB 754, PG 427  
 DB 754, PG 428  
 DB 754, PG 429  
 DB 754, PG 430  
 DB 754, PG 431  
 DB 754, PG 432  
 DB 754, PG 433  
 DB 754, PG 434  
 DB 754, PG 435  
 DB 754, PG 436  
 DB 754, PG 437  
 DB 754, PG 438  
 DB 754, PG 439  
 DB 754, PG 440  
 DB 754, PG 441  
 DB 754, PG 442  
 DB 754, PG 443  
 DB 754, PG 444  
 DB 754, PG 445  
 DB 754, PG 446  
 DB 754, PG 447  
 DB 754, PG 448  
 DB 754, PG 449  
 DB 754, PG 450  
 DB 754, PG 451  
 DB 754, PG 452  
 DB 754, PG 453  
 DB 754, PG 454  
 DB 754, PG 455  
 DB 754, PG 456  
 DB 754, PG 457  
 DB 754, PG 458  
 DB 754, PG 459  
 DB 754, PG 460  
 DB 754, PG 461  
 DB 754, PG 462  
 DB 754, PG 463  
 DB 754, PG 464  
 DB 754, PG 465  
 DB 754, PG 466  
 DB 754, PG 467  
 DB 754, PG 468  
 DB 754, PG 469  
 DB 754, PG 470  
 DB 754, PG 471  
 DB 754, PG 472  
 DB 754, PG 473  
 DB 754, PG 474  
 DB 754, PG 475  
 DB 754, PG 476  
 DB 754, PG 477  
 DB 754, PG 478  
 DB 754, PG 479  
 DB 754, PG 480  
 DB 754, PG 481  
 DB 754, PG 482  
 DB 754, PG 483  
 DB 754, PG 484  
 DB 754, PG 485  
 DB 754, PG 486  
 DB 754, PG 487  
 DB 754, PG 488  
 DB 754, PG 489  
 DB 754, PG 490  
 DB 754, PG 491  
 DB 754, PG 492  
 DB 754, PG 493  
 DB 754, PG 494  
 DB 754, PG 495  
 DB 754, PG 496  
 DB 754, PG 497  
 DB 754, PG 498  
 DB 754, PG 499  
 DB 754, PG 500  
 DB 754, PG 501  
 DB 754, PG 502  
 DB 754, PG 503  
 DB 754, PG 504  
 DB 754, PG 505  
 DB 754, PG 506  
 DB 754, PG 507  
 DB 754, PG 508  
 DB 754, PG 509  
 DB 754, PG 510  
 DB 754, PG 511  
 DB 754, PG 512  
 DB 754, PG 513  
 DB 754, PG 514  
 DB 754, PG 515  
 DB 754, PG 516  
 DB 754, PG 517  
 DB 754, PG 518  
 DB 754, PG 519  
 DB 754, PG 520  
 DB 754, PG 521  
 DB 754, PG 522  
 DB 754, PG 523  
 DB 754, PG 524  
 DB 754, PG 525  
 DB 754, PG 526  
 DB 754, PG 527  
 DB 754, PG 528  
 DB 754, PG 529  
 DB 754, PG 530  
 DB 754, PG 531  
 DB 754, PG 532  
 DB 754, PG 533  
 DB 754, PG 534  
 DB 754, PG 535  
 DB 754, PG 536  
 DB 754, PG 537  
 DB 754, PG 538  
 DB 754, PG 539  
 DB 754, PG 540  
 DB 754, PG 541  
 DB 754, PG 542  
 DB 754, PG 543  
 DB 754, PG 544  
 DB 754, PG 545  
 DB 754, PG 546  
 DB 754, PG 547  
 DB 754, PG 548  
 DB 754, PG 549  
 DB 754, PG 550  
 DB 754, PG 551  
 DB 754, PG 552  
 DB 754, PG 553  
 DB 754, PG 554  
 DB 754, PG 555  
 DB 754, PG 556  
 DB 754, PG 557  
 DB 754, PG 558  
 DB 754, PG 559  
 DB 754, PG 560  
 DB 754, PG 561  
 DB 754, PG 562  
 DB 754, PG 563  
 DB 754, PG 564  
 DB 754, PG 565  
 DB 754, PG 566  
 DB 754, PG 567  
 DB 754, PG 568  
 DB 754, PG 569  
 DB 754, PG 570  
 DB 754, PG 571  
 DB 754, PG 572  
 DB 754, PG 573  
 DB 754, PG 574  
 DB 754, PG 575  
 DB 754, PG 576  
 DB 754, PG 577  
 DB 754, PG 578  
 DB 754, PG 579  
 DB 754, PG 580  
 DB 754, PG 581  
 DB 754, PG 582  
 DB 754, PG 583  
 DB 754, PG 584  
 DB 754, PG 585  
 DB 754, PG 586  
 DB 754, PG 587  
 DB 754, PG 588  
 DB 754, PG 589  
 DB 754, PG 590  
 DB 754, PG 591  
 DB 754, PG 592  
 DB 754, PG 593  
 DB 754, PG 594  
 DB 754, PG 595  
 DB 754, PG 596  
 DB 754, PG 597  
 DB 754, PG 598  
 DB 754, PG 599  
 DB 754, PG 600  
 DB 754, PG 601  
 DB 754, PG 602  
 DB 754, PG 603  
 DB 754, PG 604  
 DB 754, PG 605  
 DB 754, PG 606  
 DB 754, PG 607  
 DB 754, PG 608  
 DB 754, PG 609  
 DB 754, PG 610  
 DB 754, PG 611  
 DB 754, PG 612  
 DB 754, PG 613  
 DB 754, PG 614  
 DB 754, PG 615  
 DB 754, PG 616  
 DB 754, PG 617  
 DB 754, PG 618  
 DB 754, PG 619  
 DB 754, PG 620  
 DB 754, PG 621  
 DB 754, PG 622  
 DB 754, PG 623  
 DB 754, PG 624  
 DB 754, PG 625  
 DB 754, PG 626  
 DB 754, PG 627  
 DB 754, PG 628  
 DB 754, PG 629  
 DB 754, PG 630  
 DB 754, PG 631  
 DB 754, PG 632  
 DB 754, PG 633  
 DB 754, PG 634  
 DB 754, PG 635  
 DB 754, PG 636  
 DB 754, PG 637  
 DB 754, PG 638  
 DB 754, PG 639  
 DB 754, PG 640  
 DB 754, PG 641  
 DB 754, PG 642  
 DB 754, PG 643  
 DB 754, PG 644  
 DB 754, PG 645  
 DB 754, PG 646  
 DB 754, PG 647  
 DB 754, PG 648  
 DB 754, PG 649  
 DB 754, PG 650  
 DB 754, PG 651  
 DB 754, PG 652  
 DB 754, PG 653  
 DB 754, PG 654  
 DB 754, PG 655  
 DB 754, PG 656  
 DB 754, PG 657  
 DB 754, PG 658  
 DB 754, PG 659  
 DB 754, PG 660  
 DB 754, PG 661  
 DB 754, PG 662  
 DB 754, PG 663  
 DB 754, PG 664  
 DB 754, PG 665  
 DB 754, PG 666  
 DB 754, PG 667  
 DB 754, PG 668  
 DB 754, PG 669  
 DB 754, PG 670  
 DB 754, PG 671  
 DB 754, PG 672  
 DB 754, PG 673  
 DB 754, PG 674  
 DB 754, PG 675  
 DB 754, PG 676  
 DB 754, PG 677  
 DB 754, PG 678  
 DB 754, PG 679  
 DB 754, PG 680  
 DB 754, PG 681  
 DB 754, PG 682  
 DB 754, PG 683  
 DB 754, PG 684  
 DB 754, PG 685  
 DB 754, PG 686  
 DB 754, PG 687  
 DB 754, PG 688  
 DB 754, PG 689  
 DB 754, PG 690  
 DB 754, PG 691  
 DB 754, PG 692  
 DB 754, PG 693  
 DB 754, PG 694  
 DB 754, PG 695  
 DB 754, PG 696  
 DB 754, PG 697  
 DB 754, PG 698  
 DB 754, PG 699  
 DB 754, PG 700  
 DB 754, PG 701  
 DB 754, PG 702  
 DB 754, PG 703  
 DB 754, PG 704  
 DB 754, PG 705  
 DB 754, PG 706  
 DB 754, PG 707  
 DB 754, PG 708  
 DB 754, PG 709  
 DB 754, PG 710  
 DB 754, PG 711  
 DB 754, PG 712  
 DB 754, PG 713  
 DB 754, PG 714  
 DB 754, PG 715  
 DB 754, PG 716  
 DB 754, PG 717  
 DB 754, PG 718  
 DB 754, PG 719  
 DB 754, PG 720  
 DB 754, PG 721  
 DB 754, PG 722  
 DB 754, PG 723  
 DB 754, PG 724  
 DB 754, PG 725  
 DB 754, PG 726  
 DB 754, PG 727  
 DB 754, PG 728  
 DB 754, PG 729  
 DB 754, PG 730  
 DB 754, PG 731  
 DB 754, PG 732  
 DB 754, PG 733  
 DB 754, PG 734  
 DB 754, PG 735  
 DB 754, PG 736  
 DB 754, PG 737  
 DB 754, PG 738  
 DB 754, PG 739  
 DB 754, PG 740  
 DB 754, PG 741  
 DB 754, PG 742  
 DB 754, PG 743  
 DB 754, PG 744  
 DB 754, PG 745  
 DB 754, PG 746  
 DB 754, PG 747  
 DB 754, PG 748  
 DB 754, PG 749  
 DB 754, PG 750  
 DB 754, PG 751  
 DB 754, PG 752  
 DB 754, PG 753  
 DB 754, PG 754  
 DB 754, PG 755  
 DB 754, PG 756  
 DB 754, PG 757  
 DB 754, PG