

FOR SALE OR LEASE  
DURHAM, NC

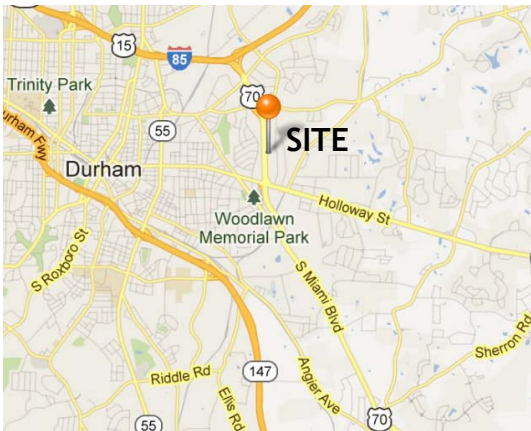


REAL ESTATE  
ASSOCIATES, INC.



## 320 Muldee Street

OFFICE/WAREHOUSE WITH FENCED PARKING



### LOCATION

320 Muldee St.  
Durham, NC 27703

### PARCEL ID

159525

### BUILDING SIZE

20,000 SF (+/-)  
• 4,394 SF Office  
• 15,606 SF Heated Warehouse

### ACREAGE

2.231 Acres (+/-)

### SALE PRICE

\$1,100,000

### LEASE RATE

\$9,000 per month NNN

### ZONING

Industrial Light (IL)

### FEATURES

- Warehouse ceiling height 14'-19'
- Clearspan
- 5 Drive-in doors

### CLOSE PROXIMITY TO

US-70, I-85, NC-147

**CHARLES "SANDY" ALLEN**

Direct: 919.287.2124

Mobile: 919.602.8891

callen@realestateassoc.com

p. 919-489-2000

www.realestateassoc.com

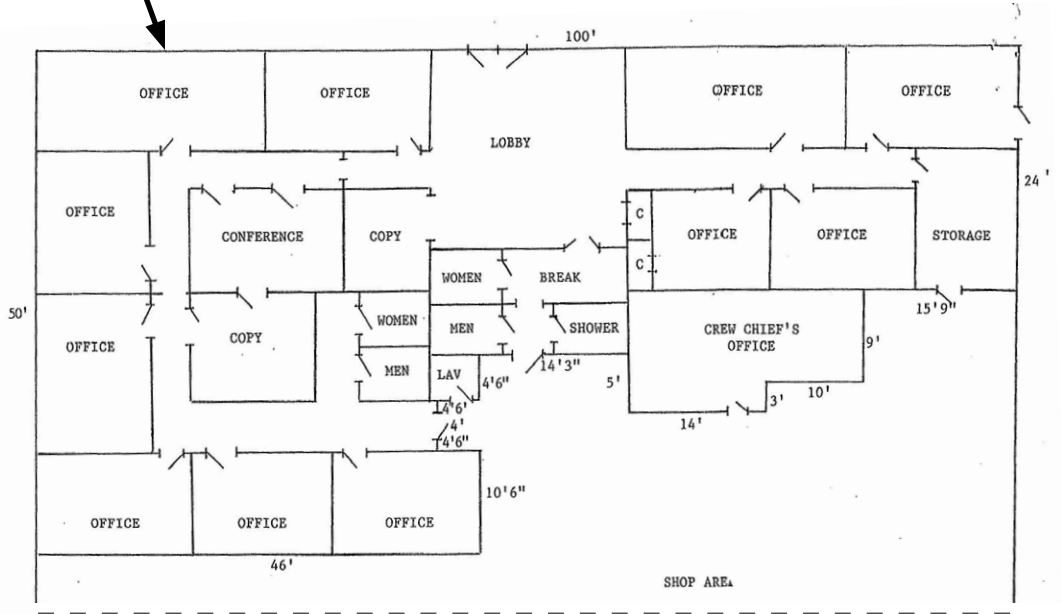
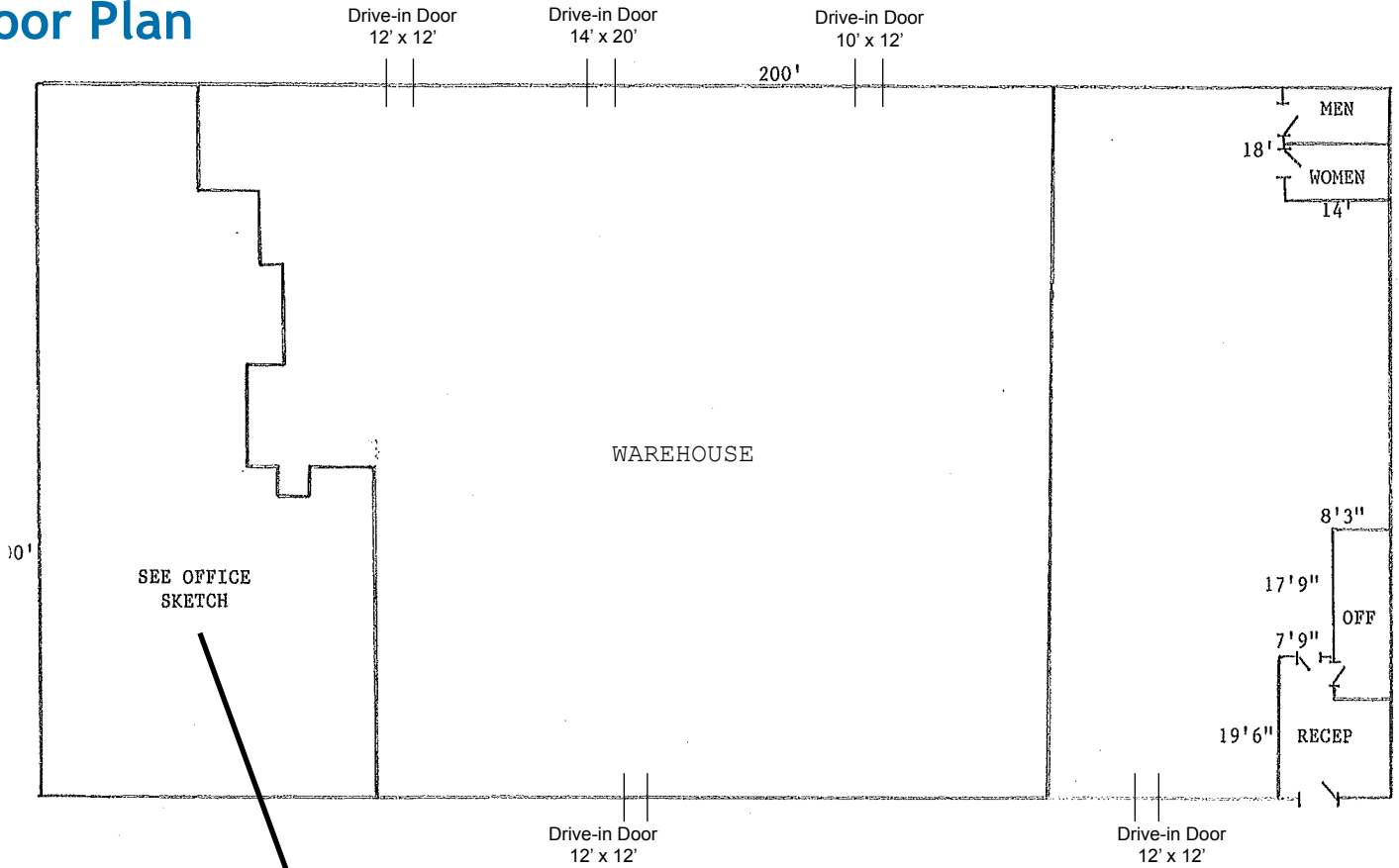
f. 919-493-8533

3333 Durham-Chapel Hill Boulevard, Suite C | P.O. Box 52328, Durham, NC 27717-2328

DISCLAIMER: No warranty or representation, expressed or implied, is made to the accuracy of the information contained herein, and same is submitted subject to errors, omissions, change of price, rental, or other conditions, withdrawal without notice, and to any special listing conditions imposed by principals. REV 05/16/2014



# Floor Plan



p. 919-489-2000

www.realestateassoc.com

f. 919-493-8533

3333 Durham-Chapel Hill Boulevard, Suite C | P.O. Box 52328, Durham, NC 27717-2328

DISCLAIMER: No warranty or representation, expressed or implied, is made to the accuracy of the information contained herein, and same is submitted subject to errors, omissions, change of price, rental, or other conditions, withdrawal without notice, and to any special listing conditions imposed by principals. REV 05/16/2014

