

HILLSBOROUGH

Commercial Lots



FOR SALE - \$360,000



Two commercial lots totaling 3.3 acres in the long-established Old Mill Business Park.

Millstone Drive has easy access to both I-40 to the south and I-85 to the north from Old NC 86 (Churton Street). The lots are conveniently close to restaurants and services.

Hillsborough's Economic Development District zoning allows office and light industrial uses.

Utilities are to the site including gravity sewer to the rear of the site.

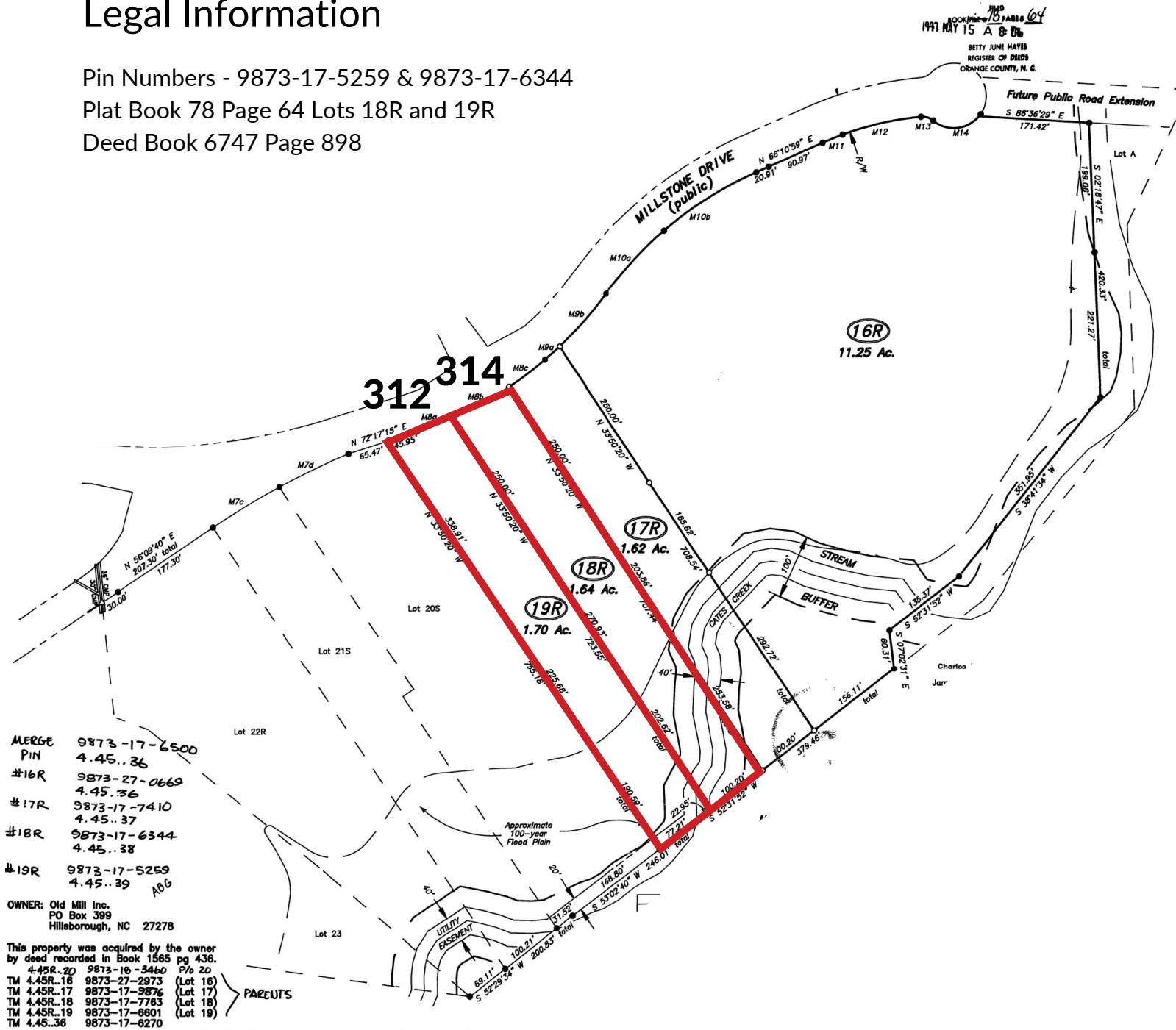
Mark O'Neal, CCIM
(919) 287-3051
marko@pickettsprouse.com

Emilee Collins, CCIM
(919) 730-7040
emilee@emileecollins.com

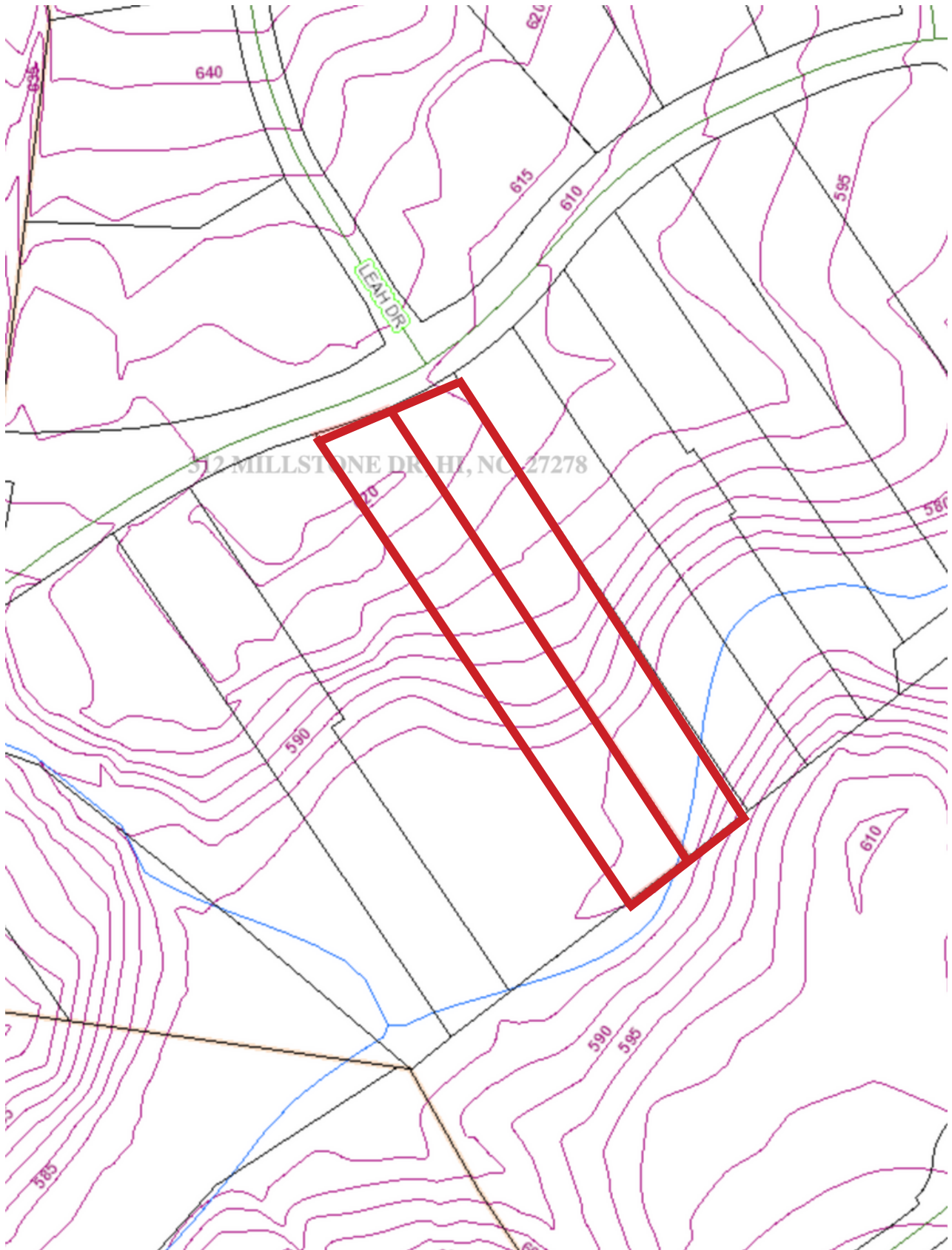
312 & 314 MILLSTONE DR, HILLSBOROUGH NC

Legal Information

Pin Numbers - 9873-17-5259 & 9873-17-6344
 Plat Book 78 Page 64 Lots 18R and 19R
 Deed Book 6747 Page 898

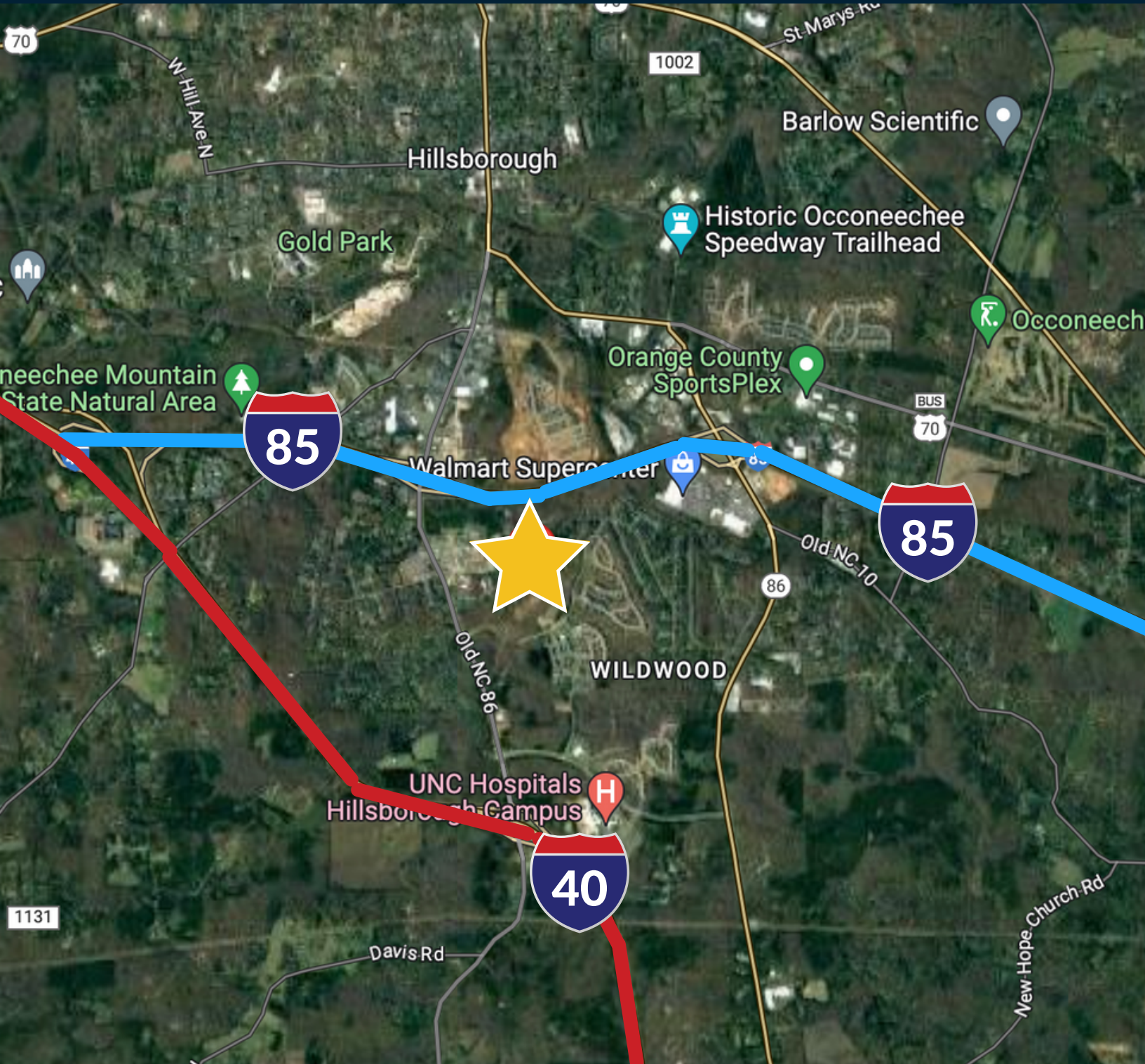


312 & 314 MILLSTONE DR, HILLSBOROUGH NC



312 & 314 MILLSTONE DR, HILLSBOROUGH NC

Regional Map



Mark O'Neal, CCIM
(919) 287-3051
marko@pickettsprouse.com

Emilee Collins, CCIM
(919) 730-7040
emilee@emileecollins.com

**PICKETT
SPROUSE**

COMMERCIAL
REAL ESTATE



A WEST & WOODALL COMPANY

Pickett Sprouse Commercial Real Estate

PickettSprouse.com

(919) 493-0395

1901 Hillandale Rd, Suite 100

Durham, NC 27705

Mark O'Neal, CCIM

(919) 287-3051

marko@pickettsprouse.com

Emilee Collins, CCIM

(919) 730-7040

emilee@emileecollins.com