

PROPERTY OF  
**L. E. PAINTER**  
 DURHAM TOWNSHIP, DURHAM COUNTY, N. C.  
 SCALE: 1" = 100'  
 DECEMBER 1958  
 J. WATTS COPELY LAND SURVEYOR

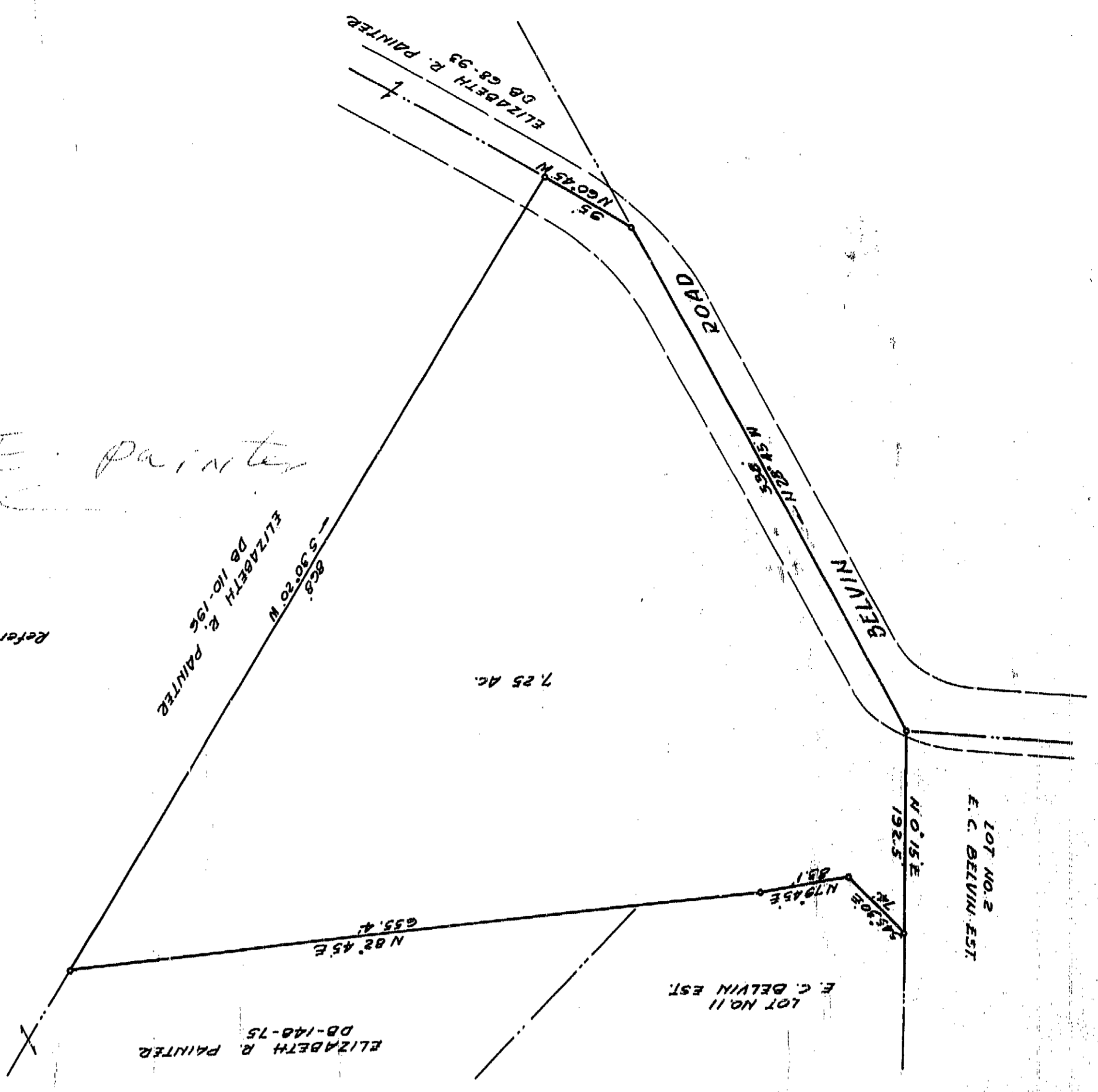
**FILED**  
 REC'D  
 JAN 12 1959  
 REG. S. J. C. S.  
 DURHAM COUNTY, N. C.

*L. E. Painter*

Reference: DB 43-113

North Carolina, Durham County,  
 The foregoing certificate  
 of **Watts Copley**,  
 Public of Durham County, is adjudged to be correct,  
 This 5<sup>th</sup> day of **January**, 1959  
 Clerk Superior Court

North Carolina, Durham County  
 I, **Watts Copley**, do hereby certify that this plat was made from an actual  
 survey made by me and correct to the best of my knowledge and belief, at  
 the time of the same, and that the same is in accordance with the correct  
 and true plat of the same as shown to me by the owner of the same.  
 My commission expires **1-31-59**  
**Watts Copley**  
 Registered Land Surveyor



85-574

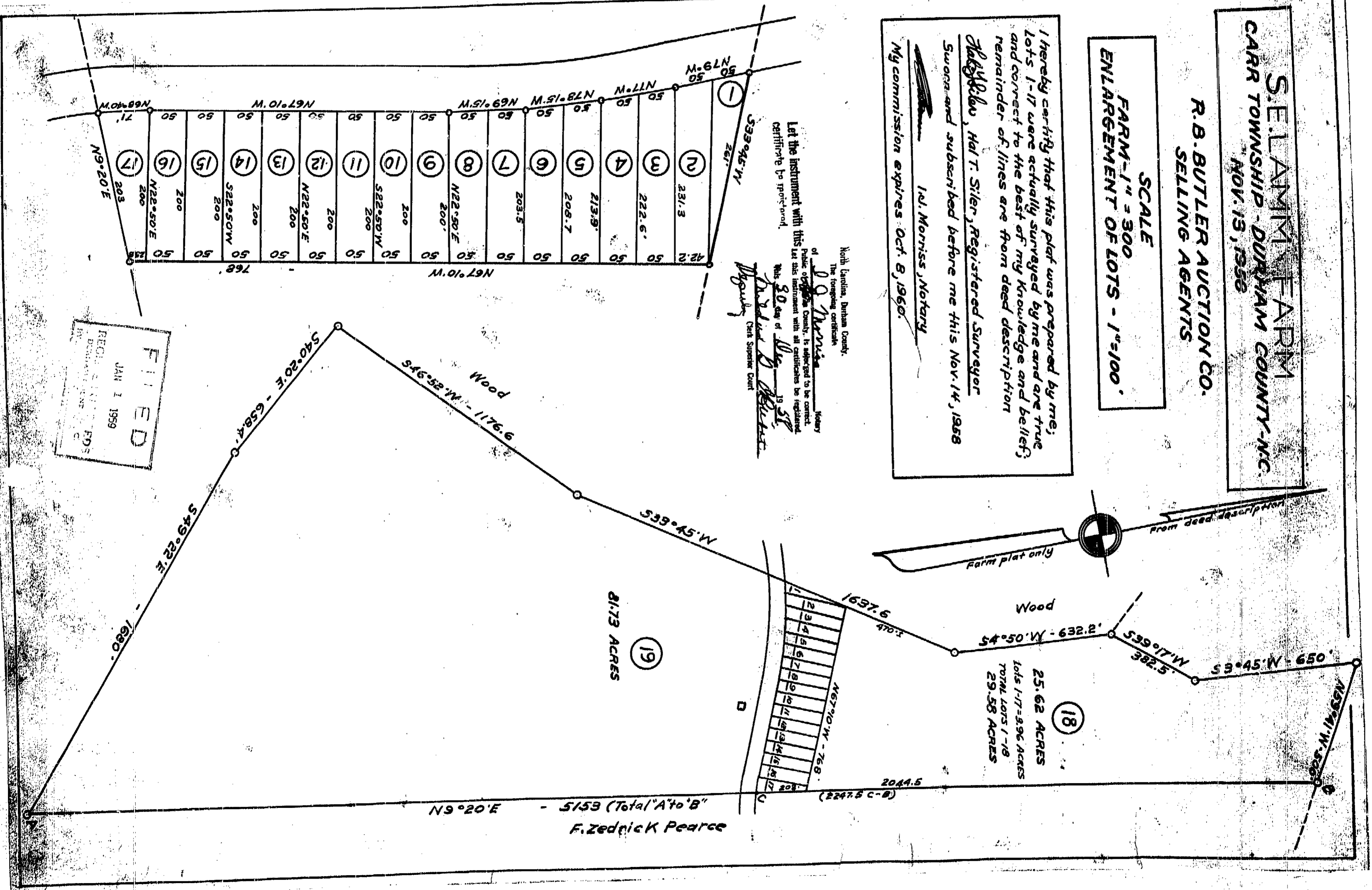
**S. E. LAMM FARM**  
 CARR TOWNSHIP - DURHAM COUNTY - N. C.  
 NOV. 13, 1958

**R. B. BUTLER AUCTION CO.**  
 SELLING AGENTS

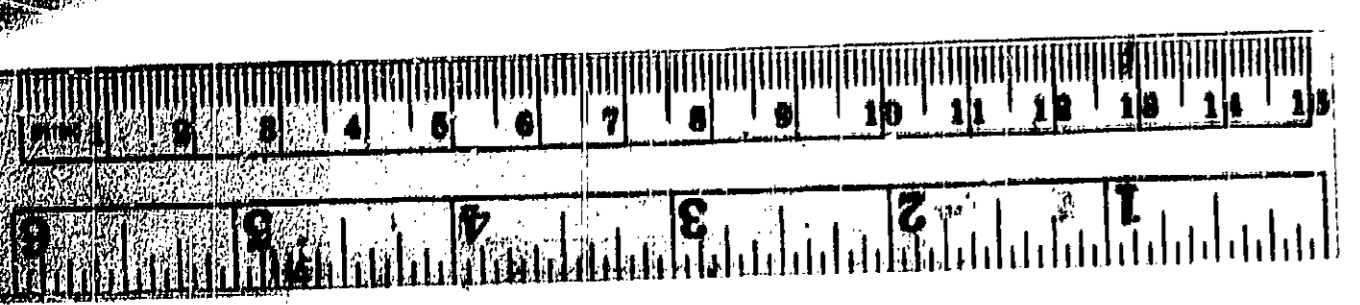
SCALE  
 FARM - 1" = 300'  
 ENLARGEMENT OF LOTS - 1" = 100'

I hereby certify that this plat was prepared by me, and  
 that the same is in accordance with the correct and true  
 plat of the same as shown to me by the owner of the same, and  
 that the same is in accordance with the correct and true  
 remainder of lines are from deed description  
**Watts Copley**, Notary  
 My commission expires Oct. 8, 1960.

North Carolina, Durham County,  
 The foregoing certificate  
 of **Watts Copley**,  
 Public of Durham County, is adjudged to be correct,  
 This 30<sup>th</sup> day of **November**, 1958  
 Clerk Superior Court



**FILED**  
 REC'D  
 JAN 1 1959  
 REG. S. J. C. S.  
 DURHAM COUNTY, N. C.



**BK 3 5**  
**PG 5 4**