

**PICKETT
SPROUSE**

COMMERCIAL
REAL ESTATE



919.493.0395

PICKETT-SPROUSE.COM

LAND FOR SALE

A WEST & WOODALL COMPANY



Schley Road Acreage Hillsborough, North Carolina

30.41 acres of beautiful pasture with high ridge home site and larger pond. Unrestricted — Horses welcome! Adjoins 135 acre Orange County tract with conservation easements.

\$325,000

LEGAL: PIN # 9877-73-8604

DB: 5470 PG 305

Directions: From US 70, take Pleasant Green Road. Cross St. Mary's Road which becomes Schley Road. Three miles on left.

For more information, please contact:

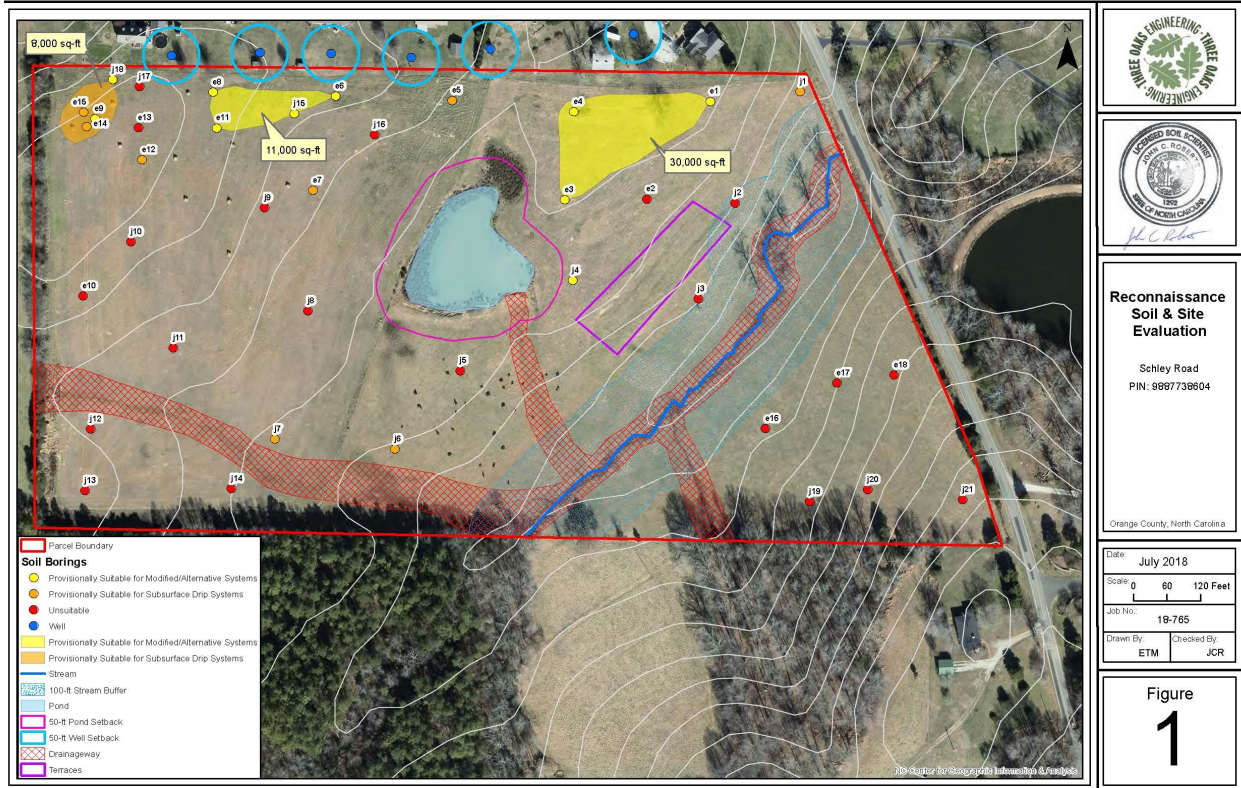
Mark O'Neal, CCIM

marko@pickett-sprouse.com | direct 919-287-3051
(919)493-0395 | Visit us at pickett-sprouse.com



30.41 ACRE SCHLEY ROAD LOT

SOILS



TOPO



Mark O'Neal, CCIM marko@pickett-sprouse.com | 919-287-3051
Office: (919)493-0395 | Visit us at pickett-sprouse.com