



Description	Early 1950-s house being sold for future commercial redevelopment. Tract contains .6 acre. Hillsborough water. Sewer close-by across creek.
Zoning	Hillsborough Economic Development District (EDD)
Legal	PIN No. 9873-05-3777 Deed Book 1711 page 148
Price	\$90,000

PLEASE CONTACT:
Mark N. O’Neal, CCIM
marko@pickett-sprouse.com
Direct 919-287-3051 | Cell 919-815-8303



Orange County, NC GIS

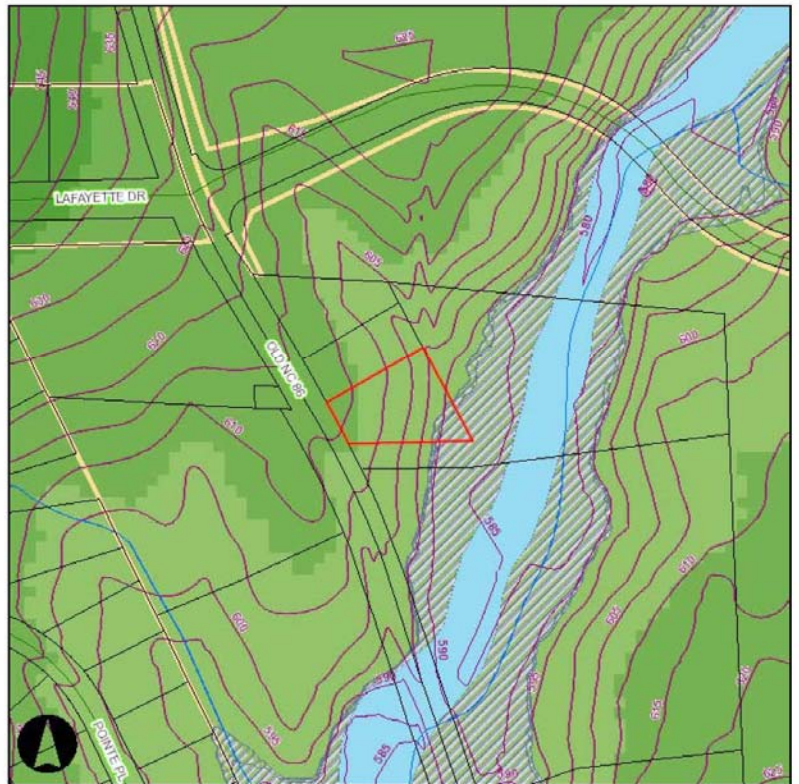


1 inch = 200 feet
Created on 3/21/2017. Orange County, North Carolina.

AERIAL



Orange County, NC GIS



1 inch = 200 feet
Created on 3/22/2017. Orange County, North Carolina.

TERRAIN HYDROLOGY