

Pickett-Sprouse

REAL ESTATE

919.493.0395

PICKETT-SPROUSE.COM

COMMERCIAL SITE FOR SALE



2401 OLD NC 86; HILLSBOROUGH, NC 27278

Well built house best suited for use as a professional office or for redevelopment.

The site is highly visible on Old NC 86 between I-85 to the north (Exit 164) and I-40 to the south (Exit 261).

Lot is 1.37 acres with two driveway cuts onto Old NC 86. Ground floor is 1,165 SF. Upstairs space is finished but unheated.

Two car detached garage and outbuildings on site. Currently on well and septic system. Water and sewer are available.

ZONING: Economic Development (EDH-1) in Orange County Jurisdiction. Annexation into Hillsborough City Limits and rezoning is something to consider.

LEGAL: Deed Book 611 page 023 and 15-E-601

PIN No: 9863-96-5912

Plat Book 5 page 110—lots 66, 67, 68, 69

For more information, please contact:

Mark O'Neal, CCIM

marko@pickett-sprouse.com

Direct 919-287-3051 | Cell 919-815-8303

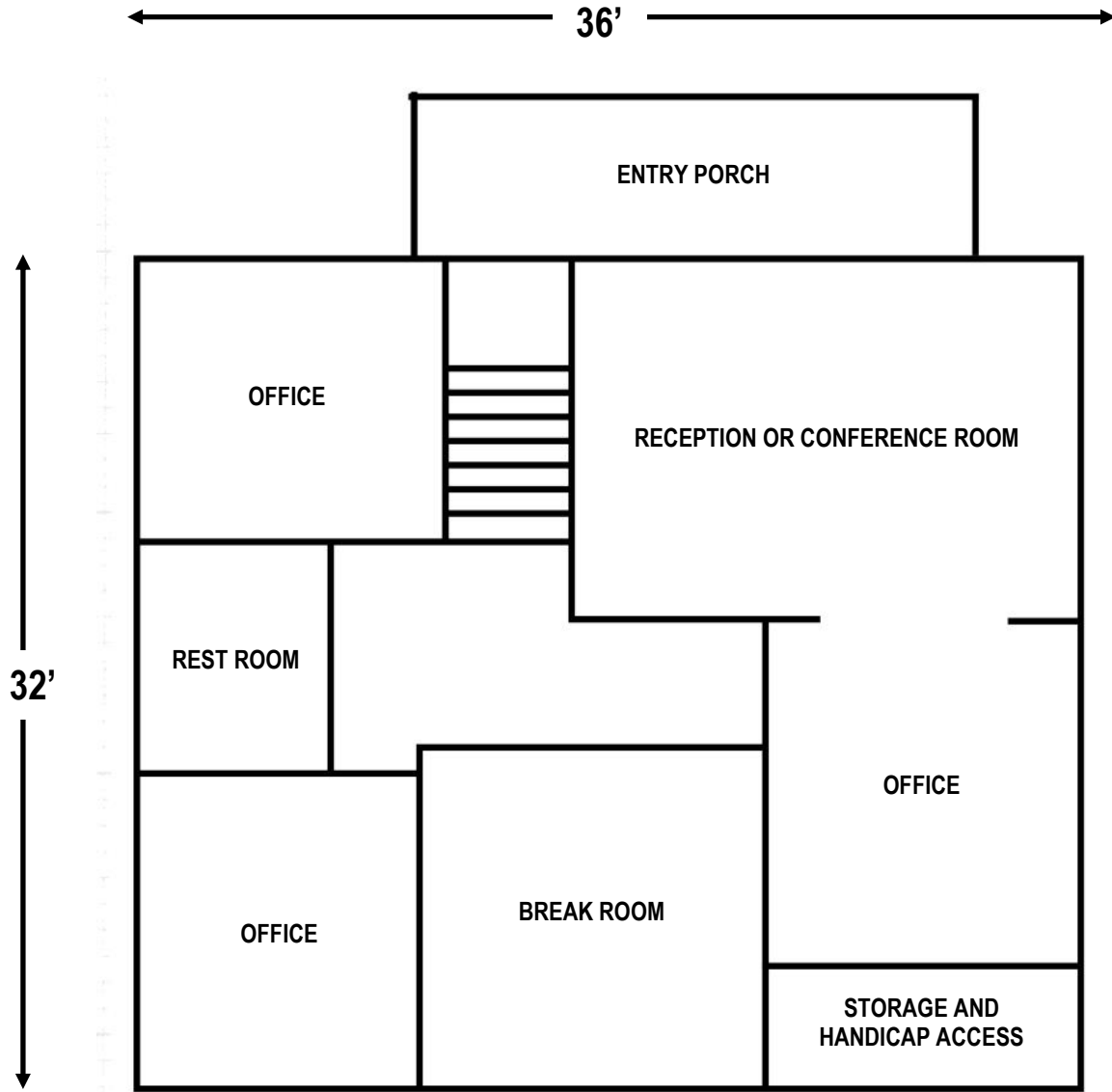
Visit us at pickett-sprouse.com

PRICE: \$260,000



Mark O'Neal, CCIM
marko@pickett-sprouse.com
Direct 919-287-3051
Cell 919-815-8303
pickett-sprouse.com

-----FLOOR PLAN-----



Mark O'Neal, CCIM
marko@pickett-sprouse.com
Direct 919-287-3051
Cell 919-815-8303
pickett-sprouse.com