

Pickett-Sprouse

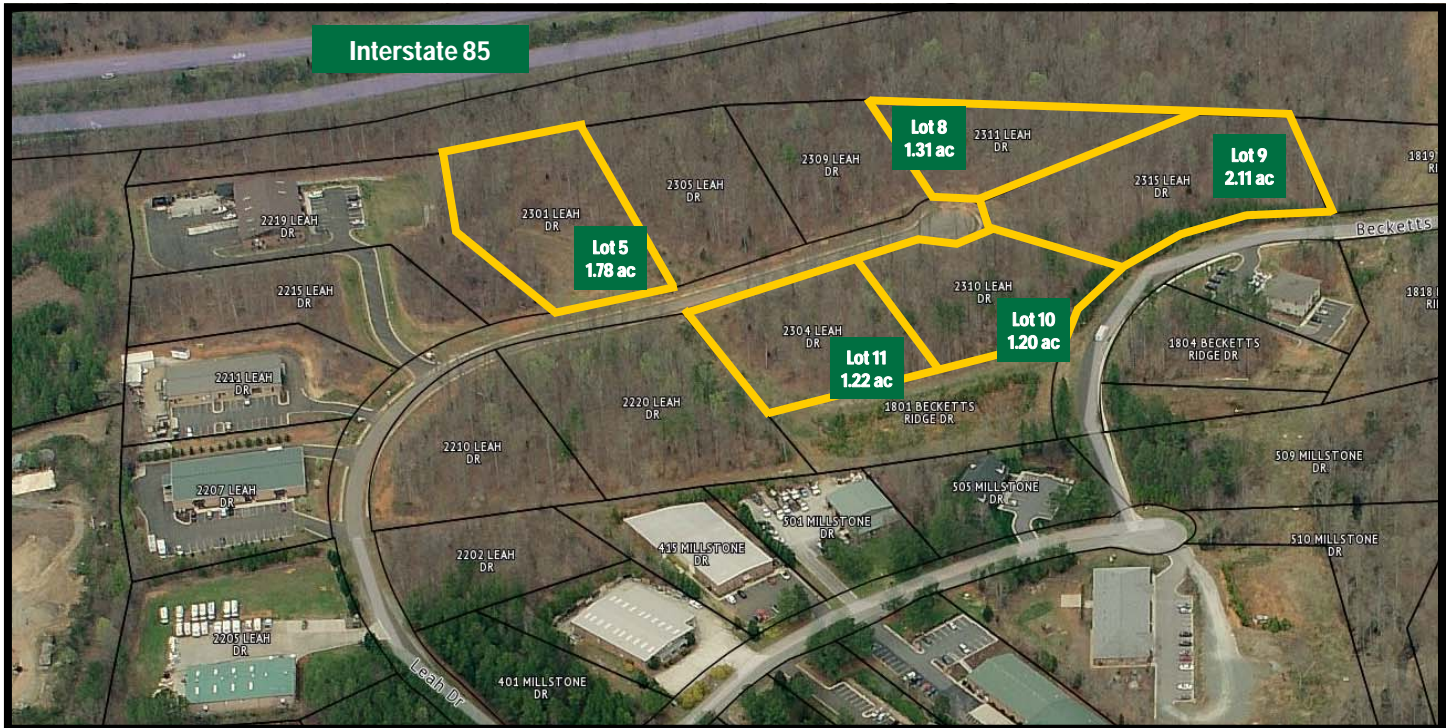
REAL ESTATE

919.493.0395

PICKETT-SPROUSE.COM

OLD MILL BUSINESS PARK HILLSBOROUGH, NORTH CAROLINA

COMMERCIAL BUILDING LOTS FOR SALE



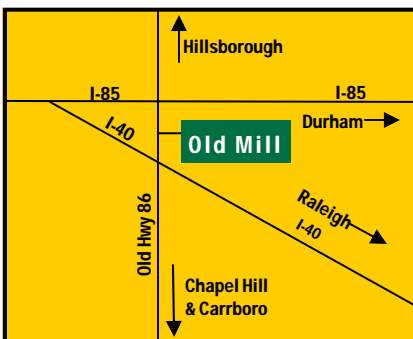
Zoning: EDD Primary, Economic Development District allows uses from office to light manufacturing.

Utilities: Hillsborough water & sewer

Location: Old Mill Business Park is located on Old NC 86 (S. Churton Street) midway between I-40 and I-85. Look for Hillsborough National Bank and the State Employees Credit Union.

Size: Most lots are 1 to 2 acres and can be combined for large users.

Price: Starting at \$75,000; multiple-lot discounts (see price list on reverse)



(919) 493-0395

MARK O'NEAL—marko@pickett-sprouse.com

GREG PAYNE—greg@pickett-sprouse.com

REAL ESTATE



LOT #	ACREAGE	PRICE
5	1.78	\$75,000
8	1.31	\$90,000
9	2.11	\$110,000
Lot 8 & 9 Package Discount:		\$175,000
10	1.20	\$100,000
11	1.22	\$90,000
Lot 10 & 11 Package Discount:		\$175,000



Pickett-Sprouse

REAL ESTATE

