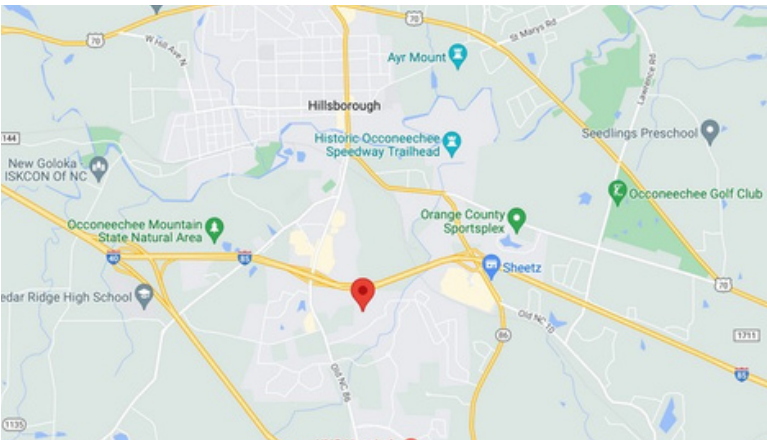


FOR LEASE

Old Mill Business Park

2210 Leah Drive, Unit 5 Hillsborough, NC 27278



OFFERING SUMMARY

\$3,300/mo (includes projected TICAM)

Available January 1, 2024

Zoned Economic Development District.

1,920 SF Flex Unit with 390 SF of Office Space.

\$2,764 base rent plus \$3.65/SF projected TICAM

For more information contact:

Emilee Collins, CCIM

(919) 730-7040

emilee@pickettsprouse.com

Mark O'Neal, CCIM

(919) 815-8303

marko@pickettsprouse.com



FOR LEASE

Old Mill Business Park

2210 Leah Drive, Unit 5 Hillsborough, NC 27278



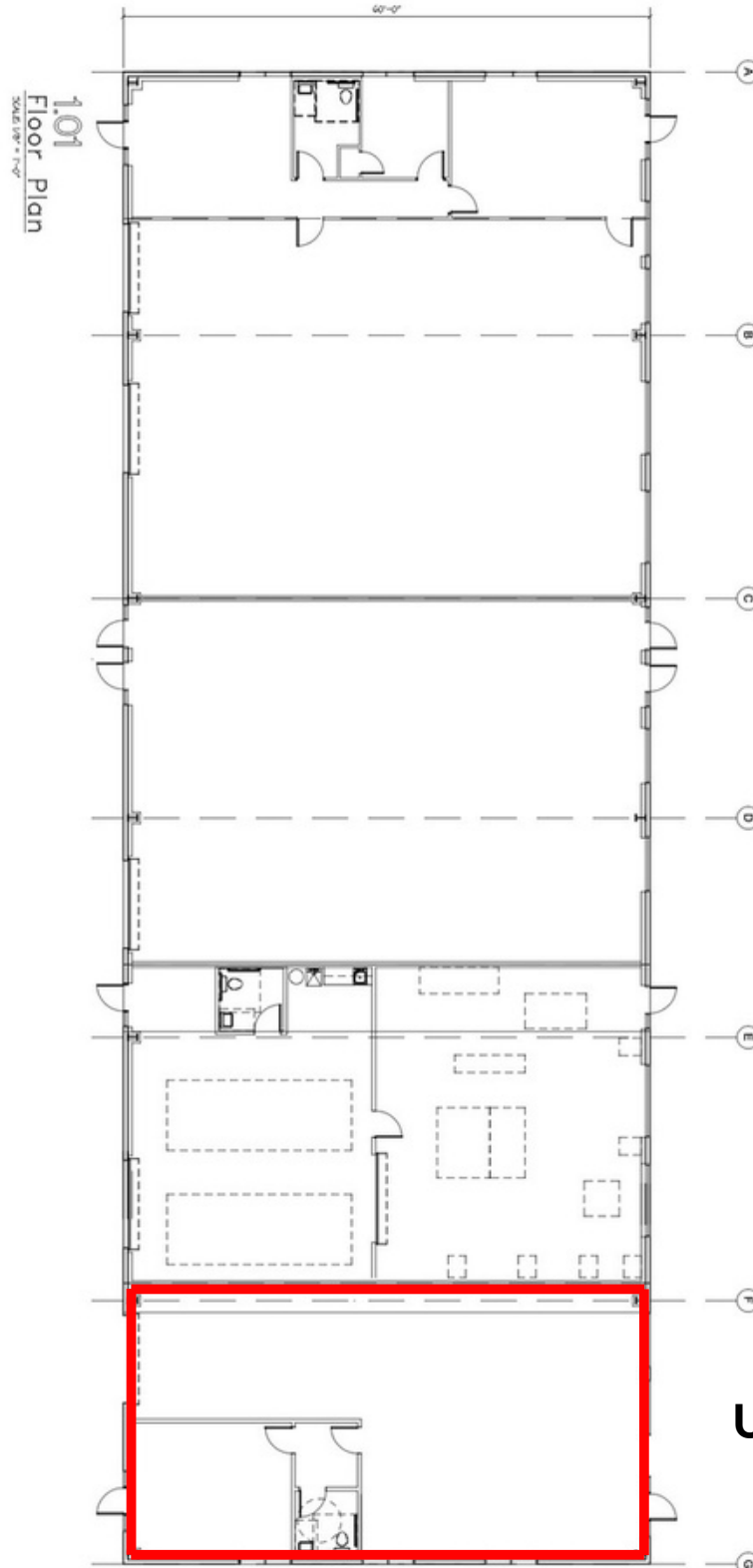
FLOOR PLAN

FEATURES

- Private Business
- Overhead Door
- Natural Light
- Front & Rear Service Door Access

PERMITTED USES

- Personal Service Business
- Research
- Art/Music/Dance School
- Flex
- Health Fitness
- Light Manufacturing
- Office



Unit 5: 1,920 SF