



Marquee Station Out Parcel Sites

High Profile Location on Highway 401, Fuquay Varina, NC
(3) High Profile Retail /Commercial Pad Ready Sites Available

HRI HARTWELL REALTY
INCORPORATED

www.HartwellRealty.net ■ (919) 772-0170

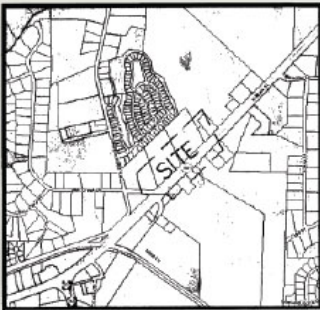


Marquee Station Out Parcel Sites

High Profile Location on Highway 401, Fuquay Varina, NC
 (3) High Profile Retail /Commercial Pad Ready Sites Available



www.HartwellRealty.net ■ (919) 772-0170



PROFESSIONAL SEAL
L-4276
WALTER R. CALDWELL
 Surveyor

MAJOR SUBDIVISION:
 I hereby certify that the streets, utilities and other improvements herein are a true and correct survey to the accuracy required by the Fuquay-Varina Planning Board and that the measurements of the subdivision are in accordance with the requirements of the Town of Fuquay-Varina to ensure completion of all required improvements to the satisfaction of the Town of Fuquay-Varina.

MAJOR SUBDIVISION:
 I have by this plat shown and described herein a true and correct survey to the accuracy required by the Fuquay-Varina Planning Board and that the measurements of the subdivision are in accordance with the requirements of the Town of Fuquay-Varina to ensure completion of all required improvements to the satisfaction of the Town of Fuquay-Varina.

MAJOR SUBDIVISION:
 I have by this plat shown and described herein a true and correct survey to the accuracy required by the Fuquay-Varina Planning Board and that the measurements of the subdivision are in accordance with the requirements of the Town of Fuquay-Varina to ensure completion of all required improvements to the satisfaction of the Town of Fuquay-Varina.

REVIEW OFFICER:
 I, Michael Sorenson, review Officer of the Town of Fuquay-Varina, Wake County, NC, certify that this map or plat is in accordance with the provisions of the Planning Board and that it has been approved for recording in the office of the Register of Deeds.

Certificate of Ownership
 I (we) hereby certify that I (we and) the owner(s) of the property shown and described herein and that I (we) hereby certify that the information on this plat was prepared in accordance with G.S. 47-30 as amended. Where my original signature, license number and seal are required, they are provided here.

Date: 1/14/2014
 BH Marquee Station, LLC
 BH Marquee Station A2, LLC

LINE TABLE

| LINE # | LENGTH | DIRECTION |
|--------|--------|-------------|
| E112 | 32.49' | S54°50'58"W |
| E114 | 32.21' | S29°20'00"W |

CLIQUE TABLE

| CURVE | LENGTH | RADIUS | CHORD BEARING | CHORD |
|-------|--------|---------|---------------|--------|
| C6 | 51.68' | 10.00' | S68°29'19"W | 48.79' |
| C7 | 1.24' | 64.90' | N89°02'30"W | 1.24' |
| C8 | 32.16' | 46.00' | N89°03'32"W | 31.30' |
| C9 | 32.64' | 46.00' | N05°33'43"W | 31.21' |
| C14 | 16.81' | 66.50' | N00°30'00"E | 16.80' |
| C15 | 73.84' | 114.50' | N27°10'54"E | 73.80' |

LINE TABLE

| LINE # | LENGTH | DIRECTION |
|--------|--------|-------------|
| E112 | 32.49' | S54°50'58"W |
| E114 | 32.21' | S29°20'00"W |

CLIQUE TABLE

| CURVE | LENGTH | RADIUS | CHORD BEARING | CHORD |
|-------|--------|---------|---------------|--------|
| C6 | 51.68' | 10.00' | S68°29'19"W | 48.79' |
| C7 | 1.24' | 64.90' | N89°02'30"W | 1.24' |
| C8 | 32.16' | 46.00' | N89°03'32"W | 31.30' |
| C9 | 32.64' | 46.00' | N05°33'43"W | 31.21' |
| C14 | 16.81' | 66.50' | N00°30'00"E | 16.80' |
| C15 | 73.84' | 114.50' | N27°10'54"E | 73.80' |

EXISTING PUBLIC SANITARY SEWER ESMT
EXISTING PRIVATE DRAINAGE ESMT

WAKE COUNTY, NC 42
 LAURA M RIDDBICK
 REGISTER OF DEEDS
 PRESENTED & RECORDED ON
 03/14/2014 AT 09:46:07

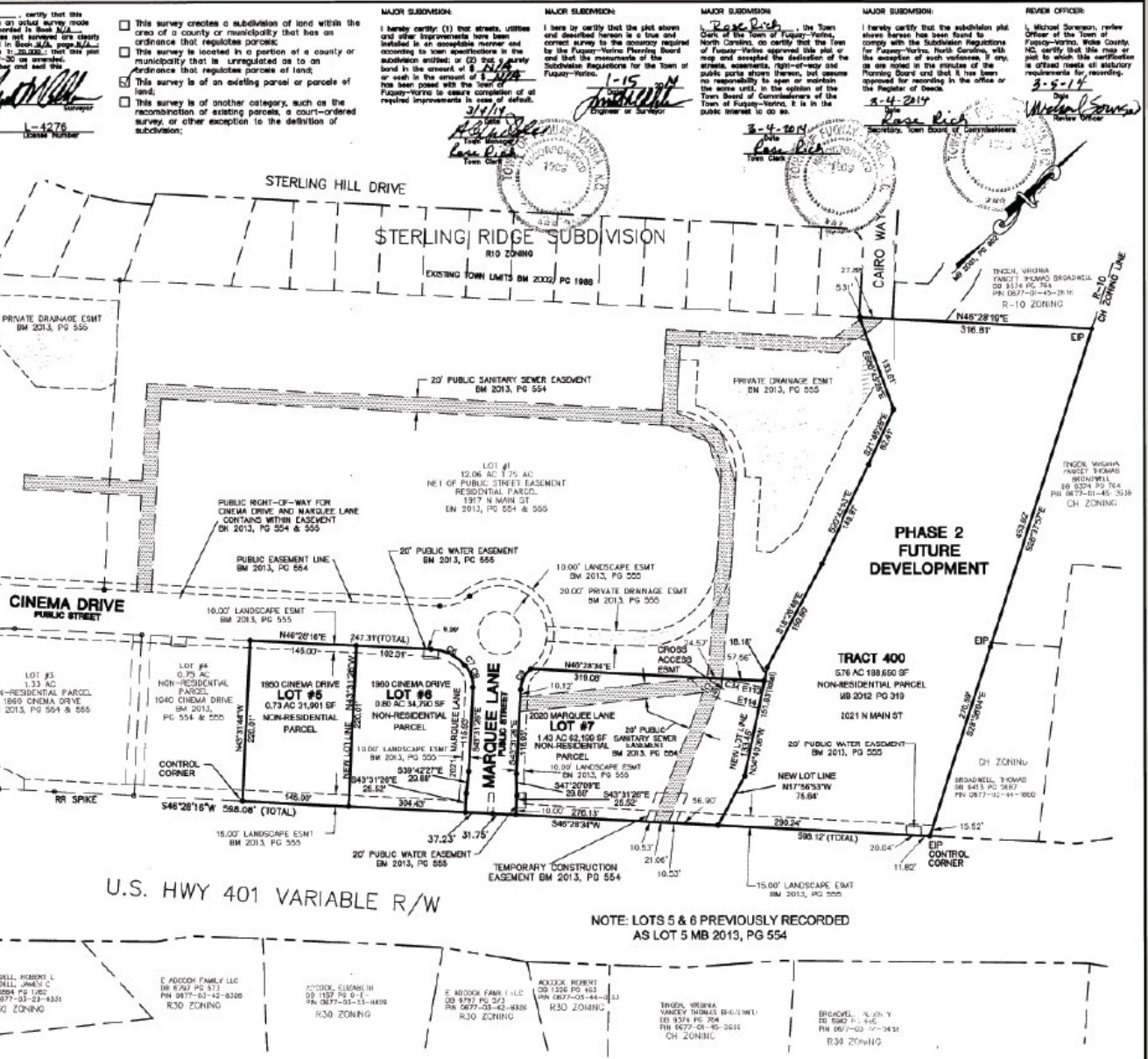


FILED FOR REGISTRATION

| DATE | BY | TIME |
|-----------|-------------------|----------|
| 1/14/2014 | LAURA M. RIDDBICK | 09:46:07 |

REVISION

| DATE | REVISION | BY |
|------|----------|----|
| | | |



U.S. HWY 401 VARIABLE R/W

NOTE: LOTS 5 & 6 PREVIOUSLY RECORDED AS LOT 5 MB 2013, PG 554

RECORDED IN BOOK OF MAPS 2014, PAGE 350, WAKE COUNTY REGISTRY

PIN 0677-34-5220
 PIN 0677-34-8778

JOHN A. EDWARDS & COMPANY
 Consulting Engineers
 NC License F-0289
 333 Wade Ave., Raleigh, NC 27605
 Phone (919) 828-4428
 FAX (919) 828-4711
 E-mail info@jaeco.com

MARQUEE STATION PHASE 1
 LOTS 5, 6, 7, & TRACT 400
 OWNERS: BH MARQUEE STATION, LLC & BH MARQUEE STATION A2, LLC

MAJOR SUBDIVISION PLAT

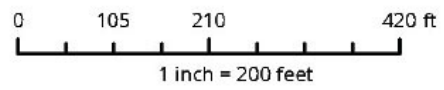
SCALE: 1" = 100'
 DATE: 1/14/2014
 FILED BY: JAE/JR
 CHECKED BY: JAE/JR

WAKE COUNTY
 NORTH CAROLINA

SHEET 1 OF 1



Outparcels 5, 6 & 8 Marquee Station Fuquay, NC



Disclaimer
 iMaps makes every effort to produce and publish the most current and accurate information possible. However, the maps are produced for information purposes, and are **NOT** surveys. No warranties, expressed or implied, are provided for the data therein, its use, or its interpretation.

Marquee Station Out Parcel Sites

High Profile Location on Highway 401, Fuquay Varina, NC
 (3) High Profile Retail /Commercial Pad Ready Sites Available



www.HartwellRealty.net ■ (919) 772-0170