



Aqueduct Conference Center • Chapel Hill



Main Lodge



Main Lodge Foyer



Main Lodge Meeting Room

*A***queduct** is the perfect location for meetings, retreats or gatherings of any kind. Experience a place where life, ideas, creativity and community surround you to impact the world. Aqueduct is the best-kept secret in the Triangle for meetings, weddings, conferences and overnight retreats. Tucked away in the rolling farmlands of old tobacco country, four miles from the heart of historic downtown Chapel Hill, this North Carolina treasure offers space to unplug from the hectic pace of modern day life. Aqueduct offers a casual scene conducive to relaxed conversation, contemplation and community, as well as providing a productive work environment.

An Aqueduct meeting or retreat enables one to step into a stimulating setting that enhances creativity, vision and teamwork. The strategic location feels like you are miles away in another world despite being so close to home in the Research Triangle area. The conference center is thirty minutes from the Raleigh-Durham International Airport.

The expansive, 21.83± acre campus consists of two parcels surrounded by long-range views reminiscent of the western mountain region of North Carolina.

The Main Lodge

The main lodge is a 4,600± square foot glass and wood structure that contains a large all-purpose flex-space. This room features a picturesque view through wall-to-wall windows, stone fireplace and music area complete with piano. The Main Lodge layout includes four offices, two bedrooms and four bathrooms, kitchen, food preparation area and wash room. The Lodge offers meal and beverage service that can be enjoyed inside the cozy comfort of the dining area or on the spacious and covered deck with rocking chairs. The open design allows for a comfortable, informal area with sofas and chairs for less formal gatherings or a more corporate style for team development and training. Breakout space is also available.



Main Lodge Dining Room



Twin Cottage #2



Twin Cottage #2

MEETINGS, SESSIONS & OVERNIGHT RETREATS

There's something special captured in overnight retreats that cannot simply be experienced during a one-day meeting. Spending that extra time at Aqueduct allows your team space for collaboration, socialization and small group discussions.

The Twin Cottages

The Twin Cottages feature 3,700± square feet each and differ only in their furnishings and meeting design purposes. Additionally, there is an on-site laundry and storage space in the lower level of Cottage #2. The meeting space is ample and comfortable with room for a projection screen and TV monitors for presentations. Both cottages contain eight bedrooms complete with full baths. There is a wood-burning fireplace, a kitchenette hidden from view and a general audience's rest room. The guest rooms are situated with four located on the main level and four located on the second level. Each is furnished with two double beds, credenza, closet and a full bathroom. A private balcony accompanies each bedroom, along with individual heating and cooling units. The flooring is wall-to-wall carpet with tile in the bathrooms.

Each cottage features:

- Large Meeting Room
- High Speed Internet
- Fireplace
- Coffee & Snack Buffet



The White Farmhouse



The White Farmhouse Dining Room



The White Farmhouse Living Room

The White Farmhouse

The original homestead for the Aqueduct property is a quaint white farmhouse encircled by a picket fence. The 2,800± square foot two-story home features a ground floor master suite and two bedrooms/ two bathrooms on the second level. The southern facing façade boasts a classic Carolina covered porch. The entry opens into the living room that flows into the dining room, all with wood flooring. A family room steps down from the dining room, and the kitchen is accessed from either room.

The Brown Cabin

A cozy residence adjacent to the main entrance of the conference center, this 1,700± square foot cabin has one bedroom, bath, kitchen and a upstairs room accessed by a small set of stairs.

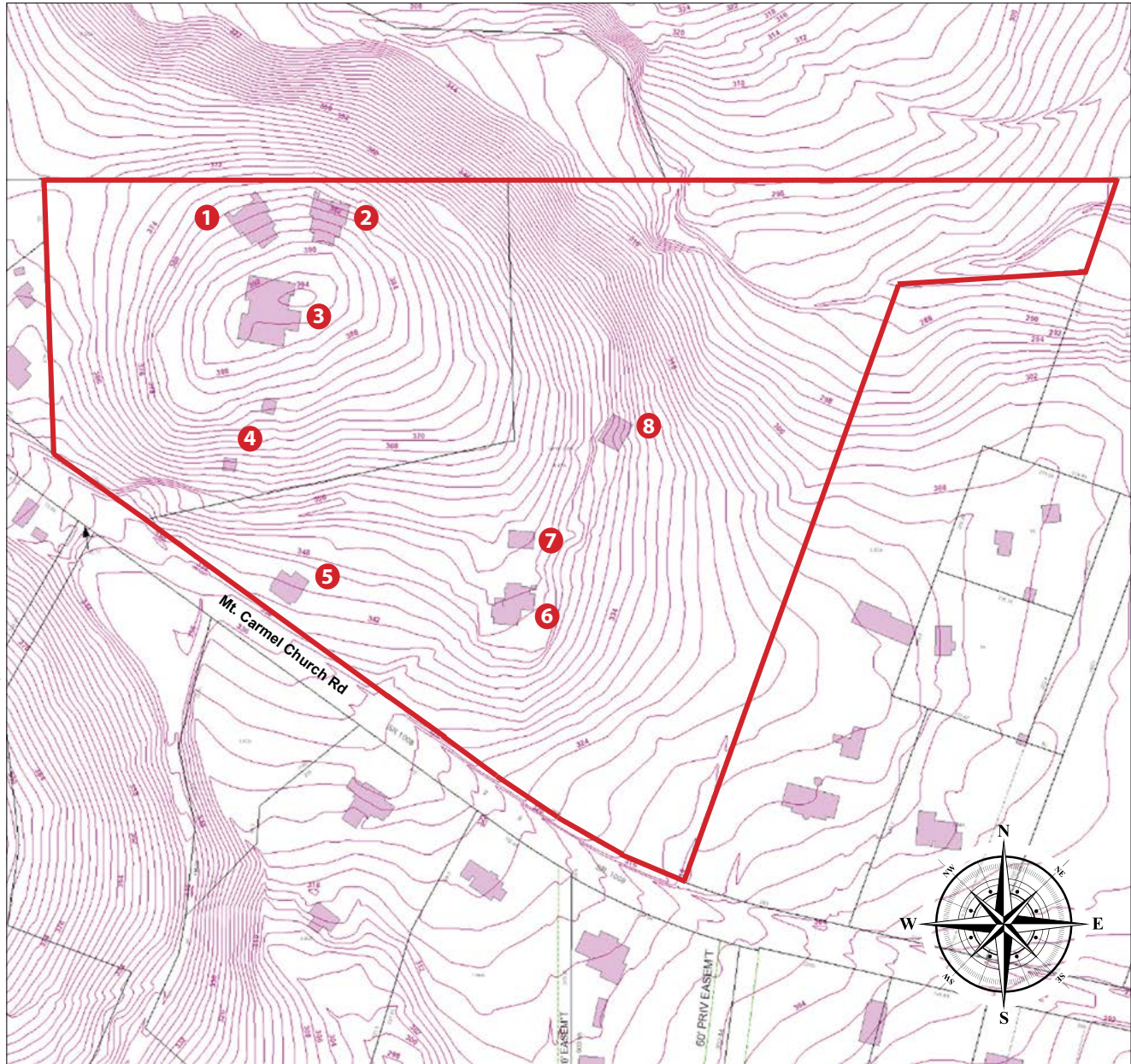
Outbuildings:

Two former Tobacco Barns
 An Equipment Barn
 One Shed
 One Studio

-
- **Price:** \$3,500,000
 - **Acres:** 21.83±
 - **Utilities:** Electric, Septic, Telephone, Cable, Well
 - **# Buildings:** 6
 - **Bldg. Sq. Ft.:** 17,629±
 - **Heating:** Central Heat, Gas, Electric
 - **Tax Value:** \$3,139,500.00
 - **Tax Rate:** 1.1425
 - **Pin #s:** 9787917613 & 9797013402

Structures

- 1. Cottage 1**
 - 3,738 sq. ft.
 - living room with kitchenette/restroom
 - 8 suites w/full baths
 - Patio
- 2. Cottage 2**
 - 3,738 sq. ft.
 - Living room with kitchenette/restroom
 - 8 suites w/full baths
 - Patio
 - 1,122 sq. ft. basement w/ laundry
- 3. Main lodge**
 - 4,609± sq. ft.
 - Foyer, conference area, fireplace, library, dining room, kitchen
 - 1 speaker/bridal suite
 - 1 Overnight manager's suite / office
 - Chapel
 - 4 decks est. 1,051± sq. ft.
- 4. Two Tobacco Barns**
- 5. Brown cabin**
 - 1741± sq. ft.
 - 2 bedrooms/2 baths
- 6. White Farmhouse**
 - 2843± sq. ft.
 - 3 bedrooms/3.5 baths
- 7. Studio/Office**
 - 960± sq. ft.
- 8. Equipment Barn & Shed**





Main Lodge Deck

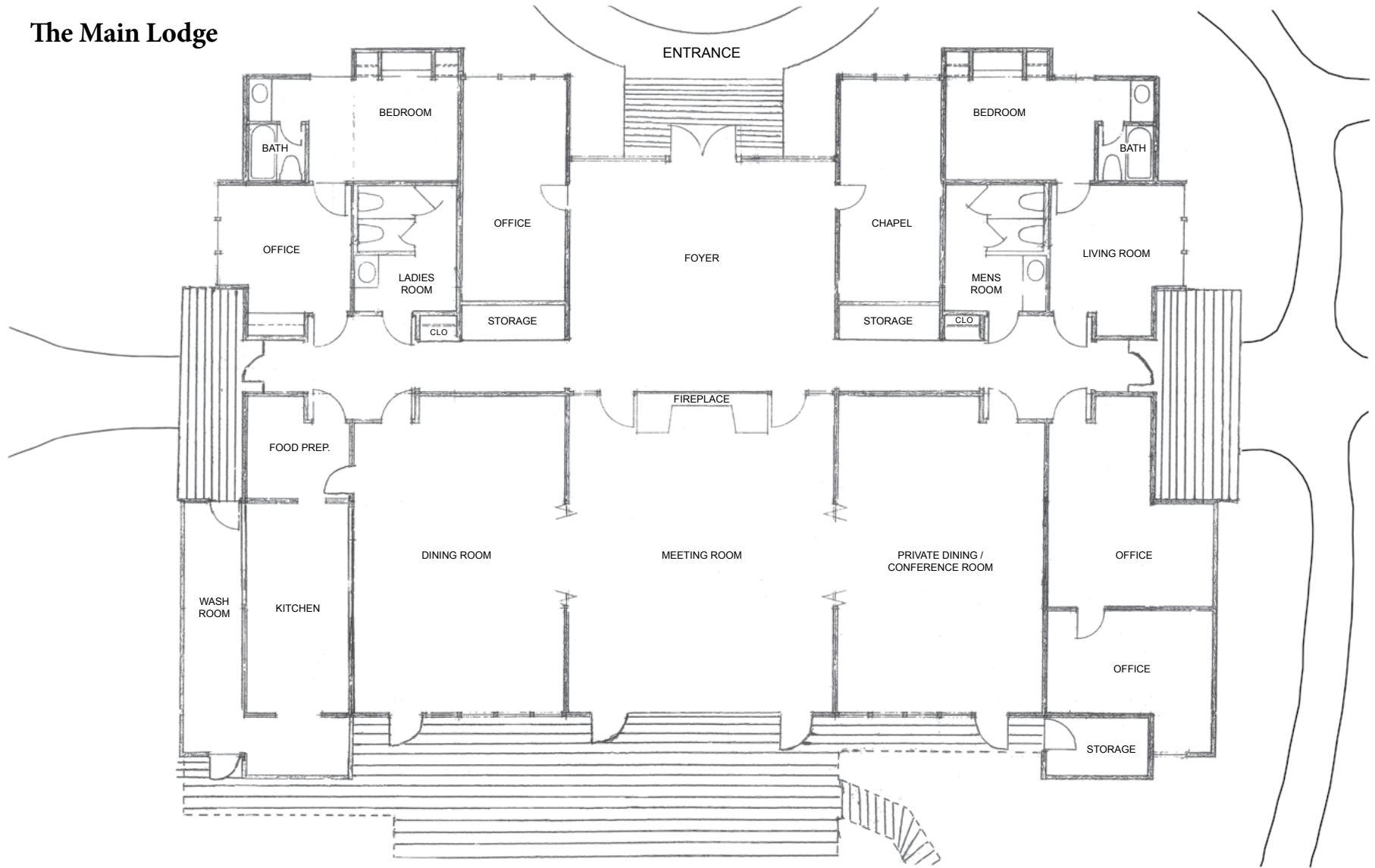


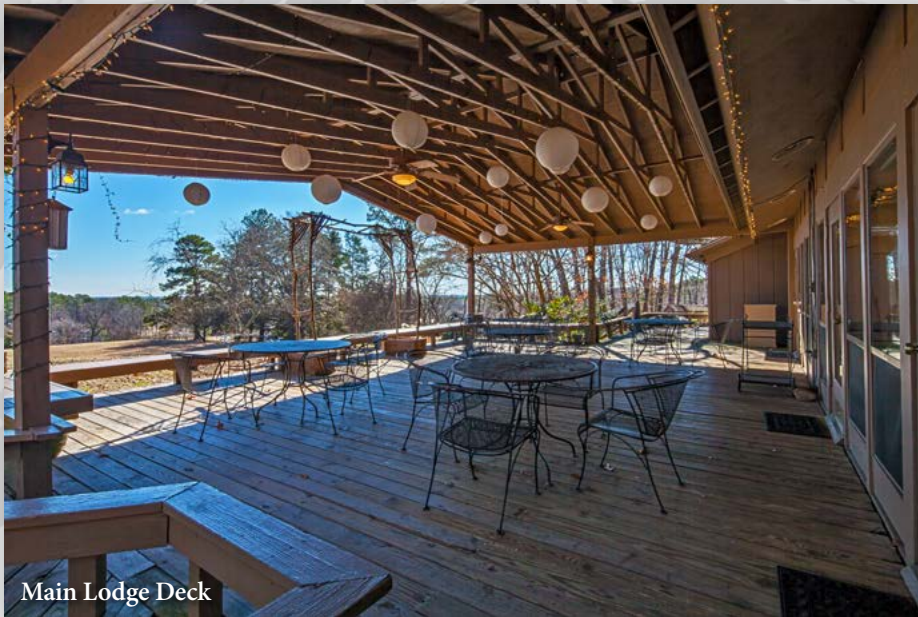
Main Lodge Foyer



Main Lodge Private Dining / Conference Room

The Main Lodge







The Twin Cottages



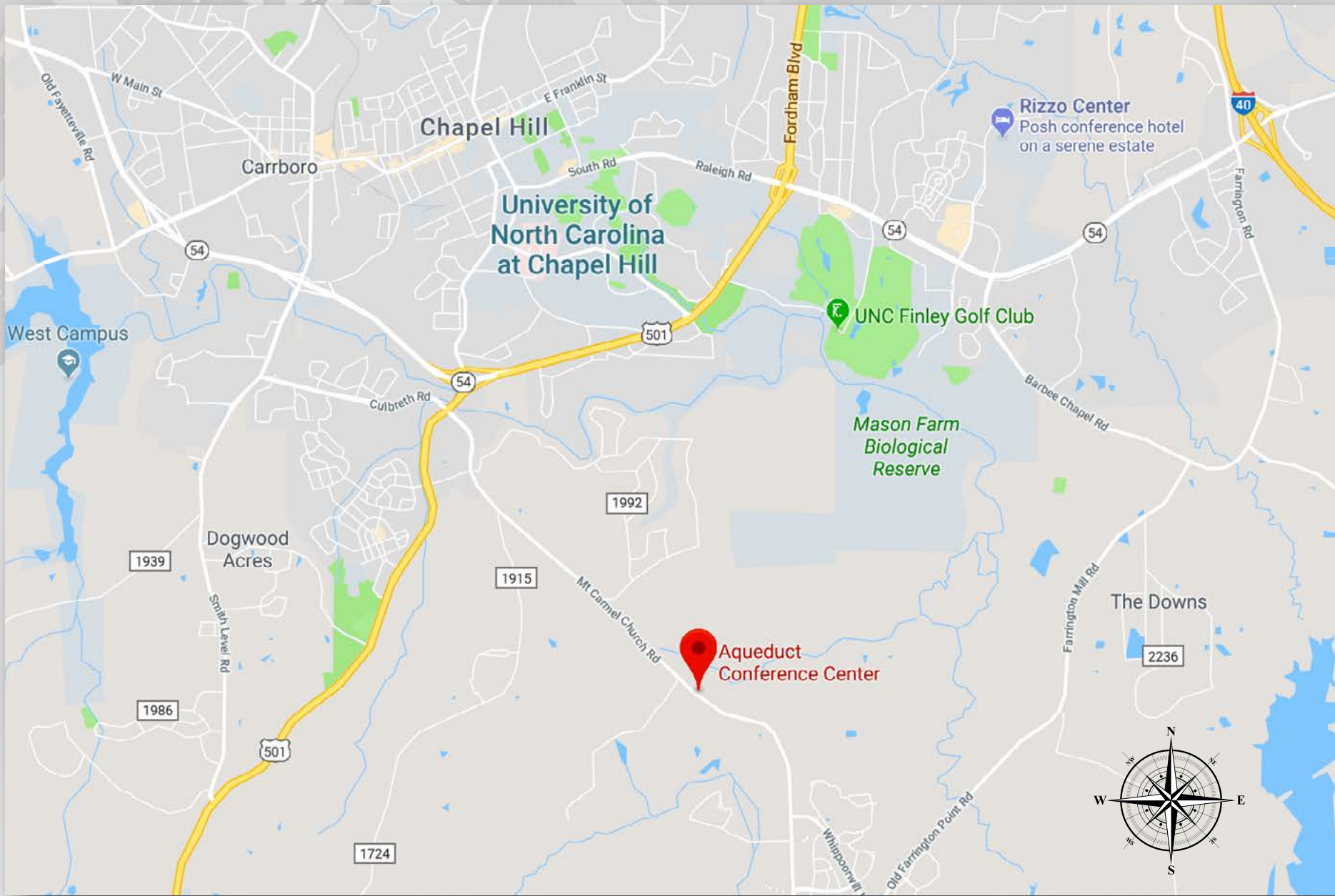
Twin Cottage #2



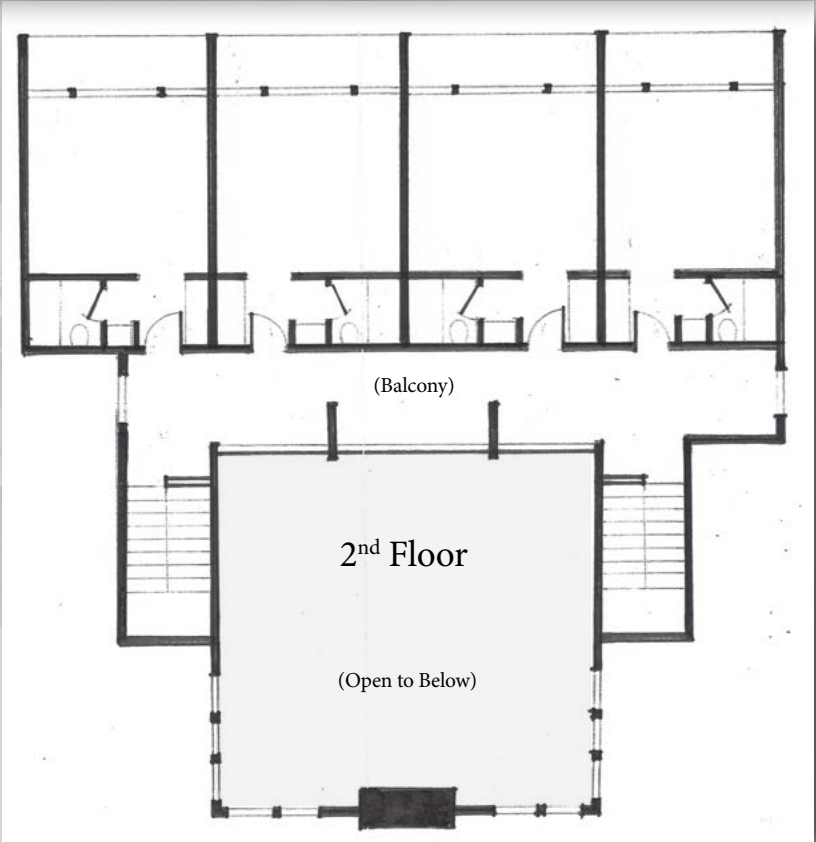
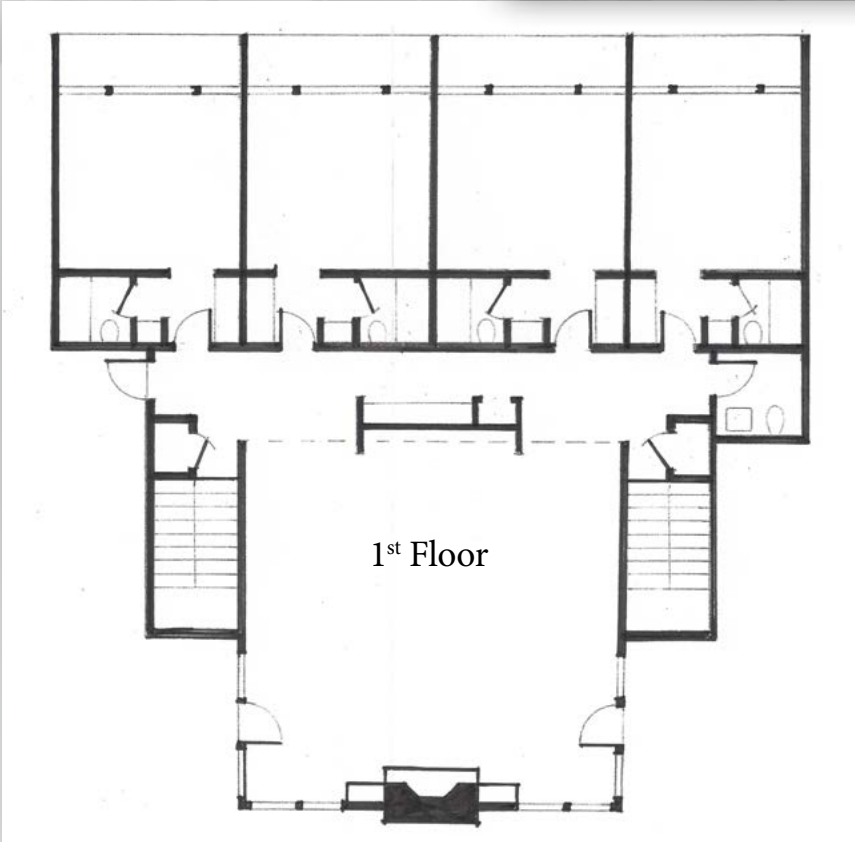
Twin Cottage Guest Room



Twin Cottage #1



The Twin Cottages





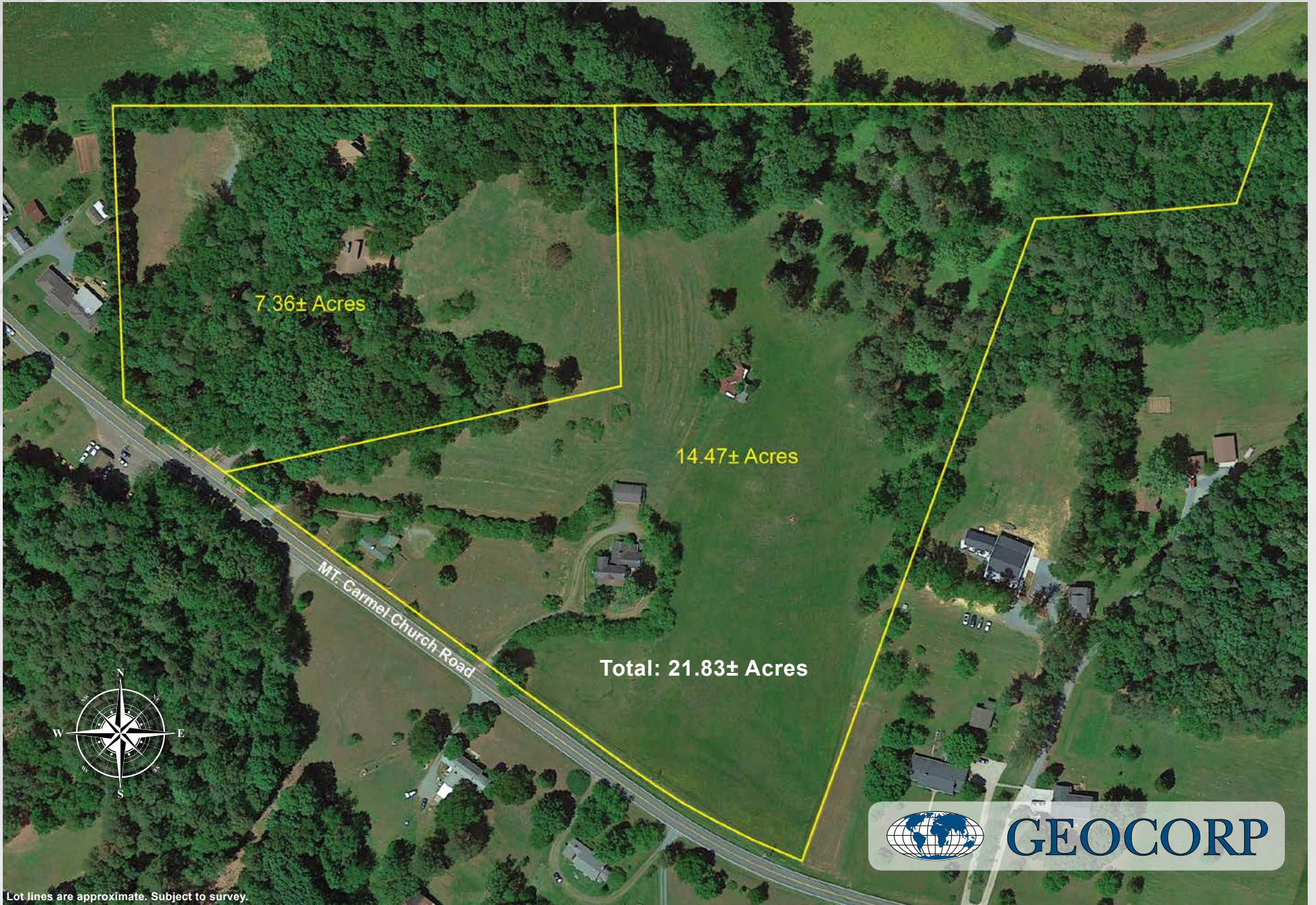
Main Lodge



Tobacco Barn



Twin Cottage #1



Lot lines are approximate. Subject to survey.

Contact: Owen Gwyn 919 906 1551 • owengwyn@me.com • www.geocorp.org