

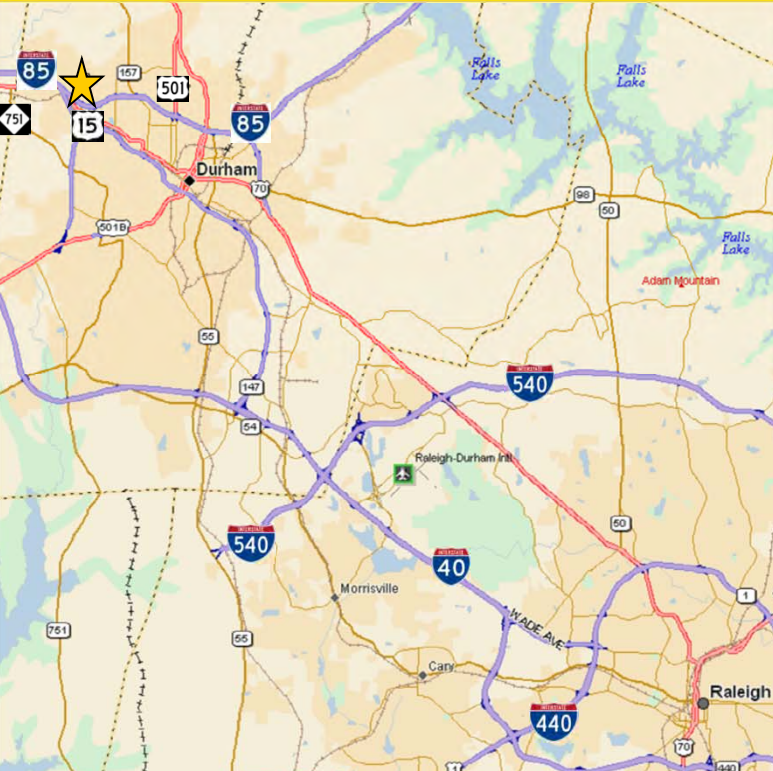
# Land for Sale

## 1417 Cole Mill Road

Durham, NC 27705



**GRUBB & ELLIS**  
Thomas Linderman Graham



### Features:

- Approximately 10.385 acres
- Property consists of two structures
  - 6,383 SF church building that is steel frame structure with stucco over a brick veneer exterior
  - 1,158 SF residential structure that has been converted to a fellowship hall/classrooms building with a storage unit
- Zoning: RS-20 (Residential) by the City of Durham
- All public utilities are available to the subject site
- Great access to I-85
- Property is sold as-is where-is; Seller makes no representation or warranties

#### To learn more, please contact:

1511 Sunday Drive  
Suite 200  
Raleigh, NC 27545  
919.785.3434  
919.785.0802  
[www.tlgcre.com](http://www.tlgcre.com)

**Chester F. Allen, CCIM**  
Real Estate Advisor  
919.719.8191 direct  
[chester.allen@tlgcre.com](mailto:chester.allen@tlgcre.com)

**Carlton Midyette, III**  
Associate Advisor  
919.866.4268 direct  
[Carlton.midyette@tlgcre.com](mailto:Carlton.midyette@tlgcre.com)



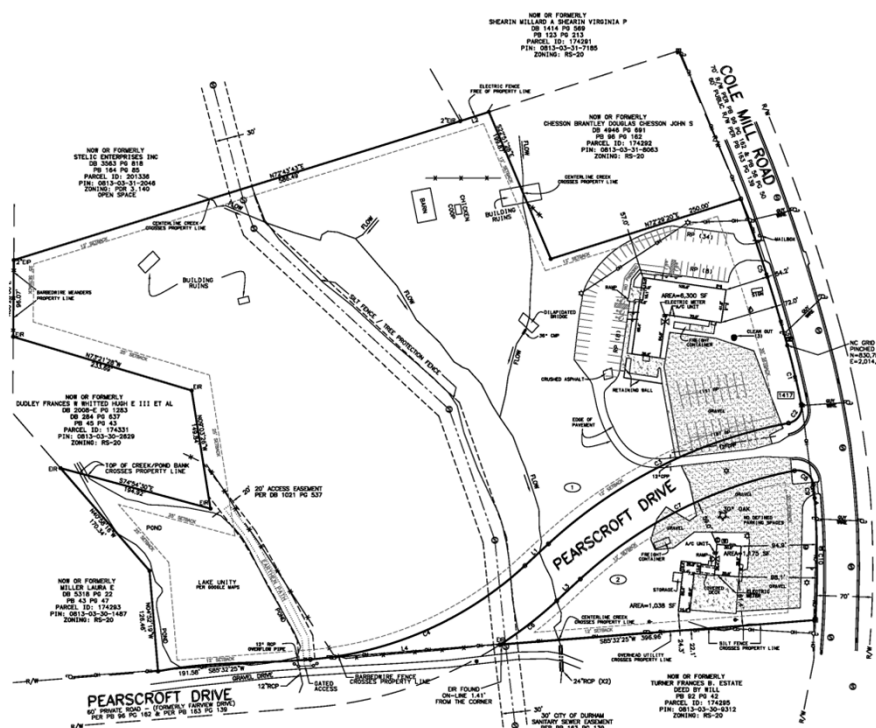
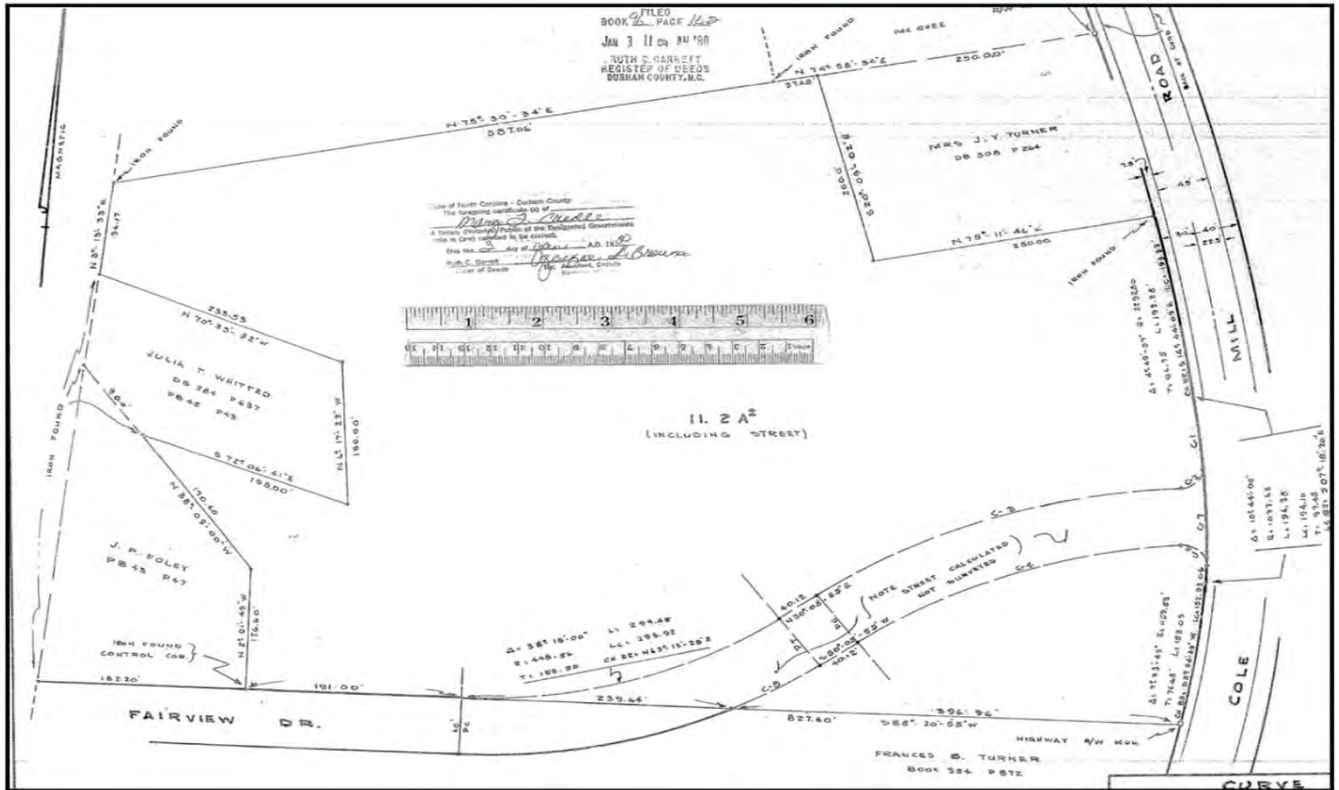
# Land for Sale

# 1417 Cole Mill Road

Durham, NC 27705



**GRUBB & ELLIS**  
Thomas Linderman Graham



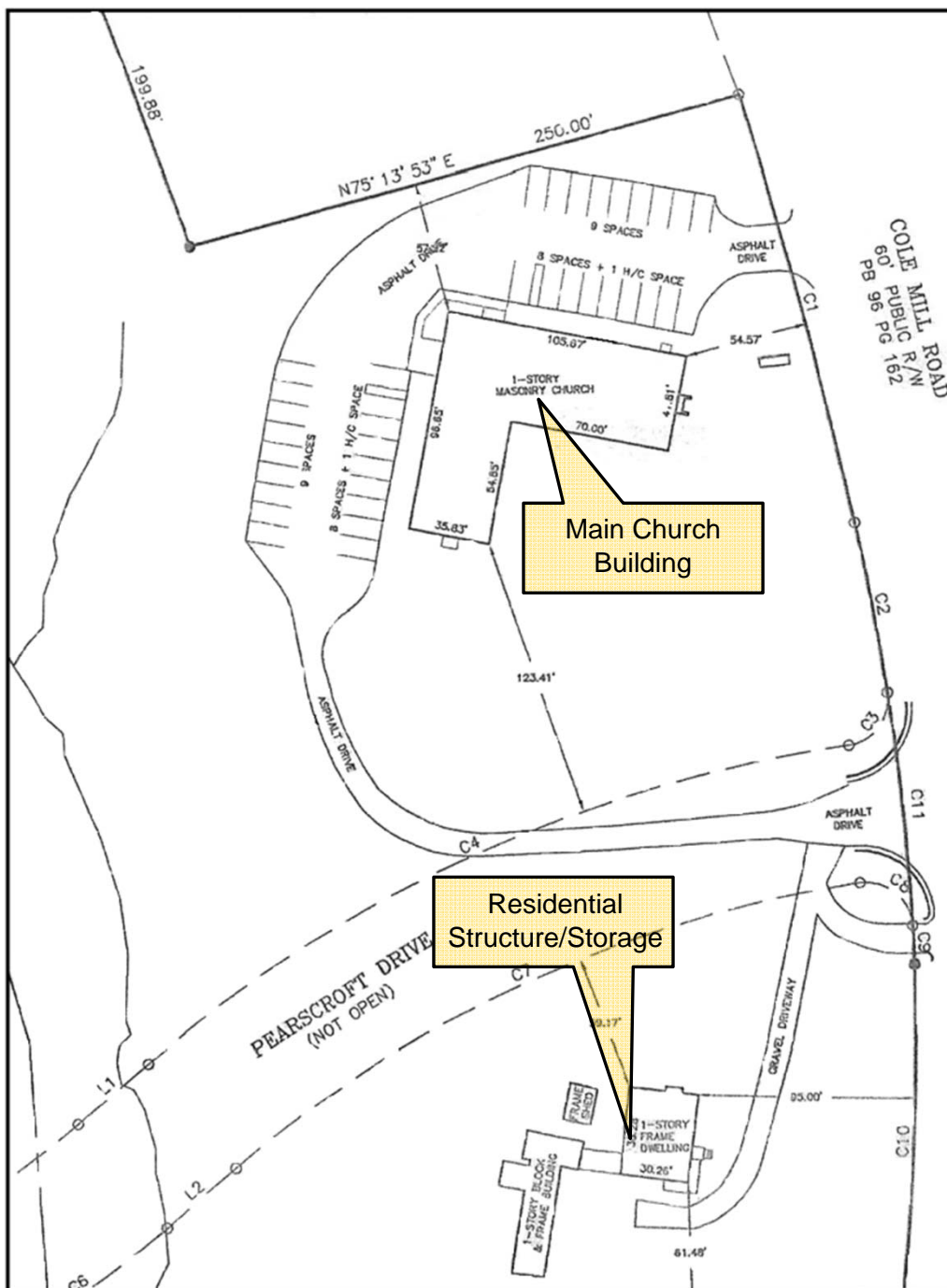
# Land for Sale

## 1417 Cole Mill Road

Durham, NC 27705



**GRUBB & ELLIS**  
Thomas Linderman Graham



### *Independently Owned and Operated*

The information contained herein was obtained from sources believed reliable; however, Grubb & Ellis|Thomas Linderman Graham makes no guarantees, warranties, or representations as to the completeness or accuracy thereof. The presentation of this property is submitted subject to errors, omissions, changes of price or conditions prior to sale or lease, or withdrawal without notice.