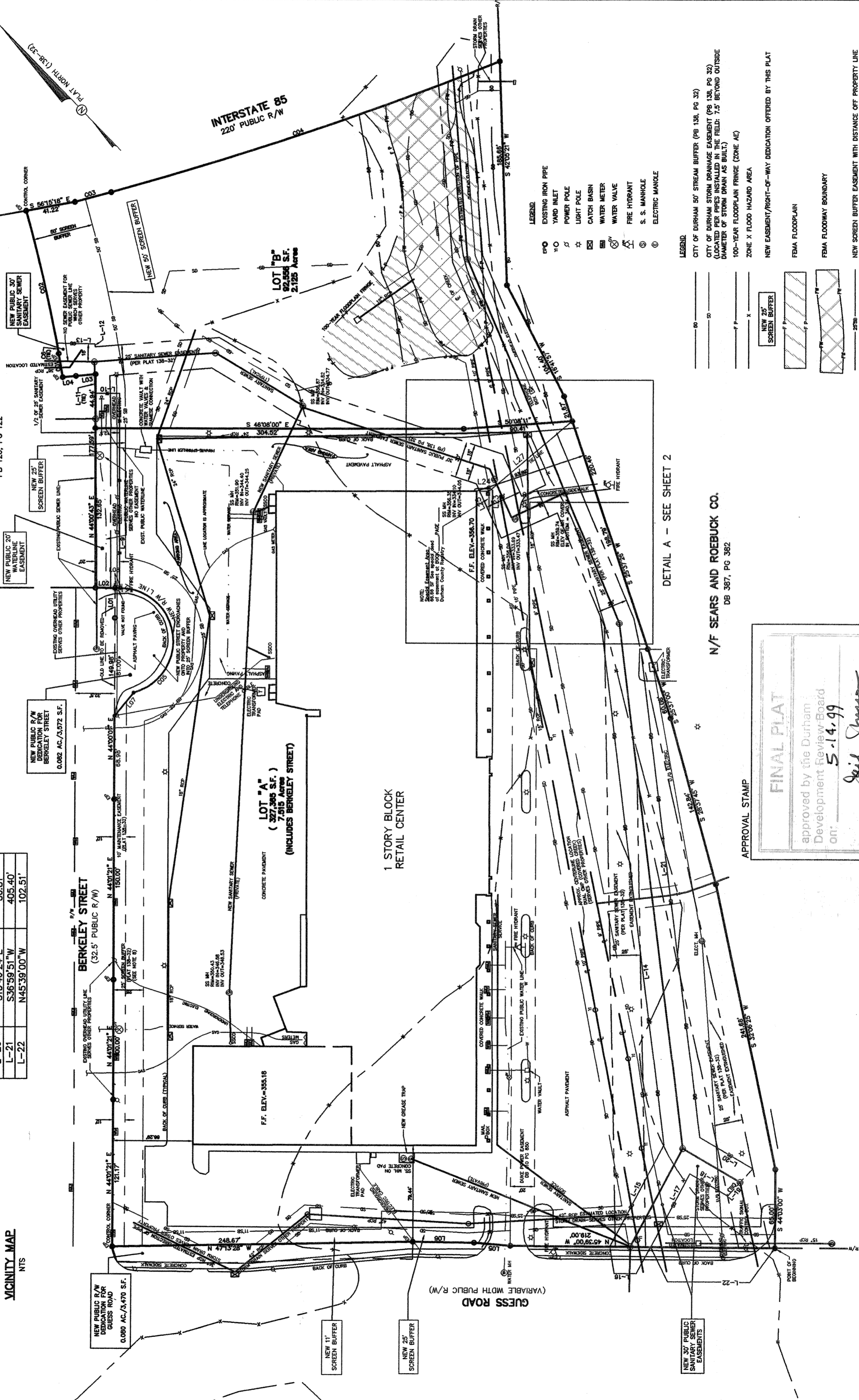
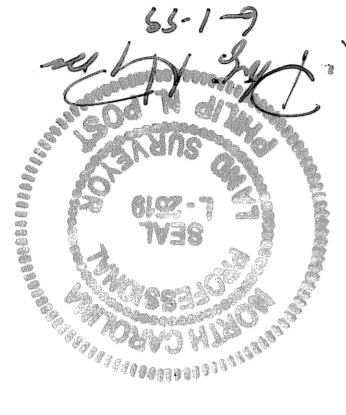


LINE TABLE

LINE	DIRECTION	DISTANCE
L-23	N43°35'19"E	17.25'
L-24	S46°24'41"E	7.73'
L-25	N19°27'37"E	18.90'
L-27	S85°55'11"E	90.11'
L-9	N44°00'43"E	161.65'
L-10	N45°59'17"W	20.00'
L-11	N44°00'43"E	15.94'
L-12	S39°30'31"W	2.43'
L-13	N45°01'26"W	31.41'
L-14	S36°59'20"W	441.27'
L-15	S71°46'17"W	94.99'
L-16	N45°39'00"W	33.80'
L-17	S71°46'17"W	68.47'
L-18	S15°46'24"E	36.20'
L-19	N86°16'13"E	30.68'
L-20	S15°46'24"E	50.81'
L-21	S36°59'51"W	405.40'
L-22	N45°39'00"W	102.51'

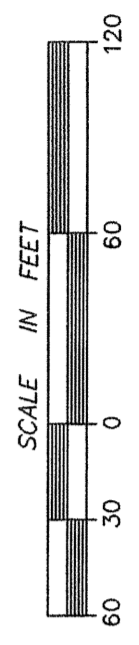
LINE	DIRECTION	DISTANCE
L01	N 44°21'00" E	24.80'
L02	N 45°44'52" W	16.29'
L03	N 51°14'23" W	16.26'
L04	N 51°14'23" W	11.01'
L05	N 41°20'30" W	30.14'
L06	N 45°25'00" W	50.28'
L07	N 83°12'47" E	24.82'
L08	N 45°44'52" W	4.53'

CURVE	RADIUS	LENGTH	CHORD	BEARING
C01	1250.00'	20.06'	20.06'	N 34°22'17" E
C02	1250.00'	121.84'	121.79'	N 31°07'10" E
C03	2989.79'	31.04'	31.04'	S 61°18'36" E
C04	2989.79'	339.33'	339.15'	S 64°51'41" E
C05	44.00'	126.71'	87.25'	N 36°45'08" E
C06	1250.00'	8.80'	8.80'	N 33°42'36" E



- LEGEND**
- EXISTING IRON PIPE
 - YARD INLET
 - POWER POLE
 - LIGHT POLE
 - CATCH BASIN
 - WATER METER
 - WATER VALVE
 - FIRE HYDRANT
 - S. S. MANHOLE
 - ELECTRIC MANHOLE

- LEGEND**
- CITY OF DURHAM 50' STREAM BUFFER (PB 136, PG 32)
 - CITY OF DURHAM STORM DRAINAGE EASEMENT (PB 136, PG 32)
 - (LOCATED PER PIPES INSTALLED IN THE FIELD; 7.5' BEYOND OUTSIDE DIAMETER OF STORM DRAIN AS BUILT)
 - 100-YEAR FLOODPLAIN FRINGE (ZONE AE)
 - ZONE X FLOOD HAZARD AREA
 - NEW EASEMENT/RIGHT-OF-WAY DEDICATION OFFERED BY THIS PLAT
 - FEMA FLOODPLAIN
 - FEMA FLOODWAY BOUNDARY
 - NEW SCREEN BUFFER EASEMENT WITH DISTANCE OFF PROPERTY LINE
 - NEW 20' PUBLIC WATERLINE EASEMENT
 - NEW 30' PUBLIC SANITARY SEWER EASEMENT



APPROVAL STAMP

FINAL PLAT

approved by the Durham
Development Review Board
on: **5.14.99**

Jail Shuman
Clerk, Development Review Board

approval void if not recorded within
90 days or by: **8.14.99**

DETAIL A - SEE SHEET 2

PHILIP POST & ASSOCIATES
ENGINEERS PLANNERS SURVEYORS
401 Providence Road
Chapel Hill, NC 27514
493-2600 • 850-9662
(919)29-1173
822 North Elm Street
Greensboro, NC 27401
(919)273-7711

SHOPS AT NORTHGATE
FINAL PLAT
LOT "A" AND "B"
CITY OF DURHAM
DURHAM COUNTY, NC

SCALE 1"=60'
DRAWN BY JRW
CHECKED BY PNP
DATE 4/6/99
PROJECT NO. A751BP01
DRAWING NO. 53908A
This drawing is the property of Philip Post and Associates and is not to be reproduced or copied in whole or in part. It is only to be used for the project and for the site specifically identified herein and is not to be used on any other project or site. It is to be returned upon the written request of Philip Post & Associates, Inc.
COPYRIGHT 1999 Philip Post & Associates, Inc.

REVISIONS

1. AUG. 12, 1998: REVISED PER LEADER'S LETTER
2. AUG. 12, 1998: 7.433 AC IN DESCRIPTION
3. AUG. 26, 1998: SANITARY, WATER, GAS UPDATE
4. OCT. 19, 1998: AS-BUILT '9 & 10' CMP PIPES
5. NOV. 5, 1998: FINAL PLAT
6. FEB. 18, 1999: SPECIAL EASEMENT AREA
7. APRIL 28, 1999: ENGINEERS COMMENTS
8. MAY 15, 1999: CITY OF DURHAM COMMENTS

SHEET 1 OF 2

SURVEYED AND MAPPED FOR:
NORTHGATE ASSOCIATES LIMITED PARTNERSHIP, A N.C. LIMITED PARTNERSHIP
P.O. BOX 2476
DURHAM, NC 27705